

## The wage-local unemployment relationship in a highly regulated labour market: Greece

Livanos, Ilias

Postprint / Postprint

Zeitschriftenartikel / journal article

Zur Verfügung gestellt in Kooperation mit / provided in cooperation with:

[www.peerproject.eu](http://www.peerproject.eu)

### Empfohlene Zitierung / Suggested Citation:

Livanos, I. (2010). The wage-local unemployment relationship in a highly regulated labour market: Greece. *Regional Studies*, 44(4), 389-400. <https://doi.org/10.1080/00343400802251486>

### Nutzungsbedingungen:

Dieser Text wird unter dem "PEER Licence Agreement zur Verfügung" gestellt. Nähere Auskünfte zum PEER-Projekt finden Sie hier: <http://www.peerproject.eu> Gewährt wird ein nicht exklusives, nicht übertragbares, persönliches und beschränktes Recht auf Nutzung dieses Dokuments. Dieses Dokument ist ausschließlich für den persönlichen, nicht-kommerziellen Gebrauch bestimmt. Auf sämtlichen Kopien dieses Dokuments müssen alle Urheberrechtshinweise und sonstigen Hinweise auf gesetzlichen Schutz beibehalten werden. Sie dürfen dieses Dokument nicht in irgendeiner Weise abändern, noch dürfen Sie dieses Dokument für öffentliche oder kommerzielle Zwecke vervielfältigen, öffentlich ausstellen, aufführen, vertreiben oder anderweitig nutzen.

Mit der Verwendung dieses Dokuments erkennen Sie die Nutzungsbedingungen an.

**gesis**  
Leibniz-Institut  
für Sozialwissenschaften

### Terms of use:

This document is made available under the "PEER Licence Agreement". For more information regarding the PEER-project see: <http://www.peerproject.eu> This document is solely intended for your personal, non-commercial use. All of the copies of this documents must retain all copyright information and other information regarding legal protection. You are not allowed to alter this document in any way, to copy it for public or commercial purposes, to exhibit the document in public, to perform, distribute or otherwise use the document in public.

By using this particular document, you accept the above-stated conditions of use.

Mitglied der  
  
Leibniz-Gemeinschaft



**The wage  $\hat{w}$  local unemployment relationship in a highly regulated labour market: Greece**

Journal:	<i>Regional Studies</i>
Manuscript ID:	CRES-2007-0181.R2
Manuscript Type:	Main Section
JEL codes:	E24 - Employment Unemployment Wages < E2 - Consumption, Saving, Production, Employment, and Investment < E - Macroeconomics and Monetary Economics, J45 - Public Sector Labor Markets < J4 - Particular Labor Markets < J - Labor and Demographic Economics, J64 - Unemployment: Models, Duration, Incidence, and Job Search < J6 - Mobility, Unemployment, and Vacancies < J - Labor and Demographic Economics
Keywords:	wage curve, Philips curve, local labour markets, fixed-effects, Greece

SCHOLARONE™  
Manuscripts

1  
2  
3  
4  
5  
6  
7  
8  
9  
10  
11  
12  
13  
14  
15  
16  
17  
18  
19  
20  
21  
22  
23  
24  
25  
26  
27  
28  
29  
30  
31  
32  
33  
34  
35  
36  
37  
38  
39  
40  
41  
42  
43  
44  
45  
46  
47  
48  
49  
50  
51  
52  
53  
54  
55  
56  
57  
58  
59  
60

## The wage – local unemployment relationship in a highly regulated labour market: Greece

Ilias Livanos, Institute for Employment Research, University of Warwick, Coventry  
CV4 7AL

Correspondence author: Ilias Livanos, Institute for Employment Research, University  
of Warwick, Coventry CV4 7AL

First received: July 2007

Accepted: March 2008

Keywords: wage curve, Philips curve, local labour markets, fixed-effects, Greece

JEL Classification: E24; J45; J64

### Abstract

Using data obtained from 80,000 employees, this paper examines the relationship between individual wages and regional unemployment in Greece. The findings highlight the dynamics of the local labour markets in a case such as Greece, where the OECD claims that wage flexibility is limited. This study does not find evidence that wages in Greece are rigid, but finds a wage curve elasticity of close to -0.1, which corresponds to evidence from many countries. Interestingly, graduates are found to be the most responsive group of workers to the behaviour of local labour markets.

Le rapport salaire-chômage local dans un marché du travail extrêmement réglementé: la Grèce.

1  
2  
3  
4  
5 Livanos  
6  
7

8 A partir des données provenant de 80.000 salariés, cet article cherche à examiner le  
9 rapport entre les salaires des individus et le chômage régional en Grèce. Les résultats  
10 soulignent la dynamique des marchés du travail locaux d'un pays, tel la Grèce, où  
11 l'OCDE prétend que la flexibilité des salaires est limitée. Les résultats de cette étude  
12 ne témoignent pas de la rigidité des salaires en Grèce, mais montrent que l'élasticité  
13 de la courbe des salaires se chiffre à près de -0,1, ce qui correspond aux résultats  
14 provenant de beaucoup de pays. Il est à noter que les diplômés constituent le groupe  
15 de travailleurs qui répond le mieux au comportement des marchés du travail locaux.  
16  
17

18  
19  
20 Courbe des salaires / Courbe de Philips / Marchés du travail locaux / effets-fixes / Grèce  
21  
22

23 Classement JEL: E24; J45; J64  
24  
25

26 **Das Verhältnis zwischen Löhnen und lokaler Arbeitslosigkeit in einem**  
27 **hochgradig regulierten Arbeitsmarkt: Griechenland**

28 Ilias Livanos  
29

30 Keywords:

31 Lohnkurve

32 Philips-Kurve

33 Lokale Arbeitsmärkte

34 Fixed-Effects

35 Griechenland

36 JEL Classification: E24; J45; J64  
37

38 Abstract  
39

40 In diesem Beitrag wird anhand der Daten von 80.000 Arbeitnehmern die  
41 Beziehung zwischen den einzelnen Löhnen und der regionalen  
42 Arbeitslosigkeit in Griechenland untersucht. Die Ergebnisse verdeutlichen die  
43 Dynamik von lokalen Arbeitsmärkten in Fällen wie Griechenland, wo die  
44 Löhne laut Angaben der OECD nur begrenzte Flexibilität aufweisen. In dieser  
45 Studie wurden keine Belege dafür gefunden, dass die Löhne in Griechenland  
46 rigide ausfallen; stattdessen wurde eine Elastizität der Lohnkurve in Höhe von  
47 annähernd -0,1 festgestellt, was den Belegen aus zahlreichen Bezirken  
48 entspricht. Interessanterweise sind nach den Ergebnissen dieser Studie  
49 Hochschulabsolventen diejenige Gruppe an Arbeitnehmern, die am stärksten  
50 auf das Verhalten der lokalen Arbeitsmärkte reagiert.  
51  
52

53  
54 La relación entre desempleo local y salario en un mercado laboral altamente  
55 regulado: Grecia

56 Ilias Livanos  
57

58 Abstract  
59

60 Con ayuda de datos obtenidos a partir de 80.000 empleados, en este artículo  
examinó la relación entre los salarios individuales y el desempleo regional en

1  
2  
3  
4  
5  
6  
7  
8  
9  
10  
11  
12  
13  
14  
15  
16  
17  
18  
19  
20  
21  
22  
23  
24  
25  
26  
27  
28  
29  
30  
31  
32  
33  
34  
35  
36  
37  
38  
39  
40  
41  
42  
43  
44  
45  
46  
47  
48  
49  
50  
51  
52  
53  
54  
55  
56  
57  
58  
59  
60

Grecia. Los resultados destacan las dinámicas de los mercados laborales locales en un caso como el de Grecia, donde la OCDE afirma que la flexibilidad de salarios es limitada. En este estudio no se halla evidencias de que los salarios en Grecia sean rígidos sino más bien veo una elasticidad de la curva de salarios de aproximadamente  $-0,1$ , lo que corresponde al ejemplo de muchos países. Es interesante observar que los licenciados son el grupo de trabajadores más receptivos al comportamiento de los mercados locales de trabajo.

Keywords:

Curva salarial

Curva de Philips

Mercados laborales locales

Efectos fijos

Grecia

JEL Classification: E24; J45; J64

## 1. Introduction

*'There is a scope for Greece to ... [enhance] the flexibility of the wage setting system....Wage flexibility is limited in Greece...Greater flexibility ... could bring about lower unemployment'*  
(OECD, 2005, p. 104).

Until 1974, Greece was one of the fastest growing economies in the world and the reported levels of unemployment were low. After the first oil crisis, the rate of economic growth decreased, and simultaneously, unemployment rose very fast. In the beginning of the 1990s, unemployment increased further, to the European average. The situation remains the same today, and Greece has one of the highest rates of unemployment in Europe. For instance, in 2005, the rate of unemployment in Greece was 9.8% , compared to 8.7% of EU25 (EUROPEAN COMMISSION, 2006).

One of the most distinctive characteristics of the Greek economy is the strong persistence of regional differences, since divergence of regions is much stronger than other peripheral areas of Europe, such as Spain and Portugal. Nevertheless, research on the convergence hypothesis provides mixed results. A body of evidence (SIRIOPOULOS and ASTERIOU, 1998; TSIONAS, 2002) suggests lack of income convergence among Greek regions, and the existence of economic dualism between southern and northern regions. On the other hand, a study by MICHELIS et al., 2004, does not reject the idea of regional convergence. Regarding unemployment, its rates vary greatly across regions within the country. The implications of regional variation of unemployment for the Greek economy are significant as Greece has the highest percentage (73%) of the labour force living in regions with an unemployment rate above the national average amongst OECD countries (OECD, 2005). All the above,

1  
2  
3 suggest strong regional differences in the Greek economy. These differences, apart  
4  
5 from problems of immigration and other sociological and historical explanations,  
6  
7 have also been attributed to ineffective planning, which is mainly an outcome of lack  
8  
9 of previous experience in comparison to rich countries (SIRIOPOULOS and  
10  
11 ASTERIOU, 1998).  
12  
13

14  
15  
16  
17 Regarding wage flexibility, it is well-argued that it is quite limited, while it is also  
18  
19 suggested that these low levels are partly held responsible for the high unemployment  
20  
21 rates. For instance, a study by BABETSKII, 2005, found that during the period 2000-  
22  
23 2004 wage flexibility in Greece experienced a decrease, and the wage elasticity to  
24  
25 unemployment changed from being negative for the period 1995-1999 to being  
26  
27 insignificant for 2000-2004. Similarly, a study by MILAS, 1999, using aggregate  
28  
29 time-series data, suggests that there is narrow employment and wage inflexibility in  
30  
31 the Greek labour market. Finally, CLAR et al., 2007, studying real wage flexibility in  
32  
33 a large number of countries, classify wage flexibility in Greece as intermediate.  
34  
35  
36  
37  
38  
39  
40

41 This study adds to the existing wage curve literature in several ways. First, no attempt  
42  
43 has been made before to estimate a wage curve for Greece. Greece is an interesting  
44  
45 case because it is a small economy with one of the highest rates of unemployment in  
46  
47 Europe, high labour costs and strong regulation in the labour market. Second, since  
48  
49 wage flexibility is suggested as being limited, the existence of a wage curve is  
50  
51 debatable. Third, contrary to many of the countries that BLANCHFLOWER and  
52  
53 OSWALD, 1994, examined, unemployment in Greece varies substantially according  
54  
55 to region<sup>i</sup>, and it therefore provides a promising case for studying wage flexibility. For  
56  
57 instance, since unemployment varies considerably across regions, this paper estimates  
58  
59  
60

1  
2  
3 a separate wage curve for two types of region; regions with low unemployment, less  
4 than 10%, and regions with a high level of unemployment, 10% or more. This enables  
5 us to assess which regions are more responsive to an increase in unemployment.  
6  
7  
8 Fourth, we question whether a wage curve exists in the longer run, by examining the  
9 relationship between time-averaged wages and unemployment rates.  
10  
11  
12  
13  
14

## 15 16 17 18 **2. Regional unemployment differentials**

19  
20 The phenomenon of regional differences in unemployment has attracted substantial  
21 attention in the literature. MYRDAL, 1957, suggested that regional disparities tend to  
22 increase as leading regions exploit initial advantage (i.e. economies of scale,  
23 innovation, technology), and become self-sustaining and self-reinforcing, so that the  
24 initial advantage increases over time. Regional disparities were also explained by  
25 MARSTON, 1985, who adopted two different approaches. The first suggests that this  
26 may be the result of an equilibrium situation, in which each region moves towards its  
27 'natural' unemployment rate, as determined by a particular composition of amenities  
28 and endowments. The second approach refers to the heterogeneous distribution of  
29 rates of unemployment across regions, an outcome of a disequilibrium situation that is  
30 rigidities in the labour market act as barrier to achieving an equilibrium path. The  
31 rigidities that are usually seen as accounting for the uneven distribution of  
32 unemployment rates are wage flexibility and the high cost of migrations. Moreover,  
33 ELHORST, 2003, concludes that the main determinants of regional unemployment  
34 rates are a combination of labour supply, labour demand and wage settings factors.  
35  
36  
37  
38  
39  
40  
41  
42  
43  
44  
45  
46  
47  
48  
49  
50  
51  
52  
53  
54

55  
56  
57  
58 Nevertheless, over the last two decades the main focus of study has been on wage  
59 flexibility. PHILLIPS, 1958, explored the hypothesis that pay is inversely related to  
60



1  
2  
3 the unemployment rate. This relationship, known as the Philips Curve, has become  
4 part of standard macroeconomics. HARRIS and TODARO, 1970, argued that in order  
5 for a typical worker to accept a job in an industry that experiences high  
6 unemployment, he/she needs to be paid well, otherwise the worker will find it too  
7 risky to stay in this area. BLANCHFLOWER and OSWALD, 1990, found that an  
8 inverse relationship exists between the real wage, paid to the employees, and the rate  
9 of unemployment in a local labour market. They suggested that the unemployment  
10 elasticity of pay is -0.1. BLANCHFLOWER and OSWALD, *ibid*, named this  
11 relationship 'the Wage Curve'.  
12  
13  
14  
15  
16  
17  
18  
19  
20  
21  
22  
23  
24  
25  
26

### 27 **3. Regional unemployment and the elasticity of pay (wage curve)**

28  
29  
30  
31  
32 "it is clear that the wage curve has prompted a wave of fascinating research on local labour  
33 market" (NIJKAMP and POOT, 2005).  
34  
35  
36  
37

38 Over the last two decades, there has been extensive research on the responsiveness of  
39 individuals' wages to the changing conditions within the local labour market.  
40 BLANCHFLOWER and OSWALD, 1990, examined micro-level US and British data  
41 and found that an inverse relationship exists between real wages paid to employees  
42 and the rate of unemployment in a local labour market. They suggested that the  
43 unemployment elasticity of pay is -0.1. This implies that a 10% rise in the regional  
44 unemployment rate will lead to approximately a 1% wage decline, *ceteris paribus*.  
45  
46  
47  
48  
49  
50  
51  
52  
53  
54  
55  
56  
57  
58  
59  
60  
BLANCHFLOWER and OSWALD, 1994, replicated this research in 12 countries<sup>ii</sup>,  
and concluded that this relationship is an empirical law of economics.

1  
2  
3 BLANCHFLOWER and OSWALD, 1994, suggest three possible explanations for the  
4 wage curve. These could be supported by; a labour contract model, an efficiency  
5 wage model of a bargaining model. The labour contract model (AZARIADIS, 1975,  
6 and BAILY, 1974) assumes that regions differ in amenity values, but have the same  
7 'outside option' (i.e. reservation wages or the unemployment benefits). Firms and  
8 workers agree on a state-contingent wage level and a state-contingent employment  
9 level. Regions with attractive amenities will be close together at outcomes  
10 characterized by low long-run wages with high long-run unemployment. A union  
11 bargaining model, derived from a contribution by DE MENIL, 1971, generates a  
12 wage equation of the form  $w = \alpha + s \pi/v$ , where  $w$  is the negotiated wage available to  
13 union workers,  $\alpha$  is the expected 'alternative' wage in the non-union sector,  $\pi/v$ , is the  
14 level of profits per worker and  $s$  is a relative bargaining power parameter. An  
15 increasing rate of unemployment will cause  $\alpha$  to decrease, resulting in the existence of  
16 a wage curve. The third wage curve theory builds on the efficiency wage model of  
17 SHAPIRO and STIGLITZ, 1984. Employers, who can monitor workers' productivity,  
18 will offer a compensation that will discourage workers from evading work. Because  
19 the expected penalty for the evasion of work is greater in cases where it is harder to  
20 find a job, firms can offer a lower wage premium during times of high unemployment.  
21 In contrast to the efficiency wage model, CAMPBELL and ORSZAG, 1998, explain  
22 the wage curve by suggesting that companies in regions with low unemployment  
23 economize on costs associated with hiring new employees by paying higher wages so  
24 as to discourage existing workers from quitting.

25  
26  
27  
28  
29  
30  
31  
32  
33  
34  
35  
36  
37  
38  
39  
40  
41  
42  
43  
44  
45  
46  
47  
48  
49  
50  
51  
52  
53  
54  
55  
56  
57  
58 The robustness of this relationship, subsequent to the publication of  
59 BLANCHFLOWER and OSWALD, 1994, has been confirmed by studies in many  
60

1  
2  
3 other countries<sup>iii</sup>. An important finding in the wage curve literature is that the  
4  
5 unemployment elasticity of pay varies across diverse groups of individuals. In  
6  
7 particular, CARD, 1995, finds that elasticity is higher for young rather than old  
8  
9 people, for males than for females, for lower educated rather than higher educated, for  
10  
11 private sector employees rather than public and for non-union members rather than  
12  
13 union members.  
14  
15

16  
17  
18 Nevertheless, despite the fact that it is generally acknowledged that the wage curve is  
19  
20 a “robust empirical phenomenon” (NIJKAMP and POOT, 2005), some doubts persist  
21  
22 regarding its subsistence. In particular, there are some cases where a relationship has  
23  
24 not been found to exist. For instance, ALBAEK et al., 1999, did not find a stable  
25  
26 negative relationship between wages and unemployment in the Nordic labour  
27  
28 markets. In addition, LUCIFORA and ORIGO, 1999, did not find a wage curve for  
29  
30 Italy. Also, PARDRIDGE and RICKMAN, 1997, found the existence of an upward  
31  
32 sloping curve. In addition, a number of academics (see CARD, 1995; CARD and  
33  
34 HYSLOP, 1997) argue that the wage curve may be a result of the misspecification of  
35  
36 regression analysis, and actually suggest that the wage curve is a misspecified Phillips  
37  
38 curve. Indeed, studies by CARD and HYSLOP, 1997, and BLANCHARD and KATZ,  
39  
40 1999, have found support for the variant of the Phillips curve, rather than the wage  
41  
42 curve. Moreover, some evidence (HALL, 1979, 1972, REZA, 1978, PAPPS, 2001,  
43  
44 BEL et al. 2002, MORRISON et al., 2006) suggests that long-term wages and the  
45  
46 long-term unemployment rates are positively related. For instance, a recent paper by  
47  
48 MORRISSON et al. provided a theoretical framework suggesting that while the wage  
49  
50 curve might exist in the short-term a positive relationship between wages and  
51  
52  
53  
54  
55  
56  
57  
58  
59  
60

1  
2  
3 unemployment will be seen in the longer-term, along the lines of HARRIS and  
4  
5  
6 TODARO, 1970.  
7  
8  
9

#### 10 **4. Regional unemployment in Greece**

11  
12 The large regional unemployment disparities are one of the most striking features of  
13  
14 the Greek labour market. In fact, a study by PUGA, 2002, classifies Greece as falling  
15  
16 within the group of countries with the largest regional disparities in Europe.  
17  
18

19  
20 Table 1 presents the average regional unemployment rate for the period 1998-2006.  
21  
22 As can be seen, differences in regional unemployment are quite large. To illustrate  
23  
24 this point, Western Macedonia has an unemployment rate (15.2%) of around two and  
25  
26 half times higher than Crete (6.4%). In general, unemployment is concentrated mainly  
27  
28 in northern and central regions. On the other hand, southern regions of Greece seem to  
29  
30 be less affected by unemployment. The high rates of unemployment in Northern and  
31  
32 Central Greece can be attributed to the contraction of the manufacturing and  
33  
34 agriculture sectors. Regarding manufacturing, the pressures of international trade and  
35  
36 the attractiveness of the low paid workforce in countries of Eastern Europe have led  
37  
38 many industrial units, operating mainly in regions of Northern Greece and Sterea  
39  
40 Ellada, either closing down or moving elsewhere. This, together with the shrinkage of  
41  
42 the agricultural sector, which has traditionally been a large part of the Greek  
43  
44 economy, has resulted in a rise in the rate of unemployment in these particular regions  
45  
46 over the last twenty years. Regarding Southern Greece and Ionian Islands, the levels  
47  
48 of unemployment have remained at low levels, as these regions rely heavily on  
49  
50 tourism, which remains at high levels, while they have experienced high levels of  
51  
52 economic growth over the last decades. The large differences in unemployment  
53  
54  
55  
56  
57  
58  
59  
60

1  
2  
3 between northern and southern regions support the notion of economic dualism, as  
4 discussed in the introduction.  
5  
6

7  
8 [Table 1 HERE]  
9

10 Figures 1, 2, 3, 4, and 5 present some of the structural characteristics of the 13  
11 regions. Figure 1 illustrates the distribution of population according to status of  
12 economic activity. It is interesting to observe that the regions that suffer from high  
13 levels of unemployment, such as Western Macedonia, Ipeiros, and Sterea Ellada, have  
14 the highest level of economic inactivity. This may be attributed to the nature of these  
15 economies and the fact that they are heavily based on agriculture and manufacturing  
16 (see Figure 2), which are declining sectors. On the contrary, regions where the level  
17 of unemployment is lower, such as Crete and Ionian Islands, have a very strong  
18 service sector. Regarding level of education (Figure 3) we observe that high levels of  
19 tertiary education are generally related to lower levels of unemployment. On the other  
20 hand, regions with high levels of unemployment (e.g. Western Macedonia and Sterea  
21 Ellada), have low levels of tertiary education. Figure 4 shows how the regional  
22 workforce is distributed across self-employed, family workers, and wage earners. A  
23 key observation of Figure 4 is that regions (excluding the urban regions, i.e. Attica  
24 and Central Macedonia) where the sum of self-employed and family workers is low  
25 (i.e. Western Macedonia, Ipeiros, and Sterea Ellada), the rates of unemployment are  
26 particularly high. In other words, regions in which paid employment (wage earners) is  
27 higher seem to suffer from the highest levels of unemployment. This is indicative of  
28 the structures of trends within the Greek economy, where the role of self-employment  
29 and small family businesses is central, and is often seen as safety net against  
30 unemployment. Figure 5 illustrates the shares of public and private employment  
31 across regions. The share of public sector employment generally seems to be around  
32  
33  
34  
35  
36  
37  
38  
39  
40  
41  
42  
43  
44  
45  
46  
47  
48  
49  
50  
51  
52  
53  
54  
55  
56  
57  
58  
59  
60

1  
2  
3 20% across regions, and no particular patterns can be observed. Other aspects of the  
4  
5 local labour markets that would enable us to investigate regional unemployment  
6  
7 further, such as unionisation rates and wage bargaining, are not captured by the LFS  
8  
9 questionnaire, or other widely available sources. In addition, an interesting study  
10  
11 would be to examine how workers' mobility is related to levels of unemployment.  
12  
13 However, this is not possible, since the variable that captures the responses of  
14  
15 commuting patterns across the regions of Greece was omitted from the LFS data.  
16  
17  
18

19  
20 [Figures 1,2,3,4,5 HERE]  
21

22 Figure 6 illustrates how the incidence of unemployment and long-term unemployment  
23  
24 varies across regions in Greece, as estimated by the analysis of LIVANOS, 2007, and  
25  
26 LIVANOS, FORTHCOMING. As Figure 6 suggests, whether an individual is  
27  
28 employed or unemployed, short or long term-unemployment is affected greatly by the  
29  
30 region in which he/she resides. The vertical axis shows the chances of someone being  
31  
32 unemployed/long-term unemployed, as compared with residents of Athens (which in  
33  
34 the analysis of Livanos is set as reference category). Where the value of the vertical  
35  
36 axis is more than 1, this suggests that an individual has a higher chance of being  
37  
38 unemployed/long-term unemployed, when compared with residents of Athens and  
39  
40 *visa versa*. In general, residents of southern regions of Greece (e.g. Crete, Ionian  
41  
42 Island, North and South Aegean) seem to be better off in the Greek labour market  
43  
44 than residents of northern and central regions (e.g. Western Macedonia, Central  
45  
46 Macedonia, Ipeiros, Thessaly), as they have a better chance of being employed (than  
47  
48 unemployed) and short-term (than long-term) unemployed.  
49  
50

51  
52 [Figure 6 HERE]  
53  
54

55  
56 A possible explanation for these significant disparities across Greek regions could be  
57  
58 the low levels of labour mobility. OSWALD, 1999, argues that the rate of  
59  
60

1  
2  
3  
4 unemployment of an economy depends on the ease with which its citizens can move  
5  
6 around in order to find employment. MORRISON et al, 2006, found, in fact, that  
7  
8 groups of workers that experience low geographical mobility (e.g. older workers,  
9  
10 those with lower education) are fairly responsive to changes in the local employment  
11  
12 rate. The same study suggests that an attempt to reduce the vulnerability of these  
13  
14 workers will require increases in the geographical mobility of these workers.  
15  
16

17  
18  
19  
20 Greece has experienced three big influxes of population into Athens during the 1920s  
21  
22 and 1950s, and into Athens and Thessalonica during 1980s. This created a very  
23  
24 uneven distribution of both Greek industry (almost 60% of industrial employment and  
25  
26 establishments are situated in these two urban cities) and the Greek population  
27  
28 (almost 40% of the population reside in these cities). However, labour mobility  
29  
30 remains at very low levels nowadays, mainly on account of socio-economic reasons.  
31  
32 For example, low mobility can be attributed to issues of cultural, as the existing strong  
33  
34 bonds with family and birthplace often prevent workers from moving elsewhere in  
35  
36 order to find employment. A further explanation of low mobility in Greece is the high  
37  
38 levels of home ownership, which in general is found to affect mobility negatively  
39  
40 (BARCELO, 2002). Regarding Greece, a study by MULDER, 2006, reports that  
41  
42 home ownership is over 75%, one of the highest figures in Europe. Naturally, other  
43  
44 reasons for low mobility exist, such as insufficient; transportation system and road  
45  
46 infrastructure, all of which prevent commuting for working purposes.  
47  
48  
49  
50  
51  
52  
53  
54  
55  
56  
57  
58  
59  
60

## 5. Data and methods

The analysis draws on micro data from the Labour Force Survey (LFS). In particular, annual cross-sections for the period 2000-2004 (spring quarter) are used. The Greek LFS is conducted by the National Statistical Service of Greece (ESYE). Since 1998, the LFS is conducted four times per year, in order to meet the standards set by Eurostat. The questionnaire used comprises approximately 100 questions and both its questions and definitions are based on the European LFS (see EUROPEAN COMMUNITIES, 2003). The sample of the survey is 30,000 households, and includes approximately 80,000 observations. Since the LFS is a sample survey, ESYE follows weighting procedures that are accordance with EU guidelines<sup>iv</sup>. The five individual datasets were pooled together into a unique one. For the purposes of our econometric analysis, only those individuals that are classified as wage earners are utilized. The total number of individual cases (employees) examined is approximately 80,000. The inclusion of a wage variable since 2000 makes the estimation of a wage curve for Greece possible. The data on wages refer to net income from main employment. The wage variable in the LFS questionnaire distinguishes 6 income bands for the years 2000, 2001 and 2002, and 8 income bands for 2003 and 2004. For our purposes, the median wage of each band is calculated, and its logarithm is used as the pay variable of the analysis. Regarding the region variable, LFS adopts the 2 level Nomenclature of Territorial Units for Statistics (NUTS), and defines 13 Peripheries of Greece. NUTS 3 level detail, which would increase the variation in the sample, is not available in the Greek LFS micro-data due to the anonymization process of ESYE. As for the unemployment variable the analysis utilizes rates of unemployment for each of the 13 regions. Finally, the weighted population variable, provided by ESYE, is



1  
2  
3 applied to our analysis, in order to obtain the total population of the labour market  
4  
5 variables presented in this paper.  
6  
7

8  
9  
10 As with BLANCHFLOWER and OSWALD, 1990, the specification of the wage  
11  
12 curve used is:  
13

$$14 \log w_{irt} = \alpha \log U_{rt} + \beta X_{irt} + \delta_r + \gamma_t + \varepsilon_{irt} \dots\dots\dots (1),$$

15  
16  
17 where  $w_{irt}$  is the nominal monthly wage for the individual  $i$  observed in region  $r$  in  
18  
19 period  $t$ ,  $U_{rt}$  is the unemployment rate in region  $r$  in period  $t$ ,  $\delta_r$  and  $\gamma_t$  are region and  
20  
21 time effects and  $\varepsilon_{irt}$  is the error term. A set of key personal characteristics of the  
22  
23 individual  $i$ , is included in the specification and is denoted by  $X_{irt}$ . The decision about  
24  
25 the dummy variables used in the specification was made by judgments based on the  
26  
27 literature on the wage curve and the data available in the Greek LFS. The variables  
28  
29 chosen include; sector of economic activity, head of household control (HH  
30  
31 henceforth), age-group, marital status, type of employer, occupation, and education  
32  
33 dummies. The grouping of these variables is heavily based on the one used in the LFS  
34  
35 questionnaire. The sector of economic activity variable classifies the individual in the  
36  
37 three main sectors of the economy; primary, secondary and tertiary. The position in  
38  
39 the household distinguishes between HH and a set of other positions (partner,  
40  
41 children, parents, other relatives, and other), which for the purposes of this paper are  
42  
43 grouped as non-HH. The age group variable splits the workforce into ten year age  
44  
45 bands, and includes all individuals in employment (students included). The use of a  
46  
47 quadratic in age, which is a common practice in the wage curve literature, was not  
48  
49 possible, since ESYE omits (due to anonymization reasons) the age variable and  
50  
51  
52  
53  
54  
55  
56  
57  
58  
59  
60

1  
2  
3 replaces it with the age-bands one. Regarding the type of employer, the relevant  
4 variable distinguishes between six types of public organization and one type of private  
5 organization. This variable has been grouped into two main types; private and public.  
6  
7 The occupation variable uses ESYE's 1 digit occupational classification (STEP-92),  
8 which is in turn based on the International Standard Classification of Occupations  
9 ISCO 88 (COM). Finally, the education variable is based on the International  
10 Standard Classification of Education (ISCED 1997) and offers twenty-six categories  
11 of education distinguishing by level of education and subject of undergraduate degree.  
12 For the purposes of this paper, this variable was grouped to four main levels of  
13 education; post-graduate, graduate, other qualifications (colleges, vocational  
14 qualifications), and secondary schooling of below.  
15  
16  
17  
18  
19  
20  
21  
22  
23  
24  
25  
26  
27  
28  
29  
30  
31

## 32 **6. The Greek wage curve**

33  
34 Table 2 summarizes the main results. Row 1 displays the OLS estimates of the wage  
35 curve elasticity ( $\beta$ ) in equation (1). The rest of the rows in Table 2 report the  
36 coefficients on the personal control variables. The results of the estimated model are  
37 robust, as all coefficients are statistically significant at the 5% level. The  
38 specifications include regional fixed-effects models. An unemployment elasticity of -  
39 .15 is found to exist, when regional fixed-effects are allowed for. This suggests that a  
40 10% rise in regional unemployment in Greece will cause local wages to drop by  
41 approximately 1.5%. This finding opposes the popular view that wage flexibility in  
42 Greece is limited. This level of unemployment elasticity of pay is fairly similar to  
43 other studies across a wide range of countries and time periods (see  
44 BLANCHFLOWER and OSWALD, 2000; SANZ-DE- GALDEANO, forthcoming).  
45  
46  
47  
48  
49  
50  
51  
52  
53  
54  
55  
56  
57  
58  
59  
60

1  
2  
3 Nevertheless, contrary to most studies (see NIJKAMP and POOT, 2005), the  
4 inclusion of time fixed-effects influences the elasticity considerably. As can be seen  
5 from Table 2, unemployment elasticity tends to be smaller in magnitude for time  
6 fixed-effects than for regional fixed-effects. This finding suggests that Greece has a  
7 very strong cross-section wage curve, which when time controls are included, drops to  
8 vary low. However, this may be because of the fact that this paper uses a nominal,  
9 rather than real wage measure. Moreover, when both time and location fixed-effects  
10 are calculated, the unemployment elasticity drops to barely -0.02. However, this is  
11 due to the small number of years available for research. Also, the measurement error  
12 causes attenuation bias and has a downward effect on the fixed-effects estimates.  
13  
14  
15  
16  
17  
18  
19  
20  
21  
22  
23  
24  
25

26 [Table 2 HERE]

27  
28 In addition to fixed-effects models, random-effects models have also been estimated.  
29 The regression estimating random-effects used the same set of variables as the one  
30 estimating fixed-effects. The results of this analysis were very similar to the results  
31 using fixed-effects. The estimates of this analysis were robust, and most of the  
32 variables were statistically significant. In particular, the GLS estimates suggest that  
33 the unemployment elasticity of pay is -0.14. In order to assess whether the two models  
34 are statistically different, the HAUSMAN, 1978, was used. This test, based on the  
35 random-versus fixed-effects estimators, cannot reject the null hypothesis (individual  
36 effects are uncorrelated with the other regressors in the model). Therefore, it cannot  
37 be said that a random-effects model is preferred to a fixed-effects model<sup>v</sup>. Hence, for  
38 the illustrative purposes of this paper, the results of the fixed-effects model are used.  
39  
40  
41  
42  
43  
44  
45  
46  
47  
48  
49  
50  
51  
52  
53  
54  
55  
56  
57  
58  
59  
60

1  
2  
3 Another issue that was be taken into consideration is the fact that the literature  
4 (MOULTON, 1990) suggests that state-level variables often exaggerate the levels of  
5 statistical significance. In particular, CARD, 1995, found that unadjusted OLS  
6 estimation overstate the t-ratio of the wage curve elasticity by approximately a factor  
7 of 2. Thus, the present study corrects the standard errors for clustered observations. In  
8 particular, the HUBER, 1967/WHITE, 1980, robust estimates of the standard errors  
9 were computed. The specification calculated used clustered data by time.

## 22 **7. Wage structures in Greece**

23  
24 The coefficients on the personal control variables of the original model, presented in  
25 Table 2, provide information on wage structures in Greece. The findings are largely in  
26 line with other empirical studies on wage structures for Greece. The negative  
27 coefficient on the non-HH dummy shows that, controlling for all the other  
28 explanatory variables, the mean salary of individuals that are non-HH is lower by 7%  
29 than the mean salary of HH workers. This finding comes as little surprise, given that  
30 the HH has greater financial responsibilities, and hence puts greater effort into  
31 achieving higher levels of income. In addition, males, who traditionally have the role  
32 of the “breadwinner” in the Greek society usually receive in general higher wages  
33 than females (KANELLOPOULOS and MAVROMARAS, 2002). As with the above,  
34 the mean wage for married individuals is higher than for single (or others). Moreover,  
35 the coefficients of the age-group dummies imply a positive rate of return to age,  
36 which finding is not surprising as the fact that income increases with age is a well  
37 documented fact. Regarding the type of employer, the mean wage was found to be  
38 higher for employees of the public sector than employees of the private, which is in  
39 line with the evidence of KANELLOPOULOS, 1997, and PAPAPETROU, 2006.  
40  
41  
42  
43  
44  
45  
46  
47  
48  
49  
50  
51  
52  
53  
54  
55  
56  
57  
58  
59  
60

1  
2  
3  
4 Regarding the level of education, evidence implies that pay increases when the level  
5  
6 of education increases. In particular, it is found that someone who holds a university  
7  
8 degree receives higher pay than someone with no higher education qualification, but  
9  
10 less than someone that holds a PhD degree. Finally, most of the coefficients of the  
11  
12 sector and occupation dummies are statistically significant, and reflect that the  
13  
14 average wage differs according to the sector and occupation that the individual  
15  
16 operates in.  
17  
18  
19  
20  
21

## 22 **8. Wage curves for various groups of workers**

23  
24 Table 3 reports the unemployment elasticities for the different groups of employees  
25  
26 The elasticities in Table 3 are estimated by splitting the sample and running separate  
27  
28 regressions for each group<sup>vi</sup>. The specification used, whose results are presented in  
29  
30 this paper, is the same as in equation (1).  
31  
32  
33  
34  
35

36 The empirical results of this analysis suggest that wages for females are more  
37  
38 responsive to regional unemployment rates than the wages of males (-0.18 and -0.13  
39  
40 respectively). Evidence also suggests that university graduates are more affected by  
41  
42 local unemployment rates than individuals with other levels of education. The above  
43  
44 two findings are opposite to most of the results of similar empirical studies for other  
45  
46 countries (e.g. CARD, 1995). Regarding females, it is not surprising that as they are  
47  
48 usually secondary earners in Greek households, they are usually rewarded with lower  
49  
50 wages than males in the labour market, and therefore may be more willing to accept  
51  
52 wage cuts than males, who are the primary earners. As for the high elasticity of  
53  
54 graduates, this might be explained by the fact that graduate unemployment in Greece  
55  
56 is relatively high. In particular, various studies (e.g. LIVANOS, 2007) have  
57  
58  
59  
60

1  
2  
3 highlighted the difficulties that graduates face in the Greek labour market. As for the  
4  
5 high level of graduate wage flexibility, a possible explanation could be that graduates,  
6  
7 whose employability is clearly affected by the high levels of unemployment amongst  
8  
9 them, may have to lower their compensation considerably in order to find  
10  
11 employment. Moreover, the wages of single (or other) individuals are more  
12  
13 responsive to local unemployment when compared to married individuals. Similarly,  
14  
15 the wages of employees that are not HH are more responsive to local wages than HH.  
16  
17 Results for the different age-groups are less clear cut than other variables. However,  
18  
19 the results suggest that prime-aged workers (25-34) are the most responsive group to  
20  
21 local unemployment. On the other hand, older workers (55+) are the least responsive  
22  
23 (-0.09).  
24  
25  
26  
27  
28

29 [Table 3 HERE]  
30

31  
32 The role of regional conditions in wage bargaining is also considerably different for  
33  
34 employees of the private and the public sector. In particular, OLS estimates suggest  
35  
36 that employees of the private sector are much more responsive to local unemployment  
37  
38 rates than public sector employees (-0.19 and -0.08 respectively). The above is in line  
39  
40 with most of the findings in the literature (e.g. CARD, 1995), and does not come as a  
41  
42 surprise as the private sector is generally much more flexible than the public sector.  
43  
44  
45  
46  
47

48  
49 The fact that the level of unemployment varies considerably across different regions  
50  
51 in Greece allows to estimate the wage curve for two types of regions; regions with  
52  
53 low unemployment, less than 10%, and regions with high level of unemployment,  
54  
55 10% or more. The results, displayed in rows 20 & 21 of Table 3, suggest that the  
56  
57 wages of employees in regions with low unemployment are in fact responsive to the  
58  
59 regional unemployment rates. On the other hand, the results for regions with high  
60

1  
2  
3 unemployment suggest that there is no statistically significant relationship between  
4 the wage level and the rates of local unemployment. This finding might actually serve  
5 to suggest that workers in regions with high levels unemployment decide to immigrate  
6 to regions where unemployment is lower, or even exit the workforce, and hence no  
7 relationship if found. On the other hand, workers in regions where unemployment is  
8 lower than 10% are more responsive to a rise in the level of unemployment, since they  
9 will probably not consider emigrating to a region where unemployment is high.  
10  
11  
12  
13  
14  
15  
16  
17  
18  
19  
20  
21

### 22 **9. Is there a wage curve in the longer-term?**

23  
24 Finally, this study examines whether a positive relationship exists between wages and  
25 unemployment in the longer-term. In particular, we examine the relationship between  
26 time-averaged regional wages and unemployment over the 5-year-period that we have  
27 data for. Indeed, when we do so, we find a statistically significant positive correlation  
28 (0.19) between the two variables. Figure 7 consists of a scatter plot illustrating this  
29 relationship. This positive relationship serves to suggest that in the longer-term, the  
30 wage curve relationship vanishes. This fact could be due to exogenous shocks that  
31 originate within the local labour markets, such as permanent change in the level of  
32 amenities. Also, it might suggest that in the longer run, workers move between  
33 regions and thus, the wage curve relationship vanishes. This finding confirms the  
34 notion that the wage curve is a short-term business cycle phenomenon (NIJKAMP  
35 and POOT, 2005).  
36  
37  
38  
39  
40  
41  
42  
43  
44  
45  
46  
47  
48  
49  
50  
51

52 [Figure 7 HERE]  
53  
54  
55  
56  
57  
58  
59  
60

## 10. Conclusions

Over the last two decades, the study of the wage curve has provided a new platform for researching local labour markets. The existence of a negative relationship between wages and local unemployment has various implications for the behavior of labour markets. For example, if a region has low unemployment rates and high wages, then workers from other regions might move to this more attractive, region (BLANCHFLOWER and OSWALD, 1994). Evidence from various countries suggests that the relationship between the real wage, paid to the employees, and the rate of unemployment in a local labour market is inverse, and the unemployment elasticity of pay is -0.1.

So far, to the best of our knowledge, this relationship has not been researched in Greece, even though Greece seems to be an interesting case due to the large differences in regional unemployment and the low levels of wage flexibility. This study used recently available micro data from the Labour Force Survey over the period 2000-2004. Contrary to the conclusions of OECD, this study finds much evidence of wage flexibility. The overall wage curve elasticity was found to be -0.15. This level of elasticity corresponds to findings from various studies other countries and suggests that local wages in Greece are, indeed, quite responsive to an increase in unemployment. A possible explanation of high wage flexibility could be the limited levels of labour mobility, which make workers very responsive to local labour market conditions. However, despite the fact that a short-run wage curve was found to exist, the relationship seems to be positive in the longer run.



1  
2  
3 This study could provide a new platform of discussion with regards to policies aiming  
4 at tackling unemployment. In particular, even though wage rigidity has been  
5 suggested to be a cause of high unemployment in Greece, this study did not find  
6 evidence of low wage flexibility. Therefore, the policy recommendation of OECD is  
7 somewhat arbitrary. On the other hand, policies that facilitate labour mobility across  
8 regions in Greece could be useful for tackling unemployment.  
9  
10  
11  
12  
13  
14  
15  
16  
17  
18  
19

20 Regarding the wage curve, slopes for the various groups of workers are found to vary  
21 considerably. In particular, there are some groups of workers who can protect  
22 themselves against external shocks, and isolate their wages from the behaviour of the  
23 local labour markets. These groups include males as well as employees of the public  
24 sector. On the contrary females and private sector employees seem to be vulnerable  
25 in the Greek labour market, and are the main candidates for wage reductions in cases  
26 where unemployment increases. Regarding females, the finding of this study (i.e.  
27 higher elasticity of pay than males) could be attributed to the fact that females are in  
28 most cases secondary earners, and therefore are more likely to accept wage cuts than  
29 males. Similarly, non- HH individuals are also found to be more responsive. As for  
30 employees of the private sector, these are more likely to experience wage reduction as  
31 they are generally less protected in the labour market than those of the public sector.  
32  
33  
34  
35  
36  
37  
38  
39  
40  
41  
42  
43  
44  
45  
46  
47  
48  
49  
50

51 A surprising fact in this study is that graduates are actually the most responsive  
52 groups of workers to the rising levels of unemployment, although one might expect  
53 that they are less responsive to external shocks due to the high qualifications they  
54 possess. This highlights a wider problem of the Greek labour market, where graduates  
55 face high levels of unemployment while the level of one's qualification is not found to  
56  
57  
58  
59  
60

1  
2  
3 affect his/hers employment probabilities. This evidence regarding graduate  
4 employability raises questions about the (employment) value of higher (tertiary)  
5 education. This should be taken into consideration by policy makers in Greece, who  
6 over the last two decades have focused on increasing the numbers of students who  
7 pursue higher education (KANELLOPOULOS 2003). Thus, the rapid growth of  
8 education in Greece has had an impact on graduates' employability. However, this  
9 phenomenon is not unique to Greece. Neighboring Turkey has experienced similar  
10 problems (ERC, 2005). Again, the above could contribute to low geographic mobility  
11 and the fact that graduates who reside in regions with high unemployment may not  
12 decide to immigrate to other regions in order to find employment.  
13  
14  
15  
16  
17  
18  
19  
20  
21  
22  
23  
24  
25  
26  
27  
28

29 The large differences in the levels of unemployment across regions in Greece have  
30 allowed us to estimate wage curves for regions with high and low unemployment  
31 separately. We found evidence of elasticity of pay for the regions with low level of  
32 unemployment but not for those with unemployment over 10%. This might serve to  
33 suggest that workers in regions where unemployment is already high, may decide to  
34 exit the workforce or perhaps emigrate to other regions in the case of a further  
35 increase of unemployment. On the other hand, workers of regions where  
36 unemployment is low, are less discouraged to exit the workforce while the option of  
37 immigrating to other regions would seem less appealing to them, and may thus be  
38 more responsive to the shock of unemployment.  
39  
40  
41  
42  
43  
44  
45  
46  
47  
48  
49  
50  
51  
52  
53

54 An interesting point for further research would be to assess how wage curve  
55 elasticities for various groups of workers compare with the levels of geographic  
56 mobility of these groups. This would require the LFS questionnaire to include and  
57  
58  
59  
60

1  
2  
3 make available more questions regarding commuting and immigration. Also LFS data  
4  
5 that would provide greater level of regional desegregation (NUTS-3), and the  
6  
7 inclusion of additional questions (e.g. unionization rates) would increase the variation  
8  
9 in the sample and will make possible to examine the wage curve in greater detail.  
10  
11  
12

### 13 14 15 **Acknowledgements**

16  
17 The author is grateful to Professor Andrew Oswald for his useful guidance,  
18  
19 suggestions and comments during the different stages of this paper. The author would  
20  
21 also like to thank Anne Green for her various suggestions. The author is also grateful  
22  
23 to the editors of Regional Studies and the two anonymous referees for their useful  
24  
25 suggestions. Not least, the author would like to thank Cagri Yalkin for her useful  
26  
27 comments.  
28  
29  
30  
31  
32  
33  
34  
35  
36  
37  
38  
39  
40  
41  
42  
43  
44  
45  
46  
47  
48  
49  
50  
51  
52  
53  
54  
55  
56  
57  
58  
59  
60

## References

- ALBAEK K., ASPLUND R., BLOMSKOG S., BARTH, E., GUMMUNDSOON R.,  
KARLSSON V. and MADSEN E.S. (2000) Dimensions of the wage-  
unemployment relationship in the Nordic countries: wage flexibility without  
wage curve. *Research in Labour Economics* **19**, pp. 345-381.
- AZARIADIS C. (1975) Implicit contracts and underemployment equilibria, *Journal  
of Political Economy* **83**, pp. 1183–1202.
- BABETSII I. (2005) Aggregate Wage Flexibility in Selected New EU Member  
States, *Czech National Bank Research Project*, No. E2/2005.
- BAILY M. N. (1974). Wages and employment under uncertain demand, *Review of  
Economic Studies* **41**, pp. 37–50.
- BALTAGI B.H. and BLIEN U. (1998) The German wage curve: evidence from the  
IAB employment sample, *Economics Letters* **61**, pp.135-142.
- BARCELO C. (2002) Housing Tenure and Labour Mobility: A comparison across  
European Countries, Bank of Spain, *CEMEI Working Paper* No 0302
- BLANCHARD O. and L. KATZ (1999) Wage dynamics: reconciling theory and  
evidence, *American Economic Review* **89**, pp. 69-74.
- BLANCHFLOWER D.G. and OSWALD A.J. (1994) *The Wage Curve* (Cambridge,  
MIT Press).
- BLANCHFLOWER D.G. and OSWALD A.J. (1990) The Wage Curve, *Scandinavian  
Journal of Economics* **92**, pp.215-237.
- BLANCHFLOWER, D.G. and OSWALD A.J. (2005) The Wage Curve Reloaded,  
NBER paper, No. 11338
- CAMPBELL, C. and ORSZAG J. M. (1998) A model of the wage curve, *Economics  
Letters* **59**, pp. 119–25.

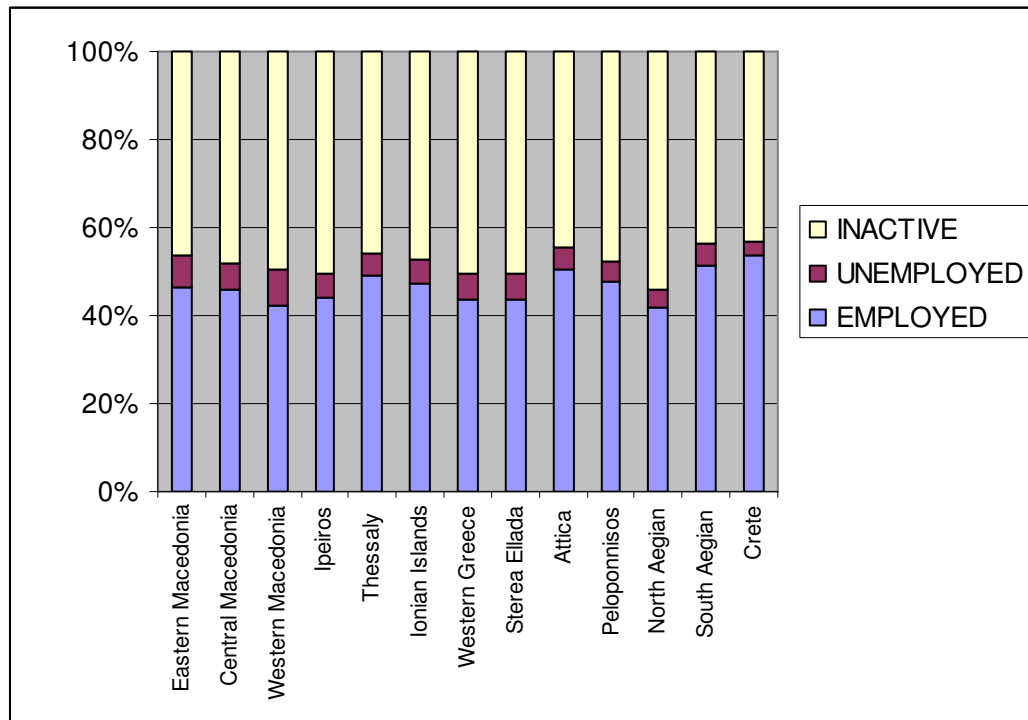
- 1  
2  
3 CARD D. (1995) The wage curve: a review, *Journal of Economic Literature* **33**, pp.  
4  
5 785-799.  
6  
7  
8 CARD, D. and HYSLOP, D. (1997) Does inflation 'grease the wheels' of the labor  
9  
10 market?' in ROMER, C.D. and ROMER, D.H. (eds) *Reducing inflation:*  
11  
12 *motivation and strategy* NBER Studies in Business Cycles, vol. 30. Chicago  
13  
14 and London: University of Chicago Press pp. 71-114.  
15  
16  
17 CLAR M., DREGER C. and RAMOS R. (2007) Wage flexibility and labour market  
18  
19 institutions: a meta-analysis, *KYKLOS* **60**, 2, pp. 145-163.  
20  
21  
22 DE MENIL, G. (1971) *Bargaining: Monopoly Power Versus Union Power*,  
23  
24 *Cambridge*, MIT Press.  
25  
26  
27 ECONOMIC RESEARCH FORUM (2005) *Turkey country profile: The road ahead*  
28  
29 *for Turkey*, Cairo, Economic Research Forum.  
30  
31  
32 ELHORST, P. (2003) The mystery of regional unemployment differentials:  
33  
34 theoretical and empirical explanations, *Journal of Economic Surveys* **17**, 5, pp  
35  
36 709-747.  
37  
38  
39 EUROPEAN COMMISSION (2006) *Unemployment in Europe 2006*, European  
40  
41 Commission, Employment and Social Affairs, Brussels.  
42  
43  
44 EUROSTAT (2006) *Labour Force Survey Anonymised data sets*, European  
45  
46 Commission, Directorate F: Social Statistics and Information Society.  
47  
48  
49 GARCIA-MAINAR I. and MONTUENGA-GOMEZ V. (2003) The Spanish Wage  
50  
51 Curve: 1994-1996, *Regional Studies* **37**,9, pp. 929-945.  
52  
53  
54 HARRIS R. and TODARO M. (1970) Migration, unemployment and development: A  
55  
56 wo sector analysis, *American Economic Review* **60**, pp.126-142.  
57  
58  
59 HAUSMAN S.A. (1978) Specification tests in econometrics, *Econometrica* **46**, pp.  
60  
1251-1271.

- 1  
2  
3 HUBER P. J. (1967) *The Behavior of Maximum Likelihood Estimation under*  
4  
5 *Nonstandard Conditions*, in: L. M. LECAM and J. NEYMAN, (Eds)  
6  
7 *Proceedings of the Fifth Berkeley Symposium on Mathematical Statistics*  
8  
9 *and Probability* **1**, pp. 221-233.  
10  
11  
12 JANSSENS S. and KONINGS J. (1998) One more wage curve: the case of Belgium,  
13  
14 *Economics Letters* **60**, pp. 223-227.  
15  
16  
17 KANELLOPOULOS C. (1997) Public-private wage differentials in Greece, *Applied*  
18  
19 *Economics* **29**, pp. 1023-1032.  
20  
21  
22 KANELLOPOULOS C. and MAVROMARAS K. (2002) Male-Female Labour  
23  
24 Market Participation and Wage Differentials in Greece, *Labour* **16**, 4, 771-801  
25  
26  
27 KANELLOPOULOS, C. (2003) Education and Employment, *Economic Perspectives*,  
28  
29 **4** (in Greek).  
30  
31  
32 LIVANOS I. (2007) The incidence of long-term unemployment in Greece, *Applied*  
33  
34 *Economics Letters* **14**, 4-6, pp. 405-408.  
35  
36  
37 LIVANOS I. (Forthcoming) Modelling the incidence of unemployment in Greece,  
38  
39 *Applied Economics Letters*.  
40  
41  
42 LUCIFORA C. and ORIGO F. (1999) Alla Ricerca Della Flessibilita: Un' Analisi  
43  
44 della Curva del Salari in Italia, *Rivista Italiana degli Economicisti* **4**, pp. 3-35.  
45  
46  
47 MARSTON S.T. (1985) Two views of the geographic distribution of unemployment,  
48  
49 *Quarterly Journal of Economics* **100**, pp. 57-79.  
50  
51  
52 MICHELIS L., PAPADOPOULOS A. and PAPANIKOSG. (2004) Regional  
53  
54 convergence in Greece in the 1980's: an econometric investigation, *Applied*  
55  
56 *Economics* **26**, pp. 881-888.  
57  
58  
59 MILAS C. (1999) Long-run structural estimation of labour market equations with an  
60  
application to Greece, *Economic Modelling* **16**, pp. 149-161.

- 1  
2  
3 MORRISON P., PAPPS K. and POOT J. (2006) Wages, employment, labour turnover  
4 and the accessibility of local labour markets, *Labour Economics* **13**, pp. 639-  
5  
6  
7  
8 663.  
9
- 10 MOULTON B.R. (1990) An illustration of a pitfall in estimating the effects of  
11 aggregate variables on micro units, *Review of Economics and Statistics* **72**,  
12  
13 pp. 334-338.  
14
- 15 MULDER C. (2006) Home-ownership and family formation, *Journal of Housing*  
16  
17  
18  
19  
20  
21  
22  
23  
24  
25  
26  
27  
28  
29  
30  
31  
32  
33  
34  
35  
36  
37  
38  
39  
40  
41  
42  
43  
44  
45  
46  
47  
48  
49  
50  
51  
52  
53  
54  
55  
56  
57  
58  
59  
60
- MULDAL, G. (1957) *Economic Theory and Under-Developed Regions*,  
Duckworth, London.
- NIJKAMP P. and POOT J. (2005) The last word on the wage curve? *Journal of*  
*Economic Surveys* **19**, pp. 421- 450.
- OECD (2005) *Economic Survey of Greece*, OECD, Paris.
- OSWALD A. (1999) *The Housing Market and Europe's Unemployment: A non-*  
*Technical Paper*, Department of Economics, University of Warwick
- PAPAPETROU E. (2006) The unequal distribution of the public-private sector wage  
gap in Greece: evidence from quantile regression, *Applied Economics Letters*  
**13**, pp. 205-210.
- PARTIDGE M.D. and RICHMAN D.S. (1997) Has the wage curve nullified the  
Harris Todaro model? Further US evidence, *Economics Letters* **54**, pp. 277-  
282.
- PHELPS E. (1994) *Structural slumps: The Modern Equilibrium Theory of*  
*Unemployment, Interest and Assets*. Cambridge: Harvard University Press.

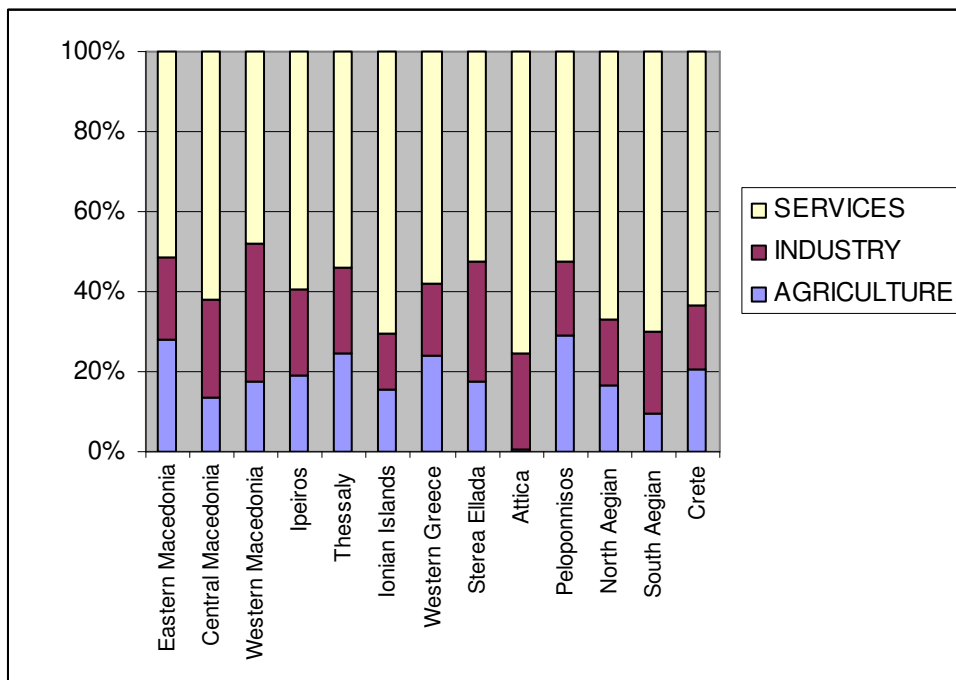
- 1  
2  
3 PHILLIPS A.W. (1958) The relation between unemployment and the rate of change  
4  
5 of money wage rates in the United Kingdom, 1861-1957, *Economica* **25**, pp.  
6  
7 283-299.  
8  
9  
10 PUGA, D. (2002) *European Journal of Economic Geography* **2**, 373-406.  
11  
12 SALOP, S. (1979) A model of the natural rate of unemployment, *American Economic*  
13  
14 *Review* **69**, pp. 117–125.  
15  
16  
17 SANZ-DE-GADEANO A. and TURUNEN J. (forthcoming) The Euro Area Wage  
18  
19 Curve, *Economics Letters*.  
20  
21  
22 SATO Y. (2000) Search theory and the wage curve, *Economics Letters* **66**, 1, pp. 93-  
23  
24 98  
25  
26  
27 SHAPIRTO C. and STIGLITZ, J. E. (1984) Equilibrium unemployment as a worker  
28  
29 discipline device, *American Economic Review* **74**, pp. 433–444.  
30  
31  
32 SIRIOPOULOS C. and ASTERIOU D. (1998) Testing for Convergence Across the  
33  
34 Greek Regions, *Regional Studies* **32**, 6, pp. 537 -546  
35  
36  
37 TSIONAS E. (2002) Another Look at Regional Convergence in Greece, *Regional*  
38  
39 *Studies* **35**, 6, pp. 603-609  
40  
41  
42 WHITE H. (1980) A Heteroskedastic-Consistent Covariance Matrix Estimator and a  
43  
44 Direct Test of Heteroskedasticity, *Econometrica* **48**, pp. 817-38.  
45  
46  
47  
48  
49  
50  
51  
52  
53  
54  
55  
56  
57  
58  
59  
60





**Figure 1: Status of economic activity across regions 2004**

Source: Greek LFS micro-data 2004 (2<sup>nd</sup> quarter)

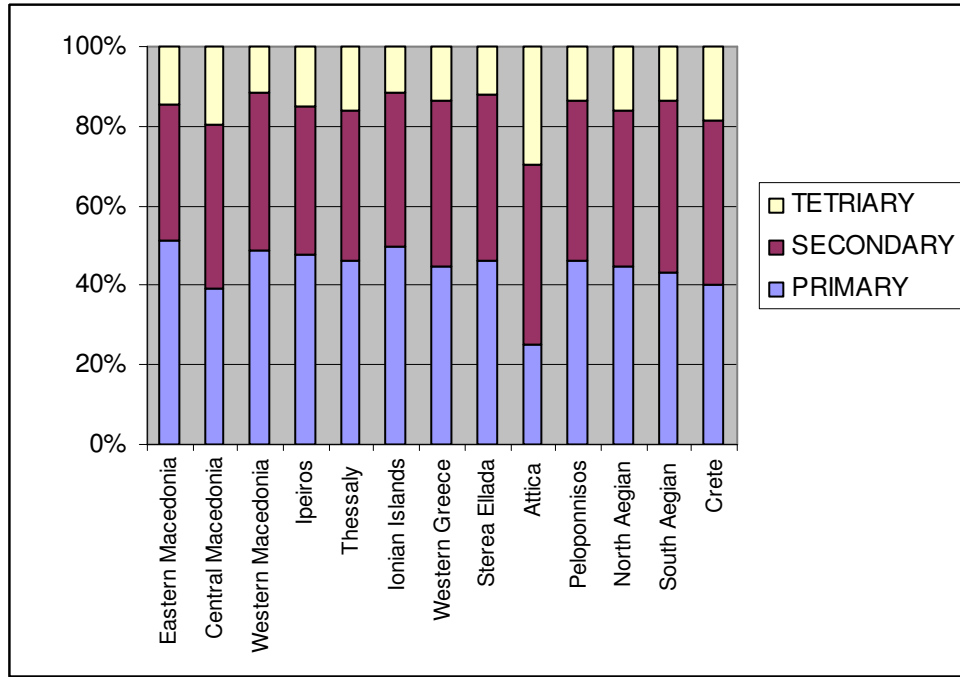


**Figure 2: Sectoral employment across regions 2004**

Source: Greek LFS micro-data 2004 (2<sup>nd</sup> quarter)

Review Only

1  
2  
3  
4  
5  
6  
7  
8  
9  
10  
11  
12  
13  
14  
15  
16  
17  
18  
19  
20  
21  
22  
23  
24  
25  
26  
27  
28  
29  
30  
31  
32  
33  
34  
35  
36  
37  
38  
39  
40  
41  
42  
43  
44  
45  
46  
47  
48  
49  
50  
51  
52  
53  
54  
55  
56  
57  
58  
59  
60

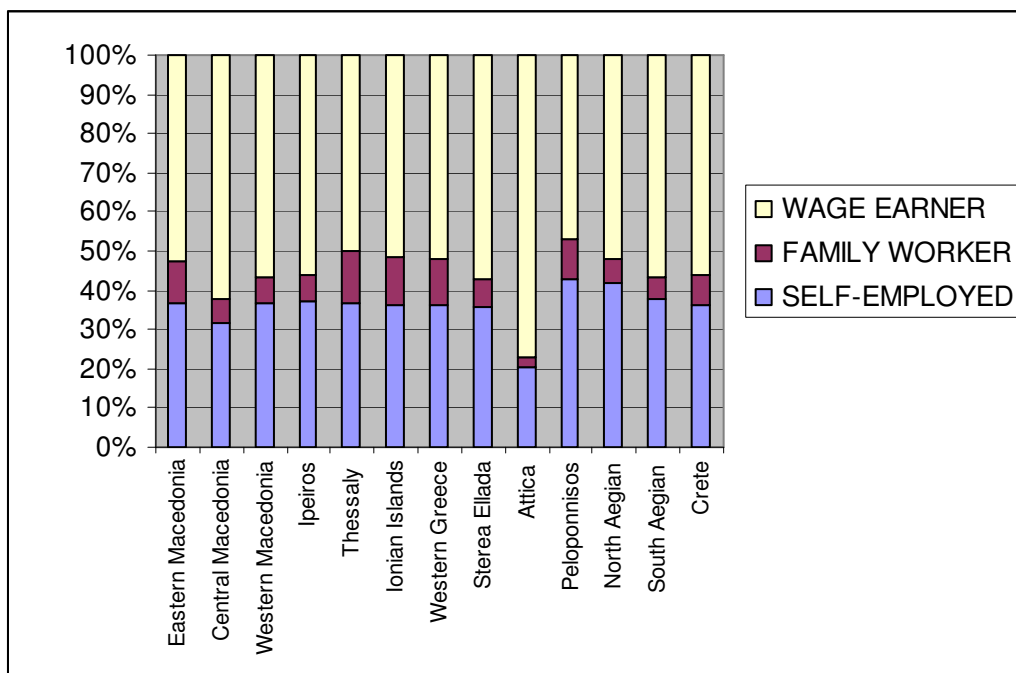


**Figure 3: Levels of education across regions 2004**

Source: Greek LFS micro-data 2004 (2<sup>nd</sup> quarter)

Pre-Review Only

1  
2  
3  
4  
5  
6  
7  
8  
9  
10  
11  
12  
13  
14  
15  
16  
17  
18  
19  
20  
21  
22  
23  
24  
25  
26  
27  
28  
29  
30  
31  
32  
33  
34  
35  
36  
37  
38  
39  
40  
41  
42  
43  
44  
45  
46  
47  
48  
49  
50  
51  
52  
53  
54  
55  
56  
57  
58  
59  
60

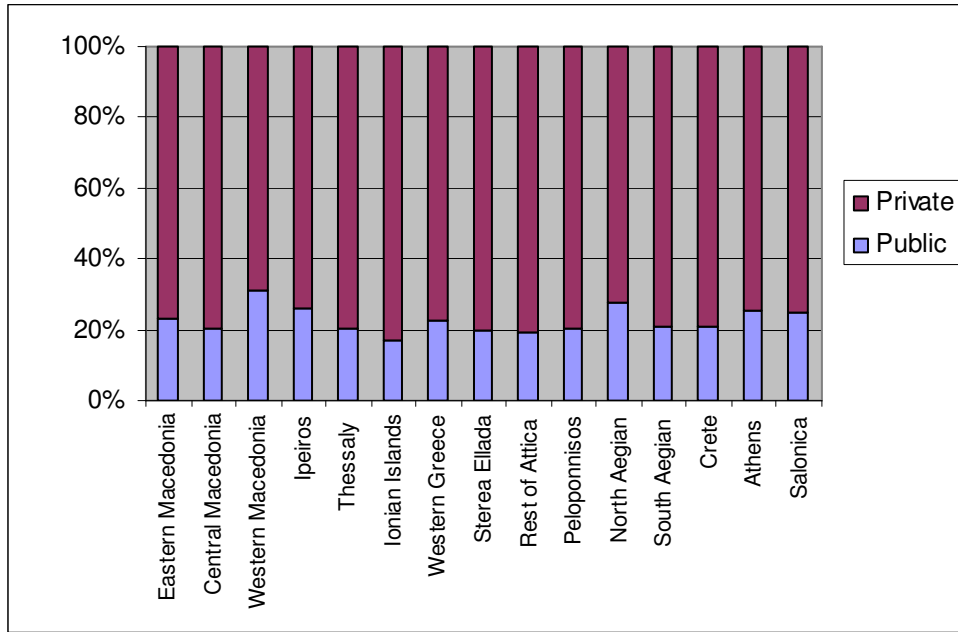


**Figure 4: Status of employment across regions 2004**

Source: Greek LFS micro-data 2004 (2<sup>nd</sup> quarter)

Pre-Review Only

1  
2  
3  
4  
5  
6  
7  
8  
9  
10  
11  
12  
13  
14  
15  
16  
17  
18  
19  
20  
21  
22  
23  
24  
25  
26  
27  
28  
29  
30  
31  
32  
33  
34  
35  
36  
37  
38  
39  
40  
41  
42  
43  
44  
45  
46  
47  
48  
49  
50  
51  
52  
53  
54  
55  
56  
57  
58  
59  
60

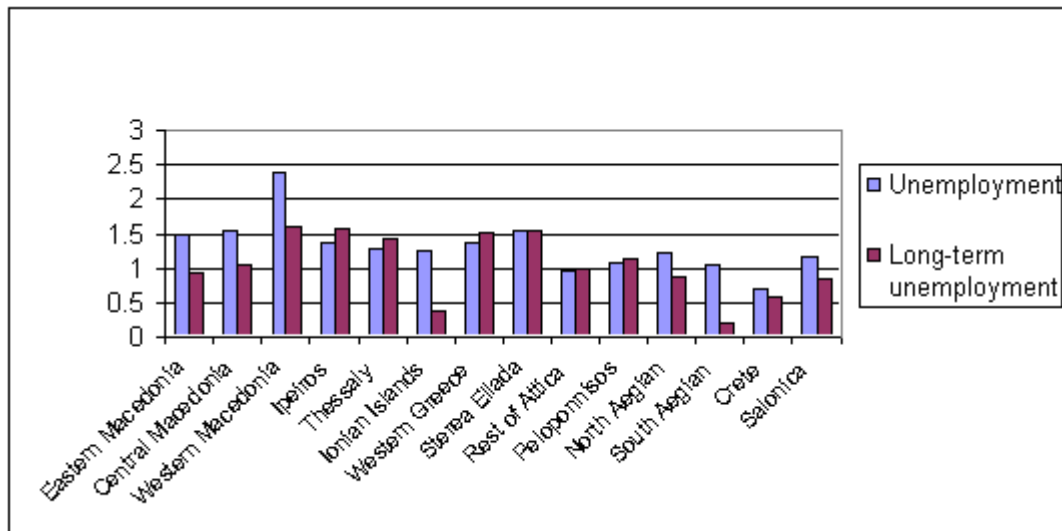


**Figure 5: Type of employer across regions 2004**

Source: Greek LFS micro-data 2004 (2<sup>nd</sup> quarter)

Peer Review Only

1  
2  
3  
4  
5  
6  
7  
8  
9  
10  
11  
12  
13  
14  
15  
16  
17  
18  
19  
20  
21  
22  
23  
24  
25  
26  
27  
28  
29  
30  
31  
32  
33  
34  
35  
36  
37  
38  
39  
40  
41  
42  
43  
44  
45  
46  
47  
48  
49  
50  
51  
52  
53  
54  
55  
56  
57  
58  
59  
60

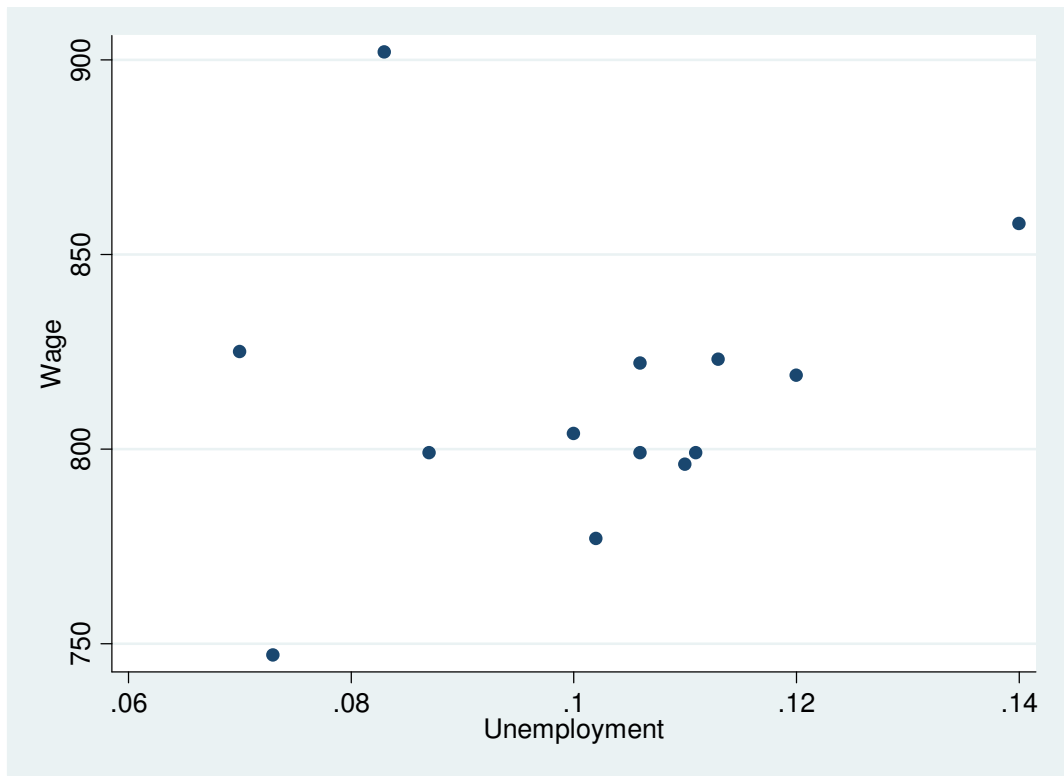


**Figure 6 The incident of unemployment and long-term unemployment in regions in Greece\***

\* Athens is set as the reference category

Source: LIVANOS, 2007, LIVANOS, forthcoming.

1  
2  
3  
4  
5  
6  
7  
8  
9  
10  
11  
12  
13  
14  
15  
16  
17  
18  
19  
20  
21  
22  
23  
24  
25  
26  
27  
28  
29  
30  
31  
32  
33  
34  
35  
36  
37  
38  
39  
40  
41  
42  
43  
44  
45  
46  
47  
48  
49  
50  
51  
52  
53  
54  
55  
56  
57  
58  
59  
60



**Figure 7 Longer-term relationship between regional wages and unemployment**

Source: Greek LFS micro-data 2004 (2<sup>nd</sup> quarter)

Review Only

**Table 1 Regional Unemployment in Greece 1998-2006 (%)**

<b>Northern Greece</b>	<b>11.9</b>
Eastern Macedonia	10.7
Central Macedonia	10.8
Western Macedonia	15.2
Thessaly	10.9
<b>Central Greece</b>	<b>10.1</b>
Ipeiros	11.9
Ionian Islands	7.4
Peloponnisos	8.3
Western Greece	10.6
Stereia Ellada	12.0
<b>Attica</b>	<b>10.1</b>
<b>Aegean Islands &amp; Crete</b>	<b>8.3</b>
Nothern Aegean	9.3
Southern Aegean	9.2
Crete	6.4
<b>All Regions</b>	<b>10.2</b>

Source: Labour Force Surveys 1998-2006, 2<sup>nd</sup> term



**Table 2 The Wage Curve for Greece 2000-2004 (LFS data, second quarter). Coefficients in the log-wage equations.**

	Fixed-effects					
	<i>Regional</i>		<i>Time</i>		<i>Regional &amp; time</i>	
<b>LnU</b>	<b>-0.15</b>	<b>(0.010)</b>	<b>-0.02</b>	<b>(0.005)</b>	<b>-0.01</b>	<b>(0.007)</b>
Not HH	-0.07	(0.003)	-0.63	(0.002)	-0.06	(0.002)
Single	-0.08	(0.002)	-0.07	(0.002)	-0.08	(0.002)
Private sector Employee	-0.18	(0.002)	-0.18	(0.002)	-0.18	(0.002)
Primary sector	-0.20	(0.011)	-0.21	(0.010)	-0.19	(0.010)
Tertiary sector	-0.03	(0.003)	-0.02	(0.003)	-0.02	(0.003)
Legislator	0.12	(0.011)	0.21	(0.011)	0.21	(0.011)
Professional	-0.04	(0.005)	0.06	(0.005)	0.06	(0.005)
Technician/ associate professional	0.02	(0.005)	0.11	(0.005)	0.11	(0.005)
Service worker	-0.07	(0.004)	0.00	(0.004)	0.00	(0.004)
Skilled agricultural worker	-0.05	(0.018)	0.03	(0.018)	0.03	(0.017)
Craft worker	-0.09	(0.004)	-0.00	(0.004)	-0.00	(0.004)
Plant operator	-0.01	(0.005)	0.07	(0.005)	0.07	(0.005)
Agegroup 15-14	-0.14	(0.005)	0.18	(0.005)	-0.17	(0.005)
Agegroup 25-34	-0.06	(0.003)	-0.07	(0.003)	-0.07	(0.003)
Agegroup 45-54	0.07	(0.003)	0.06	(0.003)	-0.00	(0.003)
Agegroup 55+	0.05	(0.004)	0.05	(0.004)	0.05	(0.004)
Post-graduate	0.11	(0.004)	0.10	(0.004)	0.10	(0.004)
Other qualifications	-0.78	(0.003)	-0.06	(0.003)	-0.06	(0.003)
Schooling or below	-0.19	(0.004)	-0.17	(0.004)	-0.17	(0.004)

*Note: The wage measure refers to nominal monthly earnings from the main job, Omitted categories: HH; married; public sector employee; secondary sector employee; clerk; age-group 35-44; graduate. Number of observations: 77,758. Standard errors are reported in parentheses. Robust estimates of standard error were computed. The standard errors are clustered at year level.*

**Table 3 Unemployment elasticities for different groups in Greece 2000-2004 (LFS data, second quarter )**

All	-0.152	(0.010)	-0.148	(0.009)
Males	-0.131	(0.012)	-0.131	(0.012)
Females	-0.181	(0.016)	-0.116	(0.009)
Primary Sector	-0.033	(0.090)	-0.051	(0.054)
Secondary Sector	-0.187	(0.019)	-0.043	(0.011)
Tertiary Sector	-0.172	(0.012)	-0.105	(0.007)
HH	-0.141	(0.014)	-0.052	(0.008)
Not HH	-0.193	(0.015)	-0.123	(0.009)
Married	-0.132	(0.012)	-0.054	(0.007)
Non-married	-0.219	(0.017)	-0.147	(0.010)
Age-group 15-14	-0.111	(0.044)		
Age-group 25-34	-0.173	(0.018)	-0.147	(0.023)
Age-group 35-44	-0.137	(0.018)	-0.119	(0.011)
Age-group 45-54	-0.127	(0.021)	-0.061	(0.011)
Age-group 55+	-0.090	(0.038)	-0.017	(0.022)
Post-graduate	-0.149	(0.024)	-0.047	(0.014)
Graduate	-0.227	(0.028)	-0.168	(0.017)
Other qualifications	-0.157	(0.014)	-0.058	(0.008)
Schooling or below	-0.096	(0.022)	-0.039	(0.013)
Regions with High Unemployment	0.030	(0.016)		
Regions with Low Unemployment	-0.142	(0.039)		
Public Sector Employees	-0.082	(0.015)	-0.041	(0.014)
Private Sector Employees	-0.193	(0.039)	-0.131	(0.008)
<b>Regional fixed effects</b>		<b>Yes</b>		<b>No</b>

*Note: Standard errors are reported in parentheses. All models include a set of control variables: 8 occupational dummies (clerks is set as the omitted variable), 2 sector variables (secondary sector is the omitted category), HH dummy, married dummy, 4 age-band dummies (age group 35-44 is the omitted category), 3 education dummies (graduate level is the omitted category), and public sector dummy. Number of observations: 77,758. Robust estimates of standard error were computed. The standard errors are clustered at year level.*

<sup>i</sup> A similar case to Greece is Spain (see GARCIA-MAINAR and MONTUENGA-GOMEZ, 2003) where large differences exist in regional unemployment structure.

<sup>ii</sup> These countries were; the US, Canada, the UK, Federal Republic of Germany, Austria, Italy, the Netherlands, Ireland, Switzerland, Norway, South Korea and Australia.

<sup>iii</sup> Wage curves have been reported, so far, for Argentina, Australia, Austria, Belarus, Belgium, Brazil, Bulgaria, Burkina Faso, Canada, Chile, China, Czech Republic, Denmark, East Germany, Estonia, Finland, France, Great Britain, Holland, Hungary, India, Ireland, Italy, Japan, Latvia, New Zealand, Norway, Poland, Portugal, Romania, Russia, Slovakia, Slovenia, South Africa, South Korea, Spain,

1  
2  
3  
4  
5  
6  
7  
8  
9  
10  
11  
12  
13  
14  
15  
16  
17  
18  
19  
20  
21  
22  
23  
24  
25  
26  
27  
28  
29  
30  
31  
32  
33  
34  
35  
36  
37  
38  
39  
40  
41  
42  
43  
44  
45  
46  
47  
48  
49  
50  
51  
52  
53  
54  
55  
56  
57  
58  
59  
60

---

Sweden, Switzerland, Taiwan, Turkey, USA, and West Germany (for a summary of the research literature see BLANCHFLOWER and OSWALD, 2005).

<sup>iv</sup> For a description of ESYE' s weighting procedures see EUROSTAT,2006.

<sup>v</sup> The random-effects are not reported in this paper in order to save space. The results on the control variables are available upon request from the author.

<sup>vi</sup> The coefficients on the personal control variables of each regression are not presented in the paper in order to save space. However, the tables can be made available by the author upon request.

For Peer Review Only