

Behaviour in therapeutic medical care: evidence from general practitioners in Austria

Müller, Michael; Meyer, Harald; Stummer, Harald

Postprint / Postprint

Zeitschriftenartikel / journal article

Zur Verfügung gestellt in Kooperation mit / provided in cooperation with:

www.peerproject.eu

Empfohlene Zitierung / Suggested Citation:

Müller, M., Meyer, H., & Stummer, H. (2010). Behaviour in therapeutic medical care: evidence from general practitioners in Austria. *Journal of Public Health*, 19(2), 147-153. <https://doi.org/10.1007/s10389-010-0363-5>

Nutzungsbedingungen:

Dieser Text wird unter dem "PEER Licence Agreement zur Verfügung" gestellt. Nähere Auskünfte zum PEER-Projekt finden Sie hier: <http://www.peerproject.eu> Gewährt wird ein nicht exklusives, nicht übertragbares, persönliches und beschränktes Recht auf Nutzung dieses Dokuments. Dieses Dokument ist ausschließlich für den persönlichen, nicht-kommerziellen Gebrauch bestimmt. Auf sämtlichen Kopien dieses Dokuments müssen alle Urheberrechtshinweise und sonstigen Hinweise auf gesetzlichen Schutz beibehalten werden. Sie dürfen dieses Dokument nicht in irgendeiner Weise abändern, noch dürfen Sie dieses Dokument für öffentliche oder kommerzielle Zwecke vervielfältigen, öffentlich ausstellen, aufführen, vertreiben oder anderweitig nutzen.

Mit der Verwendung dieses Dokuments erkennen Sie die Nutzungsbedingungen an.

gesis
Leibniz-Institut
für Sozialwissenschaften

Terms of use:

This document is made available under the "PEER Licence Agreement". For more information regarding the PEER-project see: <http://www.peerproject.eu> This document is solely intended for your personal, non-commercial use. All of the copies of this documents must retain all copyright information and other information regarding legal protection. You are not allowed to alter this document in any way, to copy it for public or commercial purposes, to exhibit the document in public, to perform, distribute or otherwise use the document in public.

By using this particular document, you accept the above-stated conditions of use.

Mitglied der

Leibniz-Gemeinschaft

Editorial Manager(tm) for Journal of Public Health
Manuscript Draft

Manuscript Number: JOPH-D-10-00034R1

Title: Behaviour in therapeutic medical care - evidence from general practitioners in Austria

Article Type: Original Article

Corresponding Author: Mr. Michael Mueller, Mag.

Corresponding Author's Institution: UMIT, Private Universität für Gesundheitswissenschaften, medizinische Informatik und Technik

First Author: Michael Mueller, Mag.

Order of Authors: Michael Mueller, Mag.; Harald Meyer, Prof. Dr; Harald Stummer, Univ. Prof. Dr

Abstract: Aim The present study examines monetary effects of general practitioners' behaviour in therapeutic medical care to identify sample characteristics that allow differentiating between the individual general practitioner and the basic population.

Subjects and methods Medical services, provided by 3919 general practitioners in Austria, were operationalized by means of the dependent variable "costs per patient". Statistical outliers were identified using Chebyshev's inequality and categorized by investigating bivariate correlations between the dependent variable and the personal characteristics of each physician.

Results Variables that relate to the size of the customer base, such as number of consultations ($r = 0.385$) and office days ($r = 0.376$), correlate positively with the costs for medical services.

By analyzing the portfolio of the general practitioners, we found a correlation of 0.451 between this coefficient and the costs. Statistical outliers feature an average portfolio of 44.5 different services, compared to 30.45 among non-outliers. Especially laboratory services were identified as cost drivers ($r = 0.408$). Statistical outliers generate at least one laboratory parameter for 44.34% of their patients, opposed to 27.2 % within the rest of the sample. Consequently outliers produce higher laboratory costs than their counterparts.

Conclusion We found some evidence that physicians have influence in the provision of their services. Considering entrepreneurial objectives the extension of the portfolio can increase their profit. Our findings indicate supplier-induced demand for several groups of services. We assume that the effect is consolidated by the fee for service system and could be compensated by adequate reform.

Response to Reviewers: I uploaded a sideletter to the reviewer including the list of changes.

Behaviour in therapeutic medical care - evidence from general practitioners in Austria

Michael Müller, Harald Meyer, Harald Stummer

UMIT, Private Universität für Gesundheitswissenschaften, medizinische Informatik
und Technik

Opernring 5/2

A-1010 Wien, Österreich

michael.mueller@umit.at

+436765446929

Behaviour in therapeutic medical care - evidence from general practitioners in Austria

Abstract

Aim The present study examines monetary effects of general practitioners' behaviour in therapeutic medical care to identify sample characteristics that allow differentiating between the individual general practitioner and the basic population.

Subjects and methods Medical services, provided by 3919 general practitioners in Austria, were operationalized by means of the dependent variable "costs per patient". Statistical outliers were identified using Chebyshev's inequality and categorized by investigating bivariate correlations between the dependent variable and the personal characteristics of each physician.

Results Variables that relate to the size of the customer base, such as number of consultations ($r = 0.385$) and office days ($r = 0.376$), correlate positively with the costs for medical services.

By analyzing the portfolio of the general practitioners, we found a correlation of 0.451 between this co-efficient and the costs. Statistical outliers feature an average portfolio of 44.5 different services, compared to 30.45 among non-outliers. Especially laboratory services were identified as cost drivers ($r = 0.408$). Statistical outliers generate at least one laboratory parameter for 44.34% of their patients, opposed to 27.2 % within the rest of the sample. Consequently outliers produce higher laboratory costs than their counterparts.

Conclusion We found some evidence that physicians have influence in the provision of their services. Considering entrepreneurial objectives the extension of the portfolio can increase their profit. Our findings indicate supplier-induced demand for several groups of services. We assume that the effect is consolidated by the fee for service system and could be compensated by adequate reform.

Keywords

general practitioner, supplier-induced demand, therapeutic medical care

Abbreviations

supplier-induced demand (SID), general practitioner (GP), therapeutic medical services (TMS)

Introduction

In primary care, general practitioners (GPs) represent the first point of contact for people with illness issues, who determine the diagnosis and advise their clients regarding the adequate treatment (Statistik Austria 2006; Knox and Britt 2004; Smits et al. 2009). Because of their steering function in the health care system, GPs are often referred to as gatekeepers who regulate and control the demand for medical services (Toon 1994).

They decide whether the service of another colleague or discipline is inevitable or if their portfolio is sufficient enough to induce the recovery of the patient. The personal portfolio can basically be classified into the prescription of pharmaceuticals and the autonomous delivery of medical services, where the latter represents the doctor's income. As e.g. in Germany and Austria outpatient therapeutical medical care is financed by social insurance institutions and therefore consumers rarely control the generated quantities, health economists assume that doctors have the ability to create demand for their services (Peacock and Richardson 2007; Fuchs 1978). This phenomenon is referred to as supplier-induced demand (SID), which implies that the producer of medical services defines the degree of his capacity utilization according to his own preferences - including his salary requirements - without the basic market forces regulating the transaction (Richardson 2001; Freebairn 2001).

The model is based on a study by Evans (1974), who analyzed the financial situation of physicians in outpatient therapeutic medical care under the assumption that the income not only depends on the actual demand for medical services, but also on the providers' preferences. One of the most recognized publications in this field was presented by Fuchs in 1978. He reported direct association between the physician density per capita and the number of therapeutic medical services (TMS) performed. In his sample a 10% rise in surgeon positions increased the demand for surgeries by 3%. In absolute numbers each additional position in the particular region would imply an increase of between 40-60 surgeries per year (Fuchs 1978).

1
2
3
4
5
6
7
8
9
10
11
12
13
14
15
16
17
18
19
20
21
22
23
24
25
26
27
28
29
30
31
32
33
34
35
36
37
38
39
40
41
42
43
44
45
46
47
48
49
50
51
52
53
54
55
56
57
58
59
60
61
62
63
64
65

Other studies since the late 1970s have advanced the theoretical and empirical knowledge of SID, which in the USA is also referred to as physician-induced demand PID (Green 1978; Auster and Oaxaca 1981; Freebairn 2001). Most of the research refers to the fact that the personal income is an important determinant in the physician's utility function and a shift in doctor's advice to more expensive medical treatment can be autonomously induced by the providers.

However, the monetary effect of SID was discussed by Stano, who assumes that SID could only occur in monopolistic markets, since the effect can never compensate for the loss in earnings if the market is saturated (Stano 1987).

There is a controversial debate on the view if SID is a phenomenon of self-interest of the physicians, emphasizing the doctor's role as an agent who has to preserve the patient's interests (Rossiter and Wilensky 1984). In this context the dual capacity of the GPs causes some reason for doubt. On the one hand they represent trusted advisers in health matters of their clients, but on the other hand they operate as entrepreneurs who can benefit from excessive supply (Breyer and Zweifel 2004). This antagonism is enhanced by the information asymmetry between the protagonists, with the less informed patients delegating health care decisions to the doctors. This behaviour remains unproblematic as long as the latter serve as perfect agents, without pursuing opportunistic interests.

Based on the present state of research in the field of SID and under the assumption that physicians who operate in a social health care system have to economize when choosing the adequate treatment for their patients, the main objective of the present study is to analyze the behaviour in outpatient therapeutic medical care.

According to the above-discussed literature, the aim of the present study is to answer the question if *GPs providing excessive medical services can be identified*. It will be evaluated to what extent miscellaneous individual characteristics of physicians have an impact on their behaviour by using the example of Austrian GPs and the medical services they generated during the year of 2008.

Methodology

The present study uses data from an national social insurance institution from 3,919 GPs nationwide in the year 2008. The cooperating institution represents the social insurance company for the self-employed in Austria, with a customer base of 461,301

1 insurants. In Austria approximately 6,400 GPs work in private practice, with 4,367
2 GPs being under contract with the cooperating social insurance institution.¹ The
3 dataset only includes doctors who provide medical attendance during the entire year,
4 excluding those who went out of business or started operations during that period.
5 During the observation period 2,903,820 consultations were conducted that
6 accounted for € 59,477,598.
7

8
9
10 *After the selection of the outliers their personal characteristics are to be detected.*
11 The objectives require the identification of all statistical outliers in the following
12 category, which also represents the dependent variable (DV):
13

14
15
16 **DV = Total expenditure per patient for TMS provided**
17

18 In calculating the outliers, we take into account that there is a strong linear
19 relationship between the costs for medical services and the number of patients
20 treated. The graph which describes the relationship runs through the zero point and
21 has an inclination that represents the proportionality constant. The proportionality
22 constant equates to the average costs per TMS, calculated over the total sample of
23 3,919 GPs.
24

25
26
27
28
29 **b = total costs / total number of patients**
30

31
32
33 With the proportionality constant the estimated costs for each GP are calculated by
34 the formula:
35

36
37 **estimated costs = b * number of patients**
38

39
40 We use the distribution of the deviations of the actual costs per patient from the
41 estimated costs to define a statistical outlier:
42

43
44
45 *An outlier is a physician, whose discrepancy between actual and estimated*
46 *costs for medical services exceeds the 90 % percentile of the distribution of*
47 *the discrepancies of all physicians with the same number of patients.*
48
49
50

51
52
53 To determine the limit that has to be exceeded in order to be identified as an
54 statistical outlier we apply Chebyshev's inequality, which reads as follows (Fisz
55 1971):
56

57
58
59
60
61

¹ Standesmeldung Österr. Ärztekammer, Juni 2010
62

1
2 If X is a random variable X with a second order finite moment $E(X^2) < \infty$, then for
3 every constant $c > 0$ holds: $P(|X| \geq c) \leq E(X^2) / c^2$. In our case X represents the deviation
4 of the actual costs from the estimated costs.
5
6

7
8 +++insert figure 1+++
9

10 **Fig. 1** Chebyshev's inequality

11
12 This inequality has the advantage to be a very conservative method to determine
13 outliers, since it only identifies outliers whose actual costs deviate dramatically from
14 the estimated cost. Moreover no estimation for the special kind of the distribution
15 (e.g. normal distribution) is needed for the calculation, since the method only requires
16 an estimation for the second order finite moment of the distribution, which can be
17 calculated from the empirical data. After determination of the numerical value of $P(|X|$
18 $\geq c)$ the inequality can be resolved to c .
19
20
21
22
23
24
25

26 **Typology of the outliers**

27
28 In the attempt to categorize outliers according to their behaviour in therapeutic
29 medical care we investigate bivariate correlations between the statistical outliers and
30 the following independent variables:
31
32

- 33 a. Regional population
- 34 b. Physician density – number of GPs per community
- 35 c. Gender of the physician
- 36 d. Age of the physician
- 37 e. Dimensions of the medical practice measured by the patient frequency
38 (office days, number of consultations)
- 39 f. Number of medical services
- 40 g. Portfolio of medical services
- 41 h. Quantity of services and costs in the field of laboratory medicine
42
43
44
45
46
47
48
49
50

51
52 These tested variables have no obvious relationship with the health status of the
53 physician's patients.
54
55
56
57
58
59
60
61
62

1
2
3 **Results**
4

5 The primary focus of this study is to evaluate the role of the GP in the demand for
6 medical services by statistically analyzing his behaviour irrespective of the patient's
7 health status. Table 1 presents an overview of the correlation between the relevant
8 variables. The strong correlation between the patient quantity and the costs ($r=.71$)
9 confirms our decision to use the average costs per patient as the dependent variable
10 to identify statistical outliers.
11
12
13
14
15

16
17
18 +++insert table 1+++
19

20 **Table 1** Overview of the relevant variables
21

22
23 Within the sample a total of 437,532 patients were treated, who consulted their GPs
24 2,903,820 times during the year 2008 and received a total number of 6,576,830
25 services, which amounted to € 59,477,598. Based on the numerical value per patient
26 (€ 135.94), the anticipated cost for each physician and the deviation from the actual
27 costs can be calculated. The application of Chebyshev's inequality shows a
28 significant deviation from the estimate in 148 cases. In other words, the treatment
29 expenses of 148 GPs, measured by the deviation of the actual costs per patient from
30 the estimated costs, exceed the rest of the sample significantly. In this subsample of
31 148 statistical outliers the total sum of costs above the estimated costs amounts to €
32 2,238,777.90.
33
34
35
36
37
38
39
40
41
42

43 Now we intend to contain the statistical outliers by explaining their behaviour in
44 therapeutic medical care with criteria or a combination of criteria that are
45 characteristic for the physician.
46
47
48

49
50 We found correlations between the dependent variable (costs per patient) and all
51 variables that relate to the patient frequency (office days, number of consultations).
52 The correlations vary between 0.376 (office days) and 0.385 (consultations). This
53 indicates that the doctor's income is dependent on the size of his customer base and
54 the magnitude of the demand for his services. That assumption is confirmed by the
55
56
57
58
59
60
61
62

1 following findings: Outliers have significantly more office days and a larger number of
2 consultations than subjects that do not exhibit these attributes (Tab. 2).
3
4

5 +++insert table 2+++
6

7 **Table 2** Office Days
8
9

10 +++insert table 3+++
11

12 **Table 3** Consultations
13
14
15

16 The probability that an outlier is identified within group 2 is nine times higher than
17 within the group with less capacity. In this and all following contingency tables “group
18 2” contains the physicians whose value in the independent variable exceeds the
19 upper limit of the so-called 2-sigma-range. Group 1 contains the rest of the sample.
20
21
22
23
24

25 Between the criterion “population” and the dependent variable we found a negative
26 correlation of -0.241, indicating that physicians who produce more quantity are likely
27 to be located in regions with a smaller population. Additionally, we compare
28 physicians from the two biggest municipal regions (Vienna and Graz) with the rest of
29 the sample (Tab 3).
30
31
32
33
34
35

36 +++insert table 4+++
37

38 **Table 4** Population
39
40
41

42 As expected we found significantly more outliers outside the two municipal areas.
43 The probability to identify an outlier in a rural region is twice as high as finding one in
44 a municipal area. In contrast the physician density, which represents a common
45 feature of many SID studies, could not be detected as a variable of relevant influence
46 within the sample.
47
48
49
50

51 When analyzing the quantity of medical services, the data provides evidence for an
52 appreciable correlation between the number of medical services produced by the
53 physician and the costs ($r = 0.425$). The outliers show an average of 2098.39
54 therapeutic services annually, compared to 1131.09 services for the rest of the
55 sample. The dichotomous analysis verifies the results, since the group of physicians
56
57
58
59
60
61
62

1 that produces more quantity contains 7 times more outliers than the other group (Tab
2 4).

3
4
5 +++insert table 5+++
6

7 **Table 5** Number of services
8
9

10 Considering the fee structure for medical services, the findings seem to be trivial,
11 since prices are fixed and basically the quantity regulates the costs. However, we
12 decided to assess the subject more extensively by focusing on the physicians'
13 individual portfolio. In this context we define the GP's portfolio as the range of
14 medical services, measured by the number of different services according to the
15 current fee structure. The correlation between the dependent variable and the
16 criterion "portfolio" is 0.451. The mean comparison indicates that outliers (44.51
17 different services) have a greater portfolio than their peers (30.45 different services).
18 The dichotomous analysis is highly significant and supports the results (Tab 8).
19
20
21
22
23
24
25
26
27
28

29 +++insert table 6+++
30

31 **Table 6** Portfolio
32
33

34 We continued by investigating if a group of services might induce this trend
35 exceptionally and found a positive correlation ($r = 0.408$) between the number of
36 laboratory services and the dependent variable.
37
38

39 On average statistical outliers provide 433.96 laboratory services compared to
40 148.32 services by their peers. The evaluation of the laboratory costs featured a
41 corresponding result (Tab. 6, 7).
42
43
44
45
46

47 +++insert table 7+++
48

49 **Table 7** Number of laboratory services
50
51

52 +++insert table 8+++
53

54 **Table 8** Costs of laboratory services
55
56
57

58 Finally we focused on the criterion "laboratory services" to investigate possible
59 differences between the statistical outliers and non-outliers in this area:
60
61
62

1 The mean value of the annual costs for laboratory services per physician within the
2 group of outliers is € 4,013.46 (standard deviation 3,516) compared to € 1,453,20
3 (standard deviation 1,834.27) with non-outliers. The costs for laboratory services per
4 patient reveal a similar result. In the group of outliers the annual costs per patient
5 average € 90.75 (standard deviation 57.64) compared to € 40.21 (standard deviation
6 34.28) with non outliers.
7
8
9

10
11
12 +++insert table 9+++
13

14 **Table 9** Key data for laboratory services
15

16
17
18 The laboratory quota represents the percentage of patients who receive a laboratory
19 test during the consultation of their GP. Outliers perform at least one or more tests
20 per year for 44.34% (standard deviation 14.13%) of their patients, opposed to
21 27.82% (standard deviation 11.68%) among their counterparts. Since every
22 laboratory parameter contributes to the GP's income we calculated the share of
23 laboratory revenue of the total revenue. The percentage of the physician's income
24 that can be attributed directly to laboratory services is on average 14.24% (standard
25 deviation 9.31%) in the group of outliers and 9.16% (standard deviation 12.08%)
26 amongst other providers.
27
28
29
30
31
32
33
34
35

36 Considering the final two criteria of our study, neither the variable age of the
37 physician nor gender had a significant influence on the costs per patient.
38
39
40
41
42
43
44
45
46
47
48
49
50
51
52
53
54
55
56
57
58
59
60
61
62
63
64
65

Discussion

In Austria, outpatient therapeutic medical care is disbursed on a “fee for service” basis (§ 28 Honorarordnung). With the exception of a few capped positions, the doctor’s income correlates positively with the number of services provided for his clients and consequently with the number of consultations. This type of remuneration system does not use the medical output in terms of “production of health” to determine the net income of the provider. Therefore, an economical and considerate use of the resources is not necessarily required. Through its monetary incentives the modality of payment for medical attendance determines not only the costs of health care but also the effectiveness of the system. In general, effectiveness can be described by the capability of the selected procedure to achieve the objective – in our case the recovery of the patient.

Accordingly, GPs are expected to (Devlin and Sarma 2008; Newhouse 1996):

- supply as many patients as possible with TMS and to be continuously available for their clients
- offer a wide range of medical services to meet the individual requirements of their patients
- establish a personal doctor-patient relationship with all customers without discriminating against high-risk groups

The “fee for service” system meets these requirements (Rice 1997; Devlin and Sarma 2008). Physicians who provide a sizable clientele with a maximum of services are rewarded, sanctioning those who accomplish less quantity (Robinson 2001). Our study supports the assumption that the size of the customer base and the frequency they demand for doctor’s advice is the biggest cost driver in therapeutic medical care. The findings are comprehensible and inherent to the current remuneration system. In this context a few drawbacks of the fee for service approach should be mentioned: Neither the adequacy of the supplied services nor the enhancement of the population’s health status represent criteria for success (Hickson et al. 1987). Also interdisciplinary collaboration between the different groups of health care professionals is not promoted. Most of these shortfalls could be balanced by implementing alternative remuneration mechanisms such as “pay for performance” or “capitation”, which presently are not established in the Austrian health care system (Levaggi and Rochaix 2003).

1 Under the assumption that the behaviour of GPs in therapeutic medical care is also
2 determined by personal requirements of the care provider, the theory of SID
3 becomes a popular research area for health economics. As stated above, to be
4 considered an inducement, the medical services should be of questionable value to
5 the patient and primarily initiated for profit and not medical reasons (Bradford and
6 Martin 1995). Eventually there also is a strong coherence between the system of
7 remuneration for medical services and the likelihood of SID. Physicians who derive
8 their income in a "fee for service" system have a 30% higher probability to initiate
9 further consultations than their peers in "capitation" or "pay for performance" settings
10 (Phelps 1997). The interdependency between SID and health care costs appears to
11 be reasonable, since our current system measures the GP's income in achieved
12 quantities, whereas alternative approaches emphasize the outcome of the medical
13 intervention. Against this background the steering function of the remuneration
14 system becomes apparent.

15
16
17
18
19
20
21
22
23
24
25
26
27
28
29 The results of our study provide some insight into the GP's latitude when providing
30 medical treatment. The tendency that physicians with extensive portfolios frequently
31 exceed the costs indicates the occurrence of SID within the sample. Statistical outliers
32 feature on average 14 more services within their portfolio than physicians with a
33 more economic behaviour. We assume that most of the effect can be attributed to the
34 possibility to provide laboratory services. Considering the average laboratory costs
35 per patient, the identified statistical outliers exceed the rest of the sample by 125%.
36 Also the mean laboratory quota of 44.34% within the outlier group appears to be
37 rather excessive, especially if you consider the GP to be more of a generalist and not
38 necessarily a specialist for laboratory diagnostics. It is highly improbable that the
39 disparities in the magnitude of conducted laboratory services can exclusively be
40 attributed to the health status or active demand on behalf of the patients. Rather the
41 qualification of the physician - and his opportunity to allocate activities - increases the
42 supply. Consequently if a physician is permitted to procure a certain product range,
43 he is capable of providing TMS irrespective of the actual demand.

44
45
46
47
48
49
50
51
52
53
54
55
56 Our findings indicate the existence of SID – not necessarily for the occupational
57 group collectively, not even for the individual GP's full range of services, but more
58 probably for several types of services. It seems appropriate that, especially in the field

1 of laboratory medicine, tests can be generated by the bulk using technical equipment
2 without exceptionally affecting the scarce time resources of the physician.
3 Considering the entrepreneurial objectives in a fee for service system, the expansion
4 of the portfolio of TMS seems to be a common method to increase profit (Carrin and
5 Van Dael 1984). The effect is however consolidated by the prevailing system of
6 remuneration and could be absorbed by adequate reform. Reflecting the opening
7 statement about the GP's core competences and his particular importance to the
8 health care system, alternative forms of payment that inhibit SID by compensating
9 the GP ad valorem are inevitable.
10
11
12
13
14
15
16
17

18 The following limitations of this study should be mentioned:

19 The behaviour of the GPs was analyzed based on the available data. Since only the
20 billing data of the national health insurance was accessible, the diagnoses of the
21 patients and the form of therapy could not be evaluated. Therefore the study was
22 conducted without consideration of the clients' health status. Another critical point is
23 the absent comprehensive survey reflecting on the interdependency between the
24 medical services and the pharmaceuticals prescribed by the physicians. We assume
25 that these factors are mutually dependent and would like to focus on that assumption
26 in a follow-up study.
27
28
29
30
31
32
33
34
35
36

37 ***Conflict of interest***

38 The authors declare that they have no conflict of interest.
39
40
41

42 ***Acknowledgments***

43 The authors would like to express their appreciation to the SVA der gewerblichen
44 Wirtschaft for providing us with the data used in the study.
45
46
47
48
49
50
51
52
53
54
55
56
57
58
59
60
61
62
63
64
65

Reference list

- 1
2
3 Auster RD, Oaxaca RL (1981) Identification of supplier induced demand in the health
4 care sector. *J Hum Resour* 16(3):327-342
5
6
7 Bradford WD, Martin RE (1995) Supplier-induced demand and quality competition:
8 An empirical investigation. *Eastern Econ J* 21(4):491-504
9
10 Breyer F, Zweifel P, Kifmann M (2004) *Gesundheitsökonomik*. 5th edn. Springer,
11 Berlin pp 331-351
12
13
14 Britt H, Knox SA (2004) The contribution of demographic and morbidity factors to
15 self-reported visit frequency of patients: A cross-sectional study of general practice
16 patients in Australia. *BMC Fam Pract* 2004 5:17. doi: 10.1186/1471-2296-5-17
17
18 Carrin G, Van Dael J (1984) An empirical model of the demand for health care in
19 Belgium. *Appl Econ* 16(3):317-335
20
21
22
23 Delvin RA, Sarma S (2008) Do physician remuneration schemes matter? The case of
24 canadian family physicians. *J Health Econ* 27(5):1168-1181. doi:
25 10.1016/j.jhealeco.2008.05.006
26
27
28 Evans RG (1974) Supplier induced demand: Some empirical evidence and
29 implications. In: Pearlman M (ed) *The economics of health and medical care*, 1st edn.
30 Mcmillan, London, pp 162-173
31
32
33
34 Fisz M (1971) *Wahrscheinlichkeitsrechnung und mathematische Statistik*. 1st edn.
35 Berlin, VEB Deutscher Verlag der Wissenschaften
36
37
38 Freebairn J (2001) Evaluation of the supplier-induced demand for medical care
39 model. *Australian Econ Rev* 34(3):353-355
40
41
42 Fuchs V (1978) The supply of surgeons and the demand for operations. *J Hum*
43 *Resour* 13:35-56
44
45
46 Green J (1978) Physician-induced demand for medical care. *J Hum Resour* 13:21-34
47
48 Hickson G, Altemeier W, Perrin JM (1987) Physician reimbursement by salary or fee
49 for service. Effect on physician practice behaviour in a randomized prospective study.
50 *Pediatrics* 80(3):344-350
51
52 Honorarordnung für Ärzte für Allgemeinmedizin und Fachärzte. § 28
53
54 Levaggi R, Rochaix L (2003) Optimal payment schemes for physicians. *Portuguese*
55 *Econ J* 2(2):87-107
56
57
58 Newhouse JP (1996) Reimbursing health plans and health providers: Efficiency in
59 production versus selection. *J Econ Lit* 34(3):1236-1264
60
61
62
63
64
65

1 Peacock SJ, Richardson JR (2007) Supplier-induced demand: Re-examining
2 identification and misspecification in cross-sectional analysis. *Eur J Health Econ*
3 8(3):267-277. doi: 10.1007/s10198-007-0044-7
4
5 Phelps C (1997) *Health Economics*. 2ndedn. Addison-Wesley Reading,
6 Massachusetts
7
8 Rice T (1997) Physician payment policies: Impacts and implications. *Annu Rev*
9 *Public Health* 18(1):549-565
10
11 Richardson J (2001) Supply and demand for medical care: Or, is the health care
12 market perverse? *Aust Econ Rev* 34(3):336-352
13
14 Robinson JC (2001) Theory and practice in the design of physician payment
15 incentives. *Milbank Q* 79(2):149-177
16
17 Rossiter LF, Wilensky GR (1984) Identification of physician induced demand. *J Hum*
18 *Resour* 19(2):231-244
19
20 Standesmeldung Österreichische Ärztekammer Juni 2010. Österreichische
21 Ärztezeitung 13/14, Juli 2010: 42
22
23 Smits FTM, Brouwer HJ, ter Riet G, Van Weert HCP (2009) Epidemiology of frequent
24 attenders: A 3-year historic cohort study comparing attendance, morbidity and
25 prescriptions of one-year and persistent frequent attenders. *BMC Public Health* 2009
26 9:1-7. doi: 10.1186/1471-2458-9-36
27
28 Stano M (1987) A clarification of theories and evidence on supplier-inducement
29 demand for physicians' services. *J Hum Resour* 22(4):611-620
30
31 Statistik Austria: Österreichische Gesundheitsbefragung 2006/07, Hauptergebnisse
32 und methodische Dokumentation.
33
34 Toon PD (1994) Justice for gatekeepers. *Lancet* 343(8897):585-587
35
36
37
38
39
40
41
42
43
44
45
46
47
48
49
50
51
52
53
54
55
56
57
58
59
60
61
62
63
64
65

	patient quantity	office days	consultations	medical services quantity	medical services costs	laboratory services costs
patient quantity		.61	.86	.79	.71	.50
office days	.61		.72	.69	.61	.43
consultations	.86	.72		.95	.84	.65
medical services quantity	.79	.69	.95		.86	.81
medical services costs	.71	.61	.84	.86		.66
laboratory services costs	.50	.43	.65	.81	.66	

Table 1 Overview of the relevant variables

	non outliers	outliers	total
group 1	3732	130	3862
group 2	39	18	57
total	3771	148	3919
chi square	123.04		
mean	175.63	209.92	

Table 2 Office Days

	non-outliers	outliers	total
group 1	3636	127	3763
group 2	135	21	156
total	3771	148	3919
chi square	41.94		
mean	536.54	882.22	

Table 3 Consultations

	non-outliers	outliers	total		non-outliers	outliers	total
Vienna	631	12	643	Vienna/Graz	770	15	765
rest	3410	136	3276	rest	3021	133	3154
total	3771	148	0	total	3771	148	3919
chi square	Jul 72			chi square	Aug 62		

Table 4 Population

	non-outliers	outliers	total
group 1	3633	110	3743
group 2	138	38	176
total	3771	148	3919
chi square	160.93		
mean	1131.09	2098.39	

Table 5 Number of services

	non-outliers	outliers	total
group 1	3668	130	3798
group 2	103	18	121
total	3771	148	3919
chi square	42.33		
mean	30.45	44.51	

Table 6 Portfolio

	non-outliers	outliers	total
group 1	3633	110	3743
group 2	138	38	176
total	3771	148	3919
chi square	160.93		
mean	148.32	433.96	

Table 7 Number of laboratory services

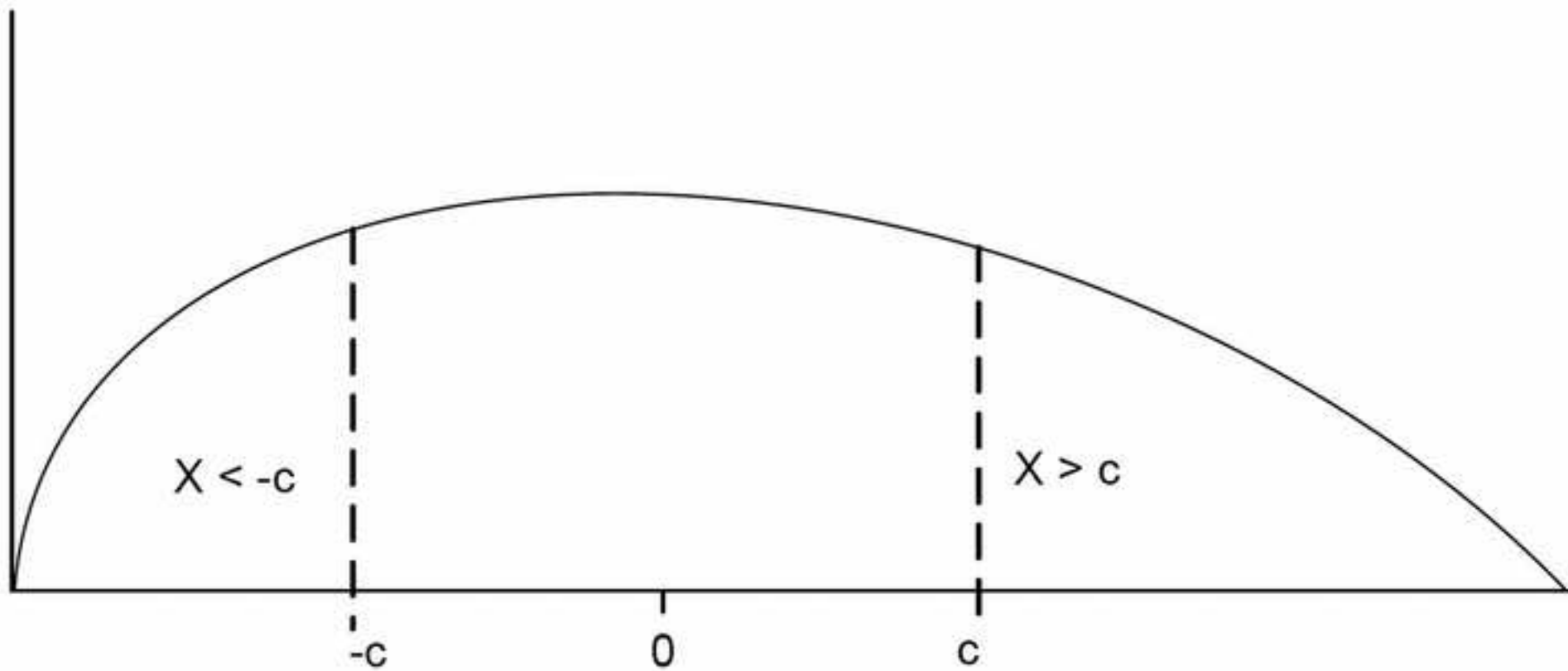
	non-outliers	outliers	total
group 1	3629	110	3739
group 2	142	38	180
total	3771	148	3919
chi square	156.01		
mean	827.43	2434.46	

Table 8 Costs of laboratory services

	outliers		non outliers	
	mean	standard deviation	mean	standard deviation
total laboratory costs	4,013.46	3,516.00	1,453.20	1,834.27
total laboratory services	707.53	602.47	259.87	325.56
laboratory costs per patient	90.75	57.64	40.21	34.28
laboratory quota	44.34%	14.13%	27.82%	11.68%
income quota	14.24%	9.31%	9.16%	12.08%

Table 9 Key data for laboratory services

Figure 1
[Click here to download high resolution image](#)



List of changes

1. *Abstract: Should be shorter and focused on main contents/messages (150-250 words)*
 - Revision p.1: The number of words was reduced from 362 to 247
2. *Question: From the context of the manuscript it is not comprehensible if the number 3919 general practitioners is to be covered to Austria in total*
 - Revision p.3 last break: The present study uses data from an Austrian national health insurance institution from 3919 GPs nationwide in the year 2008. In Austria approximately 6400 GPs work in private practice, with 4367 GPs being under contract with the social insurance institution. Physicians who did not provide services for the cooperating social insurance institution during the entire year of 2008 were excluded from the sample.
3. Page 2 (Introduction), l.3: In Germany, medical services are predominantly paid by social insurance institutions but there are other resources like private health insurances and others. In fact, remuneration by private health insurances constitutes a very important source of income for GPs.
 - Author's comment: The study does not include privately financed services of GPs. Within the group of GPs, who are under contract of a social insurance company, the vast majority of services are financed by the social insurance institutions. To some extent legal restrictions even prohibit this group of physicians to invoice private bills. In contrast within the group of GPs who are not under contract of a social insurance institution (Wahlärzte) all medical services are paid on the patient's own account – and only if the patient files the invoice to his social insurance company, they reimburse 80% of the costs. However this group of GPs is not included in the sample. The financing of GP services through private insurance institutions is not a common method of remuneration on the Austrian market, since they predominantly focus on financing hospital services.
4. Page 3, l.53: Maybe better: "It will be evaluated to what extent..."
 - Revision p.3: was adopted in the text
5. Page 4, l.12/13: Sentence "According to the above-questioned literature, the aim..." fits better on page 3 between l.51 and 52/53
 - Revision p.3: was adopted in the text
6. Question: Page 4, l.2: What kind of health insurance institution cooperated with you in order to conduct the study? In Germany, different health insurances exist with more or less different groups of insured people (differ for instance in age, socio-economic status, chronic diseases...)
 - Revision p.3/4: The cooperating institution represents the social insurance company for the self-employed, with a customer base of 461,301 insurants.
7. Acknowledgment
 - Revision p. 12: The authors would like to express their appreciation to the SVA der gewerblichen Wirtschaft for providing us with the data used in the study.