

An analysis of new firm survival using a hazard function

Holmes, Phil; Hunt, Andrew John; Stone, Ian

Postprint / Postprint

Zeitschriftenartikel / journal article

Zur Verfügung gestellt in Kooperation mit / provided in cooperation with:

www.peerproject.eu

Empfohlene Zitierung / Suggested Citation:

Holmes, P., Hunt, A. J., & Stone, I. (2009). An analysis of new firm survival using a hazard function. *Applied Economics*, 42(2), 185-195. <https://doi.org/10.1080/00036840701579234>

Nutzungsbedingungen:

Dieser Text wird unter dem "PEER Licence Agreement zur Verfügung" gestellt. Nähere Auskünfte zum PEER-Projekt finden Sie hier: <http://www.peerproject.eu> Gewährt wird ein nicht exklusives, nicht übertragbares, persönliches und beschränktes Recht auf Nutzung dieses Dokuments. Dieses Dokument ist ausschließlich für den persönlichen, nicht-kommerziellen Gebrauch bestimmt. Auf sämtlichen Kopien dieses Dokuments müssen alle Urheberrechtshinweise und sonstigen Hinweise auf gesetzlichen Schutz beibehalten werden. Sie dürfen dieses Dokument nicht in irgendeiner Weise abändern, noch dürfen Sie dieses Dokument für öffentliche oder kommerzielle Zwecke vervielfältigen, öffentlich ausstellen, aufführen, vertreiben oder anderweitig nutzen.

Mit der Verwendung dieses Dokuments erkennen Sie die Nutzungsbedingungen an.

gesis
Leibniz-Institut
für Sozialwissenschaften

Terms of use:

This document is made available under the "PEER Licence Agreement". For more information regarding the PEER-project see: <http://www.peerproject.eu> This document is solely intended for your personal, non-commercial use. All of the copies of this documents must retain all copyright information and other information regarding legal protection. You are not allowed to alter this document in any way, to copy it for public or commercial purposes, to exhibit the document in public, to perform, distribute or otherwise use the document in public.

By using this particular document, you accept the above-stated conditions of use.

Mitglied der

Leibniz-Gemeinschaft



AN ANALYSIS OF NEW FIRM SURVIVAL USING A HAZARD FUNCTION.

Journal:	<i>Applied Economics</i>
Manuscript ID:	APE-06-0367.R1
Journal Selection:	Applied Economics
Date Submitted by the Author:	29-Jun-2007
Complete List of Authors:	Holmes, Phil; University of Durham, School of Economics, Finance and Business Hunt, Andrew; University of Durham, School of Economics, Finance and Business Stone, Ian; University of Durham, School of Economics, Finance and Business
JEL Code:	C41 - Duration Analysis & C4 - Econometric and Statistical Methods: Special Topics & C - Mathematical and Quantitative Methods, L10 - General & L1 - Market Structure, Firm Strategy, and Market Performance & L - Industrial Organization
Keywords:	new firm survival, hazard models, micro-enterprises



1
2
3
4
5
6
7
8
9
10
11
12
13
14
15
16
17
18
19
20
21
22
23
24
25
26
27
28
29
30
31
32
33
34
35
36
37
38
39
40
41
42
43
44
45
46
47
48
49
50
51
52
53
54
55
56
57
58
59
60

AN ANALYSIS OF NEW FIRM SURVIVAL USING A HAZARD FUNCTION

by

Phil Holmes, Andrew Hunt and Ian Stone

Abstract

A unique dataset is used to provide a detailed examination of the survival of newly-established manufacturing firms in north-east England. Using data on 781 firms established between 1973 and 2001, log-logistic hazard models are estimated separately for (i) micro-enterprises and (ii) small and medium establishments (SMEs). Both micro-enterprises and SMEs show clear evidence of positive duration dependence, followed by negative duration dependence. We find the two firm types are differentially affected by firm-specific and macroeconomic variables. Increases in initial plant size impact negatively on micro-enterprise survival and positively on SME survival.

Keywords: new firm survival, hazard models, micro-enterprises.

JEL classification: C41, L10.

Running title: Hazard estimations of new firm survival.

Corresponding author: Andrew Hunt, School of Economics, Finance and Business. University of Durham, Mill Hill Lane, Durham, DH1 3HY, UNITED KINGDOM, Tel: 0191 334 5424, Fax: 0191 334 5201.

Phil Holmes and Ian Stone are Professors and Andrew Hunt is a Research Associate in the School of Economics, Finance and Business at the University of Durham

I. INTRODUCTION

In the UK since the early 1980s the birth of new firms has been seen as a major means by which unemployment might be constrained or reduced. As such, a panoply of government initiatives designed to promote small firm start-ups and (to a lesser extent) growth has been introduced (for a discussion of some of the key policies see Storey (1990)). Implicit in these policies has been the assumption that, once established, firms continue to make a contribution to the economy. While firm entry is clearly of importance, arguably *duration* can be considered to be of greater significance in terms of meeting long-term policy objectives related to employment and the growth of the economy. The current concern to develop policies to help improve the rates of business succession (when the owner wishes to exit) reflects this concern (Stone, *et al.* 2004). Over the past two decades considerable work has been undertaken on the post-entry performance of new firms (see, for example, Mata and Portugal (2002), Arrighetti and Vivarelli (1999), Audretsch and Mahmood (1995), and Mata and Portugal (1994))¹. However, while much attention has been given to factors affecting the birth and death of firms in the UK, and to the duration of firm

¹ In addition to these studies there have been others examining post-entry performance and new firm entry, see, for example, Agarwal (1998), Audretsch (1995), Audretsch and Mahmood (1994), Audretsch, Santarelli and Vivarelli (1999), Dunne, Roberts and Samuelson (1988), Fotopoulos and Louri (2000) Geroski (1991), Mahmood (2000), Pérez, Llopis and Llopis (2004), Persson (2004), Segarra and Callejón (2002) and the special edition of the *International Journal of Industrial Organisation*, edited by Mata and Audretsch (1995).

1
2
3 survival in other countries, to date there has been a paucity of work directly
4
5 investigating new firm duration in the UK².
6
7
8
9

10
11 Furthermore, in examining the firm duration issue, all previous studies have
12
13 undertaken analysis for new firms as a group. This may have resulted in some of
14
15 the underlying relationships being masked. Therefore, in this study, the approach
16
17 taken is to use sub-samples based on the characteristics that the literature
18
19 suggests may be relevant to survival, for example, local vs. non-local ownership
20
21 and micro as opposed to larger sized firms (SMEs). Interestingly, the result to
22
23 emerge is that there are considerable differences between the factors affecting
24
25 the survival of micro-enterprises and those affecting small and medium
26
27
28
29
30

31 ² Dunne and Hughes (1992) examine firm survival for UK companies and Reid (1991) analyses
32
33 factors helping small entrepreneurial firms to stay in business using a sample of firms in Scotland,
34
35 but in neither paper is a longitudinal dataset available and both use a sample which does not relate
36
37 specifically to new firms. In contrast, Taylor (1999) investigates the duration of self-employment
38
39 spells in Britain using the British Household Panel Survey. However, this involves an analysis of
40
41 duration at the level of the individual, rather than the firm. Thus the current work can be viewed
42
43 as being complementary to Taylor's study. McCloughan and Stone (1998) examine survival in the
44
45 context of the UK, but their work relates to foreign multinational subsidiaries and uses a much
46
47 smaller sample than is used in the current study. In a comprehensive study, Disney *et al* (2003)
48
49 examine entry, exit and survival of UK manufacturing firms. However, this study only relates to
50
51 establishments with 100 or more employees, does not relate specifically to new firms and
52
53 examines a relatively short time period (1986–1991) compared to the current study. Li and
54
55 Hamblin (2003) investigate the effects of manufacturing performance on the survival of UK
56
57 manufacturing companies' using a relatively small sample of 156 UK wide observations,
58
59 collected during the 1980s and 1997.
60

1
2
3 establishments (SMEs)^{3,4}. In the light of this, previous studies may well have
4
5
6 resulted in inappropriate policy conclusions being drawn.
7
8
9

10
11 This shortage of work on the UK is due primarily to the lack of suitable available
12
13 datasets to investigate the issue. As Mata and Audretsch note, “in order to
14
15 analyze the post-entry performance of firms, a large longitudinal database to track
16
17 firms subsequent to their entry is needed.” (1995, p416). To date, such a
18
19 database has not been available for the UK. The current study utilises a unique,
20
21 relatively large, database relating to manufacturing firms established in the
22
23 Wearside area of England over the twenty-nine year period 1973-2001 compiled,
24
25 over time, by one of the authors. This has been augmented with additional data
26
27 from the Office of National Statistics. By using this dataset, augmented by other
28
29 data, together with the hazard rate approach, we are able to analyse firm duration
30
31 over a long period (1973-2002), and to identify the impact of firm-specific,
32
33 industry-specific and macroeconomic variables on firm survival. In addition,
34
35 given the size of the database used, we are able to analyse separately the factors
36
37 determining the survival of (i) micro-enterprises and (ii) SMEs. Given that there
38
39
40
41
42
43
44

45
46 ³ We define micro-enterprises as establishments with total employment at the start-up date of nine
47
48 or less and SMEs as establishments with total employment at the start-up date of ten or more. It
49
50 should be noted that some of the establishments we term SMEs are not SMEs in the traditional
51
52 sense as they are plants of larger enterprises located elsewhere (see section II below for further
53
54 discussion). However, for convenience we use the terms firm, enterprise and establishment
55
56 interchangeably in relation to the sample analysed.

57
58 ⁴ It is, of course, the case that a number of studies analyse the impact of firm or plant size on
59
60 duration by including size as an independent variable (see, for example, Audretsch and Mahmood
(1995), McCloughan and Stone (1998), Disney *et al.* (2003) and Li and Hamblin (2003)).

1
2
3 are strong economic grounds for believing that these two types of enterprise will
4
5 be affected differently by different variables, it is desirable to model their
6
7 survival separately. As such, this paper makes an important contribution to our
8
9 understanding of the post-entry performance of newly-established manufacturing
10
11 firms in a UK region and provides important implications for government policy
12
13 designed to promote the survival of new small firms.
14
15
16
17
18
19

20 While the sample used here relates to one sub-region of the UK only,
21
22 nonetheless, the results have wider relevance. Industrial performance at either the
23
24 national or regional level is crucially affected by the ability of newly-established
25
26 firms and plants to survive and grow. New firms are one means by which a
27
28 manufacturing economy adjusts its specialisation over time towards more
29
30 competitive products and they are an important counterbalance to contraction and
31
32 closure. Similarly, the renewal process can be achieved by the establishment (on
33
34 green or brownfield sites) of new plants by externally-owned companies. The
35
36 extent to which the new units thrive and develop impacts upon the components of
37
38 change and thus the stock of producers over time⁵. Understanding the dynamics
39
40 of growth at the regional level has attracted increasing attention over recent years.
41
42 This attention has tended to focus upon the drivers of start-up and in-movement,
43
44 reflected in the fact that during the study period support was especially generous
45
46 at the start-up and in-movement phase. This, typically nationally-operated,
47
48 support may be expected to reduce the death rates of firms in their first few years
49
50
51
52
53
54
55
56
57

58
59 ⁵ A regional illustration of the dynamic process relating to foreign direct investment is given in
60 Stone and Peck (1996).

1
2
3 of existence. After this stage fewer support measures could be drawn upon
4
5 which, combined with the perils known to accompany attempts at growth, would
6
7 be consistent with rising death rates. After decades of nationally-operated
8
9 policies relating to industry⁶, the UK has decentralised policy formulation and
10
11 delivery through the network of Regional Development Agencies. Identifying the
12
13 factors that influence firm survival within an area that is typical of peripheral UK
14
15 regions is thus a topic of considerable practical relevance.
16
17
18
19
20
21

22
23 To summarise the results, we find that there are considerable differences in the
24
25 factors affecting the survival of micro-enterprises and SMEs. In particular, it is
26
27 shown that initial plant size has a negative impact on the survival of micro-
28
29 enterprises, but a positive impact on the survival of SMEs, while initial
30
31 ownership status is not of importance for survival of either enterprise type. It is
32
33 also shown that both types of enterprises are characterised by positive duration
34
35 dependence, consistent with the tailing-off of early years assistance and the risks
36
37 of early years growth, followed by negative duration dependence. This calls into
38
39 question the results of previous studies that have utilised hazard functions which
40
41
42
43
44
45

46
47 ⁶ For example, Wearside had Assisted Area Status for much of the period under review, thus
48
49 qualifying for the maximum level of central government investment grants for plant and
50
51 machinery. Additional assistance took forms such as low cost loans (e.g. from the European Coal
52
53 and Steel Community). Some supplementary regionally/locally administered support was also
54
55 available such as rent concessions via bodies such as the Washington New Town Corporation and
56
57 the Tyne and Wear Development Corporation. For a discussion of the frameworks for business
58
59 support in the earlier part of our sample period see Stone and Stevens (1986), for the latter part of
60
the period see Bank of England (1994-2001) and Deakins and Freel (2006).

1
2
3 assume duration dependence to be monotonically increasing or decreasing (e.g.
4 the Weibull distribution).
5
6
7
8
9

10 The remainder of the paper is organised as follows: section II discusses
11 methodological issues and the empirical design used in this study. In section III
12 we set out the relationships to be examined in this paper between firm survival
13 and economic variables. Results are presented and discussed in section IV and
14 section V provides a summary and concluding remarks.
15
16
17
18
19
20
21

22 **II. METHODOLOGICAL ISSUES AND EMPIRICAL DESIGN**

23
24
25 In order to investigate factors affecting firm survival, it is necessary to examine
26 data concerning the duration of the life of a firm. A major problem encountered
27 when analysing duration data is that of censored data. In this study censored data
28 refers to those firms which were still alive at the time when the data was last
29 updated. To overcome the problems caused by censored data it is necessary to
30 consider not only whether a firm will cease trading, but also the length of time
31 the firm trades. This can be achieved by using a hazard rate approach. The
32 hazard rate model of the duration of the life of a firm provides a statistical
33 representation of the relation between the survival time of a firm and certain
34 explanatory variables. The model is a natural one for working with data which
35 has a longitudinal element, as it provides a method for dealing with censored
36 data. The hazard rate approach involves modelling the conditional probability
37 that a firm will cease trading over a specified period. The hazard rate can be
38 thought of as the rate at which firms die after duration t , given that they are alive
39 at least until time t .
40
41
42
43
44
45
46
47
48
49
50
51
52
53
54
55
56
57
58
59
60

1
2
3
4
5
6 An important concept in considering the hazard function is duration dependence.
7
8 If the hazard function for a particular distribution slopes upwards (downwards),
9
10 then the distribution has positive (negative) duration dependence. Positive
11
12 (negative) duration dependence implies that the likelihood of failure at time t ,
13
14 conditional on duration up to t , is increasing (decreasing) in t . Different
15
16 parametric specifications of the hazard function display different duration
17
18 dependence behaviour. Four widely used distributions in economics are the
19
20 exponential which displays constant duration dependence, the Weibull for which
21
22 the hazard function is monotonically increasing or decreasing (depending on the
23
24 value of the relevant parameter), the log-normal and the log-logistic which can
25
26 both display increasing duration dependence initially, followed by decreasing
27
28 duration dependence. It is also possible that the log-logistic distribution will
29
30 display only negative duration dependence. Which behaviour is displayed
31
32 depends upon the estimated value of the shape parameter. *A priori* it is not
33
34 obvious which distribution is most appropriate. In this study all four
35
36 distributions were used and the log-logistic was chosen on the basis of the log-
37
38 likelihood values. The results presented in the following section are based on
39
40 this distribution⁷. With the log-logistic distribution the hazard function is given
41
42 by:
43
44
45
46
47
48
49
50

$$\lambda(t) = \lambda\rho(\lambda t)^{\rho-1} / [1 + (\lambda t)^\rho] \quad (1)$$

51
52
53
54
55
56
57 ⁷ In addition, the Cox proportional hazard model was also utilised. The general pattern of results
58
59 was similar across all specifications. Results from the other specifications are available on
60
request.

1
2
3 where $\lambda(t)$ is the hazard function and ρ is a shape parameter. If $\rho > 1$ then there is
4
5 positive duration dependence followed by negative duration dependence. If $\rho = 1$
6
7 then there is monotonic negative duration dependence. Explanatory variables (or
8
9 ‘covariates’) can be included in the model by letting λ be a function of a set of
10
11 regressors:
12
13
14

$$15 \lambda_i = e^{-\beta' x_i} \quad (2)$$

16
17 where x_i are variables which affect survival and the parameters are given by β .
18
19 Thus, the model is formulated in terms of the effects of explanatory variables on
20
21 the probability of the firm dying, the hazard function. The sign of the estimated
22
23 coefficients indicates the direction of the effect of the variable on the hazard
24
25 function, with a negative coefficient implying shorter durations (increased
26
27 probability of death) and a positive coefficient longer durations.
28
29
30
31
32
33
34
35

36 Previous studies of the survival of new firms have been constrained by the
37
38 paucity of available data. In order to undertake detailed analysis of duration, it is
39
40 necessary to have a sample of firms that is sufficiently large, covers a relatively
41
42 long time period and is complete in terms of the timing of both births and deaths.
43
44 In addition, in order to examine the impact of macroeconomic variables on firm
45
46 survival, it is desirable for the sample to include firms with different start dates.
47
48 The main database used in this study comprises a unique sample of 781
49
50 manufacturing firms in Wearside, North East England that were newly-
51
52 established over the period 1973-2001⁸. Of the 781 firms, 318 (40.7%) were
53
54
55
56
57

58
59 ⁸ The vast majority of these newly-established firms consist of entirely new start-ups within the
60 boundary of Wearside. A small number of the newly-established firms consist of recently formed

1
2
3 still in business ('alive') in 2002 (the end of the sample period), while 463
4 (59.3%) had ceased trading ('dead'). Table 1 provides a summary of the number
5
6 of firms splitting the sample into five year sub-periods by date of establishment
7
8 (with the exception of the first period which is eight years). It also provides a
9
10 breakdown by sub-period of those that were alive in 2002, and hence represent
11
12 truncated observations. Two important empirical issues need to be discussed.
13
14
15 First, there is a potential problem caused by heterogeneity of the data. For
16
17 example, included within the sample are externally-owned sub-units of larger
18
19 enterprises, while others are completely new start-ups. While this heterogeneity
20
21 of the sample is potentially problematic, it is mitigated by sub-dividing the
22
23 sample into micro-enterprises and SMEs and by the use of plant size and
24
25 ownership status as independent variables. In addition, the construction of the
26
27 sample has ensured that it does not contain 'dead ducks' (very short-life firms
28
29 that by their nature have extremely little chance of survival)⁹. Second, it is
30
31 obvious from Table 1 that there was a large influx of firms in the period 1981-85,
32
33 with many of these firms subsequently exiting. This raises the question of
34
35 whether there is a cohort effect affecting this group of entrants. However, it
36
37 should be noted that the failure rate for this group of firms is much lower than
38
39
40
41
42
43
44
45
46

47
48 local firms re-locating from outside the boundary for purposes (typically) of procuring more
49
50 suitable premises; the remainder consist of externally-owned companies establishing new
51
52 production facilities in the area via greenfield investment or by taking over facilities vacated by a
53
54 firm which has gone into liquidation or moved out of the area.
55

56
57 ⁹ New entrants have been identified using a variety of sources (e.g. local authority and private
58
59 sector industrial property lists, industrial directories, etc.), verified by either telephone or postal
60

1
2
3 that of the firms established earlier (although obviously the latter group have had
4 a longer time in which to fail) and similar to that for that group of firms
5 established in the latter half of the 1980s. More importantly, differences in
6 cohorts through time are taken into account by the inclusion of industry-specific
7 and macroeconomic independent variables.
8
9
10
11
12
13
14
15
16
17

18 TABLE 1 HERE
19

20
21
22
23 The database allows the identification for each firm of the date of establishment,
24 the date of closure (if dead), the initial ownership status of the firm (foreign, UK
25 or local), plant size (as measured by the number of employees within the first two
26 years of trading), the 4-digit standard industrial classification (SIC 1992) code for
27 the firm, the total grants received (adjusted to 1990 prices) over the life of the
28 firm to 2002, and the location within the Wearside area (Washington New Town,
29 the former coalfield zone of Houghton, Inner Sunderland, Outer Sunderland).
30 This database information was augmented by data on macroeconomic and
31 industry-specific variables. In particular, use was made of data on average
32 annual short- and long-term real interest rates, average annual effective exchange
33 rates, annual sectoral growth rates, annual sectoral employment growth rates,
34 annual average sectoral wage rates, annual sectoral growth value-added in the
35 UK, annual unemployment rate in the (Northern) Region and the UK, and the 3-
36
37
38
39
40
41
42
43
44
45
46
47
48
49
50
51
52
53
54
55
56
57

58 contact at a later date. The data-gathering process is such that very short-life firms (i.e. those
59 existing for just a few months) were excluded from the database.
60

1
2
3 digit five-firm concentration ratio at the year of establishment¹⁰. It is argued that
4
5
6 by utilising company-specific, industry-specific and macroeconomic variables
7
8 data, it should be possible to identify the main factors affecting firm survival.
9

10
11
12
13 In estimating the hazard models, the data set is divided into two sub-samples on
14
15 the basis of plant size at the establishment date. Models are estimated separately
16
17 for those firms with total employment at the date of establishment of nine or less
18
19 (micro-enterprises) and those with total employment of ten or more at the date of
20
21 establishment (SMEs). Within the original dataset were a small number of
22
23 'larger' enterprises with over 100 employees at establishment, these were
24
25 excluded on the grounds that their sizes were atypical and there is no reliable
26
27 method to ascertain if these enterprises were drawn from the same population as
28
29 the rest of the SME cohort¹¹. This sub-division of the sample into micro and
30
31 SME is undertaken to reflect the fact that the variables determining duration are
32
33 likely to differ between micro-enterprises and SMEs¹². While it might have been
34
35 desirable to further sub-divide the SME group, this was not possible due to the
36
37
38
39
40
41
42
43

44
45 ¹⁰ Details of the data used in the final estimations and the sources are provided in the Appendix at
46
47 the end of the paper.
48

49
50 ¹¹ The definitions used here are broadly consistent with those of the European Commission, which
51
52 defines micro-enterprises as having between 0 and 9 employees and SMEs as having 10 - 499
53
54 employees.
55

56
57 ¹² In the results reported below this is found to be the case. Indeed, when estimations were
58
59 undertaken for the entire sample (micro-enterprises and SMEs together), a number of variables
60
found to be significant below, were found to be insignificant, highlighting the importance of
differentiating between the two types of firms.

1
2
3 sample size. The sub-division resulted in a sample of 549 for micro-enterprise
4
5 firms (of which 41% were alive in 2002) and 232 SMEs (39% alive in 2002).
6
7
8
9

10 11 12 13 **III. RELATIONSHIP BETWEEN FIRM SURVIVAL AND ECONOMIC** 14 15 **VARIABLES** 16

17
18 The choice of covariates to be included in the analysis has been determined by
19
20 prior expectations based on theory and previous empirical studies. As indicated
21
22 above, it is expected that there will be three broad groups of variables which will
23
24 have a possible impact on firm survival; firm-specific, industry-specific and
25
26 macroeconomic. The first firm-specific variable to be considered is the initial
27
28 ownership status of the firm and, in particular, whether the firm is locally-owned,
29
30 UK-owned or foreign-owned. Our prior expectation is that foreign-owned firms
31
32 are likely to survive longer than the other types, due to the financial backing
33
34 which is likely to be provided by a foreign-owned parent setting up a new
35
36 establishment in the UK. We expect this relationship to be stronger for SMEs
37
38 than for micro-enterprises, since setting up a new establishment with ten or more
39
40 employees indicates a greater level of commitment on the part of the foreign
41
42 parent.
43
44
45
46
47
48
49

50
51
52 Many previous studies have suggested that there is a positive relationship
53
54 between plant size and survival (see, for example, Audretsch and Mahmood
55
56 (1995), McCloughan and Stone (1998), Disney *et al.* (2003), Perez *et al.* (2004)
57
58 and Persson (2005)). The main explanation put forward for this relationship
59
60 relates to the view that larger firms are more likely to have levels of output close

1
2
3 to the minimum efficient scale (MES), *ceteris paribus*, and thus smaller firms
4
5 have an inherent size disadvantage. While this may be true for SMEs, it is
6
7 questionable whether this is the case for micro-enterprises. For very small firms,
8
9 increases in size may have little impact in terms of moving towards the MES, but
10
11 may well lead to extra burdens in terms of having to generate revenue to maintain
12
13 the firm. As such, the expected relationship between the duration of micro-
14
15 enterprises and plant size is negative. Finally, a positive relationship is expected
16
17 between the level of grants provided to firms and firm survival. Clearly, grants
18
19 provide a financial cushion which either lower set-up costs or reduce running
20
21 costs.
22
23
24
25
26
27
28
29

30 Industry-specific variables have been widely examined in previous work in this
31
32 area. The degree of competition is expected to have an impact on firm survival,
33
34 with the concentration ratio being used as a proxy in several studies. The general
35
36 argument put forward is that increased concentration in the industry will make
37
38 the environment more difficult for new entrants, leading to greater risk of failure.
39
40 However, while McCloughan and Stone (1998) and Baldwin and Rafiquzzaman
41
42 (1995) find a significant relationship between concentration and firm duration,
43
44 Wagner (1994) finds no such relationship for German manufacturing. Wagner,
45
46 arguing along the lines of Geroski (1991), suggests that local conditions, in
47
48 particular, market niches, are more likely to be important to small entrants and,
49
50 thus, suggests that there may well be no significant relationship between
51
52 concentration and survival. Thus, previous literature is divided on the role of
53
54 concentration in the survival of new firms. Examination of this role here will
55
56 provide further insight into this issue.
57
58
59
60

1
2
3
4
5
6 There are a number of sectoral variables which may be expected to impact on
7
8 firm duration. Sectoral output growth rates and growth in sectoral value-added
9
10 are both expected to have a positive impact on survival, since increases in these
11
12 variables are expected to be associated with expanded market opportunities¹³. In
13
14 contrast sectoral wage rate increases may be expected to have a negative impact
15
16 on survival, because such an increase is associated with rising costs. Finally,
17
18 there may well be differences in survival rates between different industries over
19
20 and above those captured by the other industry-specific variables, as some
21
22 industries decline, while others expand (see for example, McCloughan and Stone
23
24 (1998), Taylor (1999), and Li and Hamblin (2003)). For this reason, industry
25
26 dummy variables are included in the analysis.
27
28
29
30
31
32
33
34

35 Let us now consider macroeconomic variables. The unemployment rate is
36
37 expected to be negatively related to survival for two reasons. First,
38
39 unemployment can be considered to be a proxy for demand, with higher
40
41 unemployment being associated with lower demand. Second, it is possible that
42
43 high unemployment leads to an increase in the number of *start-ups*, particularly
44
45 for very small firms. In this case setting up a firm may be seen as an alternative
46
47 to employment and may be a choice of last resort. Clearly, if this is the case, then
48
49 we might again expect higher unemployment in the first year of operation to lead
50
51 to a greater chance of the firm dying, given that many of the start-ups are
52
53
54
55
56

57
58 ¹³ In practice, such variables are highly correlated, since they are measuring very similar activity.

59
60 As a result they are not included jointly in the analysis which follows. The final estimation reports results for those that were found to be the most important empirically.

1
2
3 undertaken by people less well suited or with fewer skills appropriate to running
4 a business.
5
6
7
8
9

10 Audretsch and Mahmood (1995) argue that the real interest rate may be
11 positively related to the likelihood of failure, with higher borrowing costs placing
12 an additional financial burden upon the enterprise. However, their results do not
13 support this view. They argue that their findings may be due to the fact that most
14 new firms do not rely on external capital. It is, of course, possible that there may
15 be differences in terms of how micro enterprises and SMEs respond to changes in
16 interest rates. By analysing this issue we provide further insights into the impact
17 of this variable. The exchange rate variable which has been excluded from many
18 previous studies could well be important for survival, particularly for firms that
19 are more likely to face competition from abroad and to be involved with imports
20 and exports. In general, it is to be expected that increases in the real effective
21 exchange rate will have an adverse affect on firm survival, since such a change
22 implies a worsening of the competitive position relative to overseas competitors.
23 Clearly then, there are strong grounds for believing that firm-specific, industry-
24 specific and macroeconomic variables may impact on firm survival. Furthermore,
25 it is to be expected that such variables will impact differentially on micro-
26 enterprises and SMEs. We now proceed to investigate these relationships.
27
28
29
30
31
32
33
34
35
36
37
38
39
40
41
42
43
44
45
46
47
48
49
50
51
52
53

54 **IV. RESULTS**

55
56 Table 2 shows the results of the final versions of the model that were estimated
57 for micro-enterprises and SMEs. The columns in Table 2 relate respectively to
58 micro-enterprises and SMEs. A number of variables discussed in the previous
59
60

1
2
3 section were not included in the final estimations, since they were found to be
4 insignificant in relation to both samples. All other variables are significant to at
5 least the 10% level, in the majority of cases the significance is 5% or higher. As
6 can be seen from Table 2, the final specification demonstrates that firm-specific,
7 industry-specific and macroeconomic variables have an impact on the survival of
8 newly-established firms. Furthermore, it is evident from the results presented
9 that there are substantial differences in the factors determining the survival of
10 micro-enterprises compared with that of SMEs.
11
12
13
14
15
16
17
18
19
20
21

22
23
24
25
26
27
28
29
30
31
32
33
34
35
36
37
38
39
40
41
42
43
44
45
46
47
48
49
50
51
52
53
54
55
56
57
58
59
60

TABLE 2 HERE

Before considering the variables and how they impact on firm survival, it is instructive to examine the estimated hazard functions and to note the estimated value of ρ , the shape parameter, in each estimation. Figures 1a and 2a show the final estimated hazard functions for micro-enterprises and SMEs respectively. For both types of firms the figures show clear evidence of positive duration dependence, followed by negative duration dependence. This is borne out by examining the estimated value of ρ in Table 2, which is shown to be approximately equal to 1.6 for both micro-enterprises and SMEs. This is statistically in excess of 1 and confirms that there is evidence of positive duration dependence followed by negative duration dependence¹⁴. The nature of duration dependence has received little attention in previous studies. This is surprising

¹⁴ The standard errors reported in Table 2 imply 95% confidence intervals of 1.4264 to 1.7694 for micro-enterprises and 1.3825 to 1.8525 for SMEs.

1
2
3 given that it has important implications for policies designed to assist firm
4 survival (for a notable exception see Mahmood (2000), who also reports that new
5 firm hazard rates follow an inverted U pattern). The analysis here suggests that
6 for both micro-enterprises and SMEs there is an increased likelihood of death in
7 each subsequent period during the early years of establishment, but that there is
8 then a turning point such that firms which survive beyond this point are then less
9 likely to die in each subsequent period. The precise turning point, tp , can be
10 determined using the following:
11
12
13
14
15
16
17
18
19
20
21

$$22 \quad tp = \left[\frac{(\rho-1)}{\lambda^\rho} \right]^{1/\rho} \quad (3)$$

23
24
25
26
27
28
29
30
31 Using the estimated values of λ and ρ , the turning point for micro-enterprises is
32 found to be 8.94, while that for SMEs is 7.89. Thus, it appears that negative
33 duration dependence takes roughly a year longer to achieve for micro-enterprises
34 than for SMEs. Nonetheless, for both firm types the period before negative
35 duration dependence is relatively long. This suggests that policies designed to
36 assist firm survival should not – as is typically the case – concentrate only on the
37 first few years of a firm’s existence. Figures 1a and 2a show the estimated
38 conditional hazard functions for the two enterprise types. These present the
39 probabilities of death at point t conditional upon the firm surviving to the
40 previous point in time. It can be seen that while the turning point for micro
41 enterprises is later than for SMEs, the conditional probability of failure for micro
42 enterprises is always lower than for SMEs. This lower probability of early death
43 for micro-enterprises is also revealed by the estimated survival functions (Figures
44
45
46
47
48
49
50
51
52
53
54
55
56
57
58
59
60

1
2
3 1b and 2b) which show that the approximate proportions of micro-enterprises and
4
5 SMEs surviving after 10 years are 60% and 50% respectively.
6
7
8
9

10
11 FIGURE 1A HERE

12
13 FIGURE 1B HERE

14
15 FIGURE 2A HERE

16
17
18 FIGURE 2B HERE
19

20
21
22
23 Let us now consider the impact on duration of firm-specific variables. The
24
25 results in relation to plant size are of considerable interest, particularly given that
26
27 this has been a variable that has received much attention in the literature. The
28
29 results presented here for SMEs are consistent with previous studies in that they
30
31 provide evidence of a positive relationship between plant size and firm survival.
32
33
34 In contrast, very small firms (those with total employment of 9 or less) are less
35
36 likely to survive as start-up plant size increases. The findings offer strong
37
38 evidence of differences in duration behaviour for the two sub-groups of firms.
39
40
41 There thus appears to be a threshold level below which increased plant size is a
42
43 burden on firms, suggesting that previous studies, which aggregated micro-
44
45 enterprises with SMEs may have overlooked an important issue.
46
47
48
49
50

51
52 For both micro-enterprises and SMEs the initial ownership status of the firm was
53
54 not found to have a significant impact on survival,¹⁵ this is consistent with the
55
56

57
58
59 ¹⁵ With respect to micro-enterprises the results are, perhaps, not surprising, given that only 6%
60 were UK owned and that just 2% were initially under foreign ownership.

1
2
3 results of Matta and Portugal (2002) who compared Portuguese domestic and
4 foreign firms. They found that, after controlling for a limited number of firm and
5 industry characteristics, there were no significant differences in the failure
6 probabilities of the two firm types. Interestingly, our results suggest that foreign
7 owned plants are more likely to survive, but, that this is due to their relatively
8 larger size at establishment rather than their ownership status¹⁶.
9
10
11
12
13
14
15
16
17
18
19

20 It is clearly possible that the difference in results between micro-enterprises and
21 SMEs is reflecting differences in ownership, rather than size at establishment. To
22 investigate this, and to test the robustness of the results presented in Table 2, two
23 additional regressions were estimated. These equations were estimated using
24 only local observations, hence removing the issue of interactions between size
25 and ownership, and are reported in Table 3¹⁷. Within this local sub-sample the
26 same size effects are observed as in the entire sample, namely a negative
27 relationship between size at establishment and survival for micro-enterprises and
28 a positive one for SMEs¹⁸. The other parameter estimates within these
29 regressions also exhibit identically signed coefficients to those within Table 2,
30
31
32
33
34
35
36
37
38
39
40
41
42
43
44

45 ¹⁶ This stands in contrast to the results of Gorg and Strobl (2003) who suggest that multinational
46 plants are more ‘footloose’ than locally owned plants *after* controlling for plant- and industry-
47 specific characteristics.
48
49

50
51
52 ¹⁷ Equivalent estimations were not feasible for non-local enterprises due to an insufficient number
53 of observations.
54

55
56 ¹⁸ It should be noted that the size effect for SMEs was significant at only the 14% level. This may
57 be due to the lack of ‘large’ SMEs within the local sub sample. The average size of the local
58 SME was 21 employees, this compares to 31 for a UK owned SME and 38 for a foreign owned
59 SME.
60

1
2
3 with the exception of the change in exchange rate variable (which also relates to
4 a different period in this second set of regressions) and also some differences in
5 the industry dummies which are thought to reflect the make-up of plants by
6 industry within the sub-sample.
7
8
9
10
11

12
13
14
15
16
17
18
19
20
21
22
23
24
25
26
27
28
29
30
31
32
33
34
35
36
37
38
39
40
41
42
43
44
45
46
47
48
49
50
51
52
53
54
55
56
57
58
59
60

TABLE 3 HERE

Returning to the main results in Table 2, there was no evidence that the provision of grants to newly-established firms has an impact on either firm type. Finally, in relation to firm-specific variables, it is worth noting that the specific location within the Wearside sub-region did not impact on firm duration¹⁹. This may appear at first sight to be somewhat surprising given the contrasting characteristics of Sunderland and Washington. The former has, over the period of analysis, shed a very substantial number of jobs and faced severe problems following the decline of traditional industries. In contrast Washington, as a new town, not only had a Development Corporation during some of the period analysed, but also benefited from better transport links and other infrastructure advantages. While old industries²⁰ based in Sunderland were adversely affected during the 1970s and 1980s, the results suggest that there was not a significantly higher failure rate among newly-established manufacturing firms in Sunderland compared to their counterparts in other areas. This could be due, in part, to the

¹⁹ In the interests of brevity, the results for the estimations including the location dummies are not reported. Inclusion of these dummies did not change the overall pattern of results. Results available on request.

²⁰ Established prior to our sample.

1
2
3 fact that at the same time as the old industries were in decline in Sunderland,
4
5 there was substantial investment in improving its infrastructure from the early
6
7 1980s, in particular via the activities of the Tyne & Wear Urban Development
8
9 Corporation.
10
11

12
13
14
15 To summarise thus far: it is clear that, as far as firm-specific variables are
16
17 concerned increased plant size has a negative impact on the survival of micro-
18
19 enterprises, but a positive impact on the survival of SMEs. Ownership variables,
20
21 location and the receipt of grants do not have a significant influence on survival
22
23 chances.
24
25
26

27
28
29
30 Turning to industry-specific factors, the sectoral growth rate, over the first three
31
32 years after establishment of operations, was found to be of importance. The
33
34 coefficient is of the expected sign, in that higher sectoral growth in the first few
35
36 years of operations is associated with longer survival. This was found to be
37
38 highly significant for both enterprise types, broadly in line with the findings, for
39
40 the USA, of Audretsch and Mahmood (1995). It is particularly noteworthy that
41
42 the coefficients for the concentration ratio were not significant. While some
43
44 previous studies have found the concentration ratio at the date of establishment to
45
46 be significant, the results presented here are consistent with those for German
47
48 manufacturing presented in Wagner (1994). As Wagner argues, economy-wide
49
50 industry-specific indicators are unlikely to be a good proxy for influences of
51
52 competition and ‘the lack of explanatory power of industry characteristics in the
53
54 survival models is not surprising at all’. (1994, p147).
55
56
57
58
59
60

1
2
3 The industry dummy variables clearly show that there are some significant
4 differences across industries. For SMEs there is clear evidence of a negative
5 effect associated with the textile industry and a positive effect in the rubber and
6 plastics industry. For micro-enterprises there is a negative effect in the furniture
7 industry and a positive effect in the miscellaneous manufacturing sector. Thus, in
8 relation to industry-specific variables, there is clear evidence of differences
9 across industries, but little relating to other industry-specific influences on firm
10 survival.
11
12
13
14
15
16
17
18
19
20
21

22
23
24
25 Finally, we turn to macroeconomic variables. Three interest rate variables were
26 included in the final estimations: the real short-term interest rate in the year in
27 which the firm was established, the change in the short-term interest rate from the
28 first to second year and the change in the real interest rate from the second to
29 third year²¹. The real interest rate at establishment was significant for both micro
30 firms and SMEs. While the micro-enterprise coefficient has the expected
31 negative sign, the effect is positive for SMEs. There are various possible
32 explanations for this: (1) higher interest rates are typically associated with times
33 of high aggregate demand, and this positive effect is dominating the negative
34 interest rate effect; (2) it is conceivable that this coefficient is picking up a
35 screening effect, where more marginal SMEs are less likely to be established
36 when interest rates are high due to higher opportunity costs of capital and credit
37 rationing effects; hence high interest rates (at start-up) creates a cohort of SMEs
38
39
40
41
42
43
44
45
46
47
48
49
50
51
52
53
54
55

56
57
58 ²¹ Long-term interest rates were also included, but were found to have an insignificant impact. In
59 addition, changes in the real short-term interest rate in other years were also examined, but also
60 found to have no significant effect.

1
2
3 with lower than otherwise probabilities of failure. Changes in the interest rate
4 from the first to second and second to third year were found to be significant for
5 micro-enterprises. Again the interest rate effects had the anticipated sign. The
6 difference between the impact on micro-enterprises and SMEs is in line with
7 expectations. Thus the results presented here suggest that low and stable interest
8 rates are important in helping micro-enterprises to survive. The final variables
9 found to be significant relate to changes in the exchange rate. However, this is
10 only significant for micro-enterprises. The change in the real effective exchange
11 rate, from the second to the third year was found to be significant and to have the
12 expected sign. The unemployment rate, either that for the region, or the UK as a
13 whole, was found to be an insignificant variable for both enterprise types²². To
14 summarise: macroeconomic variables do have an impact on both enterprise types,
15 but the effects are more complex for micro-enterprises than for SMEs.
16
17
18
19
20
21
22
23
24
25
26
27
28
29
30
31
32
33
34
35
36
37
38
39
40
41
42
43
44
45
46
47
48
49
50
51

37 V. CONCLUSION

38 This paper has analysed firm survival for newly-established firms in the North-
39 East region of England, using a unique data set of 781 firms. This study is
40 distinguished from previous work in that it estimates hazard functions separately
41 for micro-enterprises and SMEs. This division of the data was undertaken
42 because there are strong grounds for believing that economic factors will impact
43
44
45
46
47
48
49
50
51

52 ²² In addition, the model was estimated including a range of time-related variables to account for
53 possible structural breaks or changes not taken into account by the time varying macroeconomic
54 variables. Specifically, linear and quadratic time trends were included, as were a number of time
55 related dummy variables. All such variables were insignificant and the results were qualitatively
56 very similar to those reported in the tables. Results available on request.
57
58
59
60

1
2
3 differentially on the two firm types. The distinction between the two types of
4 firms is found to be important, with variables having a substantially differential
5 impact on micro-enterprises and SMEs. Further, the results presented here
6 demonstrate that firm-specific, macroeconomic and industry-specific variables
7 have important implications for firm survival.
8
9
10
11
12
13
14
15
16
17

18 In line with prior expectations, increases in initial plant size are seen to have a
19 positive impact on the survival of SMEs. However, increases in plant size were
20 found to impact negatively on micro-enterprise durations. In contrast to the
21 findings of some research, ownership of the enterprise was not identified as a
22 significant firm-specific variable. Our results suggest that the longer survival
23 durations associated with foreign ownership are a function of larger sizes at
24 establishment rather than ownership *per se*.
25
26
27
28
29
30
31
32
33
34
35
36

37 As far as macroeconomic variables are concerned, higher rates of unemployment
38 were not associated with survival chances. This finding would appear to be
39 incompatible with the view that micro-enterprises are often set up as an
40 alternative of last resort for individuals facing unemployment. The key
41 macroeconomic variables that emerged from the study were interest rates and
42 exchange rates. For micro-enterprises, low interest rates at establishment
43 enhance firm survival, while beyond the first year of operation, increases in the
44 real interest and exchange rates impact negatively on their survival probabilities.
45
46
47
48
49
50
51
52
53
54
55
56
57
58

59 Both micro-enterprises and SMEs exhibited clear evidence of initial positive
60 duration dependence, followed by negative duration dependence - enterprises

1
2
3 displayed increased probabilities of death for the first eight to nine years. These
4 findings are particularly interesting in the context of current debates in the UK
5 concerning support for small firms. First of all, they suggest that policies to
6 assist survival should concentrate on more than just the first few years. After all,
7 the probability of death rises for almost the first decade of operations. Secondly,
8 there is the possibility that encouraging the rapid expansion of micro-enterprises
9 as a mechanism for economic growth and development, may inadvertently
10 increase the probability of failure for these business.
11
12
13
14
15
16
17
18
19
20
21
22
23
24
25
26
27
28
29
30
31
32
33
34
35
36
37
38
39
40
41
42
43
44
45
46
47
48
49
50
51
52
53
54
55
56
57
58
59
60

1
2
3 The authors are grateful to Tony Antoniou, Peter Johnson, Simon Parker, Martin
4
5 Robson, David Storey, Colin Wren and an anonymous referee for helpful
6
7 comments on earlier drafts. The authors are particularly grateful to Paul
8
9 Braidford for extensive help with the data for this paper. The usual disclaimer
10
11 applies
12
13
14
15
16
17
18
19
20
21
22
23
24
25
26
27
28
29
30
31
32
33
34
35
36
37
38
39
40
41
42
43
44
45
46
47
48
49
50
51
52
53
54
55
56
57
58
59
60

For Peer Review

References

- 1
2
3
4
5
6 Agarwal, R. (1998). 'Small firm survival and technological activity', *Small*
7
8 *Business Economic,s* 11, pp. 215-24
9
- 10
11 Arrighetti, A. and Vivarelli, M. (1999). 'The rôle of innovation in the postentry
12
13 performance of new small firms: Evidence from Italy', *Southern Economic*
14
15 *Journal*, 65, pp. 927-39
16
17
- 18
19 Audretsch, D.B. (1995). 'The propensity to exit and innovation', *Review of*
20
21 *Industrial Organization*, 10, pp. 589-605
22
23
- 24
25 Audretsch, D.B. and Mahmood, T. (1994). 'Firm selection and industry
26
27 evolution: The post-entry performance of new firms', *Journal of Evolutionary*
28
29 *Economics*, 4, pp. 243-60
30
31
- 32
33 Audretsch, D.B. and Mahmood, T. (1995). 'New-firm survival: New results
34
35 using a hazard function', *Review of Economics and Statistics*, 77, pp. 97-103
36
37
- 38
39 Audretsch, D.B., Santarelli, E. and Vivarelli, M. (1999). 'Start-up size and
40
41 industrial dynamics: some evidence from Italian manufacturing', *International*
42
43 *Journal of Industrial Organization*, 17, pp. 965-83
44
- 45
46 Baldwin, J.R. and Rafiquzzaman, M. (1995). 'Selection versus evolutionary
47
48 adaptation: Learning and post-entry performance', *International Journal of*
49
50 *Industrial Organization*, 13, pp. 501-22
51
52
- 53
54 Bank of England (1994-2001) *Finance for Small Firms*, Nos. 1 to 8, Bank of
55
56 England, London, UK
57
- 58
59 Deakins, D. and Freel, M. (2006) *Entrepreneurship and Small Firms*, 4th Edition,
60
McGrawHill, Maidenhead, UK

- 1
2
3 Disney, R., Haskel, J. and Heden, Y. (2003). 'Entry, Exit and Establishment
4 Survival in UK Manufacturing', *Journal of Industrial Economics*, 51, pp. 91-
5
6 122.
7
8
9
10
11 Dunne, P. and Hughes, A. (1992). 'Age, size, growth and survival: UK
12 companies in the 1980s', *Journal of Industrial Economics*, 42, pp. 115-40
13
14
15
16
17 Dunne, T., Roberts, M.J. and Samuelson, L. (1988). 'Patterns of firm entry and
18 exit in US manufacturing industries', *Rand Journal of Economics*, 104, pp.
19
20 671-98
21
22
23
24 Fotopoulos, G. and Louri, H. (2000) 'Location and Survival of New Entry',
25
26
27 *Small Business Economics*, 14, pp. 311-21
28
29
30 Gorg, H. and Strobl, E. (2003) 'Multinational Companies, Technology Spillovers
31 and Plant Survival' *The Scandinavian Journal of Economics*, 105, pp. 581-95
32
33
34 Geroski, P.A. (1991). *Market Dynamics and Entry*, Blackwell, Oxford
35
36
37
38 Li, X. and Hamblin, D. J. (2003) 'The Impact of Performance and Practice
39 Factors on UK Manufacturing Companies' Survival' *International Journal of*
40
41 *Production Research*, 41, pp. 963-79
42
43
44
45 Mahmood, T. (2000) 'Survival of Newly Founded Businesses: A Log-Logistic
46 Model Approach' *Small Business Economics*, 14, pp. 223-37
47
48
49
50 Mata, J. and Audretsch, D.B. (eds.) (1995). 'The Post-Entry Performance of
51 Firms', special issue of *International Journal of Industrial Organization*, 13,
52
53 pp. 413-614
54
55
56
57
58 Mata, J. and Portugal, P. (1994). 'Life duration of new firms', *Journal of*
59
60 *Industrial Economics*, 42, pp. 227-45

- 1
2
3
4
5
6
7
8
9
10
11
12
13
14
15
16
17
18
19
20
21
22
23
24
25
26
27
28
29
30
31
32
33
34
35
36
37
38
39
40
41
42
43
44
45
46
47
48
49
50
51
52
53
54
55
56
57
58
59
60
- Mata, J. and Portugal, P. (2002). 'The Survival of New Domestic and Foreign Firms', *Strategic Management Journal*, 23, pp. 323-43
- McCloughan, P. and Stone, I. (1998). 'Life duration of foreign multinational subsidiaries: Evidence from UK northern manufacturing industry 1970-93', *International Journal of Industrial Organization*, 16, pp. 719-48
- Perez, S. E., Llopis, A. S. and Llopis, J. A. S. (2004) 'Determinants of Survival of Spanish Manufacturing Firms' *Review of Industrial Organization*, 25, pp. 251-73
- Person, H. (2004) 'The Survival and Growth of New Establishments in Sweden, 1987-1995' *Small Business Economics*, 23, pp. 423-40
- Reid, G.C. (1991). 'Staying in Business', *International Journal of Industrial Organization*, 9, pp. 545-56
- Segarra, A. and Callejon, M. (2002) 'New Firms' Survival and Market Turbulence: New Evidence from Spain' *Review of Industrial Organisation*, 20, pp. 1-14
- Stone, I. and Peck, F. (1996). 'The foreign-owned manufacturing sector in UK peripheral regions, 1978-1993: restructuring and comparative performance', *Regional Studies*, 30, pp. 55-68
- Stone, I., Braidford, P. and Allinson, G. (2004) 'Small Business Succession: An International Literature Review', Annex to Small Business Service, *Passing the Baton – Encouraging Successful Business Transfers*. Department of Trade and Industry, HMSO London
- Stone, I. and Stevens, I. (1986) 'Small Firms and Employment Potential on Wearside' Report for the EEC/Sunderland Borough Council

1
2
3 Storey, D.J. (1990). 'Evaluation of policies and measures to create local
4 employment', *Urban Studies* 27, pp. 669-84
5
6
7

8
9 Taylor, M.P. (1999). 'Survival of the Fittest? An Analysis of Self-Employment
10 Duration in Britain', *Economic Journal* 109, pp.140-55
11
12

13
14 Wagner, J. (1994). 'The post-entry performance of new small firms in German
15 manufacturing industries', *Journal of Industrial Economics* 42, pp. 141-54
16
17
18
19
20
21
22
23
24
25
26
27
28
29
30
31
32
33
34
35
36
37
38
39
40
41
42
43
44
45
46
47
48
49
50
51
52
53
54
55
56
57
58
59
60

For Peer Review

Table 1: Number of firms established by start-up date and status in 2002

Sub period	Number of firms established	Status in 2002	
		Number alive	% Alive (Truncated)
1973-80	236	55	23.3
1981-85	299	125	41.8
1986-90	131	58	44.3
1991-95	70	37	52.9
1996-2001	45	43	95.6
Total	781	318	40.7

For Peer Review

Table 2: Log-logistic hazard model estimates of the determinants of firm survival for micro-enterprises and SMEs

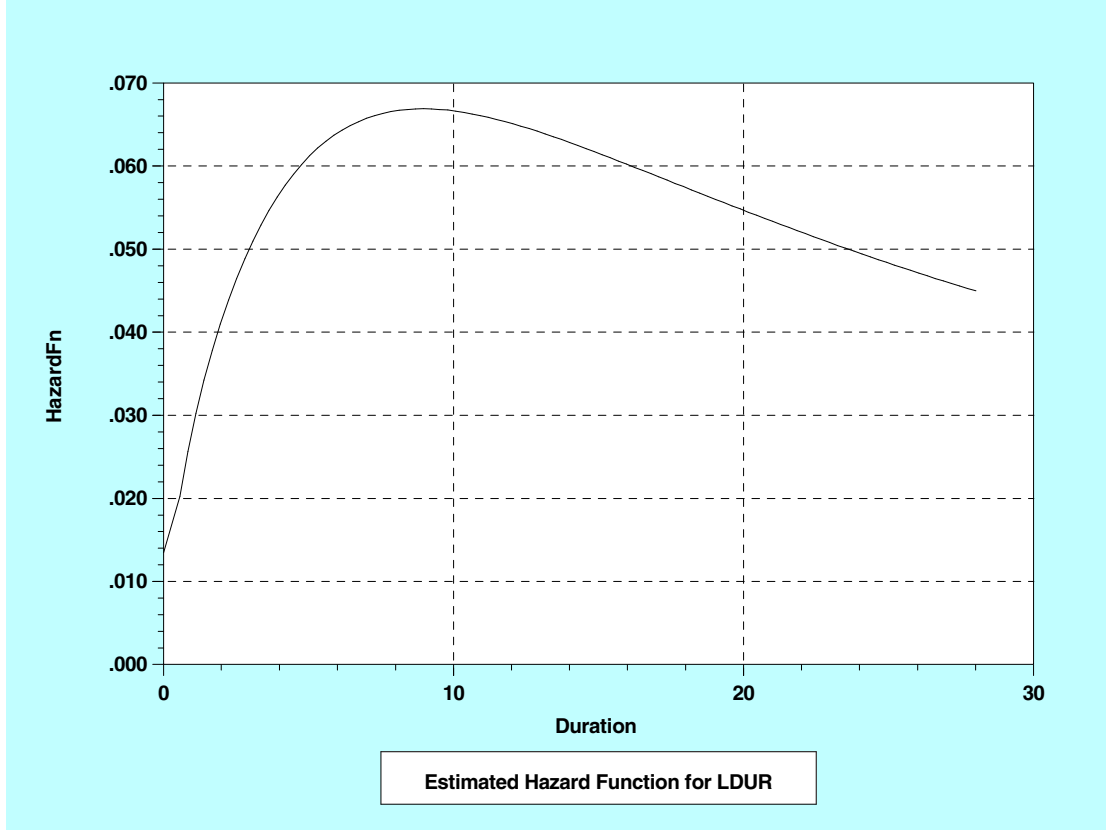
Variable	Micro-enterprises	SMEs
Constant	2.8391 ***0.1234	2.0621 ***0.1439
Firms specific variables:		
Plant Size	-0.0670 ***0.0240	0.0166 ***0.00577
Macroeconomic variables:		
Real interest rate - year 1	-0.0405 **0.0185	0.0395 **0.0184
Change in real interest rate – first year to second year	-0.0308 *0.0170	
Change in real interest rate – second year to third year	-0.0323 **0.0166	
Change in exchange rate– second year to third year	0.0154 **0.00739	
Industry specific variables:		
Sectoral growth rate - years 1 to 3	1.4746 ***0.4689	1.9422 ***0.7182
Manufacture of wearing apparel		-1.4565 ***0.2294
Manufacture of rubber and plastic products		1.0958 ***0.4156
Manufacture of machinery and equipment not elsewhere classified	0.4171 ***0.1476	
Manufacture of furniture	-0.3805 ***0.1300	
Sigma	0.6258 ***0.0343	0.6182 ***0.0458
Number of observations	547	232
ρ	1.5979	1.6175
(se)	0.0875	0.1199
λ	0.0811	0.0953
(se)	0.00404	0.0079
Log-likelihood	-637.0381	-262.2127

Table 3: Log-logistic hazard model estimates of the determinants of locally owned firm survival for micro-enterprises and SMEs

Variable	Local Micro- enterprises	Local SMEs
Constant	2.7900 ***0.0252	2.2034 ***0.0152
Firms specific variables:		
Plant Size	-0.0678 ***0.0252	0.0106 0.00713
Macroeconomic variables:		
Real interest rate - year 1	-0.0461 **0.0204	0.0475 *0.0248
Change in real interest rate – first year to second year	-0.0447 **0.0195	
Change in real interest rate – second year to third year	-0.0323 *0.0179	
Change in exchange rate– first year to second year	-0.0135 **0.00651	
Industry specific variables:		
Sectoral growth rate - years 1 to 3	1.0268 **0.5300	1.8033 **0.8034
Manufacture of wearing apparel		-0.6918 ***0.3853
Manufacture of rubber and plastic products	0.4438 **0.2136	
Manufacture of machinery and equipment not elsewhere classified	0.3764 **0.1589	
Manufacture of furniture	-0.3725 ***0.1342	
Manufacture of fabricated metal products		-1.4606 ***0.2557
Sigma	0.6309 ***0.0363	0.5758 ***0.0485
Number of observations	502	160
ρ	1.5849	0.1165
(se)	0.0913	0.0105
λ	0.0805	1.7366
(se)	0.0042	0.1463
Log-likelihood	-584.7601	-183.5980

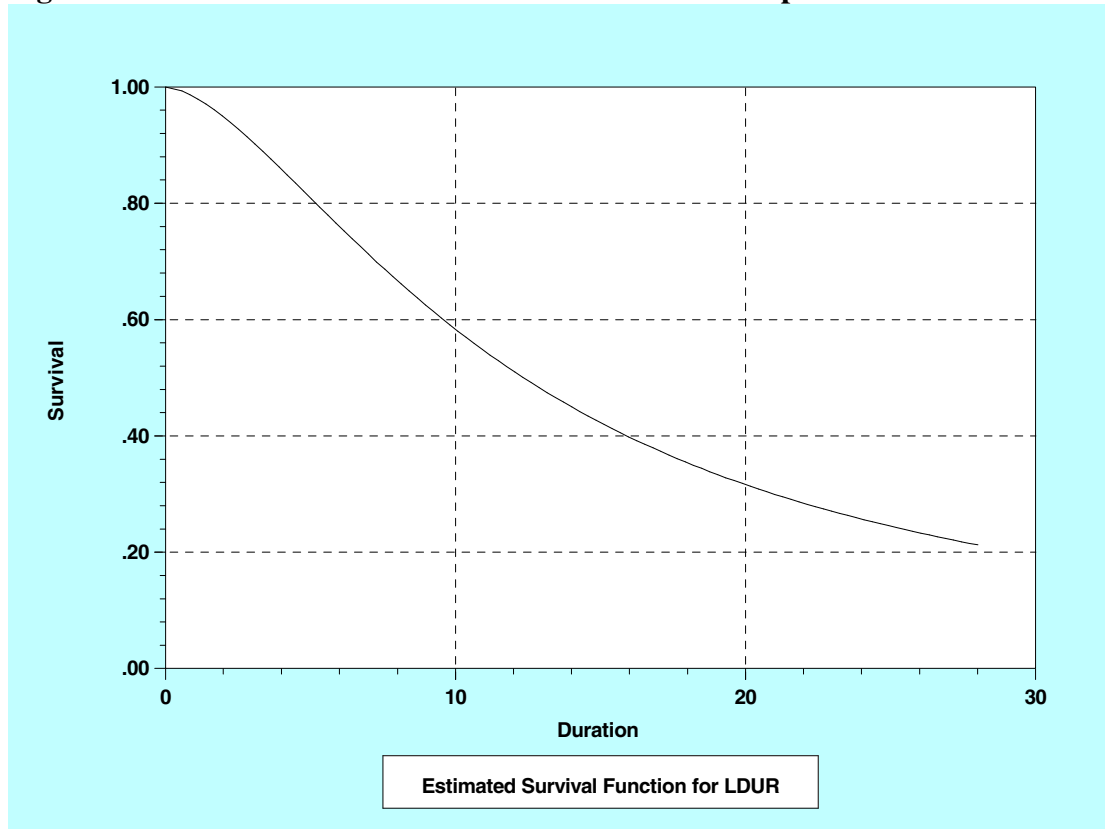
1
2
3
4
5
6
7
8
9
10
11
12
13
14
15
16
17
18
19
20
21
22
23
24
25
26
27
28
29
30
31
32
33
34
35
36
37
38
39
40
41
42
43
44
45
46
47
48
49
50
51
52
53
54
55
56
57
58
59
60

Figure 1a: Estimated Hazard Function for Micro-Enterprises



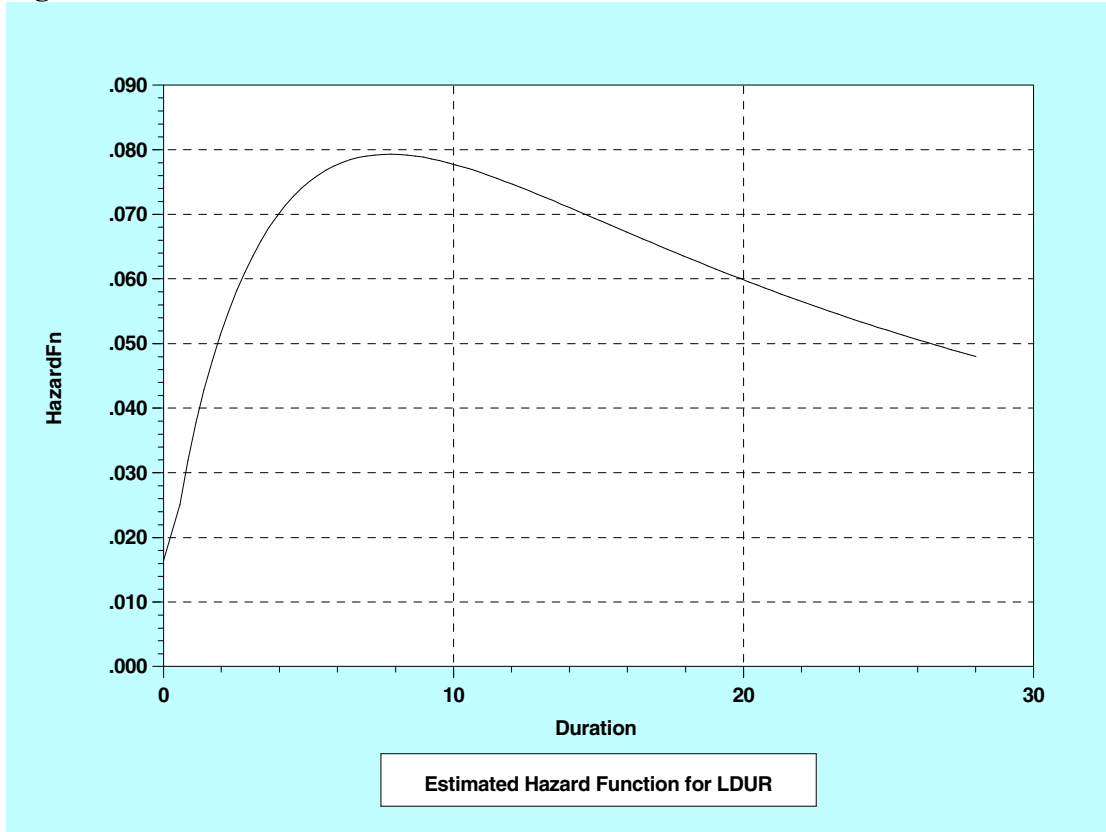
Peer Review

Figure 1b: Estimated Survival Function for Micro-Enterprises



1
2
3
4
5
6
7
8
9
10
11
12
13
14
15
16
17
18
19
20
21
22
23
24
25
26
27
28
29
30
31
32
33
34
35
36
37
38
39
40
41
42
43
44
45
46
47
48
49
50
51
52
53
54
55
56
57
58
59
60

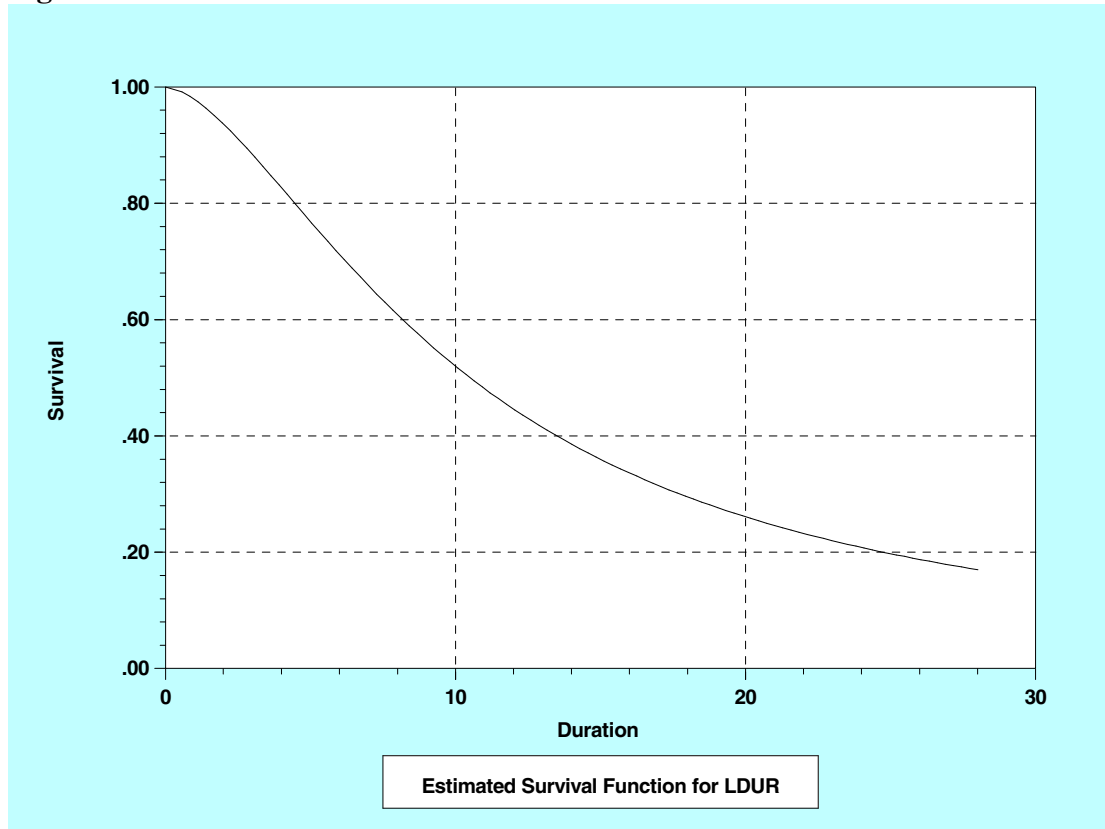
Figure 2a: Estimated Hazard Function for SMEs



Peer Review

1
2
3
4
5
6
7
8
9
10
11
12
13
14
15
16
17
18
19
20
21
22
23
24
25
26
27
28
29
30
31
32
33
34
35
36
37
38
39
40
41
42
43
44
45
46
47
48
49
50
51
52
53
54
55
56
57
58
59
60

Figure 2b: Estimated Survival Function for SMEs



1
2
3
4
5
6
7
8
9
10
11
12
13
14
15
16
17
18
19
20
21
22
23
24
25
26
27
28
29
30
31
32
33
34
35
36
37
38
39
40
41
42
43
44
45
46
47
48
49
50
51
52
53
54
55
56
57
58
59
60

AN ANALYSIS OF NEW FIRM SURVIVAL USING A HAZARD FUNCTION

by

Phil Holmes, Andrew Hunt and Ian Stone

Abstract

A unique dataset is used to provide a detailed examination of the survival of newly-established manufacturing firms in north-east England. Using data on 781 firms established between 1973 and 2001, log-logistic hazard models are estimated separately for (i) micro-enterprises and (ii) small and medium establishments (SMEs). Both micro-enterprises and SMEs show clear evidence of positive duration dependence, followed by negative duration dependence. We find the two firm types are differentially affected by firm-specific and macroeconomic variables. Increases in initial plant size impact negatively on micro-enterprise survival and positively on SME survival.

Keywords: new firm survival, hazard models, micro-enterprises.
Word count: 6700 words.

JEL classification: C41, L10.

Running title: Hazard estimations of new firm survival.

Corresponding author: Andrew Hunt, School of Economics, Finance and Business. University of Durham, Mill Hill Lane, Durham, DH1 3HY, UNITED KINGDOM, Tel: 0191 334 5424, Fax: 0191 334 5201.

Andrew Hunt is a Research Associate in the School of Economics, Finance and Business at the University of Durham

Professor Ian Stone is a Professorial Fellow in the School of Economics, Finance and Business at the University of Durham

I. INTRODUCTION

In the UK since the early 1980s the birth of new firms has been seen as a major means by which unemployment might be constrained or reduced. As such, a panoply of government initiatives designed to promote small firm start-ups and (to a lesser extent) growth has been introduced (for a discussion of some of the key policies see Storey (1990)). Implicit in these policies has been the assumption that, once established, firms continue to make a contribution to the economy. While firm entry is clearly of importance, arguably *duration* can be considered to be of greater significance in terms of meeting long-term policy objectives related to employment and the growth of the economy. The current concern to develop policies to help improve the rates of business succession (when the owner wishes to exit) reflects this concern (Stone, *et al.* 2004). Over the past two decades considerable work has been undertaken on the post-entry performance of new firms (see, for example, Mata and Portugal (2002), Arrighetti and Vivarelli (1999), Audretsch and Mahmood (1995), and Mata and Portugal (1994))¹. However, while much attention has been given to factors affecting the birth and death of firms in the UK, and to the duration of firm

¹ In addition to these studies there have been others examining post-entry performance and new firm entry, see, for example, Agarwal (1998), Audretsch (1995), Audretsch and Mahmood (1994), Audretsch, Santarelli and Vivarelli (1999), Dunne, Roberts and Samuelson (1988), Fotopoulos and Louri (2000) Geroski (1991), Mahmood (2000), Pérez, Llopis and Llopis (2004), Persson (2004), Segarra and Callejón (2002) and the special edition of the *International Journal of Industrial Organisation*, edited by Mata and Audretsch (1995).

1
2
3 survival in other countries, to date there has been a paucity of work directly
4
5 investigating new firm duration in the UK².
6
7
8
9

10
11 Furthermore, in examining the firm duration issue, all previous studies have
12
13 undertaken analysis for new firms as a group. This may have resulted in some of
14
15 the underlying relationships being masked. Therefore, in this study, the approach
16
17 taken is to use sub-samples based on the characteristics that the literature
18
19 suggests may be relevant to survival, for example, local vs. non-local ownership
20
21 and micro as opposed to larger sized firms (SMEs). Interestingly, the result to
22
23 emerge is that there are considerable differences between the factors affecting
24
25 the survival of micro-enterprises and those affecting small and medium
26
27
28
29
30

31 ² Dunne and Hughes (1992) examine firm survival for UK companies and Reid (1991) analyses
32
33 factors helping small entrepreneurial firms to stay in business using a sample of firms in Scotland,
34
35 but in neither paper is a longitudinal dataset available and both use a sample which does not relate
36
37 specifically to new firms. In contrast, Taylor (1999) investigates the duration of self-employment
38
39 spells in Britain using the British Household Panel Survey. However, this involves an analysis of
40
41 duration at the level of the individual, rather than the firm. Thus the current work can be viewed
42
43 as being complementary to Taylor's study. McCloughan and Stone (1998) examine survival in the
44
45 context of the UK, but their work relates to foreign multinational subsidiaries and uses a much
46
47 smaller sample than is used in the current study. In a comprehensive study, Disney *et al* (2003)
48
49 examine entry, exit and survival of UK manufacturing firms. However, this study only relates to
50
51 establishments with 100 or more employees, does not relate specifically to new firms and
52
53 examines a relatively short time period (1986–1991) compared to the current study. Li and
54
55 Hamblin (2003) investigate the effects of manufacturing performance on the survival of UK
56
57 manufacturing companies' using a relatively small sample of 156 UK wide observations,
58
59 collected during the 1980s and 1997.
60

1
2
3 establishments (SMEs)^{3,4}. In the light of this, previous studies may well have
4
5
6 resulted in inappropriate policy conclusions being drawn.
7
8
9

10
11 This shortage of work on the UK is due primarily to the lack of suitable available
12
13 datasets to investigate the issue. As Mata and Audretsch note, “in order to
14
15 analyze the post-entry performance of firms, a large longitudinal database to track
16
17 firms subsequent to their entry is needed.” (1995, p416). To date, such a
18
19 database has not been available for the UK. The current study utilises a unique,
20
21 relatively large, database relating to manufacturing firms established in the
22
23 Wearside area of England over the twenty-nine year period 1973-2001 compiled,
24
25 over time, by one of the authors. This has been augmented with additional data
26
27 from the Office of National Statistics. By using this dataset, augmented by other
28
29 data, together with the hazard rate approach, we are able to analyse firm duration
30
31 over a long period (1973-2002), and to identify the impact of firm-specific,
32
33 industry-specific and macroeconomic variables on firm survival. In addition,
34
35 given the size of the database used, we are able to analyse separately the factors
36
37 determining the survival of (i) micro-enterprises and (ii) SMEs. Given that there
38
39
40
41
42
43
44

45
46 ³ We define micro-enterprises as establishments with total employment at the start-up date of nine
47
48 or less and SMEs as establishments with total employment at the start-up date of ten or more. It
49
50 should be noted that some of the establishments we term SMEs are not SMEs in the traditional
51
52 sense as they are plants of larger enterprises located elsewhere (see section II below for further
53
54 discussion). However, for convenience we use the terms firm, enterprise and establishment
55
56 interchangeably in relation to the sample analysed.

57
58 ⁴ It is, of course, the case that a number of studies analyse the impact of firm or plant size on
59
60 duration by including size as an independent variable (see, for example, Audretsch and Mahmood
(1995), McCloughan and Stone (1998), Disney *et al.* (2003) and Li and Hamblin (2003)).

1
2
3 are strong economic grounds for believing that these two types of enterprise will
4
5 be affected differently by different variables, it is desirable to model their
6
7 survival separately. As such, this paper makes an important contribution to our
8
9 understanding of the post-entry performance of newly-established manufacturing
10
11 firms in a UK region and provides important implications for government policy
12
13 designed to promote the survival of new small firms.
14
15
16
17
18
19

20 While the sample used here relates to one sub-region of the UK only,
21
22 nonetheless, the results have wider relevance. Industrial performance at either the
23
24 national or regional level is crucially affected by the ability of newly-established
25
26 firms and plants to survive and grow. New firms are one means by which a
27
28 manufacturing economy adjusts its specialisation over time towards more
29
30 competitive products and they are an important counterbalance to contraction and
31
32 closure. Similarly, the renewal process can be achieved by the establishment (on
33
34 green or brownfield sites) of new plants by externally-owned companies. The
35
36 extent to which the new units thrive and develop impacts upon the components of
37
38 change and thus the stock of producers over time⁵. Understanding the dynamics
39
40 of growth at the regional level has attracted increasing attention over recent years.
41
42 After decades of nationally-operated policies relating to industry, the UK has
43
44 decentralised policy formulation and delivery through the network of Regional
45
46 Development Agencies. Identifying the factors that influence firm survival within
47
48
49
50
51
52
53
54
55
56
57
58

59 ⁵ A regional illustration of the dynamic process relating to foreign direct investment is given in
60 Stone and Peck (1996).

1
2
3 an area that is typical of peripheral UK regions is thus a topic of considerable
4
5 practical relevance.
6
7

8
9
10 To summarise the results, we find that there are considerable differences in the
11
12 factors affecting the survival of micro-enterprises and SMEs. In particular, it is
13
14 shown that initial plant size has a negative impact on the survival of micro-
15
16 enterprises, but a positive impact on the survival of SMEs, while initial
17
18 ownership status is not of importance for survival of either enterprise type. It is
19
20 also shown that both types of enterprises are characterised by positive duration
21
22 dependence followed by negative duration dependence. This calls into question
23
24 the results of previous studies that have utilised hazard functions which assume
25
26 duration dependence to be monotonically increasing or decreasing (e.g. the
27
28 Weibull distribution).
29
30
31
32
33
34
35
36

37 The remainder of the paper is organised as follows: section II discusses
38
39 methodological issues and the empirical design used in this study. In section III
40
41 we set out the relationships to be examined in this paper between firm survival
42
43 and economic variables. Results are presented and discussed in section IV and
44
45 section V provides a summary and concluding remarks.
46
47
48
49
50

51 **II. METHODOLOGICAL ISSUES AND EMPIRICAL DESIGN**

52
53 In order to investigate factors affecting firm survival, it is necessary to examine
54
55 data concerning the duration of the life of a firm. A major problem encountered
56
57 when analysing duration data is that of censored data. In this study censored data
58
59 refers to those firms which were still alive at the time when the data was last
60

1
2
3 updated. To overcome the problems caused by censored data it is necessary to
4
5 consider not only whether a firm will cease trading, but also the length of time
6
7 the firm trades. This can be achieved by using a hazard rate approach. The
8
9 hazard rate model of the duration of the life of a firm provides a statistical
10
11 representation of the relation between the survival time of a firm and certain
12
13 explanatory variables. The model is a natural one for working with data which
14
15 has a longitudinal element, as it provides a method for dealing with censored
16
17 data. The hazard rate approach involves modelling the conditional probability
18
19 that a firm will cease trading over a specified period. The hazard rate can be
20
21 thought of as the rate at which firms die after duration t , given that they are alive
22
23 at least until time t .
24
25
26
27
28
29
30
31
32

33 An important concept in considering the hazard function is duration dependence.
34
35 If the hazard function for a particular distribution slopes upwards (downwards),
36
37 then the distribution has positive (negative) duration dependence. Positive
38
39 (negative) duration dependence implies that the likelihood of failure at time t ,
40
41 conditional on duration up to t , is increasing (decreasing) in t . Different
42
43 parametric specifications of the hazard function display different duration
44
45 dependence behaviour. Four widely used distributions in economics are the
46
47 exponential which displays constant duration dependence, the Weibull for which
48
49 the hazard function is monotonically increasing or decreasing (depending on the
50
51 value of the relevant parameter), the log-normal and the log-logistic which can
52
53 both display increasing duration dependence initially, followed by decreasing
54
55 duration dependence. It is also possible that the log-logistic distribution will
56
57 display only negative duration dependence. Which behaviour is displayed
58
59
60

1
2
3 depends upon the estimated value of the shape parameter. *A priori* it is not
4 obvious which distribution is most appropriate. In this study all four
5 distributions were used and the log-logistic was chosen on the basis of the log-
6 likelihood values. The results presented in the following section are based on
7 this distribution⁶. With the log-logistic distribution the hazard function is given
8 by:
9

$$\lambda(t) = \lambda\rho(\lambda t)^{\rho-1} / [1 + (\lambda t)^\rho] \quad (1)$$

10 where $\lambda(t)$ is the hazard function and ρ is a shape parameter. If $\rho > 1$ then there is
11 positive duration dependence followed by negative duration dependence. If $\rho = 1$
12 then there is monotonic negative duration dependence. Explanatory variables (or
13 ‘covariates’) can be included in the model by letting λ be a function of a set of
14 regressors:
15
16

$$\lambda_i = e^{-\beta x_i} \quad (2)$$

17 where x_i are variables which affect survival and the parameters are given by β .
18 Thus, the model is formulated in terms of the effects of explanatory variables on
19 the probability of the firm dying, the hazard function. The sign of the estimated
20 coefficients indicates the direction of the effect of the variable on the hazard
21 function, with a negative coefficient implying shorter durations (increased
22 probability of death) and a positive coefficient longer durations.
23
24
25
26
27
28
29
30
31
32

33
34
35
36
37
38
39
40
41
42
43
44
45
46
47
48
49
50
51
52
53
54
55
56
57
58
59
60
⁶ In addition, the Cox proportional hazard model was also utilised. The general pattern of results was similar across all specifications. Results from the other specifications are available on request.

1
2
3
4
5
6
7
8
9
10
11
12
13
14
15
16
17
18
19
20
21
22
23
24
25
26
27
28
29
30
31
32
33
34
35
36
37
38
39
40
41
42
43
44
45
46
47
48
49
50

Previous studies of the survival of new firms have been constrained by the paucity of available data. In order to undertake detailed analysis of duration, it is necessary to have a sample of firms that is sufficiently large, covers a relatively long time period and is complete in terms of the timing of both births and deaths. In addition, in order to examine the impact of macroeconomic variables on firm survival, it is desirable for the sample to include firms with different start dates. The main database used in this study comprises a unique sample of 781 manufacturing firms in Wearside, North East England that were newly-established over the period 1973-2001⁷. Of the 781 firms, 318 (40.7%) were still in business ('alive') in 2002 (the end of the sample period), while 463 (59.3%) had ceased trading ('dead'). Table 1 provides a summary of the number of firms splitting the sample into five year sub-periods by date of establishment (with the exception of the first period which is eight years). It also provides a breakdown by sub-period of those that were alive in 2002, and hence represent truncated observations. Two important empirical issues need to be discussed. First, there is a potential problem caused by heterogeneity of the data. For example, included within the sample are externally-owned sub-units of larger enterprises, while others are completely new start-ups. While this heterogeneity of the sample is potentially problematic, it is mitigated by sub-dividing the

51
52
53
54
55
56
57
58
59
60

⁷ The vast majority of these newly-established firms consist of entirely new start-ups within the boundary of Wearside. A small number of the newly-established firms consist of recently formed local firms re-locating from outside the boundary for purposes (typically) of procuring more suitable premises; the remainder consist of externally-owned companies establishing new production facilities in the area via greenfield investment or by taking over facilities vacated by a firm which has gone into liquidation or moved out of the area.

1
2
3 sample into micro-enterprises and SMEs and by the use of plant size and
4 ownership status as independent variables. In addition, the construction of the
5 sample has ensured that it does not contain ‘dead ducks’ (very short-life firms
6 that by their nature have extremely little chance of survival)⁸. Second, it is
7 obvious from Table 1 that there was a large influx of firms in the period 1981-85,
8 with many of these firms subsequently exiting. This raises the question of
9 whether there is a cohort effect affecting this group of entrants. However, it
10 should be noted that the failure rate for this group of firms is much lower than
11 that of the firms established earlier (although obviously the latter group have had
12 a longer time in which to fail) and similar to that for that group of firms
13 established in the latter half of the 1980s. More importantly, differences in
14 cohorts through time are taken into account by the inclusion of industry-specific
15 and macroeconomic independent variables.
16
17
18
19
20
21
22
23
24
25
26
27
28
29
30
31
32
33
34
35
36
37
38
39
40
41

TABLE 1 HERE

42 The database allows the identification for each firm of the date of establishment,
43 the date of closure (if dead), the initial ownership status of the firm (foreign, UK
44 or local), plant size (as measured by the number of employees within the first two
45 years of trading), the 4-digit standard industrial classification (SIC 1992) code for
46 the firm, the total grants received (adjusted to 1990 prices) over the life of the
47
48
49
50
51
52
53
54

55 ⁸ New entrants have been identified using a variety of sources (e.g. local authority and private
56 sector industrial property lists, industrial directories, etc.), verified by either telephone or postal
57 contact at a later date. The data-gathering process is such that very short-life firms (i.e. those
58 existing for just a few months) were excluded from the database.
59
60

1
2
3 firm to 2002, and the location within the Wearside area (Washington New Town,
4 the former coalfield zone of Houghton, Inner Sunderland, Outer Sunderland).
5
6 This database information was augmented by data on macroeconomic and
7
8 industry-specific variables. In particular, use was made of data on average
9
10 annual short- and long-term real interest rates, average annual effective exchange
11
12 rates, annual sectoral growth rates, annual sectoral employment growth rates,
13
14 annual average sectoral wage rates, annual sectoral growth value-added in the
15
16 UK, annual unemployment rate in the (Northern) Region and the UK, and the 3-
17
18 digit five-firm concentration ratio at the year of establishment⁹. It is argued that
19
20 by utilising company-specific, industry-specific and macroeconomic variables
21
22 data, it should be possible to identify the main factors affecting firm survival.
23
24
25
26
27
28
29
30
31
32

33 In estimating the hazard models, the data set is divided into two sub-samples on
34
35 the basis of plant size at the establishment date. Models are estimated separately
36
37 for those firms with total employment at the date of establishment of nine or less
38
39 (micro-enterprises) and those with total employment of ten or more at the date of
40
41 establishment (SMEs). Within the original dataset were a small number of
42
43 'larger' enterprises with over 100 employees at establishment, these were
44
45 excluded on the grounds that their sizes were atypical and there is no reliable
46
47 method to ascertain if these enterprises were drawn from the same population as
48
49
50
51
52
53
54
55
56
57

58
59 ⁹ Details of the data used in the final estimations and the sources are provided in the Appendix at
60 the end of the paper.

1
2
3 the rest of the SME cohort¹⁰. This sub-division of the sample into micro and
4
5 SME is undertaken to reflect the fact that the variables determining duration are
6
7 likely to differ between micro-enterprises and SMEs¹¹. While it might have been
8
9 desirable to further sub-divide the SME group, this was not possible due to the
10
11 sample size. The sub-division resulted in a sample of 549 for micro-enterprise
12
13 firms (of which 41% were alive in 2002) and 232 SMEs (39% alive in 2002).
14
15
16
17
18
19
20
21
22

23 **III. RELATIONSHIP BETWEEN FIRM SURVIVAL AND ECONOMIC** 24 **VARIABLES**

25
26 The choice of covariates to be included in the analysis has been determined by
27
28 prior expectations based on theory and previous empirical studies. As indicated
29
30 above, it is expected that there will be three broad groups of variables which will
31
32 have a possible impact on firm survival; firm-specific, industry-specific and
33
34 macroeconomic. The first firm-specific variable to be considered is the initial
35
36 ownership status of the firm and, in particular, whether the firm is locally-owned,
37
38 UK-owned or foreign-owned. Our prior expectation is that foreign-owned firms
39
40 are likely to survive longer than the other types, due to the financial backing
41
42
43
44
45
46
47
48

49 ¹⁰ The definitions used here are broadly consistent with those of the European Commission, which
50
51 defines micro-enterprises as having between 0 and 9 employees and SMEs as having 10 - 499
52
53 employees.
54

55 ¹¹ In the results reported below this is found to be the case. Indeed, when estimations were
56
57 undertaken for the entire sample (micro-enterprises and SMEs together), a number of variables
58
59 found to be significant below, were found to be insignificant, highlighting the importance of
60
differentiating between the two types of firms.

1
2
3 which is likely to be provided by a foreign-owned parent setting up a new
4 establishment in the UK. We expect this relationship to be stronger for SMEs
5 than for micro-enterprises, since setting up a new establishment with ten or more
6 employees indicates a greater level of commitment on the part of the foreign
7 parent.
8
9
10
11
12
13
14
15
16
17

18 Many previous studies have suggested that there is a positive relationship
19 between plant size and survival (see, for example, Audretsch and Mahmood
20 (1995), McCloughan and Stone (1998), Disney *et al.* (2003), Perez *et al.* (2004)
21 and Persson (2005)). The main explanation put forward for this relationship
22 relates to the view that larger firms are more likely to have levels of output close
23 to the minimum efficient scale (MES), *ceteris paribus*, and thus smaller firms
24 have an inherent size disadvantage. While this may be true for SMEs, it is
25 questionable whether this is the case for micro-enterprises. For very small firms,
26 increases in size may have little impact in terms of moving towards the MES, but
27 may well lead to extra burdens in terms of having to generate revenue to maintain
28 the firm. As such, the expected relationship between the duration of micro-
29 enterprises and plant size is negative. Finally, a positive relationship is expected
30 between the level of grants provided to firms and firm survival. Clearly, grants
31 provide a financial cushion which either lower set-up costs or reduce running
32 costs.
33
34
35
36
37
38
39
40
41
42
43
44
45
46
47
48
49
50
51
52
53

54
55
56 Industry-specific variables have been widely examined in previous work in this
57 area. The degree of competition is expected to have an impact on firm survival,
58 with the concentration ratio being used as a proxy in several studies. The general
59
60

1
2
3 argument put forward is that increased concentration in the industry will make
4 the environment more difficult for new entrants, leading to greater risk of failure.
5
6 However, while McCloughan and Stone (1998) and Baldwin and Rafiquzzaman
7 (1995) find a significant relationship between concentration and firm duration,
8
9 Wagner (1994) finds no such relationship for German manufacturing. Wagner,
10 arguing along the lines of Geroski (1991), suggests that local conditions, in
11 particular, market niches, are more likely to be important to small entrants and,
12 thus, suggests that there may well be no significant relationship between
13 concentration and survival. Thus, previous literature is divided on the role of
14 concentration in the survival of new firms. Examination of this role here will
15 provide further insight into this issue.
16
17
18
19
20
21
22
23
24
25
26
27
28
29
30
31
32

33 There are a number of sectoral variables which may be expected to impact on
34 firm duration. Sectoral output growth rates and growth in sectoral value-added
35 are both expected to have a positive impact on survival, since increases in these
36 variables are expected to be associated with expanded market opportunities¹². In
37 contrast sectoral wage rate increases may be expected to have a negative impact
38 on survival, because such an increase is associated with rising costs. Finally,
39 there may well be differences in survival rates between different industries over
40 and above those captured by the other industry-specific variables, as some
41 industries decline, while others expand (see for example, McCloughan and Stone
42
43
44
45
46
47
48
49
50
51
52
53
54
55

56
57 ¹² In practice, such variables are highly correlated, since they are measuring very similar activity.

58
59 As a result they are not included jointly in the analysis which follows. The final estimation reports
60 results for those that were found to be the most important empirically.

1
2
3 (1998), Taylor (1999), and Li and Hamblin (2003)). For this reason, industry
4
5
6 dummy variables are included in the analysis.
7
8
9

10
11 Let us now consider macroeconomic variables. The unemployment rate is
12
13 expected to be negatively related to survival for two reasons. First,
14
15 unemployment can be considered to be a proxy for demand, with higher
16
17 unemployment being associated with lower demand. Second, it is possible that
18
19 high unemployment leads to an increase in the number of *start-ups*, particularly
20
21 for very small firms. In this case setting up a firm may be seen as an alternative
22
23 to employment and may be a choice of last resort. Clearly, if this is the case, then
24
25 we might again expect higher unemployment in the first year of operation to lead
26
27 to a greater chance of the firm dying, given that many of the start-ups are
28
29 undertaken by people less well suited or with fewer skills appropriate to running
30
31 a business.
32
33
34
35
36
37
38
39

40
41 Audretsch and Mahmood (1995) argue that the real interest rate may increase the
42
43 likelihood of failure, although their results do not support this view. They argue
44
45 that their findings may be due to the fact that most new firms do not rely on
46
47 external capital. In practice, it is likely that this argument is particularly true for
48
49 very small firms and we therefore expect that there will be no significant
50
51 relationship between interest rates and firm survival for micro-enterprises.
52
53 However, SMEs are more likely to rely on external funds and, therefore, it is
54
55 possible that there will be a negative relationship between firm survival and the
56
57 interest rate. A similar argument holds for exchange rates. This is a variable
58
59 which has been excluded from previous studies, yet could well be important
60

1
2
3 particularly for SMEs, given that they are more likely to face competition from
4
5 abroad and to be involved with imports and exports. In general, it is to be
6
7 expected that increases in the real effective exchange rate will have an adverse
8
9 affect on firm survival, since such a change implies a worsening of the
10
11 competitive position relative to overseas competitors. Clearly then, there are
12
13 strong grounds for believing that firm-specific, industry-specific and
14
15 macroeconomic variables may impact on firm survival. Furthermore, it is to be
16
17 expected that such variables will impact differentially on micro-enterprises and
18
19 SMEs. We now proceed to investigate these relationships.
20
21
22
23
24
25
26
27

28 **IV. RESULTS**

29
30 Table 2 shows the results of the final versions of the model that were estimated
31
32 for micro-enterprises and SMEs. The columns in Table 2 relate respectively to
33
34 micro-enterprises and SMEs. A number of variables discussed in the previous
35
36 section were not included in the final estimations, since they were found to be
37
38 insignificant in relation to both samples. All other variables are significant to at
39
40 least the 10% level, in the majority of cases the significance is 5% or higher. As
41
42 can be seen from Table 2, the final specification demonstrates that firm-specific,
43
44 industry-specific and macroeconomic variables have an impact on the survival of
45
46 newly-established firms. Furthermore, it is evident from the results presented
47
48 that there are substantial differences in the factors determining the survival of
49
50 micro-enterprises compared with that of SMEs.
51
52
53
54
55
56
57
58
59
60

TABLE 2 HERE

1
2
3 Before considering the variables and how they impact on firm survival, it is
4
5 instructive to examine the estimated hazard functions and to note the estimated
6
7 value of ρ , the shape parameter, in each estimation. Figures 1a and 2a show the
8
9 final estimated hazard functions for micro-enterprises and SMEs respectively.
10
11 For both types of firms the figures show clear evidence of positive duration
12
13 dependence, followed by negative duration dependence. This is borne out by
14
15 examining the estimated value of ρ in Table 3, which is shown to be
16
17 approximately equal to 1.6 for both micro-enterprises and SMEs. This is
18
19 statistically in excess of 1 and confirms that there is evidence of positive duration
20
21 dependence followed by negative duration dependence¹³. The nature of duration
22
23 dependence has received little attention in previous studies. This is surprising
24
25 given that it has important implications for policies designed to assist firm
26
27 survival (for a notable exception see Mahmood (2000), who also reports that new
28
29 firm hazard rates follow an inverted U pattern). The analysis here suggests that
30
31 for both micro-enterprises and SMEs there is an increased likelihood of death in
32
33 each subsequent period during the early years of establishment, but that there is
34
35 then a turning point such that firms which survive beyond this point are then less
36
37 likely to die in each subsequent period. The precise turning point, tp , can be
38
39 determined using the following:
40
41
42
43
44
45
46
47
48
49
50
51

$$tp = \left[\frac{(\rho-1)}{\lambda^\rho} \right]^{1/\rho} \quad (3)$$

52
53
54
55
56
57
58
59 ¹³ The standard errors reported in Table 3 imply 95% confidence intervals of 1.4264 to 1.7694
60 for micro-enterprises and 1.3825 to 1.8525 for SMEs.

1
2
3
4
5
6
7
8
9
10
11
12
13
14
15
16
17
18
19
20
21
22
23
24
25
26
27
28
29
30
31
32
33
34
35
36
37
38
39
40
41
42
43
44
45
46
47
48
49
50
51
52
53
54
55
56
57
58
59
60

Using the estimated values of λ and ρ , the turning point for micro-enterprises is found to be 8.94, while that for SMEs is 7.89. Thus, it appears that negative duration dependence takes roughly a year longer to achieve for micro-enterprises than for SMEs. Nonetheless, for both firm types the period before negative duration dependence is relatively long. This suggests that policies designed to assist firm survival should not – as is typically the case - concentrate only on the first few years of a firm's existence. Figures 1a and 2a show the estimated conditional hazard functions for the two enterprise types. These present the probabilities of death at point t conditional upon the firm surviving to the previous point in time. It can be seen that while the turning point for micro enterprises is later than for SMEs, the conditional probability of failure for micro enterprises is always lower than for SMEs. This lower probability of early death for micro-enterprises is also revealed by the estimated survival functions (Figures 1b and 2b) which show that the approximate proportions of micro-enterprises and SMEs surviving after 10 years are 60% and 50% respectively.

FIGURE 1A HERE

FIGURE 1B HERE

FIGURE 2A HERE

FIGURE 2B HERE

Let us now consider the impact on duration of firm-specific variables. The results in relation to plant size are of considerable interest, particularly given that this has been a variable that has received much attention in the literature. The results presented here for SMEs are consistent with previous studies in that they

1
2
3 provide evidence of a positive relationship between plant size and firm survival.
4
5
6 In contrast, very small firms (those with total employment of 10 or less) are less
7
8 likely to survive as start-up plant size increases. The findings offer strong
9
10 evidence of differences in duration behaviour for the two sub-groups of firms.
11
12 There thus appears to be a threshold level below which increased plant size is a
13
14 burden on firms, suggesting that previous studies, which aggregated micro-
15
16 enterprises with SMEs may have overlooked an important issue.
17
18

19
20
21
22 For both micro-enterprises and SMEs the initial ownership status of the firm was
23
24 not found to have a significant impact on survival,¹⁴ this is consistent with the
25
26 results of Matta and Portugal (2002) who compared Portuguese domestic and
27
28 foreign firms. They found that, after controlling for a limited number of firm and
29
30 industry characteristics, there were no significant differences in the failure
31
32 probabilities of the two firm types. Interestingly, our results suggest that foreign
33
34 owned plants are more likely to survive, but, that this is due to their relatively
35
36 larger size at establishment rather than their ownership status¹⁵.
37
38
39
40
41
42
43
44

45 It is clearly possible that the difference in results between micro-enterprises and
46
47 SMEs is reflecting differences in ownership, rather than size at establishment. To
48
49 investigate this, and to test the robustness of the results presented in Table 2, two
50
51

52
53 _____
54 ¹⁴ With respect to micro-enterprises the results are, perhaps, not surprising, given that only 6%
55 were UK owned and that just 2% were initially under foreign ownership.
56

57 ¹⁵ This stands in contrast to the results of Gorg and Strobl (2003) who suggest that multinational
58 plants are more 'footloose' than locally owned plants *after* controlling for plant- and industry-
59 specific characteristics.
60

1
2
3 additional regressions were estimated. These equations were estimated using
4
5 only local observations, hence removing the issue of interactions between size
6
7 and ownership, and are reported in Table 3¹⁶. Within this local sub-sample the
8
9 same size effects are observed as in the entire sample, namely a negative
10
11 relationship between size at establishment and survival for micro-enterprises and
12
13 a positive one for SMEs¹⁷. The other parameter estimates within these
14
15 regressions also exhibit identically signed coefficients to those within Table 2,
16
17 with the exception of the change in exchange rate variable (which also relates to
18
19 a different period in this second set of regressions) and also some differences in
20
21 the industry dummies which are though to reflect the make-up of plants by
22
23 industry within the sub-sample.
24
25
26
27
28
29
30
31
32
33

34
35
36
37
38
39
40
41
42
43
44
45
46
47
48
49
50
51
52
53
54
55
56
57
58
59
60

TABLE 3 HERE

Returning to the main results in Table 2, there was no evidence that the provision of grants to newly-established firms has an impact on either firm type. Finally, in relation to firm-specific variables, it is worth noting that the specific location

¹⁶ Equivalent estimations were not feasible for non-local enterprises due to an insufficient number of observations.

¹⁷ It should be noted that the size effect for SMEs was significant at only the 14% level. This may be due to the lack of 'large' SMEs within the local sub sample. The average size of the local SME was 21 employees, this compares to 31 for a UK owned SME and 38 for a foreign owned SME.

1
2
3 within the Wearside sub-region did not impact on firm duration¹⁸. This may
4 appear at first sight to be somewhat surprising given the contrasting
5 characteristics of Sunderland and Washington. The former has, over the period
6 of analysis, shed a very substantial number of jobs and faced severe problems
7 following the decline of traditional industries. While Washington, as a new
8 town, not only had a Development Corporation during some of the period
9 analysed, but also benefited from better transport links and other infrastructure
10 advantages. While old industries¹⁹ based in Sunderland were adversely affected
11 during the 1970s and 1980s, the results suggest that there was not a significantly
12 higher failure rate among newly-established manufacturing firms in Sunderland
13 compared to their counterparts in other areas. This could be due, in part, to the
14 fact that at the same time as the old industries were in decline in Sunderland,
15 there was substantial investment in improving its infrastructure from the early
16 1980s, in particular via the activities of the Tyne & Wear Urban Development
17 Corporation.

18
19
20 To summarise thus far: it is clear that, as far as firm-specific variables are
21 concerned increased plant size has a negative impact on the survival of micro-
22 enterprises, but a positive impact on the survival of SMEs. Ownership variables,
23 location and the receipt of grants do not have a significant influence on survival
24 chances.

25
26
27
28
29
30
31
32
33
34
35
36
37
38
39
40
41
42
43
44
45
46
47
48
49
50
51
52
53
54
55
56
57
58
59
60
¹⁸ In the interests of brevity, the results for the estimations including the location dummies are not reported. Inclusion of these dummies did not change the overall pattern of results. Results available on request.

¹⁹ Established prior to our sample.

1
2
3
4
5
6 Turning to industry-specific factors, the sectoral growth rate, over the first three
7 years after establishment of operations, was found to be of importance. The
8 coefficient is of the expected sign, in that higher sectoral growth in the first few
9 years of operations is associated with longer survival. This was found to be
10 highly significant for both enterprise types, broadly in line with the findings, for
11 the USA, of Audretsch and Mahmood (1995). It is particularly noteworthy that
12 the coefficients for the concentration ratio were not significant. While some
13 previous studies have found the concentration ratio at the date of establishment to
14 be significant, the results presented here are consistent with those for German
15 manufacturing presented in Wagner (1994). As Wagner argues, economy-wide
16 industry-specific indicators are unlikely to be a good proxy for influences of
17 competition and 'the lack of explanatory power of industry characteristics in the
18 survival models is not surprising at all'. (1994, p147). Thus, in relation to
19 industry-specific variables, there is clear evidence of differences across
20 industries, but little relating to other industry-specific influences on firm survival.
21
22
23
24
25
26
27
28
29
30
31
32
33
34
35
36
37
38
39
40
41
42
43
44

45 The industry dummy variables clearly show that there are some significant
46 differences across industries. For SMEs there is clear evidence of a negative
47 effect associated with the textile industry and a positive effect in the rubber and
48 plastics industry. For micro-enterprises there is a negative effect in the furniture
49 industry and a positive effect in the miscellaneous manufacturing sector.
50
51
52
53
54
55
56
57
58

59 Finally, we turn to macroeconomic variables. Three interest rate variables were
60 included in the final estimations: the real short-term interest rate in the year in

1
2
3
4
5
6
7
8
9
10
11
12
13
14
15
16
17
18
19
20
21
22
23
24
25
26
27
28
29
30
31
32
33
34
35
36
37
38
39
40
41
42
43
44
45
46
47
48
49
50
51
52
53
54
55
56

which the firm was established, the change in the short-term interest rate from the first to second year and the change in the real interest rate from the second to third year²⁰. The real interest rate at establishment was significant for both micro firms and SMEs. While the micro-enterprise coefficient has the expected negative sign, the effect is positive for SMEs. There are various possible explanations for this: (1) higher interest rates are typically associated with times of high aggregate demand, and this positive effect is dominating the negative interest rate effect; (2) it is conceivable that this coefficient is picking up a screening effect, where more marginal SMEs are less likely to be established when interest rates are high due to higher opportunity costs of capital and credit rationing effects, hence high interest rates (at start-up) creates a cohort of SMEs with lower than otherwise probabilities of failure. Changes in the interest rate from the first to second and second to third year were found to be significant for micro-enterprises. Again the interest rate effects had the anticipated sign. The difference between the impact on micro-enterprises and SMEs is in line with expectations. Thus the results presented here suggest that low and stable interest rates are important in helping micro-enterprises to survive. The final variables found to be significant relate to changes in the exchange rate. However, this is only significant for micro-enterprises. The change in the real effective exchange rate, from the second to the third year was found to be significant and to have the expected sign. The unemployment rate, either that for the region, or the UK as a whole, was found to be an insignificant variable for both enterprise types. To

57
58
59
60

²⁰ Long-term interest rates were also included, but were found to have an insignificant impact. In addition, changes in the real short-term interest rate in other years were also examined, but also found to have no significant effect.

1
2
3 summarise: macroeconomic variables do have an impact on both enterprise types,
4
5
6 but the effects are more complex for micro-enterprises than for SMEs.
7
8
9

10 11 **V. CONCLUSION**

12
13 This paper has analysed firm survival for newly-established firms in the North-
14
15 East region of England, using a unique data set of 781 firms. This study is
16
17 distinguished from previous work in that it estimates hazard functions separately
18
19 for micro-enterprises and SMEs. This division of the data was undertaken
20
21 because there are strong grounds for believing that economic factors will impact
22
23 differentially on the two firm types. The distinction between the two types of
24
25 firms is found to be important, with variables having a substantially differential
26
27 impact on micro-enterprises and SMEs. Further, the results presented here
28
29 demonstrate that firm-specific, macroeconomic and industry-specific variables
30
31 have important implications for firm survival.
32
33
34
35
36
37
38
39

40 In line with prior expectations, increases in initial plant size are seen to have a
41
42 positive impact on the survival of SMEs. However, increases in plant size were
43
44 found to impact negatively on micro-enterprise durations. In contrast to the
45
46 findings of some research, ownership of the enterprise was not identified as a
47
48 significant firm-specific variable. Our results suggest that the longer survival
49
50 durations associated with foreign ownership are a function of larger sizes at
51
52 establishment rather than ownership *per se*.
53
54
55
56
57
58

59 As far as macroeconomic variables are concerned, higher rates of unemployment
60
were not associated with survival chances. This finding would appear to be

1
2
3 incompatible with the view that micro-enterprises are often set up as an
4
5 alternative of last resort for individuals facing unemployment. The other key
6
7 macroeconomic variables that emerged from the study were interest rates and
8
9 exchange rates. For micro-enterprises, low interest rates at establishment
10
11 enhance firm survival, while beyond the first year of operation, increases in the
12
13 real interest and exchange rates impact negatively on their survival probabilities.
14
15
16
17
18
19

20 Both micro-enterprises and SMEs exhibited clear evidence of initial positive
21
22 duration dependence, followed by negative duration dependence - enterprises
23
24 displayed increased probabilities of death for the first eight to nine years. These
25
26 findings are particularly interesting in the context of current debates in the UK
27
28 concerning support for small firms. First of all, they suggest that policies to
29
30 assist survival should concentrate on more than just the first few years. After all,
31
32 the probability of death rises for almost the first decade of operations. Secondly,
33
34 there is the possibility that encouraging the rapid expansion of micro-enterprises
35
36 as a mechanism for economic growth and development, may inadvertently
37
38 increase the probability of failure for these business.
39
40
41
42
43
44
45
46
47
48
49
50
51
52
53
54
55
56
57
58
59
60

1
2
3 The authors are grateful to Tony Antoniou, Peter Johnson, Simon Parker, Martin
4
5 Robson David Storey and Colin Wren for helpful comments on an earlier draft.
6
7

8 The authors are particularly grateful to Paul Braidford for extensive help with the
9
10 data for this paper. The usual disclaimer applies
11
12
13
14
15
16
17
18
19
20
21
22
23
24
25
26
27
28
29
30
31
32
33
34
35
36
37
38
39
40
41
42
43
44
45
46
47
48
49
50
51
52
53
54
55
56
57
58
59
60

For Peer Review

References

- 1
2
3
4
5
6 Agarwal, R. (1998). 'Small firm survival and technological activity', *Small*
7
8 *Business Economic,s* 11, pp. 215-24
9
10
11 Arrighetti, A. and Vivarelli, M. (1999). 'The rôle of innovation in the postentry
12
13 performance of new small firms: Evidence from Italy', *Southern Economic*
14
15 *Journal*, 65, pp. 927-39
16
17
18
19 Audretsch, D.B. (1995). 'The propensity to exit and innovation', *Review of*
20
21 *Industrial Organization*, 10, pp. 589-605
22
23
24 Audretsch, D.B. and Mahmood, T. (1994). 'Firm selection and industry
25
26 evolution: The post-entry performance of new firms', *Journal of Evolutionary*
27
28 *Economics*, 4, pp. 243-60
29
30
31
32 Audretsch, D.B. and Mahmood, T. (1995). 'New-firm survival: New results
33
34 using a hazard function', *Review of Economics and Statistics*, 77, pp. 97-103
35
36
37
38 Audretsch, D.B., Santarelli, E. and Vivarelli, M. (1999). 'Start-up size and
39
40 industrial dynamics: some evidence from Italian manufacturing', *International*
41
42 *Journal of Industrial Organization*, 17, pp. 965-83
43
44
45
46 Baldwin, J.R. and Rafiqzaman, M. (1995). 'Selection versus evolutionary
47
48 adaptation: Learning and post-entry performance', *International Journal of*
49
50 *Industrial Organization*, 13, pp. 501-22
51
52
53
54 Disney, R., Haskel, J. and Heden, Y. (2003). 'Entry, Exit and Establishment
55
56 Survival in UK Manufacturing', *Journal of Industrial Economics*, 51, pp. 91-
57
58 122.
59
60

- 1
2
3 Dunne, P. and Hughes, A. (1992). 'Age, size, growth and survival: UK
4
5 companies in the 1980s', *Journal of Industrial Economics*, 42, pp. 115-40
6
7
8
9 Dunne, T., Roberts, M.J. and Samuelson, L. (1988). 'Patterns of firm entry and
10
11 exit in US manufacturing industries', *Rand Journal of Economics*, 104, pp.
12
13 671-98
14
15
16 Fotopoulos, G. and Louri, H. (2000) 'Location and Survival of New Entry',
17
18 *Small Business Economics*, 14, pp. 311-21
19
20
21 Gorg, H. and Strobl, E. (2003) 'Multinational Companies, Technology Spillovers
22
23 and Plant Survival' *The Scandinavian Journal of Economics*, 105, pp. 581-95
24
25
26 Geroski, P.A. (1991). *Market Dynamics and Entry*, Blackwell, Oxford
27
28
29 Li, X. and Hamblin, D. J. (2003) 'The Impact of Performance and Practice
30
31 Factors on UK Manufacturing Companies' Survival' *International Journal of*
32
33 *Production Research*, 41, pp. 963-79
34
35
36 Mahmood, T. (2000) 'Survival of Newly Founded Businesses: A Log-Logistic
37
38 Model Approach' *Small Business Economics*, 14, pp. 223-37 **volme**
39
40
41 Mata, J. and Audretsch, D.B. (eds.) (1995). 'The Post-Entry Performance of
42
43 Firms', special issue of *International Journal of Industrial Organization*, 13,
44
45 pp. 413-614
46
47
48
49 Mata, J. and Portugal, P. (1994). 'Life duration of new firms', *Journal of*
50
51 *Industrial Economics*, 42, pp. 227-45
52
53
54 Mata, J. and Portugal, P. (2002). 'The Survival of New Domestic and Foreign
55
56 Firms', *Strategic Management Journal*, 23, pp. 323-43
57
58
59
60

- 1
2
3
4
5
6
7
8
9
10
11
12
13
14
15
16
17
18
19
20
21
22
23
24
25
26
27
28
29
30
31
32
33
34
35
36
37
38
39
40
41
42
43
44
45
46
47
48
49
50
51
52
53
54
55
56
57
58
59
60
- McCloughan, P. and Stone, I. (1998). 'Life duration of foreign multinational subsidiaries: Evidence from UK northern manufacturing industry 1970-93', *International Journal of Industrial Organization*, 16, pp. 719-48
- Perez, S. E., Llopis, A. S. and Llopis, J. A. S. (2004) 'Determinants of Survival of Spanish Manufacturing Firms' *Review of Industrial Organization*, 25, pp. 251-73
- Person, H. (2004) 'The Survival and Growth of New Establishments in Sweden, 1987-1995' *Small Business Economics*, 23, pp. 423-40
- Reid, G.C. (1991). 'Staying in Business', *International Journal of Industrial Organization*, 9, pp. 545-56
- Segarra, A. and Callejon, M. (2002) 'New Firms' Survival and Market Turbulence: New Evidence from Spain' *Review of Industrial Organisation*, 20, pp. 1-14
- Stone, I. and Peck, F. (1996). 'The foreign-owned manufacturing sector in UK peripheral regions, 1978-1993: restructuring and comparative performance', *Regional Studies*, 30, pp. 55-68
- Stone, I., Braidford, P. and Allinson, G. (2004) 'Small Business Succession: An International Literature Review', Annex to Small Business Service, *Passing the Baton – Encouraging Successful Business Transfers*. Department of Trade and Industry, HMSO London
- Storey, D.J. (1990). 'Evaluation of policies and measures to create local employment', *Urban Studies* 27, pp. 669-84
- Taylor, M.P. (1999). 'Survival of the Fittest? An Analysis of Self-Employment Duration in Britain', *Economic Journal* 109, pp.140-55

1
2
3
4
5
6
7
8
9
10
11
12
13
14
15
16
17
18
19
20
21
22
23
24
25
26
27
28
29
30
31
32
33
34
35
36
37
38
39
40
41
42
43
44
45
46
47
48
49
50
51
52
53
54
55
56
57
58
59
60

Wagner, J. (1994). 'The post-entry performance of new small firms in German manufacturing industries', *Journal of Industrial Economics* 42, pp. 141-54

For Peer Review

Table 1: Number of firms established by start-up date and status in 2002

Sub period	Number of firms established	Status in 2002	
		Number alive	% Alive (Truncated)
1973-80	236	55	23.3
1981-85	299	125	41.8
1986-90	131	58	44.3
1991-95	70	37	52.9
1996-2001	45	43	95.6
Total	781	318	40.7

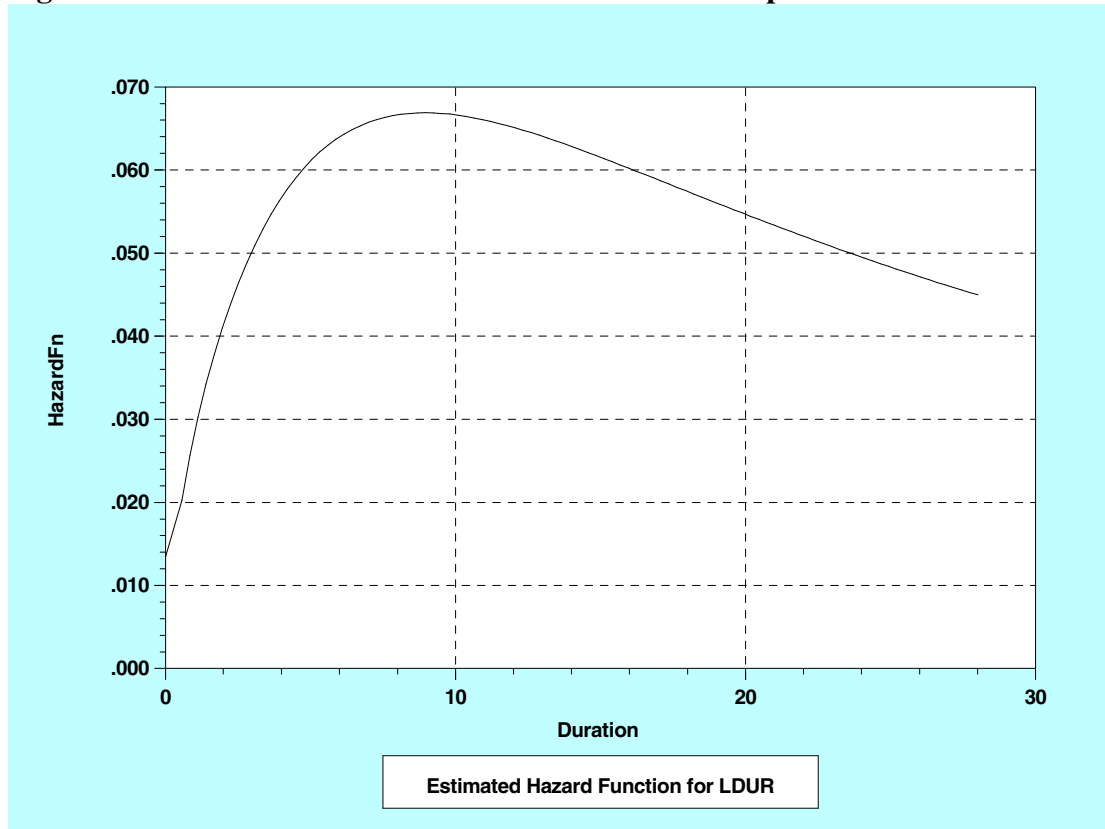
For Peer Review

Table 2: Log-logistic hazard model estimates of the determinants of firm survival for micro-enterprises and SMEs

Variable	Micro- enterprises	SMEs
Constant	2.8391 ***0.1234	2.0621 ***0.1439
Firms specific variables:		
Plant Size	-0.0670 ***0.0240	0.0166 ***0.00577
Macroeconomic variables:		
Real interest rate - year 1	-0.0405 **0.0185	0.0395 **0.0184
Change in real interest rate – first year to second year	-0.0308 *0.0170	
Change in real interest rate – second year to third year	-0.0323 **0.0166	
Change in exchange rate– second year to third year	0.0154 **0.00739	
Industry specific variables:		
Sectoral growth rate - years 1 to 3	1.4746 ***0.4689	1.9422 ***0.7182
Manufacture of wearing apparel		-1.4565 ***0.2294
Manufacture of rubber and plastic products		1.0958 ***0.4156
Manufacture of machinery and equipment not elsewhere classified	0.4171 ***0.1476	
Manufacture of furniture	-0.3805 ***0.1300	
Sigma	0.6258 ***0.0343	0.6182 ***0.0458
Number of observations	232	547
ρ	1.5979	1.6175
(se)	0.0875	0.1199
λ	0.0811	0.0953
(se)	0.00404	0.0079
Log-likelihood	-637.0381	-262.2127

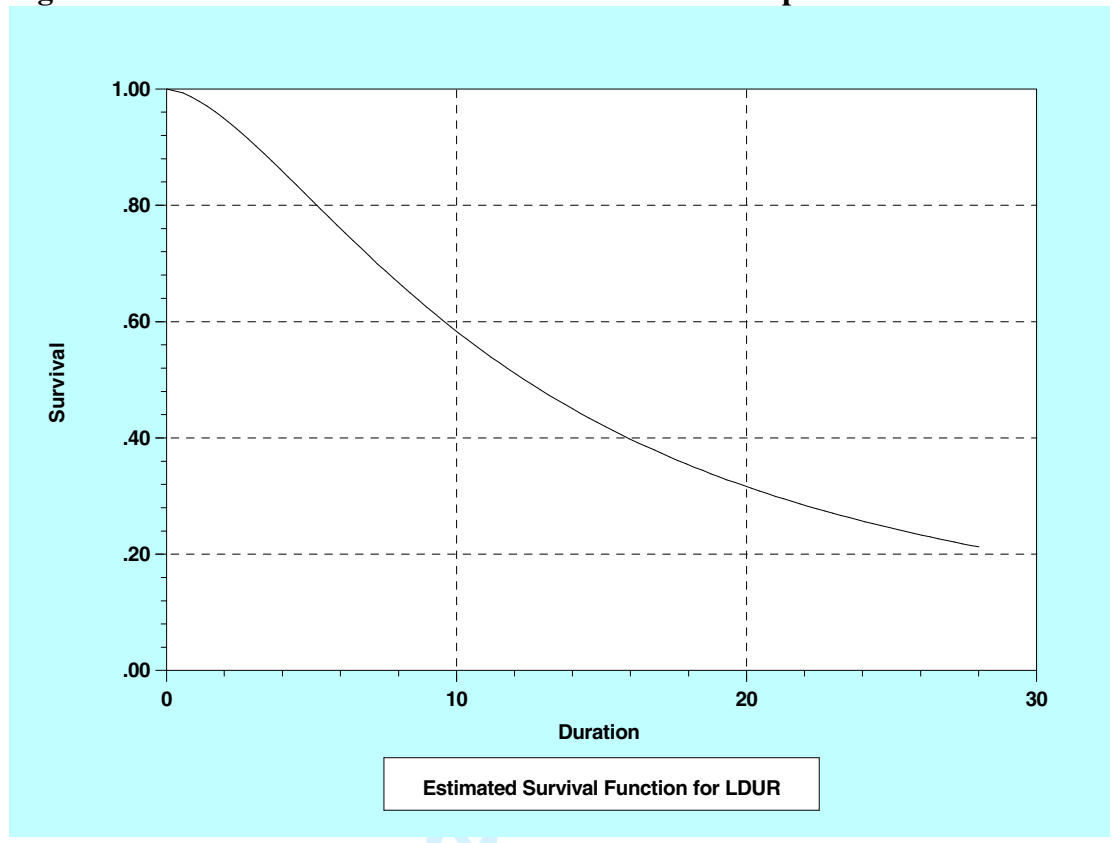
Table 3: Log-logistic hazard model estimates of the determinants of locally owned firm survival for micro-enterprises and SMEs

Variable	Local Micro- enterprises	Local SMEs
Constant	2.7900 ***0.0252	2.2034 ***0.0152
Firms specific variables:		
Plant Size	-0.0678 ***0.0252	0.0106 0.00713
Macroeconomic variables:		
Real interest rate - year 1	-0.0461 **0.0204	0.0475 *0.0248
Change in real interest rate – first year to second year	-0.0447 **0.0195	
Change in real interest rate – second year to third year	-0.0323 *0.0179	
Change in exchange rate– first year to second year	-0.0135 **0.00651	
Industry specific variables:		
Sectoral growth rate - years 1 to 3	1.0268 **0.5300	1.8033 **0.8034
Manufacture of wearing apparel		-0.6918 ***0.3853
Manufacture of rubber and plastic products	0.4438 **0.2136	
Manufacture of machinery and equipment not elsewhere classified	0.3764 **0.1589	
Manufacture of furniture	-0.3725 ***0.1342	
Manufacture of fabricated metal products		-1.4606 ***0.2557
Sigma	0.6309 ***0.0363	0.5758 ***0.0485
Number of observations	502	160
ρ	1.5849	0.1165
(se)	0.0913	0.0105
λ	0.0805	1.7366
(se)	0.0042	0.1463
Log-likelihood	-584.7601	-183.5980

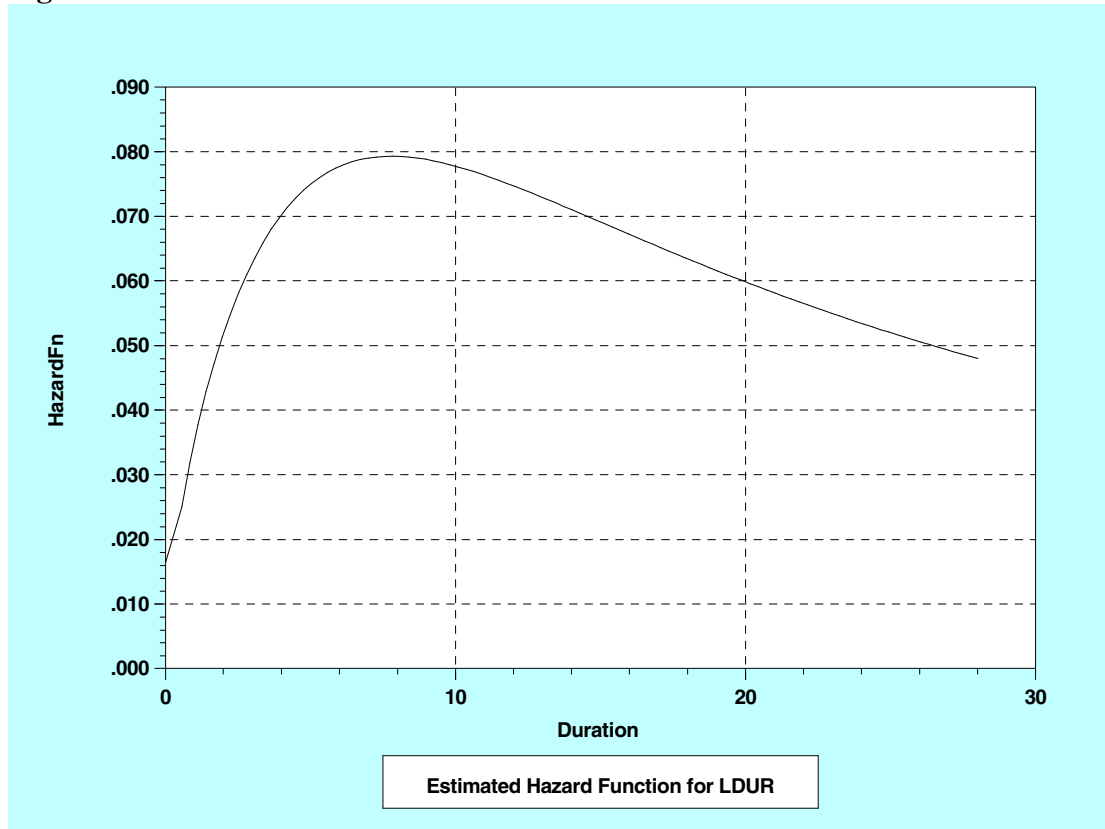
Figure 1a: Estimated Hazard Function for Micro-Enterprises

1
2
3
4
5
6
7
8
9
10
11
12
13
14
15
16
17
18
19
20
21
22
23
24
25
26
27
28
29
30
31
32
33
34
35
36
37
38
39
40
41
42
43
44
45
46
47
48
49
50
51
52
53
54
55
56
57
58
59
60

Figure 1b: Estimated Survival Function for Micro-Enterprises

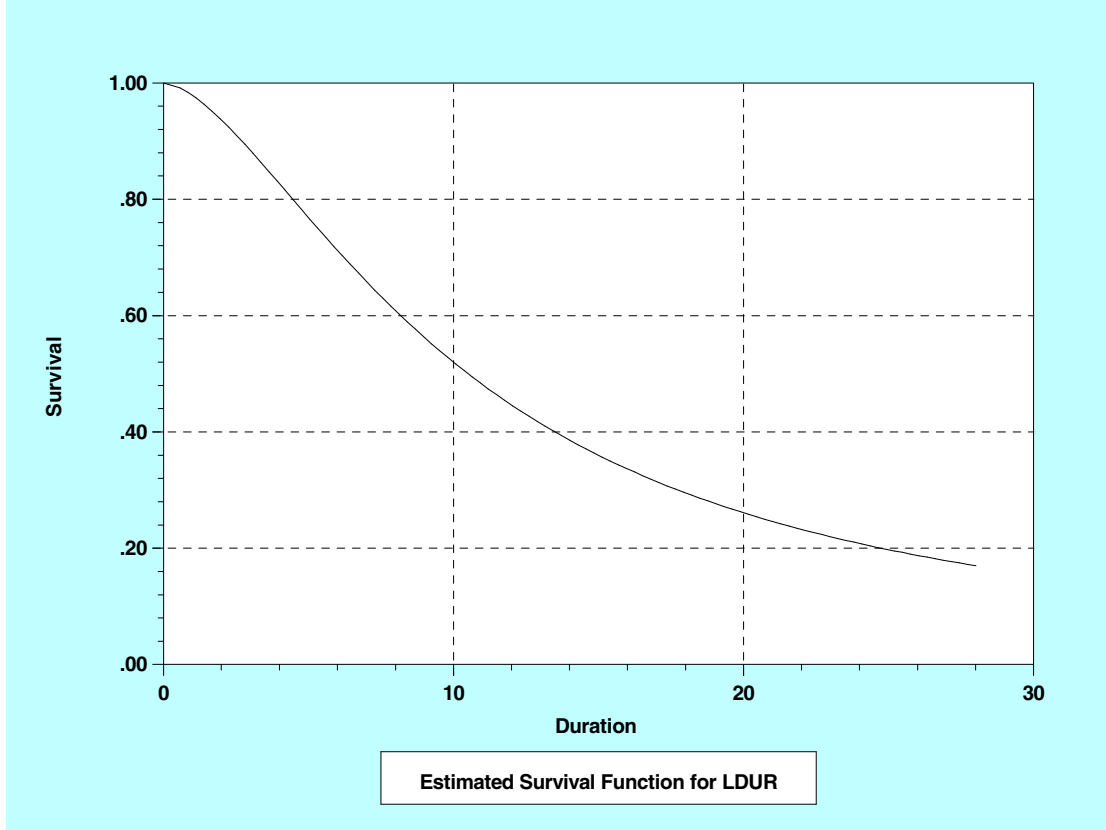


Peer Review

Figure 2a: Estimated Hazard Function for SMEs

1
2
3
4
5
6
7
8
9
10
11
12
13
14
15
16
17
18
19
20
21
22
23
24
25
26
27
28
29
30
31
32
33
34
35
36
37
38
39
40
41
42
43
44
45
46
47
48
49
50
51
52
53
54
55
56
57
58
59
60

Figure 2b: Estimated Survival Function for SMEs



Peer Review