

Total factor productivity convergence amongst Italian regions: some evidence from Panel Unit Root Tests

Fazio, Giorgio; Byrne, Joseph Paul; Piacentino, Davide

Postprint / Postprint

Zeitschriftenartikel / journal article

Zur Verfügung gestellt in Kooperation mit / provided in cooperation with:

www.peerproject.eu

Empfohlene Zitierung / Suggested Citation:

Fazio, G., Byrne, J. P., & Piacentino, D. (2009). Total factor productivity convergence amongst Italian regions: some evidence from Panel Unit Root Tests. *Regional Studies*, 43(1), 63-76. <https://doi.org/10.1080/00343400701654137>

Nutzungsbedingungen:

Dieser Text wird unter dem "PEER Licence Agreement zur Verfügung" gestellt. Nähere Auskünfte zum PEER-Projekt finden Sie hier: <http://www.peerproject.eu> Gewährt wird ein nicht exklusives, nicht übertragbares, persönliches und beschränktes Recht auf Nutzung dieses Dokuments. Dieses Dokument ist ausschließlich für den persönlichen, nicht-kommerziellen Gebrauch bestimmt. Auf sämtlichen Kopien dieses Dokuments müssen alle Urheberrechtshinweise und sonstigen Hinweise auf gesetzlichen Schutz beibehalten werden. Sie dürfen dieses Dokument nicht in irgendeiner Weise abändern, noch dürfen Sie dieses Dokument für öffentliche oder kommerzielle Zwecke vervielfältigen, öffentlich ausstellen, aufführen, vertreiben oder anderweitig nutzen.

Mit der Verwendung dieses Dokuments erkennen Sie die Nutzungsbedingungen an.

gesis
Leibniz-Institut
für Sozialwissenschaften

Terms of use:

This document is made available under the "PEER Licence Agreement". For more information regarding the PEER-project see: <http://www.peerproject.eu> This document is solely intended for your personal, non-commercial use. All of the copies of this documents must retain all copyright information and other information regarding legal protection. You are not allowed to alter this document in any way, to copy it for public or commercial purposes, to exhibit the document in public, to perform, distribute or otherwise use the document in public.

By using this particular document, you accept the above-stated conditions of use.

Mitglied der

Leibniz-Gemeinschaft



Total Factor Productivity Convergence Amongst Italian Regions: Some Evidence from Panel Unit Root Tests

Journal:	<i>Regional Studies</i>
Manuscript ID:	CRES-2006-0054.R2
Manuscript Type:	Main Section
JEL codes:	C33 - Models with Panel Data < C3 - Econometric Methods: Multiple/Simultaneous Equation Models < C - Mathematical and Quantitative Methods, D24 - Production Capital and Total Factor Productivity Capacity < D2 - Production and Organizations < D - Microeconomics, O47 - Measurement of Economic Growth Aggregate Productivity < O4 - Economic Growth and Aggregate Productivity < O - Economic Development, Technological Change, and Growth, R11 - Regional Economic Activity: Growth, Development, and Changes < R1 - General Regional Economics < R - Urban, Rural, and Regional Economics
Keywords:	Panel Unit Root Tests, Regional Convergence, Total Factor Productivity

SCHOLARONE™
Manuscripts

1
2
3
4
5
6
7
8
9
10
11
12
13
14
15
16
17
18
19
20
21
22
23
24
25
26
27
28
29
30
31
32
33
34
35
36
37
38
39
40
41
42
43
44
45
46
47
48
49
50
51
52
53
54
55
56
57
58
59
60

For Peer Review Only

Total Factor Productivity Convergence Amongst Italian Regions: Some Evidence from Panel Unit Root Tests

Joseph P. Byrne, Department of Economics, University of Glasgow, Glasgow, G12 8RT, U. K. Email: j.byrne@lbss.gla.ac.uk.

Giorgio Fazio, DSEAF, Facoltà di Economia, Università degli Studi di Palermo, Ed. 13 Viale delle Scienze, 90128, Palermo, Italy, Email: giorgio.fazio@unipa.it

Davide Piacentino, Dipartimento di Statistica e Matematica per la Ricerca Economica, Università degli Studi di Napoli "Parthenope", Via Medina, 40, 80133 Napoli (Italy), Email: piacentino@uniparthenope.it

Abstract

In this paper, we employ panel unit root tests to investigate convergence in Total Factor Productivity amongst Italian regions. These tests provide us with inference valid in the presence of heterogeneity and cross-sectional dependence, and when the cross-sectional dimension is smaller than the time dimension, allowing us to investigate convergence amongst different subset of regions. Our results add a further dimension to the conventional view on growth dynamics in the Italian peninsula depicting a lack of regional TFP convergence not only at the national level, but also at the level of geographical disaggregations where regions are conventionally thought to converge.

Keywords: Total Factor Productivity; Regional Convergence; Panel Unit Root Tests.

JEL Codes: C33, D24, O47, R11.

Introduction

The income differential between the Northern and Southern Italian regions is a well known and long standing issue. This gap still persists despite recent evidence of growth in some regions of the country. Within Europe, Italy remains one of the countries with the widest regional growth differentials. This is clearly a matter of great concern for both national and local authorities. The main policy agenda of the past, the *Intervento Straordinario per il Mezzogiorno (Special Funding Plan for the Development of the Mezzogiorno Area)*, was oriented towards increasing the amount of industrial investment through financial assistance and/or direct investment in public firms. There is now a general consensus among researchers and policymakers that whilst these policies may have been effective at generating convergence for limited periods of time, they have been unable to target structural differences (technological and financial, but also social and institutional differences) among regions and consequently to produce self-sustaining growth and convergence in the long run.

In the neoclassical framework, these structural differences affect Total Factor Productivity (TFP) and consequently long-run growth. Indeed, in the steady state, capital intensity (i.e. the capital-labour ratio) grows at the same rate of labour productivity, that in turn depends on TFP growth. Many authors (KLENOW and RODRIGUEZ-CLARE, 1997; HALL and JONES, 1999; PARENTE and PRESCOTT, 2000; EASTERLY and LEVINE, 2001) have recently asserted that international cross-country differences in labour productivity depend more on TFP than on capital intensity. For Italian regions, a similar result has been highlighted by AIELLO and SCOPPA, 2000; DESTEFANIS, 2001; ASCARI and DI COSMO, 2005. Therefore, it would appear that the process of convergence in Total Factor Productivity among Italian regions is a particularly interesting topic of investigation in order to better understand the dualistic nature of the Italian regional system.

In this paper, we depart from the traditional approach based on tests for beta and sigma

1
2 convergence in a strictly cross-sectional regression, and rely more closely on the strand of
3
4 literature originating from the work of EVANS and KARRAS, 1996, in which the time
5
6 series properties of the cross sectional data are taken into account. Additionally, we exploit
7
8 some of the recent innovations in the literature on panel unit root tests and incorporate three
9
10 particular improvements with respect to the conventional methodology. Firstly, we account
11
12 for the potential panel heterogeneity arising from the different economic structure of each
13
14 region. Secondly, we consider the possibility that each region might be characterised by a
15
16 different growth path. Finally, we incorporate the potential cross-sectional dependence due
17
18 to common shocks hitting different sets of regions at the same time.
19
20
21
22

23 Bearing all this in mind, the remainder of the paper is organised as follows. The next
24
25 section provides a brief preliminary discussion on regional convergence in Italy. The third
26
27 section introduces the econometric methodology. The fourth section presents the empirical
28
29 implementation and discusses the results. Finally, the fifth section concludes and makes
30
31 suggestions for further research.
32
33
34
35
36

37 Regional Convergence in Italy

38
39
40 The literature on the empirical estimation of convergence in Italy developed after the
41
42 work of BARRO and SALA-i-MARTIN, 1991. These authors estimated for Italy absolute
43
44 convergence in GDP per capita at an average rate of 2 percent per annum during the period
45
46 1950-1985. This result contrasts starkly with the dualistic nature of growth in Italy and
47
48 consequently led many researchers to question the robustness of these estimates. Indeed,
49
50 later studies have highlighted how the results of BARRO and SALA-i-MARTIN, 1991, may
51
52 well depend on the particular time period under consideration and also on the methodology
53
54 adopted. There is now a widespread agreement that during the 1960s and the first part of the
55
56 1970s the process of convergence reached its apex, whilst the more recent decades are
57
58 characterised by a tendency for regional economies to diverge (see DI LIBERTO, 1994;
59
60

1
2 MAURO and PODRECCA, 1994; PACI and PIGLIARU, 1995; CELLINI and SCORCU,
3
4 1997; PACI and SABA, 1998; MARGANI and RICCIUTI, 2001).

5
6 MARGANI and RICCIUTI, 2001, depart from the conventional BARRO and SALA-i-
7
8 MARTIN approach and use the methodology suggested by EVANS and KARRAS, 1996, to
9
10 analyse the process of convergence in regional GDP per capita during the period 1951-1998.
11
12 These authors estimate a high rate of convergence for the entire period. However, they reject
13
14 the hypothesis of absolute convergence and accept that of conditional convergence.
15
16 Moreover, when they break the period into two sub-periods (1951 to 1973 and 1974 to
17
18 1998), they find evidence of absolute convergence for the first period and divergence for the
19
20 second, a result that is common to other studies.
21
22
23
24

25
26 Most of the literature seems to identify a dualistic process of growth between the
27
28 Centre/North and the Southern regions. Some studies (DI LIBERTO, 1994; MAURO and
29
30 PODRECCA, 1994; PACI and SABA, 1998) reach this conclusion using a set of dummy
31
32 variables in the estimation of a convergence equation to account for the greater homogeneity
33
34 between regions characterised by geographical proximity. A similar result emerges in a
35
36 strand of literature that uses data disaggregated at the level of Provinces in order to measure
37
38 the process of convergence more accurately within geographical sub-units (see, for example,
39
40 COSCI and MATTESINI, 1995; FABIANI and PELLEGRINI, 1997). In particular, ARBIA
41
42 *et al.*, 2003, analyse convergence in GDP per capita of Italian Provinces during the period
43
44 1951-2000. They use models with spatial dependence, and show that two different spatial
45
46 regimes characterise two different sub-periods. During the first period, between 1951 and
47
48 1970, only Provinces with relatively high income follow a process of convergence. During
49
50 the second period after 1971 this result is completely inverted, and the incomes of poorer
51
52 Provinces show a tendency to converge. It is interesting to note that while during the first
53
54 period Provinces with a lower income are located in the South, but also in the Centre (Lazio,
55
56 Umbria, Marche and Toscana) and the North-East (Friuli Venezia Giulia and Veneto),
57
58
59
60

1 during the second period low income Provinces are only located in the South. This result is
 2 suggestive of a tendency for the Southern regions in general to converge along a unique
 3 growth path that drives them fatally away from the National average. On the other hand, the
 4 Centre-Northern regions seem to grow along different but virtuous paths.
 5
 6
 7
 8
 9

10 The focus of these studies, however, is mostly on labour productivity and GDP per
 11 capita, while less attention is dedicated to TFP (for some exceptions, see MARROCU *et al.*,
 12 2001; DI LIBERTO *et al.*, 2003, 2004; DESTEFANIS and SENA, 2005). We believe that
 13 this is a limitation of the existing literature. Indeed, TFP reflects a wide array of both
 14 tangible and non-tangible factors that determine the efficiency of the economy, and
 15 production in particular. Since the persistence of spatial differences in Italy can largely be
 16 rooted in the efficiency of the production system, an analysis of convergence which looks at
 17 TFP can be particularly interesting in order to analyse the structural nature of the process of
 18 convergence between regions in the peninsula.
 19
 20
 21
 22
 23
 24
 25
 26
 27
 28
 29
 30
 31
 32
 33
 34

35 Econometric Methodology

36 The traditional approach to testing for convergence applies Ordinary Least Squares
 37 (OLS) to regress the average growth rate of per capita output over a specified period, $\Delta\bar{y}_i$,
 38 on the initial level of per capita output, y_{i0} , and a number of country specific variables, x_{ik} ,
 39 introduced to capture cross-country structural differences,¹ as follows:
 40
 41
 42
 43
 44
 45
 46
 47
 48

$$49 \Delta\bar{y}_i = \alpha + \beta y_{i0} + \sum_{k=1}^K \delta_k x_{ik} + \varepsilon_i, \quad (1)$$

50 where δ_k is the control variables' set of parameters and ε_i is an economy-specific random
 51 disturbance. In this specification, where the country/region specific factors are controlled
 52 for, the parameter β on the initial level of income measures the so-called conditional
 53 convergence. Clearly, there must be a negative correlation between the period average
 54 growth and the initial level of per capita output in order to conclude in favour of the
 55
 56
 57
 58
 59
 60

1
2 convergence hypothesis, i.e. economies starting at a lower income must have grown more
3
4 quickly than those starting at a higher income. This procedure is usually applied over the
5
6 widest possible cross-section of economies.
7

8
9 However, EVANS, 1996, shows that if ε_i is correlated with y_{i0} , parameter estimates
10
11 of equation (1) obtained via OLS are biased, unless $y_{it} - (1/N)\sum_i y_{it}$ is a stationary process
12
13 and the cross-country or cross-regional differences are permanent (hence uncorrelated with
14
15 ε_i). If these conditions are met, the N economies are said to converge, and inferences on the
16
17 heteroskedastic-consistent t-ratio of β and the F-ratio from the δ_s of equation (1) are valid.
18
19 Three further issues arise with respect to the traditional approach. Firstly, technology
20
21 generally differs widely across economies (countries or regions). Secondly, the assumption
22
23 that all the economies have identical first-order autoregressive properties relies on the
24
25 further unlikely assumption that the set of variables x_k is able to control for all differences.
26
27 These two assumptions imply that the traditional approach is valid only if the considered
28
29 economies are homogeneous. Finally, a strictly cross-sectional regression of the equation (1)
30
31 type throws away all of the time series variation of the series and disregards the dynamic
32
33 properties of the problem.
34
35
36
37
38
39
40
41

42 To tackle these issues, EVANS and KARRAS, 1996, suggest testing for the
43
44 stationarity of the demeaned series using the following regression:²
45
46

$$\Delta(y_i - \bar{y})_t = \theta_i + \varphi_i(y_i - \bar{y})_{t-1} + \sum_{s=1}^T \lambda_{is} \Delta(y_i - \bar{y})_{t-s} + v_{it}, \quad (2)$$

47
48 where $\bar{y}_i = (1/N)\sum_i y_{it}$, θ_i is an individual-specific constant term (a fixed effect), λ_i is a set
49
50 of parameters for the serial correlation terms, and v_{it} is a series of randomly distributed
51
52 shocks. It is further assumed that $\varphi_1 = \varphi_2 = \dots = \varphi_i = \dots = \varphi_n = \varphi$. Clearly, in this framework
53
54 $\varphi = 0$ if the economies diverge, and $\varphi < 0$ if they converge.³ However, the authors dispense
55
56 from two critical facts. Firstly, they assume that v_{it} are uncorrelated, an assumption that is
57
58
59
60

likely to be untenable, especially for a finite cross-section of regional economies. Secondly, they do not exploit the fact that φ can be equal to zero even if only a fraction of the economies in the sample diverge.

In this paper, we intend to overcome some of these limitations exploiting recent advances in Panel Unit Root (PUR) tests. These tests, which dramatically increase the power of their univariate version by pooling cross sectional time series data, are particularly suited to test the notion of convergence introduced by EVANS and KARRAS. One of the first PUR tests was initially developed by LEVIN and LIN, 1993, and then refined in LEVIN *et al.* (LLC), 2002. This test is very similar to the one proposed by EVANS and KARRAS and can be essentially seen as a pooled Augmented Dickey-Fuller (ADF) test as follows,

$$\Delta\tilde{y}_{it} = \alpha_0 + \alpha_1^* \tilde{y}_{it-1} + \beta t + \sum_{j=1}^{p+1} \alpha_j^* \Delta\tilde{y}_{it-j} + \tilde{\varepsilon}_{it}, \quad (3)$$

where $\tilde{y}_{it} = y_{it} - \bar{y}_t$, and α_0 and t are respectively a constant and a time trend that can be additionally included. As in the univariate ADF, under the null hypothesis the series are non-stationary or integrated of order one, $\tilde{y}_{it} \sim I(1)$. LLC derive a t-statistic (t^*), which is distributed as a standard normal under the null hypothesis of non-stationarity. Although, this test can account for individual effects, time effects, and possibly a deterministic trend, it still assumes that each cross-section in the panel shares the same auto-regressive coefficient, α_1^* , i.e. all series in the panel should exhibit the same degree of mean-reversion. For reasons discussed above in reference to EVANS and KARRAS, this may be potentially restrictive. Whilst the assumption that all series converge on average may be a plausible one, the restriction that all converge at the same speed may be unreasonable, especially in the presence of cross sectional heterogeneity. In this respect, the test developed by LEVIN *et al.*, 2002, does not differ from the approach of EVANS and KARRAS. The test imposes not only homogeneity of unit root under the null hypothesis, but also homogeneity of no unit root under the alternative. This issue may be particularly relevant in our case because

1
2 differences in economic structure across Italian regions can be sizeable, with potentially
3
4 relevant implications for empirical modelling (we discuss this issue further in the section
5
6 below).
7

8
9 Another test widely used in the literature is the one proposed by IM, PESARAN and
10
11 SHIN, 2003, (IPS). These authors have implemented a test where the alternative hypothesis
12
13 is less “restrictive” than the one in LLC. IPS propose estimating individual-specific ADF
14
15 tests and then pooling the t-statistic of each test (i.e. the \bar{t} -statistic). They then compute the
16
17 exact critical values of this statistic and, after adjusting for the size of $N \times T$, produce a
18
19 statistic ($W[\bar{t}]$) which has a standard normal distribution under the null hypothesis of non-
20
21 stationarity. As in LLC, the test developed by IPS, after allowing for individual effects,
22
23 possible time trends, common time effects and lags to account for serial correlation, assumes
24
25 that all series are non-stationary under the null hypothesis. Unlike the LLC test, however,
26
27 this test does not assume that all series are stationary under the alternative, but is consistent
28
29 under the alternative that only a fraction of the series are stationary.
30
31
32
33
34

35
36 Other alternatives similar to the above tests are available, but these are the most
37
38 commonly used in the PUR literature.⁴ Within the context of panel time series, however,
39
40 SARNO and TAYLOR (ST), 1998, have suggested an alternative to LLC and IPS that we
41
42 believe to be especially useful when considering regional convergence. Sarno and Taylor
43
44 develop a multivariate version of the augmented Dickey-Fuller test that employs Zellner's
45
46 Seemingly Unrelated Regression (SURE) estimator which we consequently use to compare
47
48 against our results from LLC and IPC. The ST test involves the hypothesis, for each
49
50 equation, that the sum of the coefficients of the autoregressive polynomial is unity. The null
51
52 hypothesis consists of the joint test that this condition is satisfied over the N equations.
53
54 Hence, under the null hypothesis, all of the series in the panel are non-stationary stochastic
55
56 processes. Since the asymptotic properties of the statistic are unknown, TAYLOR and
57
58 SARNO, 1998, provide response surface estimates of the 5% critical values, derived from
59
60

1
2 Monte Carlo simulation. This test entails three main advantages. Unlike the other tests
3
4 mentioned, by relying on SURE methods, it takes account of the potential cross-sectional
5
6 dependence of errors.⁵ This is particularly important in our analysis, since common shocks
7
8 or spillovers are very likely to be correlated across regions with the effect of increasing the
9
10 process of convergence among some regions or the divergence amongst others. Moreover,
11
12 while the LLC test is more suited to small- T and large- N panels, as in standard SURE
13
14 models, the ST test can only be applied to panels where the cross-sectional dimension is
15
16 smaller than the time dimension. Hence, it is more suited to our case, where $T > N$. Finally,
17
18 thanks to this last property, we can purposefully use it to gather meaningful evidence on
19
20 convergence between smaller subsets of regions. As for the other tests, also for ST
21
22 consideration of the null and the alternative hypothesis is important. Under ST, the null
23
24 hypothesis of non-stationarity can be rejected even if just one of the series in the panel is
25
26 stationary. Hence, rejection of the null cannot be taken as conclusive evidence that each of
27
28 the series is stationary, and there is full convergence. On the contrary, if the null is not
29
30 rejected, it is possible to conclude unequivocally that all the series in the panel are non-
31
32 stationary and none exhibits a tendency to converge.
33
34
35
36
37
38
39

40 In the literature on PUR testing, KARLSSON and LÖTHGREN, 2000, have
41
42 emphasized this point by highlighting the danger of rejecting the null when only a fraction
43
44 of series is stationary and have called for a careful consideration of the null and the
45
46 alternative hypotheses. In order to aid the interpretation of the panel tests, we also
47
48 investigate the univariate behaviour of each of the regional TFP series using the unit root
49
50 test developed by ELLIOTT, *et al.* (1996).
51
52
53

54 More recent developments in PUR tests have also attempted to account for cross-
55
56 sectional dependence using factor models. Therefore, in order to gain further evidence we
57
58 also compare the ST test to two additional tests. In particular, we are going to implement the
59
60 tests proposed by BAI and NG, 2004, and by PESARAN, 2007. The PANIC (Panel Analysis

1
2 of Nonstationarity in Idiosyncratic and Common) approach by BAI and NG, 2004, uses a
3
4 factor structure to understand the nature of non-stationarity in a panel data set. This
5
6 approach can allow us to determine whether non-stationarity in a series is pervasive or
7
8 variable specific. In this case the panel time series is the sum of a cross section specific
9
10 constant, a common factor and an idiosyncratic error term. PESARAN, 2007, instead,
11
12 proposes cross sectionally augmented panel unit root tests in the case where a single factor
13
14 deals with cross sectional dependence. In particular, cross sectional averages of the panel
15
16 variables are included in the panel ADF test. We now turn to the empirical implementation.
17
18
19
20
21
22

23 Empirical Implementation

24 *Measuring Total Factor Productivity*

25
26
27
28
29 The literature on the computation of TFP is in rapid evolution and new methodologies
30
31 are continuously suggested.⁶ Yet, little consensus emerges on one specific method. In this
32
33 paper, we adopt for our purposes the Growth Accounting methodology (GA) firstly
34
35 proposed by SOLOW, 1957. The most evident limitations of this approach relate to the
36
37 choice of a particular functional form, the assumption of constant returns to scale, perfect
38
39 competition (as discussed by MORRISON, 1992), and constant factor shares and time
40
41 invariability of the production technology.
42
43
44

45
46 In spite of these limitations, the choice of GA to compute TFP is motivated in our case
47
48 by a number of considerations. The first and probably most binding relates to the limited
49
50 availability of regional Italian data, in particular, with respect to accurate estimates of the
51
52 capital stock at the sectoral level for each region, which would allow a more refined
53
54 calculation of the TFP series. Still, we believe that in a study of regional convergence some
55
56 important and interesting inference can be extracted from a regional aggregate perspective.
57
58 For the purpose of this paper, the use of a general calculation of TFP based on a residual
59
60 measurement allows us to study convergence over a broad number of factors. In agreement

1
2 with HULTEN, 2001, we can consider the variation of the residual not only as technical
3
4 change but, more generally, as a shift in the production function caused by “*technical*
5
6 *innovations, organizational and institutional changes, shifts in social attitudes...*” (page 40,
7
8 HULTEN, 2001). This interpretation of Solow’s residual seems to us particularly
9
10 appropriate in our case, given that some relevant differences between Italian regions do not
11
12 only depend on technological factors, but also on unobserved and unobservable region-
13
14 specific factors. Indeed, some of these factors are indicated in the recent literature as the
15
16 main cause of the failure of the Special Intervention Strategy adopted in Italy until the early
17
18 1990s.
19
20
21
22

23
24 However, given the above discussion and the purpose of the analysis, a measurement
25
26 error of TFP due to incorrect measurement of production factors would be a possibility. For
27
28 this reason, with respect to the measurement of capital, the most important factor in the
29
30 analysis, we have made a specific effort to obtain the net, rather than gross, capital
31
32 accumulation (see the data appendix), in order to reduce the so called productivity
33
34 “slowdown effect” (MORRISON, 1992, GITTLEMAN *et al.*, 2006). With particular
35
36 reference to the assumption of constant returns to scale, such a hypothesis seems to us less
37
38 binding for an aggregation of all the sectors in the economy (industry, agriculture, services),
39
40 as in our case. In other words, it would have been more binding, had we imposed it on
41
42 disaggregate sectoral data. Still, in order to substantiate this assertion, we have performed a
43
44 robustness analysis to assess the validity of the Constant Returns to Scale (CRTS)
45
46 assumption. This analysis, based on a non-parametric Data Envelopment Analysis (DEA)
47
48 methodology that does not assume a specific functional form and allows for variable returns,
49
50 does not provide evidence against the use of a functional form and the CRTS assumption.⁷
51
52 Hence, we feel comforted to apply the GA methodology that we describe below.
53
54
55
56
57
58

59 Since the Italian Statistical Office (ISTAT) has recently provided the national time
60
series of TFP for the period 1993-2003, but official data is not available at the regional level,

we have adapted the GA methodology in order to obtain the series of TFP for 19 Italian regions from 1970 to 2001.⁸ This approach starts from a conventional Cobb-Douglas production function with constant returns to scale:

$$Y = K^{1-\alpha} (AL)^\alpha, \quad (4)$$

where, suppressing the time subscript momentarily, Y is value added at constant prices, K is the stock of physical capital, L is labour measured in standard units, and A represents technical progress, which is assumed to be labour-augmenting (or Harrod neutral). Perfect competition is assumed in the inputs market. In this methodology, the main problem is to define a reasonable value for the labour income share (α). In many papers, this parameter is assumed to be a fixed value of 0.7 both over time and across units. Hence, the possibility of different regional economic structures is not taken into account. In order to overcome this criticism, which could be particularly binding in our case, we have used an estimate of the labour-income share as the ratio between labour costs and value added:⁹

$$\alpha = \frac{wL}{Y^p},$$

where w is the per capita income of employed workers, L is the overall number of workers (employed and self-employed) measured in standard units, and Y^p is the value added at current prices. This allows us to have labour income shares which vary both over time and across units.

[insert figure 1 about here]

Figure 1 illustrates the time variation in each region's labour-income share. Indeed, while in 1970 the average α across units was 0.7, it becomes 0.6 in 2001. This result is coherent with the hypothesis of a change in the underlying composition of the economy. From equation (4), we can obtain the value of the regional TFP, as:

$$A = TFP = \left[\left(\frac{Y}{L} \right) / \left(\frac{K}{Y} \right)^{\frac{1-\alpha}{\alpha}} \right]. \quad (5)$$

A , the Solow residual, measures the quantity of output that does not depend on the factors of production. Rearranging equation (5), the decomposition of labour productivity becomes evident:

$$\left(\frac{Y}{L} \right) = TFP \cdot \left(\frac{K}{Y} \right)^{\gamma}, \quad (6)$$

where $\gamma = (1-\alpha)/(\alpha)$.

[insert table 1 about here]

Table 1 shows the average value for each region and for macro areas of each component of equation (6) in the period 1970-2001. From this table, we can see a decrease in labour productivity from the North-West (9% above the national average) to the South (14% below the national average) of the country. A similar gap is estimated for TFP. On the other hand, the distribution of capital per unit of output seems to be more homogeneous among the macro-areas. Moreover, labour productivity is highly correlated with TFP and little with the ratio K/Y (0.80 and 0.26 correlation respectively). Hence, we believe that in order to explain the Y/L difference, it is more important to look at TFP rather than the ratio K/Y .

Figure 2 plots the regional time series for TFP obtained using the growth accounting methodology. A simple visual inspection seems to suggest a tendency for the series to converge from 1970 to 1980 and a persistence of the regional gaps over the subsequent period. Therefore, it seems particularly important to apply a testing methodology that can account for the time dynamics of the convergence process.

[insert figure 2 about here]

Results

Following the discussion in section 3, we have tried to identify convergence by

performing the LLC, IPS, and ST panel unit root tests on the distance between each region's TFP and the cross sectional average, that is to say:

$$TFP_{it}^* = \ln(TFP_{it}) - \frac{1}{N} \sum_{i=1}^N \ln(TFP_{it}) \quad (7)$$

Firstly, however, it is important to discuss further the issue of panel heterogeneity. In cross-sectional comparisons, this issue may be particularly relevant because differences in economic structure can be sizeable with potentially relevant implications for empirical modelling. Two types of heterogeneity should be considered. "Type-one" heterogeneity is due to the potential "structural" differences between regions. "Type-two" heterogeneity is more relevant to the dynamic nature of the estimation and affects the slope coefficients of the mean-reverting term. Since the work of ROBERTSON and SYMONS, 1992, and PESARAN and SMITH, 1995, it has been noted in the literature that Fixed Effects (FE) estimation is potentially inconsistent when using dynamic equations under cross sectional heterogeneity. In contrast, an average panel estimator, such as the Mean Group (MG) estimator (see PESARAN and SMITH, 1995) or a Swamy's Random Coefficient Model (RCM) will provide consistent estimates of the average of the parameters from dynamic regressions although these estimates will be inefficient since we are not fully utilising all the potential advantages of poolability in the panel.

In our context, where regions and not countries are confronted, heterogeneity in general should in theory be less relevant. In practice Italian regions differ widely in economic structure and the possibility of both type one and two heterogeneity should be considered. While the three PUR tests we propose account for type-one heterogeneity by including an individual fixed effect to the estimation, a separate analysis should be made on type-two heterogeneity. Firstly, the three tests are affected differently by this issue. While the LLC imposes homogeneity under both the null and the alternative hypotheses, concluding for full convergence, IPS and ST are consistent under the alternative hypothesis with the possibility that only a fraction of the series (just one series in the ST case) is

stationary. Hence, the consequences of heterogeneity will be smaller on the second and third tests. In order to explicitly examine panel poolability, we use a Hausman statistic¹⁰ to compare the Fixed Effects (FE) and the Random Coefficient Model (RCM). The test indicates whether the FE estimates include a bias due to slope heterogeneity and therefore whether we can pool different groups into a single panel. As suggested by PESARAN *et al.*, 1996, the test statistic, distributed as a $\chi^2(k)$, has a null hypothesis of homogeneity, when FE estimates are equal to RCM estimates, and an alternative of heterogeneity. Where $\hat{\theta}$ is a $(k \times 1)$ vector of FE estimates and $\tilde{\theta}$ is a $(k \times 1)$ vector of RCM estimates under the null of homogeneity. The test statistic is of the form

$$(\tilde{\theta} - \hat{\theta})'[V(\tilde{\theta}) - V(\hat{\theta})]^{-1}(\tilde{\theta} - \hat{\theta}) \sim \chi^2(k), \quad (8)$$

where $V(\theta)$ is the estimated variance of θ . We have used the Hausman statistic discussed above to perform a test of poolability of the data for the full sample and for different aggregations of regions. Table 2 shows that according to this test the slopes of the autoregressive parameters are homogeneous at any level of aggregation. This result is not too surprising since our measure of TFP is bound to capture the more persistent part of the growth dynamics.¹¹ Still, it reassures us with respect to the second type of heterogeneity, and we can proceed with the panel unit root tests, which are presented in table 3.

[insert table 2 and 3 about here]

The first test we apply to test for convergence is the LLC test. As discussed in section 3 this test takes into account differences between regions that are constant over time, but does not consider differences in the speed of convergence. Still, it provides us with useful evidence on the convergence process on average. Considering the full cross section, this test cannot reject the null of non stationarity in the series, leading us to conclude that there is no convergence in the Italian regional system as a whole. This result is in line with much of the literature and with conventional wisdom. Next, we partition the sample according to the geographical taxonomy conventionally used in the literature, where the Centre-North and

1
2 the South are usually considered as separate blocks of regions, and investigate whether
3
4 regions in sub-groups display any tendency to converge. Then, we further separate the
5
6 Centre-North into a Central and a Northern block. Now, more interestingly, the same test
7
8 applied first on the partition of the sample into two sub-groups, the South and the Centre-
9
10 North,¹² concludes at the 5% critical level that there is no convergence among the Southern
11
12 regions and convergence among the regions in the Centre-North. As a further check, we
13
14 have refined the groupings into different disaggregations, dividing the Centre-North between
15
16 Central and Northern regions.¹³ Now, the test concludes that there is no convergence among
17
18 Central regions and convergence among the Northern regions (at the 5% critical level).
19
20 Therefore, the LLC test seems to conclude that most of the convergence picked up in the
21
22 Centre-North grouping was coming through the convergence among the Northern regions,
23
24 while the Southern regions do not show a tendency to converge.
25
26
27
28
29

30 The second panel unit root test is by Im, Pesaran and Shin (IPS). This test adopts a less
31
32 restrictive alternative hypothesis than the LLC test and, hence, it is less affected by the
33
34 second type of heterogeneity. Applied to the entire panel, according to this test we cannot
35
36 reject the null of no stationarity, a result that mirrors the one obtained earlier. However, the
37
38 tests do not suggest convergence even when we break down the sample into sub-groups of
39
40 regions.
41
42
43

44 As discussed above, both previous tests are more suited to large- N -small- T panels and
45
46 both do not account for the potential cross-sectional interdependence between the regions
47
48 due to third factors, such as common macroeconomic shocks, or spillovers. The
49
50 methodology suggested by SARNO and TAYLOR, 1998, relying on a SURE-type
51
52 methodology, allows a step forward in both directions in that it is more suitable for small- N -
53
54 large- T panels and accounts for cross sectional errors dependence. In this test, however,
55
56 rejection of the null cannot be taken as conclusive evidence that all the series are stationary,
57
58 but that at least one is (see TAYLOR and SARNO, 1998). On the other hand, not rejecting
59
60

1
2 the null allows us to conclude that all series are nonstationary, hence no region is
3
4 converging. Interestingly and in contrast to LLC and IPS, for the full cross section this test
5
6 rejects the null hypothesis, leading us to conclude that some subset of regions could be in a
7
8 process of convergence. When we look at the geographic groupings of regions, this test
9
10 yields a similar result for the subsets of Southern, Central-Northern, and Central regions.
11
12 Although interesting, an honest interpretation of this result cannot be considered as
13
14 conclusive evidence of convergence, as it may simply be that some regions in the group are
15
16 converging, while others are not.
17
18
19

20
21 As discussed in the third section, this was a criticism of PUR tests raised by
22
23 KARLSSON and LÖTHGREN, 2000. In order to investigate this issue, we have analysed the
24
25 time series behaviour of each regional series independently using the univariate root test
26
27 proposed by ELLIOTT *et al.*, 1996.¹⁴ We present these results in table 4.¹⁵ For the TFP series
28
29 demeaned by the national average, these tests suggest that all, but one (Sicily), of the series in
30
31 the panel are non-stationary. This explains the conclusion of stationarity of the ST test. A
32
33 similar result can be claimed for the Centre and the South sub groups. On the other hand the
34
35 result of no convergence in the North, finds even further support.
36
37
38

39
40 [insert table 4 about here]
41

42 Hence, we confirm the most interesting result from this run of ST tests (i.e. the
43
44 conclusion of no evidence of convergence amongst the regions in the Northern group). This
45
46 test, as discussed above, is particularly telling with respect to the null of nonstationarity and
47
48 it allows us to conclude that when cross sectional dependence is taken into account not a
49
50 single series in the Northern group is stationary, i.e. converges towards the cross-sectional
51
52 mean. This result is particularly novel in the literature on regional disparities and growth in
53
54 Italy, where Northern regional economies are more often considered as part of a unique
55
56 growth cluster.
57
58
59

60 Finally, we present the results of panel unit root test methods based on the analysis

1
2 of potential common factors to take account of cross sectional correlation. These include
3
4 the PANIC approach to non-stationarity in panels from BAI and NG, 2004, and the Cross
5
6 Sectionally Augmented ADF (CADF) test due to PESARAN, 2007. The former can be
7
8 considered more powerful evidence since it takes account of the possibility of non-
9
10 stationarity in the common factor. Results for both of these tests are reported in Table 5. In
11
12 all cases, that is both tests for any regional sub group, these cannot reject the null of panel
13
14 non-stationarity.¹⁶

15
16
17
18 [insert table 5 about here]
19
20
21
22

23 Conclusions

24
25
26 The marked dualism between Northern and Southern regions of Italy is a well know
27
28 issue. Past evidence on regional convergence in per capita income and labour productivity
29
30 has confirmed this result. In this paper, we have investigated the issue of convergence with a
31
32 focus on the long run structural determinants of growth, measured here by Total Factor
33
34 Productivity.

35
36
37
38 As a first step, we have measured TFP for each region in Italy using the growth
39
40 accounting methodology, which allows us to obtain a panel varying TFP. Secondly, along
41
42 the lines of the literature due to EVANS and KARRAS, 1996, and exploiting recent
43
44 advances in panel data methods, we have tested for convergence in TFP using a battery of
45
46 panel unit root tests. These tests allow us to test not only for overall convergence, but also
47
48 for convergence in subsets of regions, accounting for the heterogeneity in the structure of
49
50 different regions. Using a panel unit root method based on a multivariate technique, in
51
52 particular SURE, we are also able to incorporate the effect of cross-sectional
53
54 interdependence.

55
56
57
58 The results provide us with interesting evidence. Both the Levin, Lin and Chu (LLC)
59
60 and the Im, Pesaran and Shin (IPS) tests on the entire set of Italian regions conclude in line

1
2 with the conventional wisdom that the full set of regions does not display a common process
3
4 of convergence. When we apply the Multivariate Augmented Dickey Fuller (ST) test on the
5
6 full panel, however, we reject the null hypothesis of no convergence. Upon careful
7
8 consideration of the null and the alternative hypothesis of the three tests, we can conclude
9
10 that, while there has been no overall convergence in Italy, results are consistent with the
11
12 possibility of a process of convergence among a sub set of regions.
13
14

15
16 Therefore, as a second step, we have divided the original group of nineteen regions
17
18 into geographical subgroups identified accordingly to the traditional convention. When we
19
20 split the sample into Southern and Central-Northern regions, we find once more evidence of
21
22 no convergence using LLC and IPS, but evidence of convergence when we account for cross
23
24 sectional dependence using the ST test. A similar result is obtained on the Central-Northern
25
26 group of regions. In order to clarify this point, we have further split the sample into Northern
27
28 and Central regions. This separation shows that most of the convergence picked up by the
29
30 ST test was among regions in the Centre, whilst the regions in the North do not exhibit any
31
32 tendency to converge among each other. Further evidence from univariate unit root tests
33
34 shows that the evidence of convergence in the South and the Centre cannot be considered as
35
36 conclusive, and can be a consequence of the convergences of a small number of regions. On
37
38 the other hand, the result of no convergence in the North seems to hold robust. To the best of
39
40 our knowledge, this is a novel result in the literature on (the lack of) convergence in Italy.
41
42 Additional tests, such as the PANIC by BAI and NG, 2004, and the CADF by PESARAN,
43
44 2007, strengthen this result and shift the balance of evidence towards a general conclusion of
45
46 no convergence for all of the sub-groups of regions considered. Therefore, our tests provide
47
48 substantial evidence against the usual portrait of convergence within geographical areas (the
49
50 two or three Italies). Contrary to the conventional wisdom, each region seems to follow its
51
52 own growth path.
53
54
55
56
57
58
59
60

The lack of convergence in Total Factor Productivity may explain why, as suggested

1
2 in past studies, income convergence in Italy has occurred only for limited periods of time.
3
4 Past policies have not been able to produce the much needed reduction in structural
5
6 productivity differences at the root of the persisting regional gaps. Even further divergence
7
8 is to be expected in the future, if policymakers will not make an exceptional effort to target
9
10 these structural differences. However, some caveats apply to the present work. Despite our
11
12 best attempts to reduce the consequences of some of the well known problems related to the
13
14 Growth Accounting methodology, some of these limitations may still have a bearing on our
15
16 results. Releasing some of the most stringent assumptions of this approach may yield
17
18 insights on the result of no convergence.
19
20
21
22

23 Finally, some interesting extensions beyond the scope of this paper could help shed
24
25 further light on what drives these conclusions and we propose them as a possible sequel of
26
27 this work. Firstly, a more “refined” version of TFP ultimately developing from the micro
28
29 level, may shed more light on the relationship between convergence or divergence and
30
31 potentially differing degrees of returns to scale due to the sectoral decomposition across
32
33 regions. Secondly, while in this paper we have followed a strictly time series approach to
34
35 address the estimation of convergence, a natural step forward would be to look at the
36
37 determinants of TFP and try to explain which factors may have contributed to convergence
38
39 or divergence among Italian regions over the last thirty years.
40
41
42
43

44 Acknowledgements

45
46
47 The authors wish to thank two anonymous referees and the editors for constructive
48
49 comments. The usual disclaimer applies.
50
51
52
53
54
55
56
57
58
59
60

Data Appendix

Variables Definitions

K: stock of net physical capital.

Y: value added at constant prices;

Y^P: value added at current prices;

L: labour factor measured in standard units;

w: per capita income of employed workers;

α : total labour cost (wL) divided by Value Added at current prices (Y^P)

Sources

The regional series for value added (constant and current prices), labour and per capita income of employed workers were kindly made available by FELLI *et al.*, 2004, who have reconstructed these series for the period 1970-2001. The national stock of net physical capital for the period 1970-2001 from ISTAT National Accounts (*Contabilità Nazionale*) has been disaggregated to the regional level using a matrix of regional shares created from the regional stocks constructed by PACI and PUSCEDDU, 2000, available from the North South Centre for Economic Research (Centro Ricerche Economiche Nord Sud, CRENOS). All series were carefully inspected for potential inconsistencies and discrepancies. We are particularly grateful to FELLI *et al.* for sharing their data and to PACI and PUSCEDDU for making their data available at <http://www.crenos.it>

References

- 1
2
3
4
5 AIELLO, F. and SCOPPA, V. (2000) Uneven regional development in Italy: Explaining
6 differences in productivity levels, *Giornale degli Economisti* **60**, 270-98.
7
8
9
10 ARBIA, G., BASILE, R. and SALVATORE, M. (2003) *Measuring spatial effects in*
11 *parametric and nonparametric modelling of regional growth and convergence*,
12
13
14 UNU/WIDER Project Meeting on Spatial Inequality in Development, Helsinki.
15
16
17 ASCARI, G. and DI COSMO, V. (2005) Determinants of total factor productivity in the
18 Italian regions, *Scienze Regionali-Italian Journal of Regional Science* **4**, 27-49.
19
20
21
22 BAI, J. and NG, S. (2004) A PANIC attack on unit roots and cointegration. *Econometrica*
23
24 **72**, 1127-1177.
25
26
27 BARRO, R. and SALA-i-MARTIN, X. (1991) Convergence across states and regions,
28 *Brooking Papers on Economic Activity* **1**, 107-158.
29
30
31
32 BYRNE, J.P. and DAVIS, E.P. (2005) The impact of short and long-run exchange rate
33 uncertainty on investment: A panel study of industrial countries. *Oxford Bulletin of*
34 *Economics and Statistics* **67**, 307-330.
35
36
37
38
39 CELLINI, R. and SCORCU, A. (1997) How many Italies? What data show about growth
40 and convergence across Italian regions 1970-91, *Lavori di Rassegna dell'Isco* **1**, 93-124.
41
42
43
44 CHEN, N. (2004) The behavior of relative prices in the European Union: A sectoral
45 analysis. *European Economic Review* **48**, 1257-1286.
46
47
48
49 COSCI, S. and MATTESINI, F. (1995) Convergenza e Crescita in Italia: un'analisi su dati
50 provinciali, *Rivista di Politica Economica* **85**, 35-68.
51
52
53
54
55
56
57
58
59
60
61
62
63
64
65
66
67
68
69
70
71
72
73
74
75
76
77
78
79
80
81
82
83
84
85
86
87
88
89
90
91
92
93
94
95
96
97
98
99
100
101
102
103
104
105
106
107
108
109
110
111
112
113
114
115
116
117
118
119
120
121
122
123
124
125
126
127
128
129
130
131
132
133
134
135
136
137
138
139
140
141
142
143
144
145
146
147
148
149
150
151
152
153
154
155
156
157
158
159
160
161
162
163
164
165
166
167
168
169
170
171
172
173
174
175
176
177
178
179
180
181
182
183
184
185
186
187
188
189
190
191
192
193
194
195
196
197
198
199
200
201
202
203
204
205
206
207
208
209
210
211
212
213
214
215
216
217
218
219
220
221
222
223
224
225
226
227
228
229
230
231
232
233
234
235
236
237
238
239
240
241
242
243
244
245
246
247
248
249
250
251
252
253
254
255
256
257
258
259
260
261
262
263
264
265
266
267
268
269
270
271
272
273
274
275
276
277
278
279
280
281
282
283
284
285
286
287
288
289
290
291
292
293
294
295
296
297
298
299
300
301
302
303
304
305
306
307
308
309
310
311
312
313
314
315
316
317
318
319
320
321
322
323
324
325
326
327
328
329
330
331
332
333
334
335
336
337
338
339
340
341
342
343
344
345
346
347
348
349
350
351
352
353
354
355
356
357
358
359
360
361
362
363
364
365
366
367
368
369
370
371
372
373
374
375
376
377
378
379
380
381
382
383
384
385
386
387
388
389
390
391
392
393
394
395
396
397
398
399
400
401
402
403
404
405
406
407
408
409
410
411
412
413
414
415
416
417
418
419
420
421
422
423
424
425
426
427
428
429
430
431
432
433
434
435
436
437
438
439
440
441
442
443
444
445
446
447
448
449
450
451
452
453
454
455
456
457
458
459
460
461
462
463
464
465
466
467
468
469
470
471
472
473
474
475
476
477
478
479
480
481
482
483
484
485
486
487
488
489
490
491
492
493
494
495
496
497
498
499
500
501
502
503
504
505
506
507
508
509
510
511
512
513
514
515
516
517
518
519
520
521
522
523
524
525
526
527
528
529
530
531
532
533
534
535
536
537
538
539
540
541
542
543
544
545
546
547
548
549
550
551
552
553
554
555
556
557
558
559
560
561
562
563
564
565
566
567
568
569
570
571
572
573
574
575
576
577
578
579
580
581
582
583
584
585
586
587
588
589
590
591
592
593
594
595
596
597
598
599
600
601
602
603
604
605
606
607
608
609
610
611
612
613
614
615
616
617
618
619
620
621
622
623
624
625
626
627
628
629
630
631
632
633
634
635
636
637
638
639
640
641
642
643
644
645
646
647
648
649
650
651
652
653
654
655
656
657
658
659
660
661
662
663
664
665
666
667
668
669
670
671
672
673
674
675
676
677
678
679
680
681
682
683
684
685
686
687
688
689
690
691
692
693
694
695
696
697
698
699
700
701
702
703
704
705
706
707
708
709
710
711
712
713
714
715
716
717
718
719
720
721
722
723
724
725
726
727
728
729
730
731
732
733
734
735
736
737
738
739
740
741
742
743
744
745
746
747
748
749
750
751
752
753
754
755
756
757
758
759
760
761
762
763
764
765
766
767
768
769
770
771
772
773
774
775
776
777
778
779
780
781
782
783
784
785
786
787
788
789
790
791
792
793
794
795
796
797
798
799
800
801
802
803
804
805
806
807
808
809
810
811
812
813
814
815
816
817
818
819
820
821
822
823
824
825
826
827
828
829
830
831
832
833
834
835
836
837
838
839
840
841
842
843
844
845
846
847
848
849
850
851
852
853
854
855
856
857
858
859
860
861
862
863
864
865
866
867
868
869
870
871
872
873
874
875
876
877
878
879
880
881
882
883
884
885
886
887
888
889
890
891
892
893
894
895
896
897
898
899
900
901
902
903
904
905
906
907
908
909
910
911
912
913
914
915
916
917
918
919
920
921
922
923
924
925
926
927
928
929
930
931
932
933
934
935
936
937
938
939
940
941
942
943
944
945
946
947
948
949
950
951
952
953
954
955
956
957
958
959
960
961
962
963
964
965
966
967
968
969
970
971
972
973
974
975
976
977
978
979
980
981
982
983
984
985
986
987
988
989
990
991
992
993
994
995
996
997
998
999
1000

1
2 unit root, *Journal of the American Statistical Association* **74**, 427-431.

3
4 DI LIBERTO, A. (1994) *Convergence across italian regions*, Nota di Lavoro della
5
6 Fondazione ENI Enrico Mattei (168).

7
8
9 DI LIBERTO, A., MURA, R. and PIGLIARU, F. (2003) *A panel technique for the analysis*
10
11 *of technology convergence: The case of the Italian regions*, 43rd Congress of the European
12
13 Regional Science Association (293).

14
15
16 DI LIBERTO, A., MURA, R. and PIGLIARU, F. (2004) *How to measure the unobservable:*
17
18 *a panel technique for the analysis of TFP convergence*, Crenos Working Paper (05).

19
20
21 EASTERLY, W. and LEVINE, R. (2001) It's not factor accumulation: Stylized facts and
22
23 growth models, *The World Bank Economic Review* **15**, 177-219.

24
25
26 ELLIOTT, G., ROTHENBERG, T.J. and J.H. STOCK (1996) Efficient tests for an
27
28 autoregressive unit root, *Econometrica* **64**, 813-836.

29
30
31 EVANS, P. (1996) Using cross-country variances to evaluate growth theories, *Journal of*
32
33 *Economic Dynamics and Control* **20**, 1027-1049.

34
35
36 EVANS, P. and KARRAS, G. (1996) Convergence Revisited, *Journal of Monetary*
37
38 *Economics* **37**, 249-265.

39
40
41 FABIANI, S. and PELLEGRINI, G. (1997) *Convergenza e divergenza nella crescita delle*
42
43 *province italiane*, Atti della conferenza "Ricerche Quantitative per la Politica Economica",
44
45 Banca d'Italia.

46
47
48 FELLI, E., GERLI, M. and PIACENTINO, D. (2004) *Supply-side and More Conventional*
49
50 *Demand-Side Shocks in a Structural Macroeconometric Model for Italian Regional Growth*,
51
52 17th European Advanced Studies Institute in Regional Science, Split, Croatia.

53
54
55 GITTLEMAN, M., TEN RAA, T., WOLFF, E. (2006) The Vintage Effect in TFP Growth:
56
57 An Analysis of the Age Structure of Capital, *Structural Change and Economic Dynamics*,
58
59 **17**, 306-328.

60
GROEN, J.J.J. (2000) The monetary exchange rate model as a long-run phenomenon.

1
2 *Journal of International Economics* **52**, 299-319.

3
4 HADRI, K. (2000) Testing for stationarity in heterogeneous panel data, *The Econometrics*
5
6
7 *Journal* **3**, 148-161.

8
9 HALL, R. and JONES, C. (1999) Why do some countries produce so much more output per
10
11 workers than others? *Quarterly Journal of Economics* **114**, 83-116.

12
13 HULTEN, C. (2001) Total Factor Productivity: A short biography, in Hulten C., Dean E. e
14
15 Harper M. eds., *New Development in Productivity Analysis: NBER Studies in Income and*
16
17
18 *Wealth* **63**, 1-54.

19
20 IM, S.I., PESARAN, M.H. and SHIN, Y. (2003) Testing for unit roots in heterogeneous
21
22 panels, *Journal of Econometrics* **115**, 53-74.

23
24 IMBS, J., MUMTAZ, H., RAVN, M. and REY, H. (2005) PPP strikes back: aggregation and
25
26 the real exchange rate. *Quarterly Journal of Economics* **120**, 1-43.

27
28 KARLSSON, S. and LÖTHGREN, M. (2000) On the power and interpretation of panel unit
29
30 root tests. *Economics Letters* **66**, 249-255.

31
32 ISLAM, N. (2003) What have we learnt from the convergence debate? *Journal of Economic*
33
34 *Surveys* **17**, 309-354.

35
36 ISLAM, N. (2001) Different approaches to international comparison of total factor
37
38 productivity. In HULTEN C. and HARPER, M. (Eds.) *New Development in Productivity*
39
40 *Analysis: NBER Studies in Income and Wealth* **63**, pp.465-502

41
42 ISTAT (2002) Conti Economici Nazionali, ISTAT, Roma

43
44 KLENOW, P.J. and RODRIGUEZ-CLARE, A. (1997) The neoclassical revival in growth
45
46 economics: Has it gone too far? in BERNANKE B. and ROTEMBERG J. (Eds.) *NBER*
47
48 *Macroeconomics Annual*. MIT Press, Cambridge, Massachusetts, pp. 73-103.

49
50 LEVIN, A. and LIN, C.F. (1993) *Unit Root Tests in Panel Data: Asymptotic and Finite-*
51
52 *Sample Properties*, mimeo.

53
54
55
56
57
58
59
60 LEVIN, A., LIN, C.F. and CHU, C-S.J. (2002) Unit root tests in panel data: Asymptotic and

1
2 finite sample properties, *Journal of Econometrics* **108**, 1-24.

3
4 MADDALA, G.S. and WU, S. (1999) Comparative Study of Unit Root Tests with Panel
5
6 Data and a New Simple Test, *Oxford Bulletin of Economics and Statistics* **61**, 631-52.

7
8 MARGANI, P. and RICCIUTI, R. (2001) *Further evidence on convergence across Italian*
9
10 *regions*, 41st Congress of the European Regional Science Association (219).

11
12 MARROCU E., R. PACI and PALA, R. (2001) Estimation of total factor productivity for
13
14 regions and sectors in Italy. A panel cointegration approach, *Rivista Internazionale di*
15
16 *Scienze Economiche e Commerciali*, **48**, 533-558.

17
18 MAURO, L. and PODRECCA, E. (1994) The case of Italian regions: convergence or
19
20 dualism? *Economic Notes* **24**, 447-72.

21
22 MORRISON, C. (1992) Unraveling the Productivity Growth Slowdown in the United
23
24 States, Canada and Japan: The Effects of Subequilibrium, Scale Economies and Markups,
25
26 *The Review of Economics and Statistics* **74**, 381-93.

27
28 NG, S. And PERRON, P. (2001) Lag length selection and the construction of unit root tests
29
30 with good size and power. *Econometrica* **69**, 1519- 1554.

31
32 PACI, R. and PIGLIARU, F. (1995) Differenziali di Crescita tra le Regioni Italiane:
33
34 un'Analisi Cross-Section, *Rivista di Politica Economica* **10**, 3-34.

35
36 PACI, R. and PUSCEDDU, N. (2000) Una stima dello stock di capitale per le regioni
37
38 Italiane: 1970-1994, *Rassegna Economica, Quaderni di Ricerca*, **4**, 97-118

39
40 PACI, R. and SABA, F. (1998) The Empirics of Regional Economic Growth in Italy 1951-
41
42 1993, *Rivista Internazionale di Scienze Economiche e Sociali* **45**, 515-542.

43
44 PARENTE, S. and PRESCOTT, E. (2000) *Barriers to riches*, Walras-Pareto Lectures,
45
46 Université de Lausanne.

47
48 PESARAN, M.H. (2007) A simple panel unit root test in the presence of cross sectional
49
50 dependence, *Journal of Applied Econometrics* **22**, 265-312.

51
52 PESARAN, M.H. and SMITH, R.P. (1995) Estimating long-run relationships from dynamic
53
54
55
56
57
58
59
60

1
2 heterogeneous panels, *Journal of Econometrics* **68**, 79-113.

3
4 PESARAN, M.H., SMITH, R.P., and IM, K.S. (1996) Dynamic linear models for
5
6 heterogeneous panels, in MATYAS L. and P. SEVESTRE (Eds.) *The Econometrics of Panel*
7
8 *Data*, ch.8. Kluwer Academic Publishing, Dordrecht.

9
10
11 ROBERTSON, D. and SYMONS, J. (1992) Some strange properties of panel data
12
13 estimators, *Journal of Applied Econometrics* **7**, 175-89.

14
15
16 SAIKKONEN, P. and LÜTKEPOHL, H. (2002) Testing for a unit root in a time series with
17
18 a level shift at unknown time, *Econometric Theory* **18**, 313-348.

19
20
21 SARNO, L. and TAYLOR, M.P. (1998) Real exchange rates under the current float:
22
23 Unequivocal evidence of mean reversion, *Economics Letters* **60**, 131-137.

24
25
26 SOLOW, R. (1957) Technical change and the aggregate production function, *Review of*
27
28 *Economics and Statistics* **40**, 312-20.

29
30
31 TAYLOR, M.P. and SARNO, L. (1998) The behavior of real exchange rates during the
32
33 post-Bretton Woods period, *Journal of International Economics* **46**, 281-312.

Table 1: Labour Productivity, Capital-Output ratio and Total Factor Productivity
Regional and Macro-Area Average (1970-2001)
Italy=1.00

Region	Y/L	(K/Y) ^γ	TFP
Piemonte	1.06	1.08	1.09
Lombardia	1.13	1.18	1.12
Liguria	1.09	0.89	0.95
North West	1.09	1.05	1.05
Trentino A.A.	1.06	0.83	1.03
Veneto	0.98	1.08	1.15
Friuli V.G.	0.93	0.89	1.02
Emilia R.	1.02	1.05	1.05
North East	1.00	0.96	1.06
Toscana	0.99	1.01	1.04
Umbria	0.93	1.05	0.9
Marche	0.86	0.82	0.94
Lazio	1.14	0.79	1.2
Centre	0.98	0.92	1.02
Abruzzo	0.89	0.89	0.85
Molise	0.82	0.83	0.9
Puglia	0.82	1.02	0.82
Campania	0.86	0.78	0.92
Basilicata	0.79	0.98	0.76
Calabria	0.76	0.87	0.78
Sicilia	0.95	0.99	0.83
Sardegna	0.96	1.25	0.87
South	0.86	0.95	0.84

Table 2: Hausman Test Statistic for Slope Homogeneity – TFP*

All Regions (N=19)		
Statistic	P-value	Conclusion
0.00	0.968	Homogeneity
South (N=7)		
Basilicata, Calabria, Campania, Molise, Puglia, Sardegna, Sicilia		
Statistic	P-value	Conclusion
0.10	0.748	Homogeneity
Centre-North (N=12)		
Emilia Romagna, Friuli V.G., Liguria, Lombardia, Piemonte, Trentino A.A., Veneto, Lazio, Marche, Toscana, Umbria, Abruzzo		
Statistic	P-value	Conclusion
0.68	0.408	Homogeneity
Centre (N=5)		
Lazio, Marche, Toscana, Umbria, Abruzzo		
Statistic	P-value	Conclusion
0.57	0.449	Homogeneity
North (N=7)		
Emilia Romagna, Friuli V.G., Liguria, Lombardia, Piemonte, Trentino A.A., Veneto		
Statistic	P-value	Conclusion
0.00	0.999	Homogeneity

Notes: The Hausman test examines heterogeneity across cross-sections. The null hypothesis is accepted for high P-values.

Table 3: Panel Unit Root Tests of TFP

All Regions (N=19)			
Test	Statistic	P-value	Conclusion
LLC	-5.69	0.0804	No convergence
IPS	-1.62	0.3140	No convergence
MADF	258.98*		Convergence
South (N=7) Basilicata, Calabria, Campania, Molise, Puglia, Sardegna, Sicilia			
Test	Statistic	P-value	Conclusion
LLC	-4.56	0.0888	No convergence
IPS	-1.88	0.1430	No convergence
MADF	29.26*		Convergence
Centre-North (N=12) Emilia Romagna, Friuli V.G., Liguria, Lombardia, Piemonte, Trentino A.A., Veneto, Lazio, Marche, Toscana, Umbria, Abruzzo			
Test	Statistic	P-value	Conclusion
LLC	-4.38	0.0264	Convergence
IPS	-1.56	0.4430	No convergence
MADF	89.36*		Convergence
Centre (N=5) Lazio, Marche, Toscana, Umbria, Abruzzo			
Test	Statistic	P-value	Conclusion
LLC	-2.78	0.0627	No convergence
IPS	-1.63	0.3940	No convergence
MADF	28.63*		Convergence
North (N=7) Emilia Romagna, Friuli V.G., Liguria, Lombardia, Piemonte, Trentino A.A., Veneto			
Test	Statistic	P-value	Conclusion
LLC	-3.88	0.0204	Convergence
IPS	-1.69	0.3130	No convergence
MADF	24.79*		No convergence

Notes: For the Sarno and Taylor (MADF) test, the critical value is 26.38 and test statistics significant at the 5% critical level are denoted with an asterisk (*). Levin, Lin and Chu (LLC), Im, Pesaran and Shin (IPS) and MADF all have a null hypothesis of panel unit root.

Table 4: Univariate Unit Root Results for TFP Convergence

Region	Full Sample	Centre-North	North	Centre	South
Abruzzo	-1.608 (0)	-1.545 (0)		-1.703 (0)	
Basilicata	-1.164 (1)				-1.089 (1)
Calabria	-1.265 (1)				-1.267 (1)
Campania	-1.110 (1)				-1.158 (0)
Emilia R.	-0.053 (0)	0.157 (0)	-0.211 (1)		
Friuli V.G.	-1.118 (1)	-1.058 (0)	-1.177 (0)		
Lazio	0.041 (0)	0.288 (0)		0.282 (0)	
Liguria	0.265 (0)	0.572 (0)	0.451 (0)		
Lombardia	-0.418 (0)	-0.283 (0)	-0.518 (1)		
Marche	-0.574 (0)	-0.348 (0)		-0.903 (0)	
Molise	-1.218 (0)				-1.168 (0)
Piemonte	-0.693 (1)	-0.364 (1)	-0.621 (1)		
Puglia	-1.570 (0)				-1.840 (0)
Sardegna	-1.656 (0)				-1.679 (1)
Sicilia	-2.017 (0)*				-2.081 (0)*
Trentino A.A.	-1.432 (0)	-1.67 (0)	-1.752 (0)		
Toscana	-1.680 (0)	-2.824 (0)*		-1.99 (1)*	
Umbria	0.466 (1)	-0.587 (0)		-0.576 (0)	
Veneto	0.007 (0)	-0.583 (1)	-0.337 (1)		

Notes: This table presents convergence results for Italian Total Factor Productivity based on the univariate ELLIOT, ROTHEMBERG and STOCK, 1996, point optimal unit root test. The 5% critical value is -1.96 and cases when the unit root null is rejected are denoted with an asterisk (*). The lag length (in parentheses) is established by Modified AIC approach of Ng and Perron (2001).

Table 5: Factor Augmented Panel Unit Root Tests of TFP

All Regions (N=19)		
Test	Statistic	Conclusion
Pesaran	-1.631	No Convergence
BN-ADF _F	-1.984	No Convergence
BN-PC _e	-1.770	No Convergence
South (N=7) Basilicata, Calabria, Campania, Molise, Puglia, Sardegna, Sicilia		
Test	Statistic	Conclusion
Pesaran	-1.656	No Convergence
BN-ADF _F	-1.396	No Convergence
BN-PC _e	-0.362	No Convergence
Centre-North (N=12) Emilia Romagna, Friuli V.G., Liguria, Lombardia, Piemonte, Trentino A.A., Veneto, Lazio, Marche, Toscana, Umbria, Abruzzo		
Test	Statistic	Conclusion
Pesaran	-1.567	No Convergence
BN-ADF _F	-0.921	No Convergence
BN-PC _e	-0.919	No Convergence
Centre (N=5) Lazio, Marche, Toscana, Umbria, Abruzzo		
Test	Statistic	Conclusion
Pesaran	-1.504	No Convergence
BN-ADF _F	-0.274	No Convergence
BN-PC _e	-0.108	No Convergence
North (N=7) Emilia Romagna, Friuli V.G., Liguria, Lombardia, Piemonte, Trentino A.A., Veneto		
Test	Statistic	Conclusion
Pesaran	-1.500	No Convergence
BN-ADF _F	-1.462	No Convergence
BN-PC _e	-1.981	No Convergence

Notes: The Pesaran test is a Cross Sectionally Augmented ADF (CADF) statistic which has a 5% critical value of -2.20. Bai and Ng (2004) BN-ADF_F has a 5% critical value of -2.86. Bai and Ng (2004) BN-PC_e critical value at the 5% significance level is 1.96. Both approaches are based on the assumption of one common factor, an assumption we consider in the text using BAI and NG's (2002) information criteria.

Figure 1: Labour-Income Share of Italian Regions

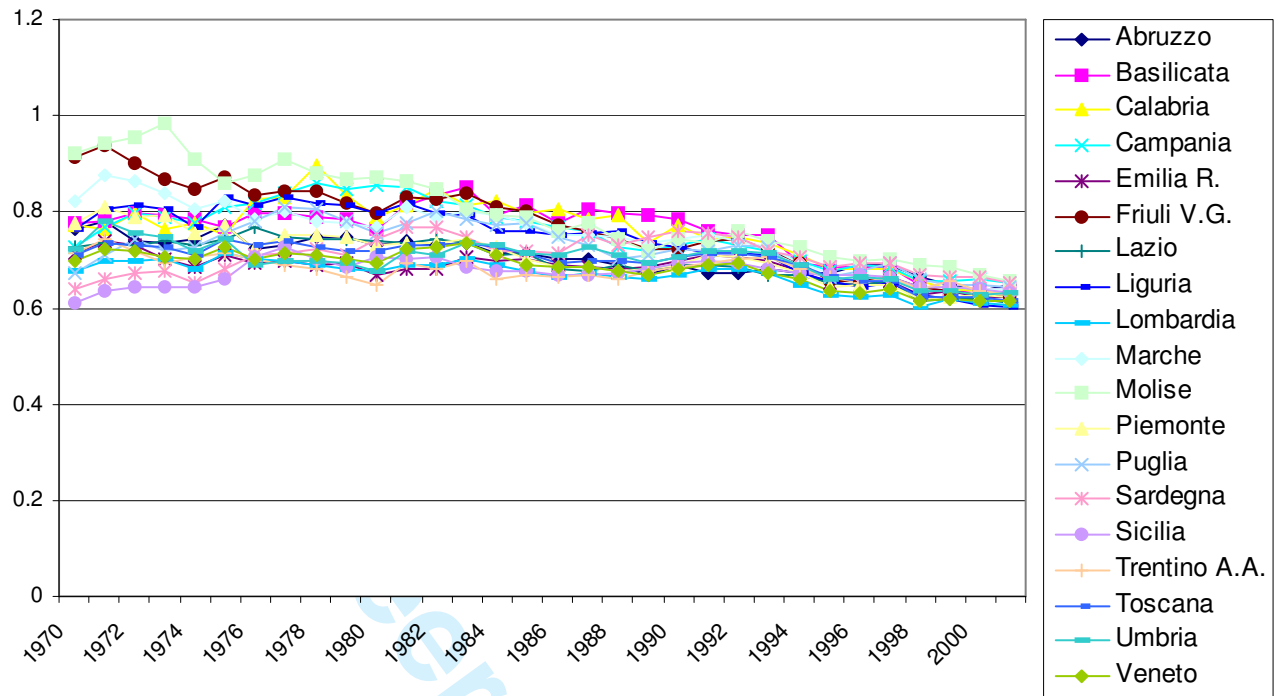
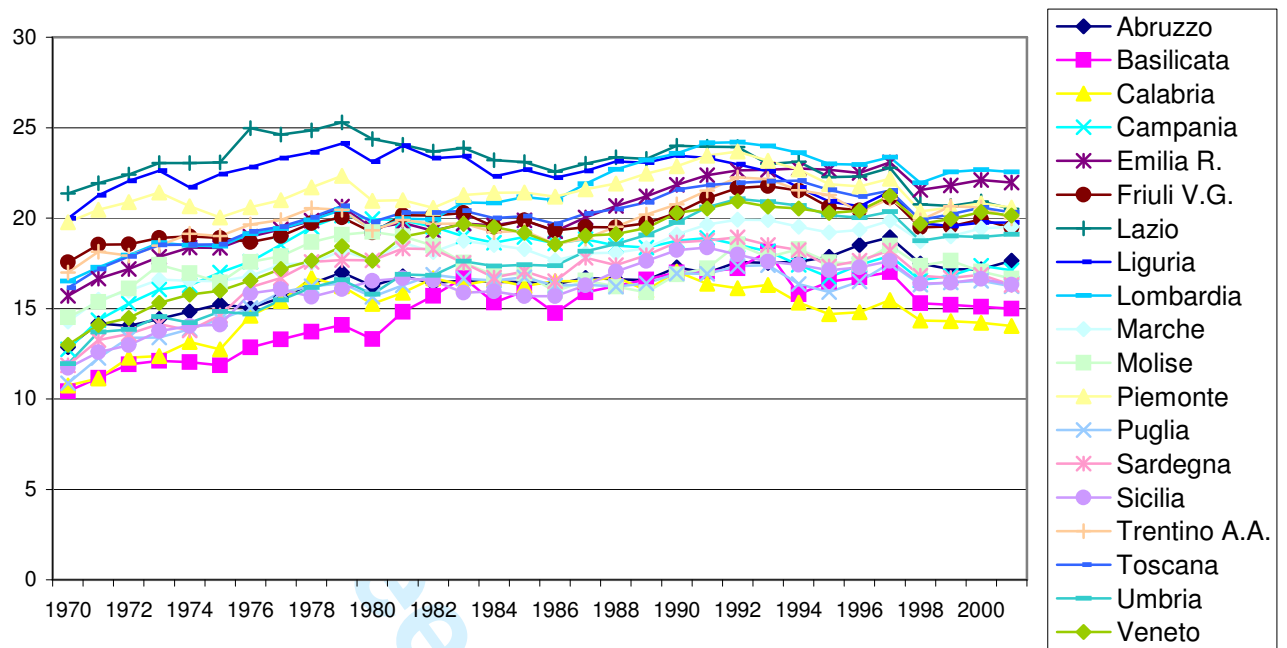


Figure 2: Total Factor Productivity of Italian Regions



Notes

¹ Lagged values or period averages are generally utilised.

² This approach has now evolved into a strand of literature that follows “strictly a time series” approach to test growth convergence (see ISLAM, 2003), in which the economy-specific factors (x_{ik} in equation 1) are omitted under the assumption that they are constant through time and hence they can be incorporated through the fixed effects terms in our panel estimation. Additionally we account for time varying common shocks through SURE analysis and our tests which utilise common factors.

³ The notion of convergence introduced by EVANS and KARRAS, 1996, is essentially based on the claim that different economies converge if, and only if, they share a common stochastic trend.

⁴ MADDALA and WU, 1999, for example, have proposed a test, which is similar to that of IPS, in that it combines the p-values from N independent unit root tests. The major advantage of this test is that it does not require the panel to be balanced, a property that is not required in our case. HADRI, 2000, on the other hand, develops a Lagrange Multiplier test where the test statistic is distributed as standard normal under the null of stationarity.

⁵ The SURE approach has been also adopted recently to estimate panel monetary exchange rate models (see GROEN, 2000) and when testing Purchasing Power Parity (see CHEN, 2004).

⁶ ISLAM, 2001, compares the time series, cross-sectional growth regression, and the cross-sectional growth accounting methodologies and comments that “[...] *the comparison of results reveals both similarities and dissimilarities. While similarities are heartening, dissimilarities should not prove discouraging [...] The TFP, by definition is a complicated social phenomenon. It would rather be surprising if different approaches came out with too similar results*”.

⁷ A full discussion on the theory and the results of this analysis are available from the authors on request.

⁸ As in most of the studies on Italian regions, we have omitted Valle d'Aosta from the sample, because of its modest size in absolute terms.

⁹ This expression is obtained through a simple profit maximisation problem with Cobb-Douglas technology and constant returns to scales. See the Data Appendix for further details on how this parameter has been computed.

¹⁰ Use of the Hausman test to check for heterogeneity is now common in the non-stationary panel literature (see for example the discussion in PESARAN *et al.*, 1999, and the applications in IMBS *et al.*, 2005 and BYRNE and DAVIS, 2005).

¹¹ Hence, this test simply concludes that the mean-reversion (or non-mean-reversion) properties of the series are similar.

¹² The South consists of Basilicata, Calabria, Campania, Molise, Puglia, Sardegna, Sicilia; the Centre-North includes Emilia Romagna, Friuli V.G., Liguria, Lombardia, Piemonte, Trentino A.A., Veneto, Lazio, Marche, Toscana, Umbria, Abruzzo.

¹³ Central regions are Lazio, Marche, Toscana, Umbria, Abruzzo; norther regions are Emilia Romagna, Friuli V.G., Liguria, Lombardia, Piemonte, Trentino A.A., Veneto.

¹⁴ According to ELLIOTT *et al.*, 1996, their testing procedure is more powerful than standard ADF tests in small samples with a large autoregressive parameter. For a sample size of 100 observations, they report rejection frequencies (i.e. the likelihood of correctly rejecting a false null test) of at most 30% with an autoregressive coefficient of 0.95, while the ADF test has a rejection frequency of approximately 10%. Yet, considerable power gains can be obtained by utilising a panel unit root approach compared to the univariate tests. For example, SARNO and TAYLOR, 1998, suggest that the rejection frequency in their test approached 100% as the sample size approaches 100. Even if the time span in our sample is smaller, the cross sectional dimension of the data will give greater power to the panel unit

1
2
3
4
5
6
7
8
9
10
11
12
13
14
15
16
17
18
19
20
21
22
23
24
25
26
27
28
29
30
31
32
33
34
35
36
37
38
39
40
41
42
43
44
45
46
47
48
49
50
51
52
53
54
55
56
57
58
59
60

root tests.

¹⁵ We have also performed standard ADF tests (see DICKEY and FULLER, 1979) along with the more recent univariate tests due to and SAIKKONEN and LÜTKEPOHL, 2002, that examines whether rejection of the null is dependent on the inclusion of mean breaks in the series. The results of these tests are not fundamentally different from the ones obtained through the test of ELLIOT et al., 1996, and hence are not reported in the paper.

¹⁶ However, these tests assume that there is one common factor. BAI and NG's, 2002, information criteria that accounts for potential cross sectional correlation suggests that the most appropriate model is one with no common factors and hence a factor model is not appropriate to deal with cross sectional correlation (These tests are not reported but are available on request by the authors.). This lends further weight to our MADF results which suggest that the feasible SURE analysis is an appropriate alternative, especially with large T , to the factor augmented panel unit root models.