

Social situation and political orientation: students and professors at Giessen University 1918-1945 ; part 1

Chroust, Peter

Veröffentlichungsversion / Published Version

Zeitschriftenartikel / journal article

Zur Verfügung gestellt in Kooperation mit / provided in cooperation with:

GESIS - Leibniz-Institut für Sozialwissenschaften

Empfohlene Zitierung / Suggested Citation:

Chroust, P. (1986). Social situation and political orientation: students and professors at Giessen University 1918-1945 ; part 1. *Historical Social Research*, 11(2), 41-95. <https://doi.org/10.12759/hsr.11.1986.2.41-95>

Nutzungsbedingungen:

Dieser Text wird unter einer CC BY Lizenz (Namensnennung) zur Verfügung gestellt. Nähere Auskünfte zu den CC-Lizenzen finden Sie hier:

<https://creativecommons.org/licenses/by/4.0/deed.de>

Terms of use:

This document is made available under a CC BY Licence (Attribution). For more information see:

<https://creativecommons.org/licenses/by/4.0>

SOCIAL SITUATION AND POLITICAL ORIENTATION -
STUDENTS AND PROFESSORS AT GIESSEN UNIVERSITY 1918-1945

Part One

Peter Chroust(*)

Abstract: Based on an empiric research on **5.760** students from Gießen University (near Frankfurt on Main) the following questions shall be answered: the change in social origin of students, the political potentials among students before and after **1933**, the social profiles of political student organisations, the effects of National Socialist university policy.

In a second analysis all professors of Gießen University between **1918** and **1945** (N = **299**) were researched under the focuses of institutional changes, social background and political orientation. Some selected results from this study will be presented in part two.

i. INTRODUCTION

i.i. Preface

In my dissertation on "Gießen University and Fascism. Students and Professors 1918-1945" (i) I carried out - besides an analysis of archival documents and publications - a quantitative study of students and professors in that period. Both groups were analyzed by different methods, instruments and substantive focuses. In the following contribution the design and some selected results of the study in the students of Gießen university will be presented.

1.2 Remarks on Socio-Political Background

First of all we have to consider that Gießen (about **40** miles in the north of Frankfurt/Main) was the second smallest university in the period under study - only Greifswald university was smaller.(3) Nevertheless Gießen was the only university of the "Volksstaat Hessen" (People's state Hesse, also called "Hessen-Darmstadt") other Hessian universities like Marburg and Frankfurt/M. in that time belonged to the Prussian province "Hessen-Nassau". The administrative borders of that time subdivided the "Volksstaat Hessen", into three provinces: "Starkenbourg", with the state capital Darmstadt, "Rhein Hessen" with its capital Mainz and "Oberhessen" with its capital Gießen. In opposition to the highly industrialized Rhein-Main area, which almost completely belonged to the neighbouring Prussian province Hessen-Nassau, the "Volksstaat Hessen" was a predominantly agrarian and provincial region - only Darmstadt, Offenbach and Mainz were considerably industrialized. So e.g. in **1925** **37.3%** of all inhabitants of "Volksstaat Hessen" lived in communities with less than **2.000** inhabitants and even **56.5%** in communities with less than **5.000** inhabitants (**1933: 34.8%** respectively **53.2%**).(4) The greatest proportion of the secondary sector could be found in communities between **5.000** and **10.000** inhabitants (**50.0%**)(5), which underlines the predominance of middle class industrial and handicraft enterprises.

(*) Address all communications to: Peter Chroust, An der Walkmühle 6 B,
D 6450 Hanau 1, Federal Republik of Germany

As it is known from several investigations(ó) also religious confession is an important variable in political behavior of that pweriod. In "Volksstaat Hessen" 1925 65.8% (y) of the inhabitants belonged to the Protestant church. Corresponding to that socio-cultural structure a certain political and electoral behaviour can be expected. In fact, the NSDAP gained - especially at rural communities and in small towns with predominance of handicraftsmen, employees and civil servants - in "Volksstaat Hessen" enormous electoral success before the "seizure of power".(8) In Gießen the NSDAP obtained in the general election of July 1932 49.0%, in Gießen county (Landkreis) 55.0% of the votes.(9)

Finally we also have to consider the socio-political context of German universities during that period:

- expansion, diversification and social opening of higher education(10), simultaneously public "deficit-spending" and pauperization of students and academic profession in Weimar Republic 1),
- drastic abbreviations, selections and economic-political instrumentalization during National Socialism.(12) Gießen university as a small province university shows all of these phenomena, but the risk of being dissolved at a higher degree.(13)

2. STUDENTS AT GIESSEN UNIVERSITY 1918-1945

2.1 Data Base

Fortunately the complete student card-index of Gießen university o winter semester (ws) 1918/19 to winter semester 1944/45 is preserved. The different political conditions also lead to different systems in recording student data: during the period of Weimar Republic only a relatively small set of data was recorded (cf. fig. 1):

- immatriculation/exmatriculation at Gießen university
- subject of studies
- confession
- date and place of birth
- nationality
- father's profession
- family's and student's place of residence
- education,

From summer semester (ss) 1934 the National Socialist administration created a new, very detailed student card-index (cf.fig. 2), recording additionally to the data set above:

- married since?
- number of children
- number of brothers or sisters (their profession/study)
- a-level annual set ("Abiturientenjahrgang")
- genealogical certificate ("Ahnennachweis", to prove "Arian" or "Non-Arian" descent)
- studies at other universities before (name of university, date of immatriculation/exmatriculation)
- membership at student council on faculty level ("Fachschaft")
- membership at NSDStB (National Socialist German Student Union, date of entrance, members' no., function)
- membership at student organisation ("Korporation", date of entrance, function)

- membership at life-comradeship ("Wohnkameradschaft", National Socialist successor organisation of "Korporationen" and "Burschenschaften"; name of comradeship, date of entrance, function)
- membership at NSDAP (National Socialist German Workers' Party), SA (Storm-troopers), SS ("Safe-squadron"), HJ (Hitler Youth), BdM (League of German Girls): date of entrance, members' no., function
- membership at paramilitary associations ("Wehrverbänden")
- membership at sporting clubs
- owner of Reichs Youth badge ("Reichsjugendabzeichen"), of Reichs Sport badge ("Reichssportabzeichen"), of SA-Sport badge ("SA-Sportabzeichen"): bronze, silver, gold
- membership at professional organisations
- knowledge in shorthand and type writing
- ability of poster-writing and drawing
- knowledge in foreign languages
- ability of playing music instruments
- training in first aid
- owner of driver's licence (land, naval, aero)
- owner of a vehicle at semester residence
- participation in universitarian sport, ~~paramilitary sport~~ ("Geländesport"), labour service ("Arbeitsdienst"), in students' self-government ("Studentenschaft")
- punishment
- result of medical examination
- passed universitarian examinations
- practical activities before/during university studies.

This data set was yet different for female and foreign students (foreign students were additionally diversified into students of German and Non-German ancestry). Later the rubric "father's profession" was further sub-classified into academic education ("Hochschulbildung") and professional status ("Berufsstand"): self-employed or salary-dependent.

2.2. Data Collection

From these two card indexes (ws 1918/19 -ws 1933/34 and ss 1934 - ws 1944/45) I took a systematic random-sample of 33.3%. The following variables were transferred on computer-readable forms - altogether 5.169 cases:

- identification-no.
- sex
- subject
- year of birth
- place of birth:
 - a) state of "Deutsches Reich" (in borders at decr.31., 1937; e.g. Prussia, Bavaria, Volksstaat Hessen)(14) or foreign state
 - b) only for German students:
 - community's size, diversified in 5 classes (15):
 - less than 2.000 inhabitants
 - 2.000 to 4.999 "
 - 5.000 to 19.999 "
 - 20.000 to 99.999 "
 - 100.000 and more "
- nationality
- the following data were collected for German students only:
- confession

- education
- first/second immatriculation/exmatriculation at Gießen
- from ws **1939/40**: soldiers commanded to study
- actual residence of parents:
 - a) identical with student's place of birth?
 - if not identical:
 - b) state of "Deutsches Reich" (see above)
 - c) community's size, diversified in 5 grades (see above)
- student's residence during semester at parents' residence?
- father's profession:
 - a) profession according to classification (cf. fig. i4)
 - b) academician?
 - c) self-employed?
- number of brothers or sisters
- membership and date of entrance at:
 - NSDAP
 - SA
 - SS
 - HJ/BdM
 - National Socialist comradeship ("Kameradschaft")
 - Korporation, Burschenschaft etc.

Thus a "social profil" of Gießen students was obtained, which allowed - thanks to its large quantity - the construction of various sub-groups with acceptable confidence intervalls (e.g. female medicine students before/after **1933**)-

In a second step all data of politically engaged students were gathered, in case they were not already recorded during the first collection of data. As being politically engaged were defined the following students:

1. members of political student organisations:
 - a) NSDStB (National Socialist Student Union; N = **432** before **1933**, N = **471** after **1933**)
 - b) ANST (Association of National Socialist Female Students; N = **93**, all after **1933**)
 - c) Nationale Studentengruppe (close to "Deutschnationale Volkspartei", monarchistic orientated, belonged to the "Harzburger Front" under leadership of NSDAP; N = **7**, all before **1933**)
 - d) Stahlhelm-Studentengruppe (close to "Stahlhelm" (steel helmet) political organisation of former "Frontsoldaten", which also belonged to the "Harzburger Front"; N = **55**, all before **1933**)
 - e) Zentrums-Studentengruppe (close to catholic Zentrum-party which belonged to "Weimarer Koalition", N = **19**, all before **1933**)
 - f) DVP-Studentengruppe (close to "Deutsche Volkspartei", during the first post-war years anti-republican, under leadership of Gustav STRESEMANN gradual pro-republican, N = **14**, all before **1933**)
 - g) DDP-Studentengruppe (close to "Deutsche Demokratische Partei", which also belonged to "Weimar coalition", left liberal, N = **13**, all before **1933**)
 - h) Republikanische Studentengruppe (N = **14**, all before **1933**)
 - i) Sozialistische Studentengruppe (successor organisation of "Republikanische Studentengruppe"; N = **26**, all before **1933**)
 - j) Rote Studentengruppe (splitting from "Sozialistische Studentengruppe", close to KPD (Communist Party of Germany); N = **13**, all before **1933**).
2. members of Allgemeiner Studentenausschuß (ASTa; student council; N = **132** before **1933** and **34** after **1933**)

- 3- members of National Socialist "Kameradschaften" (comradships; N = 63, all after 1933)
4. members of NSDAP (N = 156 before 1933, N = 499 after 1933)
5. members of SA (stormtroopers; N = 337 before 1933, N = 478 after 1933)
6. members of SS ("Safe squadron", N = 40 of "Allgemeine SS" and N = 34 of "Waffen-SS")
7. sympathisants or members of "Bekennende Kirche" (Confessional church, an opponent current in Protestant church, who collectively refused e.g. to pass theological examinations under National Socialist presidency. Most famous representative: Martin NIEMÖLLER. N = 12, all after 1933).

These dates were recorded on the basis of membership files (group 1), personal files of Gießen university (group 2, 3), on the basis of the student card index (group i.a. 4, 5), and university or NSDAP records (group 3, 6). Members of HJ and BdM also were examined, but will not be presented in this contribution. Because of quasi obligation for membership these party organisations do not allow conclusions on - more or less - free political motivation and behaviour.

By anonymization of all informations the needs of data protection were fulfilled. After recording the data sheets were processed by a data entry machine, type KAISER omr 40. Next step was formatting the data with SPSS: VAR LABELS, VALUE LABELS and RECODE. SPSS also served to create crosstabs and - with some difficulties - to construct time-series. For more perceptual presentation of selected variables I also intended printing of plotter-diagrams with FORTRAN. Unfortunately this task could not be realized - the plotter produced mixed right and wrong diagrams without any error system recognizable.(16) So I was forced to draw the graphics myself.

2.3 Some selected results

Before presenting some results, the central research hypotheses shall be formulated. Of special interest in this case study were the following considerations:

1. Particularly during the Weimar republic the social background of German students changed: the share of students of traditional (academic) bourgeoisie diminished while simultaneously "new" student strata increased of coming from the (non academic) lower middle-class. My case study was designed to research if such a small province university like Gießen participated in that secular - trend.(17)
2. The period of economic crises lead to a separation between education and possession (Bildung und Besitz)(18) which caused particularly among the "new" student strata a student movement from about 1925 on.(19) This process of a new politicization can be interpreted beside its economic roots - as an attempt to establish a new population at German universities. For example Wilhelm Tempel, one of the first NSDStB-leaders, reported in a letter that "almost 90% of the early members were recruited "from workers- and middle-class families".(20)
The trend to a politicization of sciences, to participation in universal institutions, to living in politic-orientated communities could not be realized within the traditional "fraternities" (Korporationen)

with their highly ritualized life-style. Severing this purpose of establishing a new population completely new forms of political publicity at universities came into existence: party-orientated student organizations[^], election campaigns for the student councils (Allgemeiner Studentenausschuß, Asta), public debates, pamphlets etc. One aim of investigating the Gießen study was to find out, from which social strata these political potentials (also after 1933) came from.

3. Further the social differences between left and right orientated students were to be examined statistically.(22) The reasons for that enormous right-orientation also among Gießen students(23) are dealt with in more detail in the non-empirical parts of my dissertation.
4. Finally we included to investigate, in how far the National Socialist education policy after 1933 realized the promise to advance each child regardless of its social original - if it was only talented.(24) For a specific social segment the continuity of elites (after 1933) or the influence of short-termed control mechanisms on a long-termed process should be verified.

2.3.1 Development of immatriculations 1918-1945 (fig. 4 u. 5)

The enormous fluctuation of immatriculated students at Gießen university follows more or less the general trends in Germany: the share of Gießen students on German (university) students swings before 1933 between 1.88% (ss 1929) and 2.65% (ss 1919) and diminishes gradually until 0.94% in ss 1941.(25) The average shares of Gießen university amount 2.21% before ss 1933 and 1.57% after ss 1933.(26)

The first drastic reduction of immatriculated students between ss 1919 and ss 1926/27 is caused by different facts:

- during the first phase (until about ss 1923) thousands of returned soldiers finished their studies and left university after short time.(27)
- the climax of inflation in autumn 1923 and the following pauperization, of lower middle-class families lead to a temporal retrogression of students from these "new" strata.(28)

The increase of Gießen student figures after ss 1927 corresponds to the relative economic stabilization in Germany between 1924 and 1928.(29) This trend continued (not only at Gießen university) even during the economic crisis from 1928 on - in spite of miserable social conditions for the greater part of students and in spite of bad job opportunities after having finished their studies.(30) One explanation for this different behaviour - compared to the period of economic crisis on 1923 - was the new function of university studies as a "refuge".(31)

The rapid decline of Gießen student figures after ss 1933 relates to National Socialist education policy:

- drastic reduction of a-level examinations by decreed quota(32),
- aggravated entrance to university study by obligation to "Reichsarbeitsdienst" (26.6.1935) and military service (for male students) 1935,
- exclusion of Jewish students[^],
- exclusion of "marxist" (SPD or KPD) orientated students(34),
- maximum figures for university students[^] and each university,
- displacement of female students from universities (until ss 1939X36),
- intensification of studies to sustain study duration.(37)

The declining share of Gießen university (1.57% after 1933, 2.21% before 1933) is interesting in face of Nazi's propaganda to prefer small, "healthy"

provincial universities instead of "degenerated" large city universities^), which - in this ideology - represented the contempted "Asphalt-Kultur" of "Weimar system". Because of - after 1933 only renewed - plans to reduce Gießen university or to completely close it(39), conflicts between Gießen university and regional NSDAP on one side and centralized administration on the other side were unavoidable.

Representative may be the grievance of Reichsstathalter and Gauleiter Sprenger to the minister of science Bernhard Rust, on three cases of removed professors (Prof. Hermann Hoffmann, Prof. Hellmut Becher, Prof. Erich von Guttenberg).(40)

The rise of student figures after ws 1939/40 depends on the function of Gießen university during World War II:

- preference and extension of medicine (particular improvement of soldiers and members of Waffen-SS)
- admission of female students (mostly for medicine study), contrary to the displacement policy before 1940 (cf. fig. 5)
- This function was accompanied by general measures(41);
- drastic reduction of study subjects which were not regarded as necessary for war,
- acceleration of studies by a temporary establishing of trimesters (1940/41)
- obligated engagement ("Einsatz") also during semesters in factories, on farms or in civil service.

2.3.3 Study Subjects 1918-1945 (fig. 6)

Distinguishing subjects between tendential growing resp. diminishing shares, one can observe the following trends:

- male students particularly chose during the period investigated subjects like medicine, law (before 1933), veterinary science (after 1933), grammar school teacher (before 1933) agriculture and political science (before 1933)
- female students especially preferred grammar school teacher and medicine.

From which social strata did these students come?

An analysis of their fathers' professions shows the following results:

a) male students	before 1933	after 1933
medicine:	higher civ.servant (14.7%) physician/apoth.(14.3%) teacher (14.0%) merchant (10.7%) low/inter med.civ.serv. N = 523 (9.6%)	teacher (18.2%) higher civ.serv.(15.3%) physician (n.o%)(6) merchant (9.4%) low/inter m.civ.serv. N = 544 (8.6%)
law:	higher civ.serv.(17.1%) teacher (15.1%) merchant (13.4%) Low/inter md.civ.serv. N = 636 (12.3%)	(N = 162)

	before 1933	after 1933
vet.med.:	farmer (21.9%)	farmer (27.7%)
	low/interm.civ.serv. (13.5)	teacher (14.7%)
	higher civ.serv.(11.3%)	higher civ.serv. (8.7%)
	merchant (11.3%)	low/interm.civ.serv. (8.2 %)
	N = 274	N = 231
grammar school teacher:	low/interm.civ.serv. (16.8%)	-
	teacher (16,1%)	
	craftsman (11.4%)	
	merchant (10.8%)	
	farmer (10.1%)	
	N = 316	(N = 72)
agriculture:	farmer (25.1%)	-
	low/interm.civ.serv.(11.1%)	
	higher civ.serv. (10.0%)	
	teacher (9.2%)	
	N = 271	(N = 62)
politic/eco.sciences:	merchant (18.9%)	-
	low/interm.civ.serv.(12.5%)	
	teacher (10.0%)	
	entrepreneur (8.9%)	
	N = 281	(N = 58)
b) female students		
grammar school: teacher	teacher (17.,9%)	teacher (23.7%)
	low/interm.civ.serv. (14.3%)	higher civ.serv.d 1.9%)
	merchant (11.9%)	low/interm.civ.serv. (8.5%)
	higher civ.serv. (10.7%)	low/inter m.employee (8.5%)
	N = 84	N = 59
medicine:	physician (16.4%)	teacher (19.3%)
	teacher (16.4%)	physician (18.5%)
	higher civ.serv.(15.1%)	higher civ.serv.(16.3%)
	merchant (9.6%)	low/interm.civ.serv. (10.4%)
	entrepreneur (9.6%)	low/interm.employee (9.6%)
	N = 73	N = 135

Striking about these figures is the extreme decline of some study subjects among male students after 1933: law (from 636 students before 1933 to 162 after 1933), grammar school teacher (316 to 72), agriculture (271 to 62), political/economic sciences (281 to 58). Even regarding the fact, that the National Socialist seize of power divides the time continuum of this study into two asymmetric parts (31 semesters before 1933, 24 semesters after 1933)» the decline of this subjects is evident.

Quite in contrast to the Nazi ideology of "Blut und Boden", also a study subject like agriculture was reduced - the policy of "rationalization" and concentration in German universities prevailed.

Worth mentioning is the effect of these reductions: particularly concerned were subjects with high portions of children from lower middle-class (see above), the "new student strata". To clarify if these reductions resulted in a re-establishing of traditional elites in universities[^]) may serve another variable: among the study subjects concerned the share university trained fathers:

a) male students	before 1933	after 1933
medicine:	32.6 %	31.1 %
law:	24.7 %	-
vet.med.:	18.7 %	17.6 %
gram.school teacher:	11.3 %	-
agriculture:	23.0 %	-
polit./econ.sciences	16.0 %	-
average share among male Gießen students	21.7 %	23.2 %
b) female students		
gram.school teacher:	35.7 %	39.2 %
medicine:	52.3 %	51.6 %
average share among female Gießen students	37.3 %	46.2 %

This comparison yields a rather stable proportion of academician descent among male students on a relative low level and an increase on higher level among female students. But as it was shown, the general proportion among male students covers the changes (decline) of several subjects. On the other hand the evidently growing proportion of university trained fathers of female students results particularly from the expansion of medicine after '939- That means that a substantial interpretation of the re-establishing of older elites in universities under National Socialist rule needs very differentiated analyses, e.g. of study subjects before/after 1939, share of female students, provincial or large city university. Based on the results presented the interpretation as a selective and temporary re-establishing of traditional elites seems to be more justified (cf. fig. 18).

2.3.4 Regional Descent (fig. 7 and 8)

The predominance of students (male and female) from the "Volksstaat Hessen" is evident - in spite of several fluctuations. The increase of male students from the "Volksstaat Hessen" during economic crisis after about 1925 may result from financial problems of their families and less opportunities for "Werkarbeit" during semester. The decline of this student group after 1933 (interrupted by a phase of re-provincialization between 1937 and 1939) was caused by the National Socialist policy of centralization in the educational sector. Disregarding the general predominance of the "Volksstaat Hessen" there are differences between male and female students dependent on community's size (place of birth): while male students from this region come overwhelmingly from villages (45.9 % from communities less than 5.000 inhabitants before 1933), female students often come from middle sized towns (45.8 % from communities between 20.000 and 100.000 inhabitants before 1933). Under German fascism the share of male students (born in Hessen-Darmstadt) from these villages diminishes to 38.4% to the favour of greater cities: the quota of communities between 20.000 and 100.000 increases from 31.1% to

36.5%. This trend also continued among female students: the portion of communities between **20.000** and **100.000** grows to **55.0%**.

2.3.5 Confession (fig. 9)

Because of the high quota of regional recruitment too the share of Protestant students is markedly high (for the confessional structure of the "Volksstaat Hessen" see chapter 1.2). The average share of Protestants at German universities amounts e.g. in ss 1930 to **66.9 %**.(43) The figures of Jewish students will be interpreted in chapter 2.3.12.

2.3.6 Education (fig. 10)

The quota of male students with Gymnasium education tended to diminish to the favour of the Realgymnasium (reformed secondary school), among female students the share of "humanistic" education is evidently smaller. The high proportion of other education among female students results in most cases from additional studies of primary school teachers (qualification for Gymnasium). A crosstabulation between school examination and study subject confirms more or less the results presented in chapter 2.3.3:

the quota of students with non-humanistic education among growing subjects amounts in

a) male students	before 1933	after 1933
medicine	49.9 %	39.1 %
law	50.3 %	45.7 %
vet.med.	39.5 %	34.9 %
gram.school teacher	28.1 %	30.1 %
agriculture	31.4 %	18.0 %
politic/econ. sciences	36.1 %	27.8 %

b) female students

gram.school teacher	17.9 %	18.8 %
medicine	21.6 %	17.9 %

Education crosstabulated with father's profession shows the following results:

fathers's profession among ex-pupils in a 'Gymnasium'

a) male students	before 1933	after 1933
higher civ.servant	15.9 %	15.1 %
teacher	15.0 %	21.2 %
low/inter m.civ.serv.	10.4 %	9.6 %
merchant	9.6 %	5.5 %
farmer	8.8 %	10.4 %
physician/apothecary	8.1 % N=i277	5.1 % N=490

b) female students

teacher	19.1 %	25.4 %
entrepreneur	12.8 %	10.2 %

	before 1933	after 1933
manager (salary depend.)	12.8 %	3.4 %
farmer	10.6 %	3.4 %
higher civ.servant	8.5 % N=47	8.5 % N=59

2.3.7 "Study Mobility" (fig. n)

The declining quota of (male) students who came from other universities to Gießen results from different reasons:

1918 - 1923 return of soldiers who finished their pre-war studies

1923 - 1933 consequences of economic crisis and desolate situation of students during Weimar Republic

*1933 ~ 1939 compulsion to stay during the first semesters at the same university

The increase of those students who came from another university after **1939** depends on centralization and predominance of soldier students (esp. medicine). On the part of female **students** the almost continuous higher share of this student group may result from their "more academic descent" (cf. chapter 2.3.3) and a greater **proportion** of students coming from middle-towns (cf. chapter 2.3.4).

2.3.8 Regional Mobility (fig. 12 - fig. 14)

Presumably depending on the different social **background** (higher share of academic fathers, often born in middle-towns) regional mobility in female students' families is higher than in male students' families. Further investigations (fig. 13 and 14) showed that parents of female students "emigrate" somewhat more to regions out of the "Volksstaat Hessen", esp. to other Prussian provinces and to the Prussian province Hessen-Nassau. Destinations preferred are cities between **20.000** and **100.000** inhabitants (share about **35 %** among male students, about **45 %** among female students).

2.3.9 Student's Residence during Semester at Parents' Residence (fig. 15)

This variable should give information about "social cohesion" between students and their families: the share of students who live also during semester in their families is higher among women than among men. Probably traditional expectations of role-conform behaviour are responsible for this result. Regarding the great share of male students coming from villages (**45.9%** from communities less than **5.000** inhabitants before **1933**, cf. chapter 2.3.4) this result means that many male students lived separated from their families although they lived relative near to Gießen (cf. fig. 12).

2.3.10 Father's Profession (fig. 16 - fig. 19)

The cumulated social profile of Gießen students is characterized by following trends:

a) male students before **1933**

particularly came from families of lower/intermediate civil servants, higher civil servants, teachers, merchants and farmers, that means a high representation of lower middle-class children (lower/intermediate civil

servants, teachers, merchants and farmers are summed - beside others like craftsmen - to this social category; cf. fig. 17).

after 1933

the proportion of children of lower/intermediate civil servants and of merchants slightly diminishes while the position of children of teachers and low/intermediate employees increases. This development indicates a redistribution within the same social strata. A process of re-academization or return of traditional elites cannot be inferred from these figures (cf. fig. 18).

b) female students before 1933

approximately show the same social background like their male colleagues: they were predominantly recruited from families of teachers, higher civil servants, merchants and low/intermediate civil servants. The share of daughters from teachers' families is still greater than among male students, the share of daughters from craftsmen families is evidently smaller.

after 1933

the rate of children of teachers and higher civil servants rests relatively stable, the proportion of children from low/intermediate employees and physicians grows (the latter depends on the high self-recruitment rate among physicians which is relevant during expansion of medicine after 1939). Relative decline is to be mentioned for children from merchants and low/intermediate civil servants.

The social background of Gießen students according to status-groups shows among male students an almost continuous increase of children from lower middle-class which is interrupted only after 1933.

In the same pattern the proportion of children from upper middle-class after 1933 is growing - particularly during World War II (cf. fig. 17). Among female students an increase of children from upper middle-class can be stated which is interrupted after 1939 (cf. fig. 17). Both developments (for male and female students) correspond with similar fluctuations of descent from academic families:

Among male students the proportion of non-academic origin is continuously growing until 1933 and is interrupted by the National Socialist seizure of power. Among female students the proportion of university trained fathers falls until 1939 and grows during war (cf. fig. 18). That means that female students before 1939 often originated from non-academic upper middle-class families.

The variable "father's profession: self-employed?" shows the following trends:

a) male students

Rather in the same pattern as the increase of children from lower middle-class families the proportion of self-employed fathers diminishes until 1933 and grows under National Socialist rule (cf. fig. 19).

b) female students

Because of extreme oscillations an interpretation is very different. Nevertheless one can observe four different phases: from 1918 to 1925 a declining quota of daughters of self-employed fathers, increase between 1925 and 1933, new decline from 1933 to 1940 and new increase from 1940 to 1942. The first decline and increase (1918-1933) may depend

on general economic development, the second change (1933-1942) with its internal conversions (about 1938) needs further investigations (cf. fig.19).

2.3.11 Number of Brothers and Sisters (fig. 20)

The examination of this variable should provide evidence of the real effects of National Socialist university policy which claimed to promote underprivileged children (cf. hypothesis 4 at the preface of this chapter). Under the condition that the number of brothers and sisters is an indication of less privileged status in National Socialist Germany we can interpret the time-series of male students as follows:

- 2 children families: increase from 1933 to 1937, after a reduction resp. stagnation
- 3 children families: decrease until 1939, during World War II stabilisation on some higher level
- 4 children families: increase to 1939, then decrease
- 5 children families: increase to 1939, then decrease (and more)

Disregarding the specific situation of 1939, male Gießen students predominantly came from 2 and 3 children families. Considering that students from worker families under fascist rule continued to be underrepresented (cf. fig. 16 and 17) only middle class families could profit from this development. (For further effects of National Socialist education policy cf. fig. 6,10,16-19).

2.3.12 Jewish Students (tab. 21 - tab. 24)

Students with Jewish confession prefer law, medicine and political/economic sciences, that means study subjects leading to "free" professions with probably low share of careers in civil service. As mentioned before (cf. chapter 2.3.3) these study subjects expanded before 1933. Female students studied predominantly classic philology, German literature and history. An analysis of father's profession shows the following results: A high proportion of children of merchants and entrepreneurs (male and female students), among female students also a remarkably high proportion of physicians/pharmacists (cf. fig. 22). Correspondingly the portion of students originating from academic families is relatively small among male students: 8.9%; among female students the quota amounts 33.3% (presumably influenced by a higher portion of physicians). Finally the portion of self-employed fathers is also high: 91.3% among male students and 91.7% among female students.

2.3.13 Members of Political Student Organisations before 1933 (fig.25, 28 and 29)

A comparison between students in left-wing and right-wing organisations during Weimar Republic shows the following trends:

- a) left-wing and democratic orientated students
 - children of low/intermediate civil servants, merchants, teachers, higher civil servants, craftsmen, farmers and skilled workers

- b) right-wing students
children of low/intermediate civil servants, higher civil servants,
teachers, farmers, craftsmen and merchants.

In both camps students of "new social strata" are highly represented (cf. chapter 2.3.10). Compared to this social composition the proportion of fathers with university education is relatively small (about 12 %, cf. fig. 28). The quota of self-employed fathers is higher than among other students (cf. fig. 29 resp. fig. 19).

2.3.14 Members of Asta, Korporationen and NS-"Kameradschaften" (fig. 26, 30 and 31)

Members of these organisations particularly recruited from

- a) before 1933
families of low/intermediate civil servants, teachers, farmers, higher
civil servants, craftsmen and merchants
- b) after 1933
families of low/intermediate civil servants, higher civil servants, tea-
chers, farmers and physicians/pharmacists; the portion of children of
craftsmen and merchants decreases while the professions increase as men-
tioned above (cf. fig. 26)

Before 1933 among members of the "Asta" sons of university trained fathers were three times more frequent than among members of the Korporationen (cf. fig. 30). After 1933 this portion is evidently smaller among Asta-members and increasing among corporated students and the newly founded National Socialist "Kameradschaften" (cf. fig. 30).

Before 1933 we find self-employed fathers among Asta-members and Korporationen on a level approximately corresponding to other students. After 1933 among Asta-members this share declines while this quota among corporated students rests stable; the share of self-employed fathers among students of "Kameradschaften" amounts about 32% (somewhat lower than among students of Korporationen, cf. fig. 31).

These facts refer to some interesting developments:

- at least at Gießen university Korporationen before 1933 became more and more organisations of children of non-academic families ("new student strata"). In spite of a high membership level (e.g. in ss 1932 66.9% of Gießen students were corporated) "revolutionary" National Socialism was more attractive to these social strata (cf. chapter 2.3.15).
- after 1933 Korporationen seem to become a "refuge" for children of university trained fathers, but presumably also National Socialist successor organisations ("Kameradschaften") had this function.
- after 1933 among politically active students (members of Asta) students from "new social strata" (non-academic, salary-dependent fathers) are more highly represented than before 1933.

2.3.15 Members of Fascist Organisations (fig. 27, 32 and 33X44)

Social origin of these students is composed as following:

a) before 1933

predominantly children of low/intermediate civil servants, teachers, craftsmen, higher civil servants and farmers

b) after 1933

particularly children of teachers, higher civil servants, low/intermediate civil servants, farmers and physicians/pharmacists

The relatively low portion of university trained fathers (about 12%) before '933 grows remarkably after 1933 (about 25%, cf. fig. 32). The share of children of self-employed fathers rests relatively stable before and after 1933 (about 35%, cf. fig. 33).

A comparison between different fascist organisations shows the following results:

a) before 1933

NSDAP, NSDStB and SA had very similar social profiles: predominance of children of low/intermediate civil servants, teachers, craftsmen, higher civil servants (among NSDStB-members higher than among NSDAP-members) farmers (among SA-members higher share than among NSDAP and NSDStB) and merchants (cf. fig. 2).

b) after 1933

drastic decrease of children of craftsmen and of low/intermediate civil servants (highest losses among NSDAP-members). Profiteer of this development were children of teachers, higher civil servants and physicians/pharmacists (cf. fig. 27).

Members of the "Arbeitsgemeinschaft nationalsozialistischer Studentinnen" (ANSt, at Gießen founded 1933) particularly originated from families of teachers, higher civil servants, merchants, physicians and low/intermediate civil servants (cf. fig. 27). Members of SS after 1933 show a distinct tendency to be recruited from traditional elites: higher civil servants and physicians, (cf. fig. 27).

Before 1933 the portion of university trained fathers is relatively similar among members of NSDStB (highest rate), NSDAP and SA (lowest rate), generally the rates correspond to other Gießen students (about 15% between 1930 and '933j cf. fig- '8). After 1933 the portion of university trained fathers reached the highest rate among SS and NSDAP-members, while NSDStB and SA-members counted less children of academic descent (cf. fig. 32). The same portion of university trained fathers was to be found among (female) ANSt-members (cf. fig. 32). Before 1933 children of self-employed fathers were as frequent among members of NSDAP, NSDStB and SA as among other Gießen students. Compared with the increasing portion of children of self-employed fathers after 1933, the rates among NSDAP, NSDStB, SA and SS are slightly under average. Only members of ANSt had a rate according to the general mean (cf. fig. 33 and 19).

2.3.16 Some Comparative Social Data for Members of Political Student Organisations 1918-1945

In addition to the variable "father's profession" some comparative results shall be reported:

- a) study subjects
remarkable differences between left- and right-wing students: predominance of future grammar-school teachers among left-wing students, prevailing medicine and veterinarian medicine among right-wing students, high proportion of law-students in both camps. That means: high shares of "growing" subjects in both "camps".
- b) regional origin
the proportion coming from the "Volksstaat Hessen" equals other Gießen students. Among students in National-socialist organizations a higher share of communities with less than 5.000 inhabitants can be observed, whereas among members of other organizations no certain tendencies prevail.
- c) **confession**
evident predominance of Protestant students in right-wing organisations, mixed composition (also Jewish students) in left-wing organisations.
- d) education
among members of rightist and leftist organisations the proportion of ancient pupils in a "gymnasium" was lesser than among other students.
- e) study mobility
members of fascist organisations show less study mobility than members of organisations of the left.
- f) regional mobility
there were no significant differences in parents regional mobility between members and non-members of political organizations.
- g) student's **residence during semester at parents' residence before 1933**
members of political organizations live more often with their parents than other students of Gießen university.

2.4 Resume

Based on the data presented here we can state a growing share of students from "new social strata" also at Gießen university between 1918 and 1933. These strata were also highly represented among students engaged in political organisations during the same period. Further the different effects of National Socialist university policy could be shown: the increase of students originating from upper middle-class families after 1933 and particularly after 1939, the increase of children of self-employed fathers after 1933 etc. The social composition of male and female students developed in different directions before and after 1933 (share of upper middle-class children, different cesures). Finally the problem of the re-establishment of "traditional elites" under National Socialist rule should be examined more deeply, considering different study subjects before/after 1939, differences between male and female students, provincial and large city universities.

Finally some methodological problems shall be mentioned:

- the problem of inferences from social to political background and behaviour. That means: not the students investigated were civil servants, physicians or craftsmen, but their fathers.
- the problem of inferences from membership in political organisations, in Asta or corporations to political attitudes and behaviour. That means: is membership in a certain organisation a valid indicator of a certain state of consciousness? For example the biographical meaning of such a membership for an individual life cannot be recorded by statistic measures.
- nevertheless statistic procedures disclose unknown sectors of social reality and show new connections. The most successful way of handling the problems of inference and validity seems to combine statistical methods with social and biographic research - in a dialectic between individual analyses(45) and collective biographies.(46)

FOOTNOTES

- 1 The dissertation - supervised by Prof.Dr. Heinz-Josef Varain, Gießen University, Department of Political Sciences - will be finished in its empirical parts in 1986.
- 2 The following archives were consulted:
 - Archive of Gießen university (records of institutes, students' card-index)
 - Archive of the Gießen university's president (records of administrations, professors and students)
 - Community Archive Gießen (relations between university and town, daily newspapers)
 - Hessian Main State Archive (Hessisches Hauptstaatsarchiv) Wiesbaden (acts of NSDAP Gießen and "Gau-Hessen-Nassau", GESTAPO, denazification)
 - Hessian State Archive Darmstadt (records of former department for education destroyed by bombing-raid)
 - Hessian State Archive Marburg (documents on closing and re-opening of Gießen University; Marburg was residence of American University officer for Greater Hesse after 1945, Edward Y. Hartshorne)
 - Archive of Hessian Ministry for Education, Wiesbaden (records on denazification, closing and re-opening of Gießen university)
 - Archive of former Reichs students' leadership (Reichsstudentenführung) and National Socialist German Student Union (NSDStB), Würzburg
 - Archive of Institute for University Science (Institut für Hochschulkunde), Würzburg (documents on student council and other political groups at Gießen university)
 - Federal Archive (Bundesarchiv) Koblenz (records and documents on corporations and students' policy, on science policy after 1933)
 - Berlin Document Center (personal files of NSDAP members from Gießen university).

Thanks to all employees of these institutions who supported me in my research!

- 3 E.g. in summer semester 1933 at Gießen university 1.996 students were immatriculated, at Frankfurt/Main 2.724, at Berlin 10.017, at Greifswald 1.801 students (fig. from Gießen university cf. Vorlesungsverzeichnis. Personenbestand der Hessischen Ludwigs-Universität zu Gießen WS 1933/34, p. 44; other figures cf. Deutsche Hochschulstatistik, vol. 12, Winterhalbjahr 1933/34, Berlin 1934, p. 20).
- 4 Hessisches Landesstatistisches Amt (ed.): Hessen in Wort und Zahl. Kurzgefaßte Landeskunde aufgrund der amtlichen Statistik, Darmstadt 1936, p. 9.
- 5 op.cit., p. 31.
- 6 cf. Milatz, Alfred: Wähler und Wahlen in der Weimarer Republik. Bonn 1966 (= Schriften der Bundeszentrale für politische Bildung, vol 66).
Weber, Alexander: Soziale Merkmale der NSDAP-Wähler. Eine Zusammenfassung bisheriger empirischer Untersuchungen und eine Analyse in den Gemeinden der Länder Baden und Hessen. Phil.Diss. Freiburg 1969, p. 77 ff., 137 ff.
Recent: Kater, Michael H.: The Nazi Party. A social profile of members and leaders 1919-1945, Oxford 1983, p. 58 f., 65 f., 163 f.
Lohmöller, Jan-Bernd/Falter, Jürgen W./Rijke, Johann de/Link, Andreas: Unemployment and the rise of National Socialism: Contradicting results from different regional aggregations, in: Nijkamp, Peter (ed.): Measuring the Unmeasurable, Den Haag 1983.
Falter, Jürgen W. (ed.): Der Aufstieg der NSDAP im Spiegel der Wahlen (announced for 1986 by Westdeutscher Verlag, Opladen)
- 7 Hessen in Wort und Zahl (cf. note 4), p. 23.
- 8 For example two results of the six "Landkreiss (county) who composed province "Oberhessen": at elections for Reichstag in July 1932 in Landkreis Lauterbach 72.7% and in Landkreis Schotten 77.4% of votes fell to the NSDAP (Schön, Eberhard: Die Entstehung des Nationalsozialismus in Hessen, Meisenheim am Glan 1972, p. 201).
for electoral results cf.: Hessisches Landesstatistisches Amt/Zentralstelle für die Landesstatistik (ed.):
- Die Ergebnisse der Reichstagswahl im Volksstaat Hessen am nach einzelnen Gemeinden, Darmstadt.
- Die Ergebnisse der Landtagswahl im Volksstaat Hessen am nach einzelnen Gemeinden, Darmstadt.
- Mitteilungen des hessischen landesstatistischen Amtes, Darmstadt.
cf. also: Hennig, Eike (ed.): Hessen unterm Hakenkreuz. Studien zur Durchsetzung der NSDAP in Hessen, Frankfurt/Main 1983.
Knauss, Erwin: Die politischen Kräfte und das Wahlverhalten im Landkreis Gießen während der letzten 60 Jahre. (= Mitteilungen des Oberhessischen Geschichtsvereins, Neue Folge, vol. 45), Gießen 1961.
- 9 Knauss, Erwin: Die politischen Kräfte ... (cf. note 8), p. 67.
- 10 cf. Jarausch, Konrad H. (ed.): The Transformation of Higher Learning 1860-1930. Expansion, Diversification, Social Opening and Professionalization in England, Germany, Russia and the United States. (= Historisch-Sozialwissenschaftliche Forschungen, vol. 13), Stuttgart 1983.
Jarausch, Konrad H.: Deutsche Studenten 1800-1970, Frankfurt/Main 1984, p. 117-163.
Petrat, Gerhard: Die gezielte Öffnung der Hochschulreife für alle Volksschichten in der Weimarer Republik, in: Heinemann, Manfred (ed.): Sozialisation und Bildungswesen in der Weimarer Republik. Mit einer Einleitung von Wilhelm Roessler, Stuttgart 1976, p. 75-91.
Maskus, Rudi: Die Neuordnung der Mittelschule in der Weimarer Republik, in: Heinemann, Manfred (op.cit.), p. 93-103.
Müller, Sebastian F.: Zur Sozialisationsfunktion der höheren Schule. "Die Neuordnung des preußischen höheren Schulwesens" im Jahre 1924/25, in: Heinemann, Manfred (op.cit.), p. 105-116.
fundamental to education policy in Prussia: Becker, Carl Heinrich:

- Gedanken zur Hochschulreform. Leipzig 1919.
Becker was 1921 and 1925 to 1930 Prussian minister for education (Kultusminister).
- 11 cf. Kater, Michael H.: Studentenschaft und Rechtsradikalismus in Deutschland 1918-1933. Eine sozialgeschichtliche Studie zur Bildungskrise in der Weimarer Republik, Hamburg 1975, p. 43-80.
Jaraus, Konrad H. (1984), (cf. note 10), p. 129-151.
Contemporary analyses: Schlink, Wilhelm/Sikorski, Hans: Die Berufsaussichten der Akademiker, in: Doeberl, Michael et al. (ed.): Das akademische Deutschland, vol. II, Berlin 1931, p. 175-192.
Schairer, Reinhold: Die akademische Berufsnot. Tatsachen und Auswege, Jena 1932.
- 12 cf. Heinemann, Manfred (ed.): Erziehung und Hochschule im Dritten Reich, Teil 2: Hochschule, Erwachsenenbildung, Stuttgart 1980.
Möller, Horst: Nationalsozialistische Wissenschaftsideologie, in: Tröger, Jörg (ed.): Hochschule und Wissenschaft im Dritten Reich, Frankfurt/Main/New York 1984, p. 65-76.
Lundgreen, Peter: Hochschulpolitik und Wissenschaft im Dritten Reich, in: Lundgreen, Peter (ed.): Wissenschaft im Dritten Reich, Frankfurt/Main 1985, P. 9-30.
contemporary publications: Rust, Bernhard: Nationalsozialismus und Wissenschaft. Rede zum 550-jährigen Jubiläum der Universität Heidelberg, in: Das nationalsozialistische Deutschland und die Wissenschaft (= Schriften des Reichsinstituts für Geschichte des neuen Deutschlands), Hamburg 1936.
Rust was from 1934 to 1945 Reichsminister for Science, Education and People's Education (Volksbildung).
Huber, Hans: Der Aufbau des deutschen Hochschulwesens. Vortrag, gehalten auf der dritten fachwissenschaftlichen Woche für Universitätsbeamte der Verwaltungsakademie Berlin am 30. Januar 1939 (von Oberregierungsrat Hans Huber im Reichsministerium für Wissenschaft, Erziehung und Volksbildung, hrsg. von der Deutschen Forschungsgemeinschaft), Berlin 1939.
Wissenschaft und Vierjahresplan. Reden anlässlich der Kundgebung des NSD-Dozentenbundes Gau Groß-Berlin am Montag, dem 18. Januar 1937, in der Neuen Aula der Unviersität Berlin, ed.: NSD-Dozentenbund Gau Groß Berlin, o.O., o.J. (Berlin 1937).
Ritterbusch Paul: Universität und Wissenschaft im Kriege, in: Raumforschung und Raumordnung, 3.Jg., 1939, H. 11/12, p. 527-534.
Schumann, Erich: Wehrmacht und Forschung, in: Donnevert, Richard (ed.): Wehrmacht und Partei, Leipzig 1939.
- 13 The existence of Gießen university was in question several times: 1923/26, 1930/32, 1936/37 and 1949/40. After the National Socialist regime Gießen university was closed - as unique German university - by the American military government. The re-opening was realized in three steps: 1946-1950 considerable reduced "Hochschule" (not university) only for two disciplines (agriculture/Bodenkunde and veterinary science), 1950-1957 extension by natural sciences and medicine, 1957 completion by arts to university.
- 14 Based on Deutsches Gemeindeverzeichnis, Frankfurt/Main 1972 (= reprint from 1930).
- 15 Based on Alphabetisches Verzeichnis der Gemeinden mit einer Wohnbevölkerung von 2000 und mehr Einwohnern, in: Statistik des Deutschen Reichs, vol. 401, Teil I, p. 160-171.
- 16 Many thanks to Mr. Wolff and Mr. Ritter - employees of Hochschulrechenzentrum Gießen (University Computing Center) - for their patient assistance. Processing of data was carried out at (a Computer), type AEG 80-20 resp. CYBER 174.
- 17 Early analyses: Michels, Robert: Umschichtungen in den herrschenden Klassen nach dem Kriege, Stuttgart/Berlin 1934, esp. p. 58 ff.

(on social descent of German students).

Graaen Hubert: Gliederung der deutschen Studentenschaft nach statistischen Ergebnissen, in: Doeberl, Michael et al. (ed.): Das akademische Deutschland, vol. III, Berlin 1930, p. 317-348.

Nothaas, J.: Sozialer Auf- und Abstieg im Deutschen Volk. Statistische Methoden und Ergebnisse, München 1930 (= Beiträge zur Statistik Bayerns, vol. 117).

Cf. also: Jarausch, Konrad H. (ed.): The Transformation of Higher Learning 1860-1930 (cf. note 10).

Jarausch, Konrad H.: Students, Society and Politics in Imperial Germany. The rise of academic illiberalism. Princeton/New Jersey 1982, p. 78 ff.

Zapf, Wolfgang: Wandlungen der deutschen Elite. Ein Zirkulationsmodell deutscher Führungsgruppen 1919-1961, München 1965.

- 18 Cf. Kater, Michael H.: Studentenschaft und Rechtsradikalismus in Deutschland 1918-1933 (cf. note 11), p. 65.

Ringer, Fritz K.: The Decline of German Mandarins. The German Academic Community 1890-1933, Cambridge/Mass. 1969; German edition: Die Gelehrten. Der Niedergang der deutschen Mandarine 1890-1933, Stuttgart 1983.

Ringer, Fritz K.: Education and Society in Modern Europe, London 1979.

Ringer, Fritz K.: Bildung, Wirtschaft und Gesellschaft in Deutschland 1800-1960, in: Geschichte und Gesellschaft 6, 1980, p. 35 ff.

Lundgreen, Peter: Bildung und Besitz - Einheit oder Inkongruenz in der europäischen Sozialgeschichte? Kritische Auseinandersetzung mit einer These von Fritz Ringer, in: Geschichte und Gesellschaft, 7, 1981, p. 262-277.

- 19 In February 1926 the National Socialist German Student Union (NSDStB) was founded at Leipzig University by Wilhel Tempel; during the next three years almost all German universities followed.

Cf. Kater, Michael H.: Studentenschaft und Rechtsradikalismus in Deutschland 1918-1933 (cf. note 11), p. 111-125.

Kater, Michael H.: The Nazi Party (cf. note 6), p. 44.

Faust, Anselm: Der Nationalsozialistische Deutsche Studentenbund. Studenten und Nationalsozialismus in der Weimarer Republik, vol. 1, Düsseldorf 1973, P. 36-41.

The early student movement for democratization of universities 1919/20 can here only be mentioned without ambition to analyze its sources and its disappearing.

Cf. Schwarz, Jürgen: Studenten in der Weimarer Republik. Die deutschen Studenten in der Zeit von 1918 bis 1923 und ihre Stellung zur Politik. (West-)Berlin 1971.

Leisen, Adolf: Die Ausbreitung des völkischen Gedankens in der Studentenschaft der Weimarer Republik, Phil.Diss. Heidelberg 1964

- 20 "Fast 90% aus Arbeiter- und Mittelstandsfamilien" (letter to "Parteigenosse Gunia", presumable 1926, Archiv der ehemaligen Reichsstudentenführung und des NSDStB, Würzburg, II-47 b, fol. 4).

- 21 Conservative-monarchistic, republican, catholic or communist student organizations often were founded in reaction to the growing NSDStB. For example at Gießen university end of January 1929 a group of NSDStB was established (letter stud.jur. Hans Körbel to Reichsleitung der NSDAP 4.2.1929 (Archiv der ehem. RSF und des NSDStB, Würzburg, II-4), the constitutional meeting of the Republikanische Studentengruppe took place at 23.1.1929 (letter "Vorstand für das Wintersemester 1928/29", Archiv der Präsidialabteilung der Justus-Liebig-Universität Gießen [= PAG], act no). The other political student organisations were admitted by the "Engerer Senat" of Gießen university:

- Hochschulgruppe des "Stahlhelm": 4.11.1929 (letter Rektor Brüggemann to stud.med.vet. Gerhard Heim 4.11.1929, PAG 110)

- Deutscher Demokratischer Studentenbund: nov. 1929 (letter Rektor Brüggemann to Deutscher Demokratischer Studentenbund 2.12.1929, PAG 98)
 - Sozialistische Studentengruppe: dec. 1929 (letter Rektor Brüggemann to stud. (jur.) Karl Delp 23.12.1929, PAG 110)
 - Politische Studiengemeinschaft der Zentrumspartei: end of january/begin of february 1930 (letter Rektor Brüggemann 3.2.1930, PAG 100)
 - Hochschulgruppe der Deutschen Volkspartei: febr. 1930 (letter Rektor Brüggemann to Hochschulgruppe der DVP 27.2.1930, PAG 98)
- 22 As far as I know there are no studies to this question - at least on German students between 1918 and 1945.
- 23 For example the NSDStB gained 1930 at first stroke in elections to Allgemeiner Studentenausschuß (Asta) at Gießen 36,9% of votes, the alliance of (conservative) Korporationen received 47,4% (figures from Nachrichtenblatt der Gießener Studentenschaft Nr. 13 (24.2.1930), p. 15). At second candidature (1931) the NSDStB became the greatest student organisation at Gießen (55,5%; figure from Mitteilung der Studentenschaft Gießen 5.2.1931, PAG 96). The republican-democratic or communist student organisations at Gießen gained about 10 and 15% of votes. The quota of participation were: 42,3% (22.2.1929), 64,4% (12.2.1930), 78,7% (4.2.1931) and 80,0% (4.2.1932).
- For similar trends at other German universities during that period cf. Kater, Michael H.: Studentenschaft und Rechtsradikalismus in Deutschland 1918-1933 (cf. note 11), p. 212-217.
- Faust, Anselm: Der Nationalsozialistische Deutsche Studentenbund (cf. note 19), vol. 2, p. 140-149.
- Kalischer, Wolfgang (ed.): Die Universität und ihre Studentenschaft. Universitas magistrorum et scholarium. Versuch einer Dokumentation aus Gesetzen, Erlassen, Beschlüssen, Reden, Schriften und Briefen. Stifterverband für die Deutsche Wissenschaft, Jahrbuch 1966/67, p. 199-201.
- Kreutzberger, Wolfgang: Studenten und Politik 1918-1933. Der Fall Freiburg im Breisgau, Göttingen 1972, p. 155-157.
- 24 Already in the NSDAP-programme from 25.2.1920 was formulated: "20. (...) Wir fordern die Ausbildung besonders veranlagter Kinder armer Eltern ohne Rücksicht auf deren Stand oder Beruf auf Staatskosten." (We demand education of talented children of poor parents without regard of their rank or profession on state's cost.) (Das Programm der NSDAP, München 1920. Cf. also: Kater, Michael H.: Studentenschaft ... (cf. note 11), p. 114.
- 25 For Gießen university : all figures based on.
- ws 1918/19 - ws 1929/30: Personenbestand der Hessischen Ludwigs Universität zu Gießen, Gießen 1918 ff.
- ss 1930 - ss 1939: Vorlesungsverzeichnis. Personenbestand der Hessischen Ludwigs-Universität zu Gießen, Gießen 1930 ff.
- ws 1939/40 - ws 1944/45: own empiric research based on student card-index for German universities:
- ws 1918/19: Statistisches Jahrbuch für das deutsche Reich, 41.Jg., Berlin 1920, p. 150
- ss 1919 - ws 1934/35: Deutsche Hochschulstatistik, ed.: Reichsminister für Wissenschaft, Erziehung und Volksbildung, Berlin 1928 ff.
- ss 1935, ws 1935/36: Die Deutschen Hochschulen. Eine Übersicht Über ihren Besuch, ed.: Reichminister für Wissenschaft, Erziehung und Volksbildung, Vol. 1: Sommerhalbjahr 1935 und Winterhalbjahr 1935/36, Berlin 1936, p. XVI
- ss 1936 - ws 1943/44: Statistisches Handbuch von Deutschland 1928-1944, ed. by Länderrat des Amerikanischen Besatzungsgebiets, München 1949, p. 622

- 26 For the period after ss 1933 the extreme small share of 0.43% in ws 1939/40 should not be considered because of the conversions at all German universities on war conditions.
- 27 Cf. Kater, Michael H.: Studentenschaft . p. 67.
Jarusch, Konrad H.: Deutsche Studenten 1800-1970 (cf. note 10), p. 131 f.
Faust, Anselm: Der Nationalsozialistische Deutsche Studentenbund. (cf. note 19), vol. i, p. 24.
Schwarz, Jürgen: Studenten in der Weimarer Republik, (cf. note 19), p. 52 ff.
For Gießen university cf. Apfelstedt, Heinrich: Professoren und Studenten der Ludoviciana in der Universitätsstatistik, in: Nachrichten der Gießener Hochschulgesellschaft, vol. 6., H.2 (1927/28), Gießen 1928, p. 21-30, here p. 26.
- 28 cf. fig. 17. cf. also Kater, Michael H.: Studentenschaft . p. 44 ff, 57, 67. The extent of pauperization even at a provincial university like Gießen may illustrate two indications:
1923 about 75% of Gießen students were depend from services of "Gießener Studentenhilfe" (founded in July 1921) which offered mensa (gratuitous meals: ("Freitische"), student appartments (Wohnheime, established 1924 and 1930), sick funds etc.
Cf. Das Studentenwerk Gießen e.V. Vormalis Gießener Studentenhilfe. Ein Beitrag zu seiner Geschichte von Emil Kraus, in: Gießener Universitätsführer 1936/37, p. 53 ff., here p. 66).
According a medical investigation from ss 1923 to ws 1924/25 (quota of researched students amounted 75.2, 58.9, 70.3 and 54.4%) 62.2% of Gießen students were underweighted and 1,9% were tubercular - the highest rate among German universitäts!
- Figures cf. Jung, R.: Die Ergebnisse der Untersuchung der Studentenschaft an der Universität Gießen SS 23 WS 24/25, in: Münchener Medizinische Wochenschrift, 1925, Nr. 44, p. 1880 ff.
- 29 Cf. Petzina, Dietmar/Abelshäuser, Werner: Zum Problem der relativen Stagnation der deutschen Wirtschaft in den zwanziger Jahren, in: Mommsen, Hans/Petzina, Dietmar/Weisbrod, Bernd (eds.) Industrielles System und politische Entwicklung in der Weimarer Republik, vol. 1, Kronberg/Düsseldorf 1977, p. 57 ff.
Ziebur, Gilbert: Weltwirtschaft und Weltpolitik 1922/24-1931. Zwischen Rekonstruktion und Zusammenbruch, Frankfurt/M. 1984, p. 83 ff.
- 30 Cf. Kater, Michael H.: Studentenschaft . p. 58.
Jarusch, Konrad H.: Deutsche Studenten 1800-1970, p. 136 139.
- 31 Cf. Schlink, Wilhelm/Sikorski, Hans: Die Berufsaussichten der Akademiker, (cf. note 11), p. 180.
Kater, Michael H.: Studentenschaft ..., p. 67 f.
- 32 E.g. 1934 only 15.000 pupils (= less than 50% of annual number) were allowed to receive a-level; this measure was based on the "Gesetz gegen die Überfüllung deutscher Schulen und Hochschulen" (25.4.1933), Reichsgesetzblatt 1933, Teil I, p. 225.
- 33 By "Verordnung zur Durchführung des Gesetzes gegen die Überfüllung deutscher Schulen und Hochschulen vom 25.4.1933" the share of Jewish students was limited on 5.0%, in new immatriculations on 1.5% (cf. Reichsgesetzblatt 1933, Teil I, p. 226).
At Gießen university in ss 1933 25 German and 8 foreign Jewish (or "semijewish") students were immatriculated. According to "Gesetz gegen die Überfüllung deutscher Schulen und Hochschulen" only children of Jewish veterans were admitted to study. So still during ss 1933, after publication of "Gesetz gegen die Überfüllung ...", from Gießen university the "non admitted" students were exmatriculated and only 10 male and 2 female ("semi"-) Jewish students remained. From ws 1933/34 no Jewish student was newly immatriculated at Gießen.
(Cf. letter of Rektorat Gießen university 5.7.1933 (PAG 71), "Verzeichnis der nichtarischen Studierenden der Universität Gießen, die im Sommersemester 1933 immatrikuliert waren, weil jeweils der Vater Frontsoldat war", anonymous, without date, PAG 71).

- 34 At Gießen university four members of "Rote Studentengruppe" (close to Jarausch, Konrad H.: Deutsche Studenten 1800-1970 (cf. note 10), p. 131 f. Faust, Anselm: Der Nationalsozialistische Deutsche Studentenbund. (cf. note 19), vol. i, p. 24. KPD) were relegated in ss 1933 (letter Rektor Jess, 18.8.1933, PAG 103), in ws 1933/34 three exmatriculated students were relegated from all German universities because of communist activities before 30.1.1933 (letter Rektor Bornkamm, 1.2.1934, PAG no).
- 35 Cf. "Gesetz gegen die Überfüllung deutscher Schulen und Hochschulen" (cf. note 32).
- 36 Cf. Pauwels, Jacques R.: Women and University Studies in the Third Reich '933'945> New York 1984.
Stephenson, Jill: Women in Nazi Society, London 1975.
Weyrather, Irmgard: Numerus Clausus für Frauen - Studentinnen im Nationalsozialismus, in: Frauengruppe Faschismus Forschung Mutterkreuz und Arbeitsbuch. Zur Geschichte der Frauen in der Weimarer Republik und im Nationalsozialismus, Frankfurt/M. 1981, p. 131-162.
Soden, Kristine von: Zur Geschichte des Frauenstudiums, in: Soden, Kristine von/Zipfel, Gaby (eds.): 70 Jahre Frauenstudium. Frauen in der Wissenschaft, Köln 1979, p. 9 42, esp. p. 26-33.
For Gießen cf. fig. 5.
- 37 Face to a growing deficiency of academicians, the German Rektorenkonferenz discussed on 11.5.1937 shortening of study duration as a remedy (cf. decree (Erlaß) of Reichs and Preußischer Minister für Wissenschaft, Erziehung und Volksbildung WJ Nr. 2050/37 (a), 11.6.1937). In the following time each university had to suggest certain measures for each faculty (statements of Gießen faculties in PAG 75). Prevailing a shortening of second phase of academic education (Referendariat) for students of law and teachership was suggested, the Medicine faculty recommended removal of several courses in semester holidays (cf. PAG 75).
- 38 Cf. Bechtel, Heinrich: Lob der kleinstädtischen Universität, in: Studium in Gießen, ed. im Auftrage der Stadt Gießen und des Verkehrsvereins Gießen, Gießen, without date (presumable 1933/34), p. 10-14.
Cf. also Adam, Heinz-Jürgen (Studentenschaftsführer Gießen): Das Studium im nationalsozialistischen Staat, in: Das Studium in Gießen, (see above), p. 8 f.
- 39 The first rumours concerning a planned dissolution of one of the universities Frankfurt/M., Gießen or Marburg are object of a letter from Gießen Studentenschaftsführer Heinz Jürgen Adam to Reichsstudentenführer (Oskar Stäbel), 3.3.1934 (RSF Ix 03 (phi) 253/III).
Fears of an imminent dissolution of Gießen university were strengthened by removals of professors from Gießen and by overproportional reduction of student figures. For example the reduction of student figures at Gießen amounted 49.25% between ss 1933 and ss 1935, the average rate of reduction amounted 38.27% (in large cities 41.59%) (all figures cf. Deutsche Hochschulstatistik. Mit einer textlichen Darstellung. Ed. by Reichsminister für Wissenschaft, Erziehung und Volksbildung, vol. 14: Winterhalbjahr 1934/35, P- 9)-
Beside these measures also institutional changes were feared:
- dissolution of faculty of law 1935 (cf. letter Studentenschaftsführer Gießen, Hans Stenger, to Reichstudentenführer Andreas Feickert, 10.9.1935, RSF Ix 03 (phi) 13/2). In this letter also rumours on planned dissolution of theological faculty and faculty of arts are mentioned.

- deprivation of competence to examine economists (Diplom-Volkswirte) **1937** (deprivation was reversed because of protests by Erlaß from **8.6.1937**, cf. PAG 76).
 - dissolution of veterinary faculty (**1939/40**, cf. letter of veterinary faculty (Prodekan) to Rektor Gießen, **7.3.1940**, PAG 78).
 - dissolution of Geologic Institut (cf. letter director Geologic Institute to Rektor Gießen, **12.8.1941**, PAG 71).
- None of these measures was realized (because of protests of National Socialist Rektors, deans and professors and esp. of Gauleiter Sprenger), but even an ardent National Socialist like Prof. Karl Hummel (member of NSDAP since **1925!**), director of Geologic Institute (see above!) and activist of NS-Dozentenbund at Gießen, criticized that large city universities were preferred in any regard (cf. letter Prof. Karl Hummel to Rektor Gerhard Pfahler **13.11.1936**, personal act Hummel, PAG).
- 40** Letter Reichsstatthalter Jakob Sprenger to Reichs- und Preussischer Minister für Wissenschaft, Erziehung und Volksbildung, Bernhard Rust, **23.4.1936** (Bundesarchiv Koblenz, R 21 (Rep. 76)).
 - 41** Cf. Rust, Bernhard: Reichuniversität und Wissenschaft. Zwei Reden, gehalten in Wien am **6. November 1940**, Berlin **1940**.
Gross, Walter: Nationalsozialismus und Wissenschaft, in: Nationalsozialistische Monatshefte, H. **154 (1942)**.
Ritterbusch, Paul: Universität und Wissenschaft im Kriege, in: Raumforschung und Raumordnung, 3.Jg., **1939**, H.11/12, p. **527-534**.
Grimm, Gerhard: Die deutschen Universitäten von **1939** bis **1945**, in: Politische Studien, 20. Jg., H. **184 (März/April 1969)**, p. **222-230**.
Universities during world war II. Materials of the international Symposium hold at the Jagellonian University on the **40** anniversary of "Sonderaktion Krakau", Cracow, October **22-24**, '79> "" by Jozef Buszko and Irena Paczynska; Warszawa/Kraków **1984**, p. **445 ff**.
Jarausch, Konrad H.: Deutsche Studenten **1800-1970** (cf. note 10), p. **200-211**.
 - 42** Cf. Jarausch Konrad H.: Deutsche Studenten p. **182-186**.
Dahrendorf, RALF: Society and Democracy in Germany, Garden City/N.J. **1969**» P- **381 ff**.
 - 43** Deutsche Hochschulstatistik, vol. **5**, Sommerhalbjahr **1930**, p. **79**.
 - 44** Cf. Arminger, Gerhard: Involvement of German Students in NS Organizations. Based on the Archive of the Reichsstudentenwerk, in: Historical Social Research. Historische Sozialforschung, No. **30** (April **1984**), p. **3-34**.
 - 45** Cf. my first conception for a "biographic anamnesis": Überlegungen zur Analyse von NS-Biographien, in: Mitteilungen der Dokumentationsstelle zur NS-Sozialpolitik, i.Jg., **1985**, H. **7/8** (September/Oktober) **1985**, p. **101-115**.
In autumn **1986** a biographic and content analysis of private letters (about **2.500** pages) of an activist from National Socialist "euthanasia" will be finished; provisory title: "Friedrich Mennecke - Innenansichten eines medizinischen Täters".
cf. also: FUCHS, Werner: Biographische Forschung. Eine Einführung in Praxis und Methoden. Opladen **1984**.
Heinze, Thomas: Hermeneutisch-lebensgeschichtliche Forschung. Theoretische und methodologische Konzepte, vol. **1**, Fernuniversität Hagen **1984**.
 - 46** Schröder, Wilhelm H. (ed.): Lebenslauf und Gesellschaft. Zum Einsatz von kollektiven Biographien in der historischen Sozialforschung, Stuttgart **1985**.
Schröder, Wilhelm H.: Quantitative Analyses of Collective Life Histories: The case fo the Social Democratic Candidates for the German Reichstag **1898-1912**, in: Clubb, Jerome M./Scheuch, Erwin K. (eds.): Historical Social Research. The Use of Historical and Process-Produced Data, Stuttgart **1980**, p. **203-224**.

I. s. w. <i>31 32 33 34 35 36 37 38 39 40 41 42 43 44 45 46 47 48 49 50</i>		MatrikelNr. <i>176</i>
Ausweis- Karte Nr. <i>FA 1315 337</i>		Grundliste Nr.
Familien- und Vorname: <i>[Redacted] Paul</i>		Religion: <i>ev.</i>
Wohnung in Gießen: <i>Souffl. 50 pt 0</i>		Stud: <i>theol.</i>
% Geburtsjahr und -tag <i>^ ^ ^ ^ ^ ^ ^ ^ ^ ^</i>		Schulbildung, Reifezeugnis:
• Geburtsort <i>^ ^ ^ U ^ / & 4 ++</i>		Gymnasium zu: <i>Heuberg / Leh</i>
Provinz: % * » <i>hes.</i> Land: <i>fr.</i>		Realgymnasium zu:
Staatsangehörigkeit <i>fr.</i>		Oberrealschule zu:
I: Stand des Vaters: <i>fr.</i>		Sonstige Schul-Zeugnisse:
Wohnort der Eltern: <i>Runkel / Leh</i>		
Provinz: <i>hes. rhein</i> Straße Nr.		Zahl der bisherigen Semester: <i>5</i>
Abgangsergebnis am: <i>5</i> « * Nr. # f J <i>4</i>		Beurlaubt

fig. 1 : student card-index us 1918/19 - ws 1933/34

Fig. 2: student card-index ss 1934 - ws 1944/45

	1	2	3	4	5	6	7	8	9	10	
A	1934	34/35	1068								
B	Deutsche Studentenschaft										
C	Kreis VI										
D	Universität Gießen										
E	Name:	[Redacted]	Matr.-Nr.:	777	777						
F	Vornamen:	Kunnam	Studentenp.-Nr.								
G	geboren am:	1. II. 13	Studienfach:	Medizin							
H	Staatsangehörigkeit:	Dtsch	in:	Atlar							
I	Verheiratet seit:		Konfession:	wangl.							
J	Kinder:		Wohlfahrter:	1.							
K	Schulbildung:	Realschule	in:	Giessen							
L	Abschluß:	Realschule	Zeugnisjahrgang:	1908							
M	Immatrikuliert am:	4. XI. 1934	Immatrikuliert am:	29. Okt. 1935							
N	Verfälscht:	Giessen	Zeugnisjahrgang:	1908							
O	Bisheriges Studium (Universität oder Hochschule, Ort und Zeit):	4. Sem. 1934									
P	Name des Vaters:	Kunnam									
Q	Beruf des Vaters:	Lehrer									
R	Nachricht des Vaters:	Atlar									
S	Name der Mutter:	Kunnam									
T	Beruf der Mutter:	Lehrer									
U	Nachricht der Mutter:	Atlar									
V	Hefige Anschrift:	Postfach									
W	Regierung:	Städt. Nr. 10									
X	Telefon:	15									
Y	Stempel:	Stempel									
Z	Handwritten notes:	Handwritten notes and signatures, including 'Kunnam', 'Atlar', and '1935'.									

	1	2	3	4	5	6	7	8	9	10
A	Hochschule:									
B	Fachsemester:									
C	Darin tätig als:									
D	Nat.-Soz. Deutschl. Stud.-Verein, Mitglied seit: 1.5.33/34									
E	Darin tätig als:									
F	Korrespondenz bzw. Mitbestimmungsdienst: Mitglied seit: 1.5.33/34									
G	Kameradschaftsfunktion: Mitglied seit: 1.5.33/34									
H	Darin tätig als:									
I	Mitglied in SA, SA-Sturm: 14. II. 38									
J	Mittelschicht in Wehrverbänden: SA-Mann									
K	Mittler-Jugend bzw. Jugendbund: SA-Mann									
L	Turn- oder Sportverband: SA-Mann									
M	Im Besitz des a) Reichsjugendabzeichens, b) Reichsportabzeichens c) SA-Sportabzeichens									
N	Veranstaltungsförderer-Verband: SA-Mann									
O	Kenntnisse in Stenographie, Schreibmaschine: SA-Mann									
P	Bereitschaft in Plakatschrift und Zeichnen: SA-Mann									
Q	Sprachkenntnis: SA-Mann									
R	Welche Musikinstrumente spielen Sie: SA-Mann									
S	Ausführung in erster Hilfeleistung: SA-Mann									
T	Welche Fahrzeug-Führerscheine besitzen Sie: SA-Mann									
U	Welches Fahrzeug besitzen Sie am Hochschulort: SA-Mann									

fig. 4

STUDENTS OF GIESSIN UNIVERSITY 1915/19 - 1944/45
NUMBER OF IMMATRICULATED STUDENTS

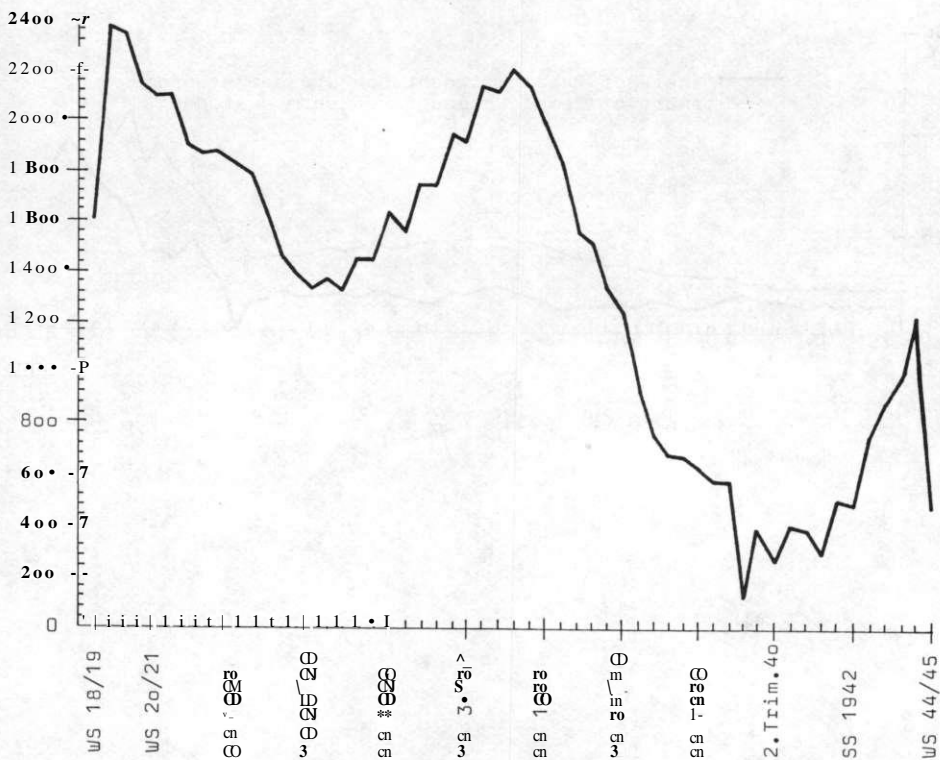


fig. 5

STUDENTS OF GIESSEN UNIVERSITY WS 1918/19 - WS 1944/45
FEMALE STUDENTS

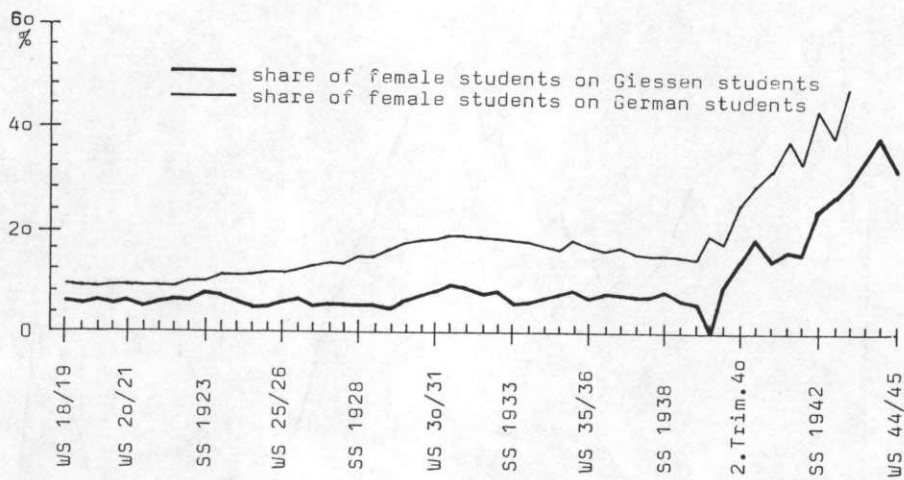


fig. 6
STUDENTS OF GIESSEN UNIVERSITY WS 1918/19 - WS 1944/45 : SUBJECTS

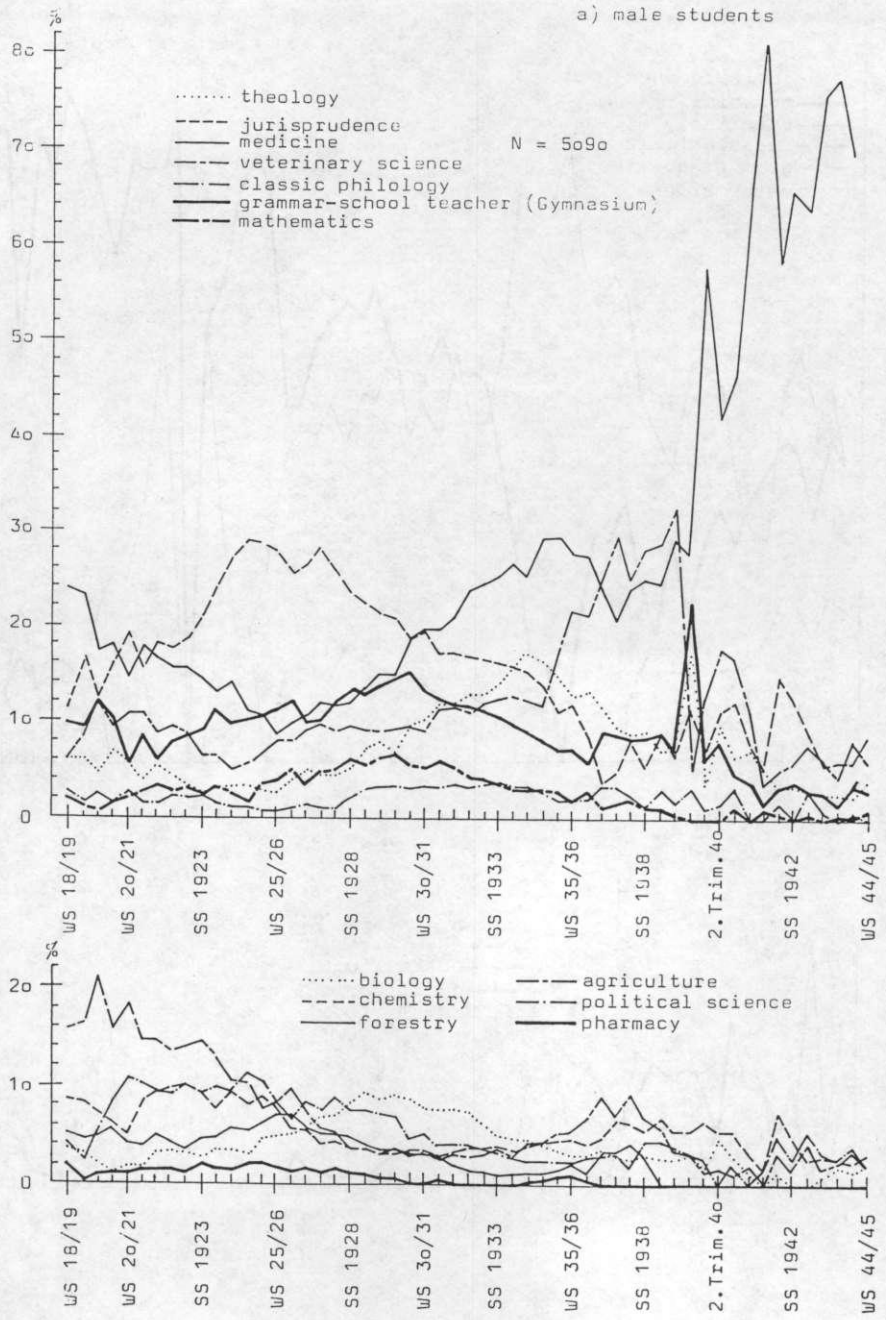


fig. 6 (pursuit)
STUDENTS OF GIESSEN UNIVERSITY WS 1918/19 - WS 1944/45 : SUBJECTS

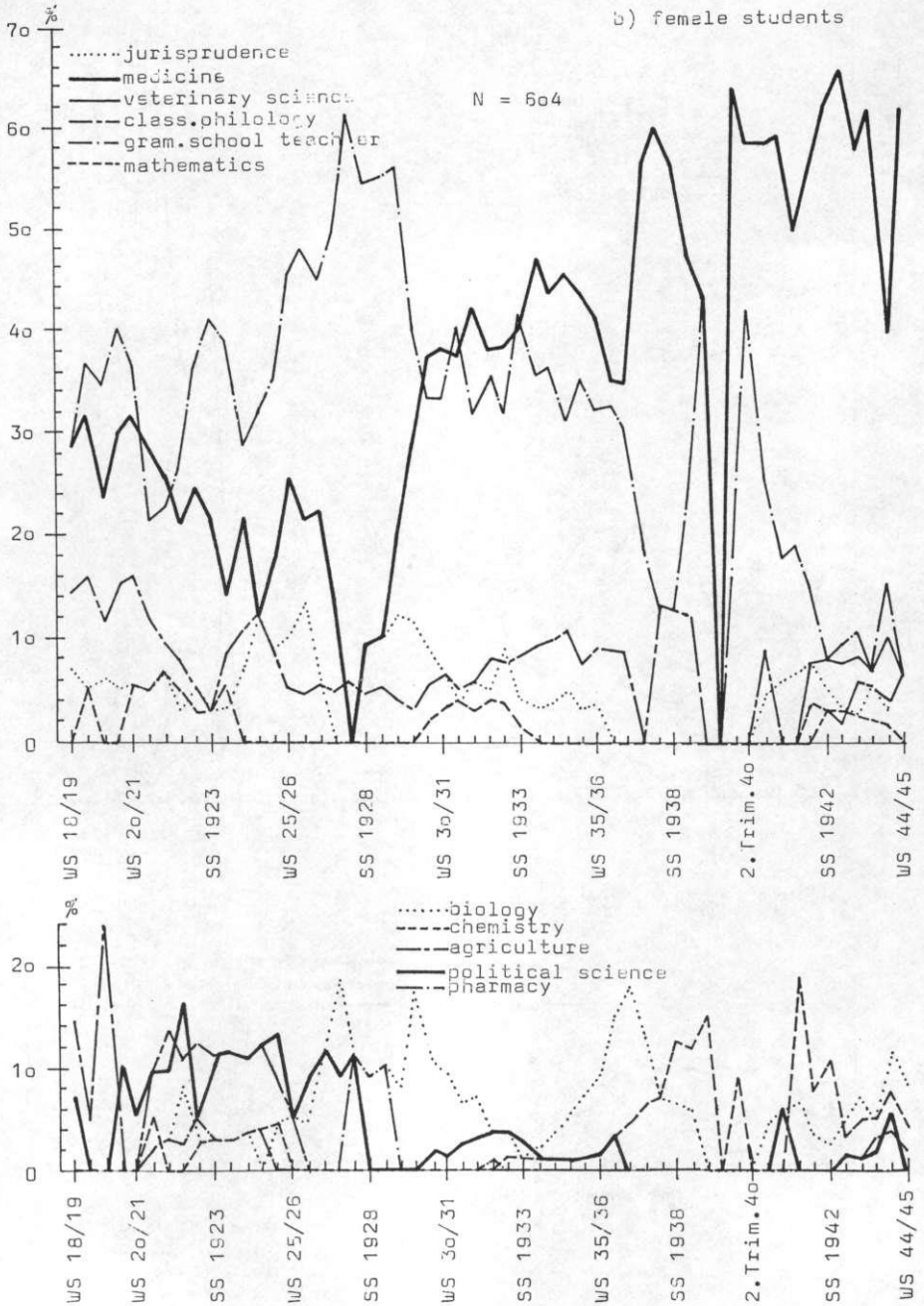


fig. 7

STUDENTS OF GIESSEN UNIVERSITY WS 1818/19 - WS 1944/45

PLACE OF BIRTH: REGION

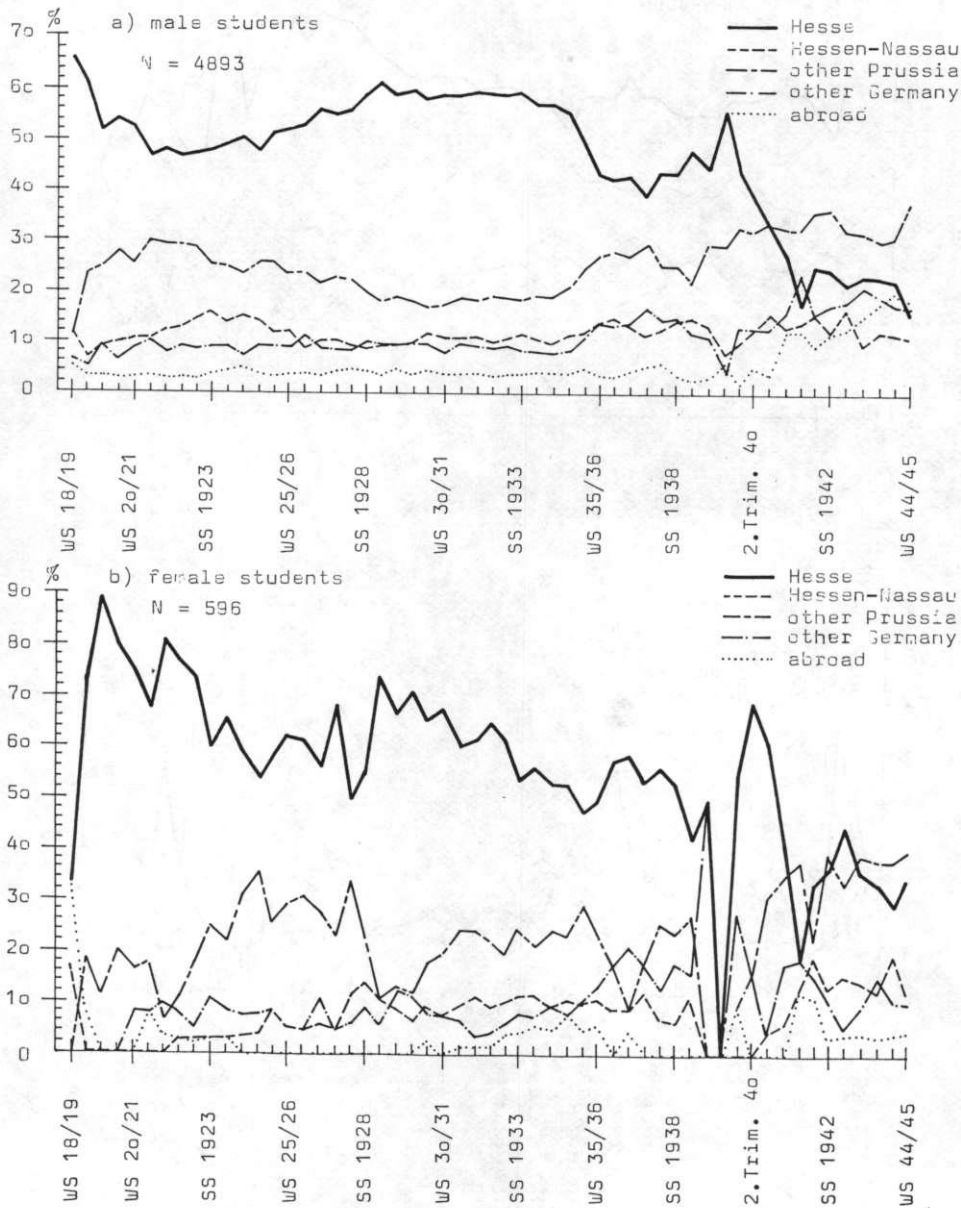


fig. e

STUDENTS OF GIESSEN UNIVERSITY WS 1918/19 - WS 1944/45
PLACE OF BIRTH: COMMUNITY'S SIZE

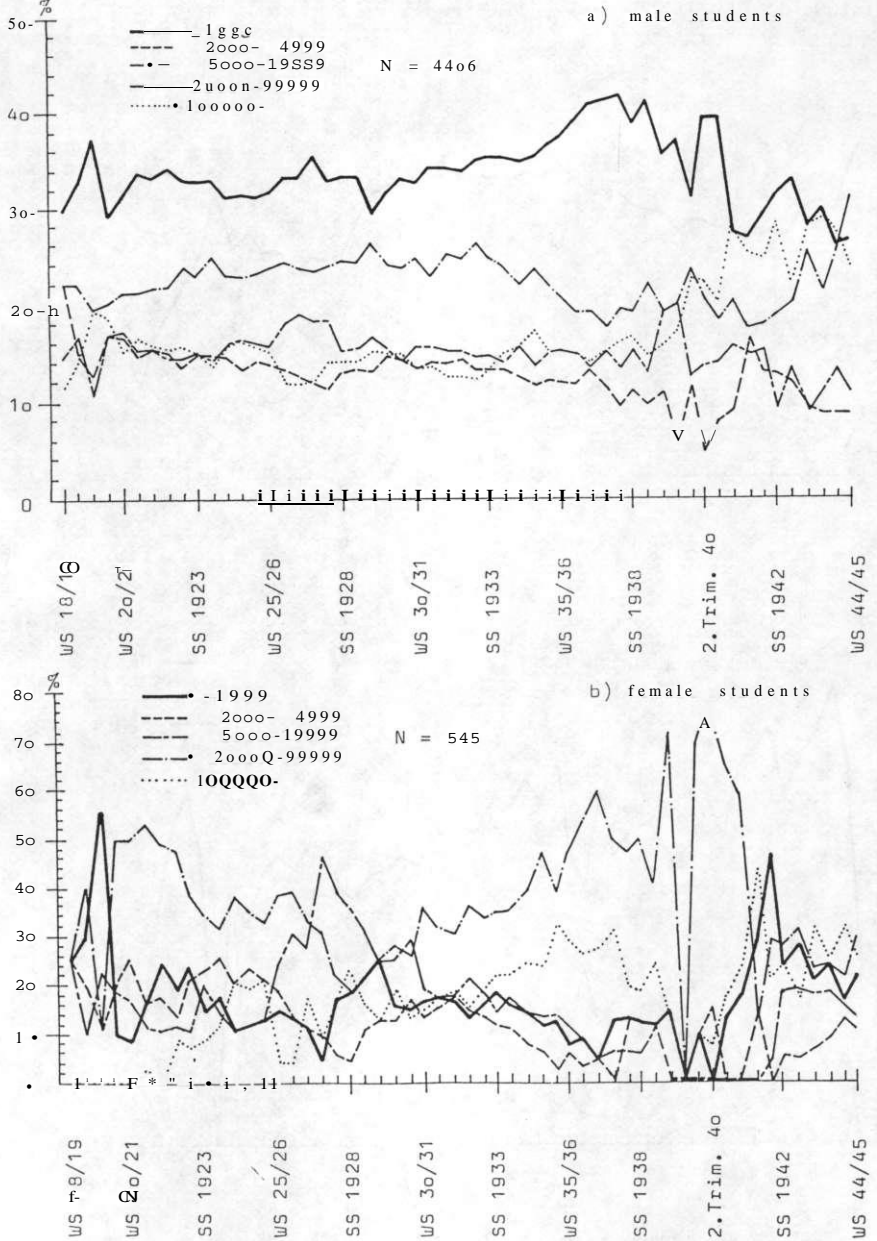


fig. 9
STUDENTS OF GIESSEN UNIVERSITY US 1913/19 - WS 1944/45

CONFESSION

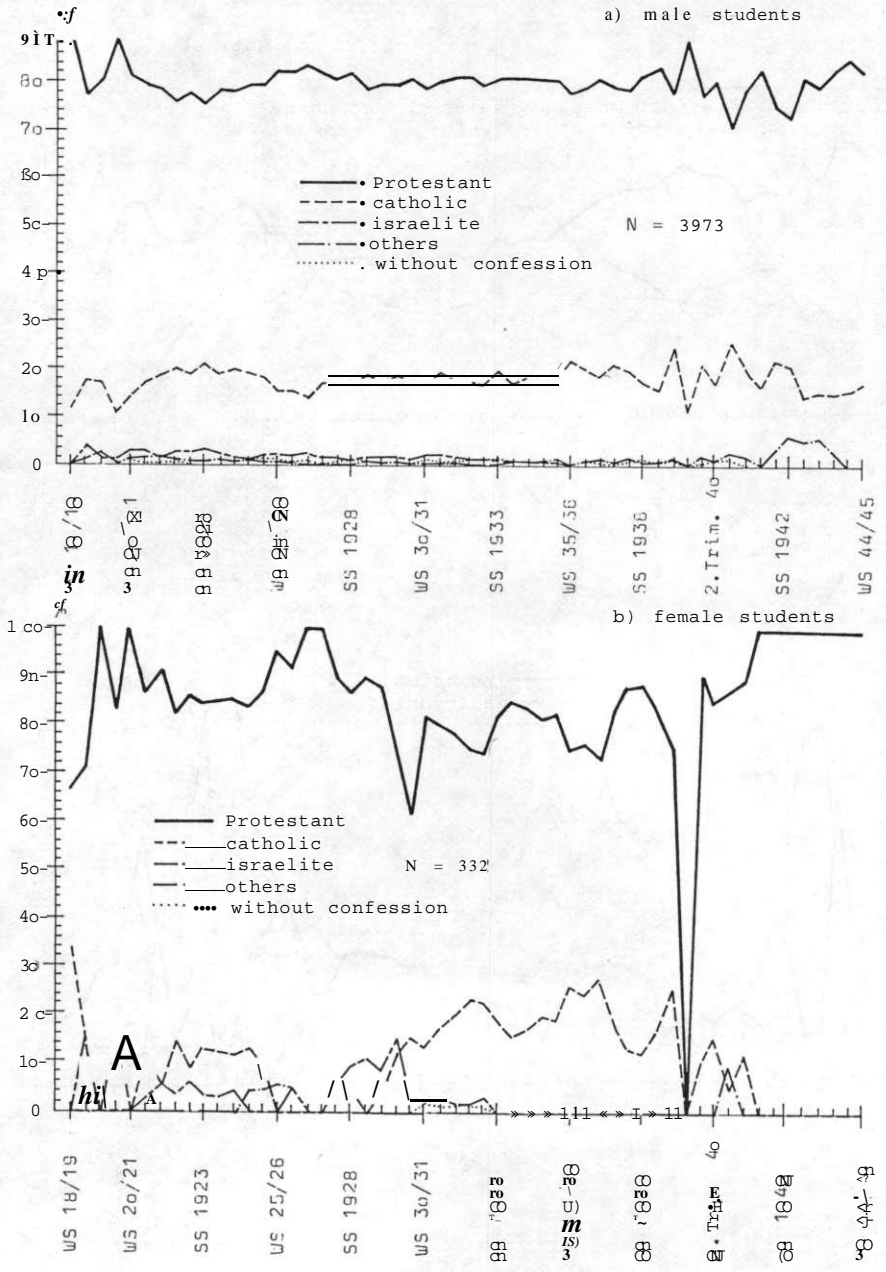


fig. 1a

STUDENTS OF GIESSEN UNIVERSITY WS 1918/19 - WS 1944/45
EDUCATION

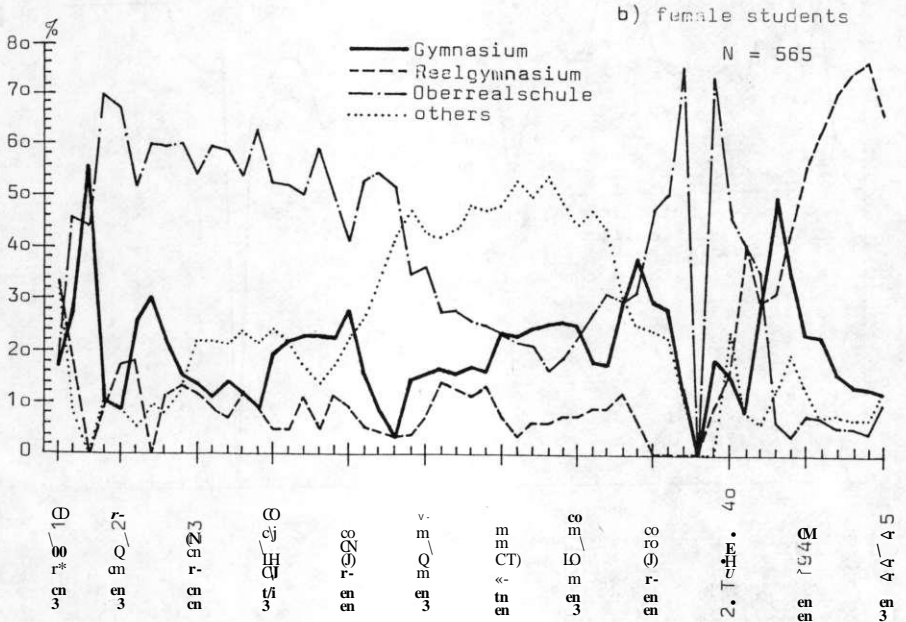
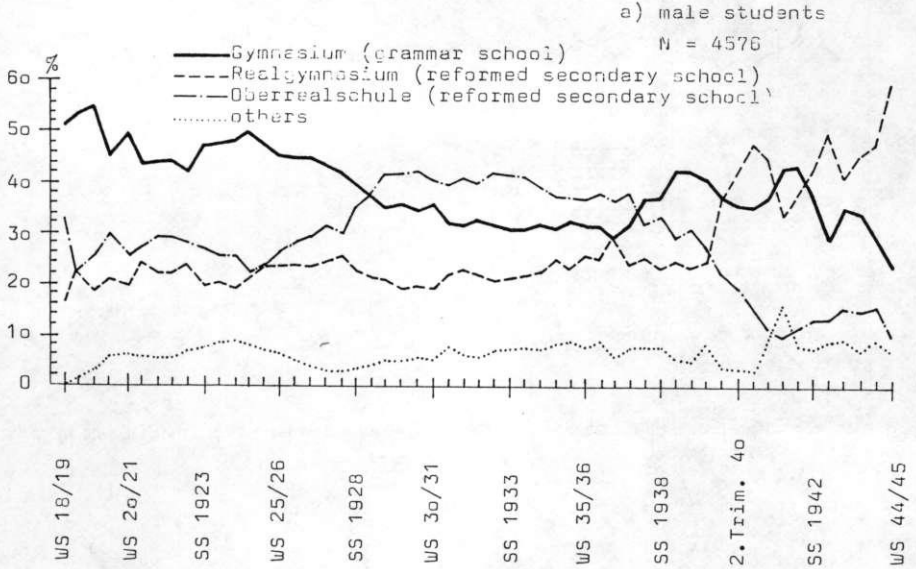


fig. 11
STUDENTS OF GIESSEN UNIVERSITY WS 1918/19 - WS 1944/45
IMMATRICULATED BEFORE AT OTHER GERMAN UNIVERSITY

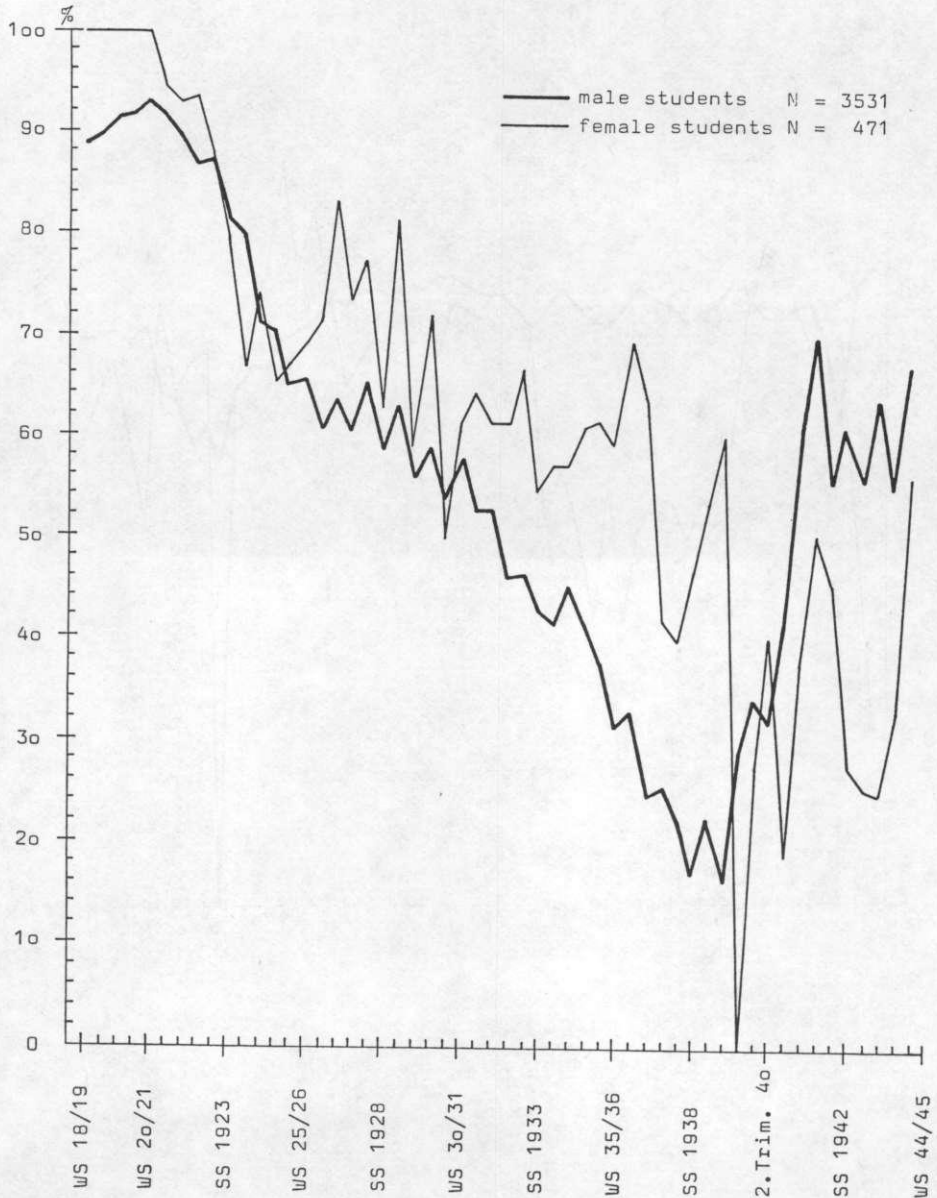


fig. 12
STUDENTS OF GIESSEN UNIVERSITY WS 1918/19 - WS 1944/45
PARENTS' RESIDENCE IDENTICAL WITH STUDENT'S PLACE OF BIRTH

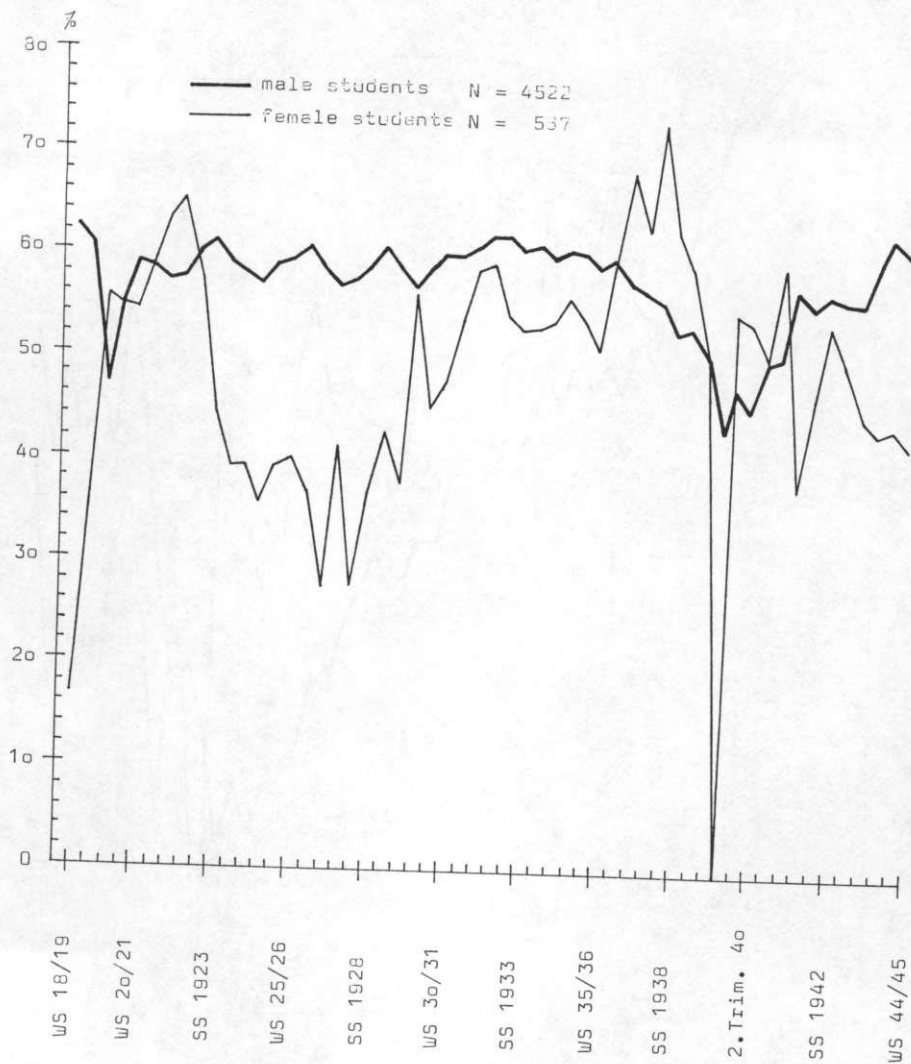
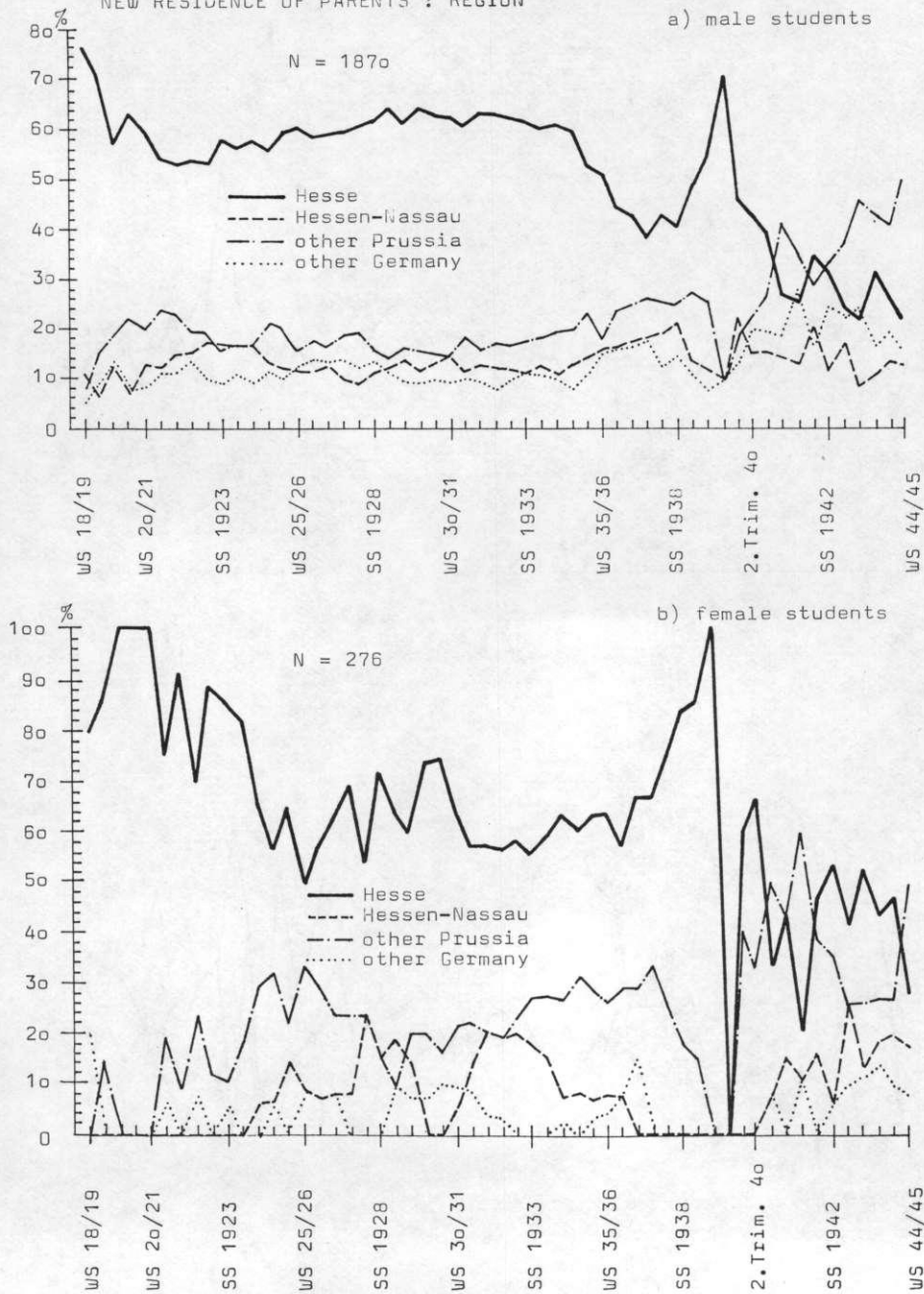


fig. 13

STUDENTS OF GIESSEN UNIVERSITY WS 1918/19 - WS 1944/45
NEW RESIDENCE OF PARENTS : REGION



fiy. 14

STUDENTS OF GIESSEN UNIVERSITY US 1315/16 - US 1944/45

NEW RESIDENCE OF PARENTS : COMMUNITY'S *Slid*

a) *male* studer.ts

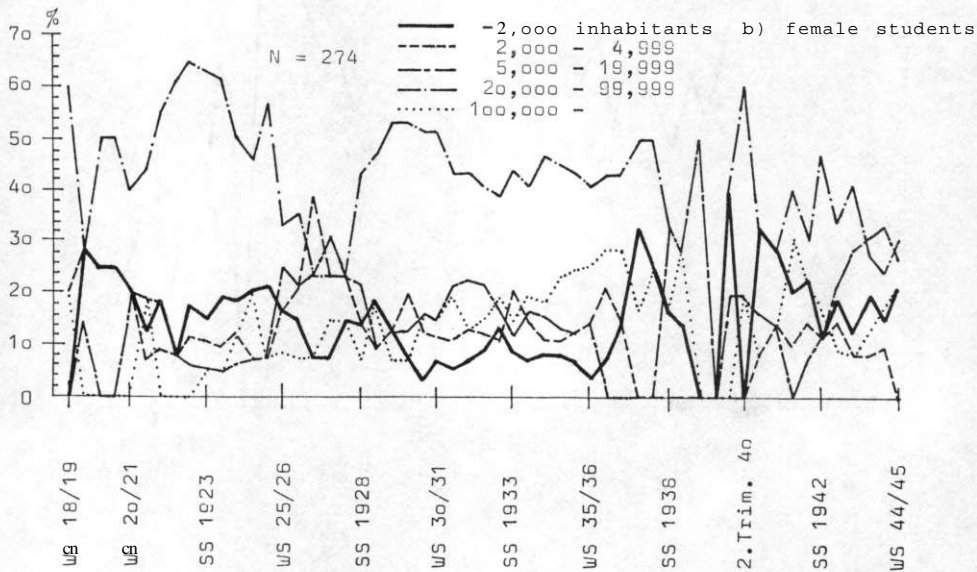
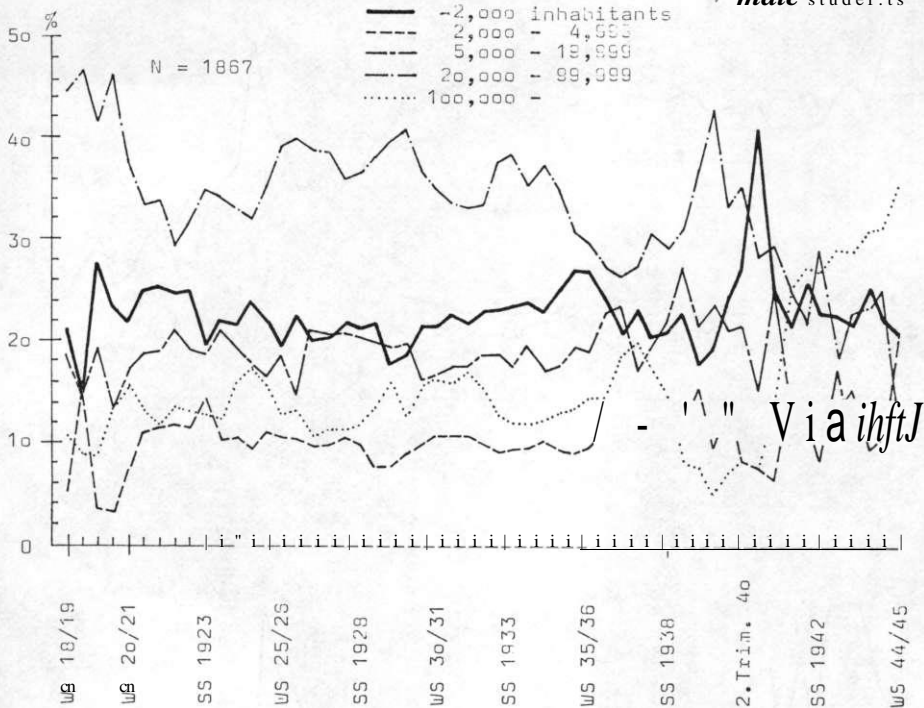


fig. 15

STUDENTS OF GIESSEN UNIVERSITY US 1916/19 - US 1944/45
STUDENT'S RESIDENCE DURING SEMESTER AT PARENTS' RESIDENCE

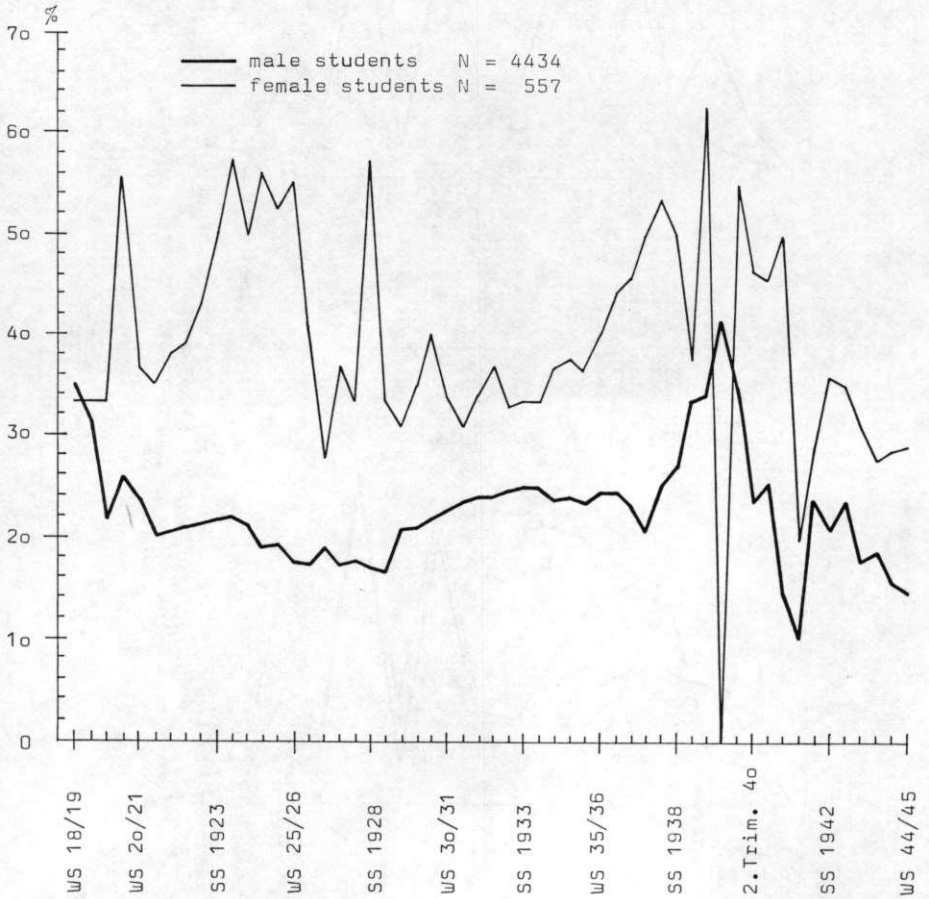
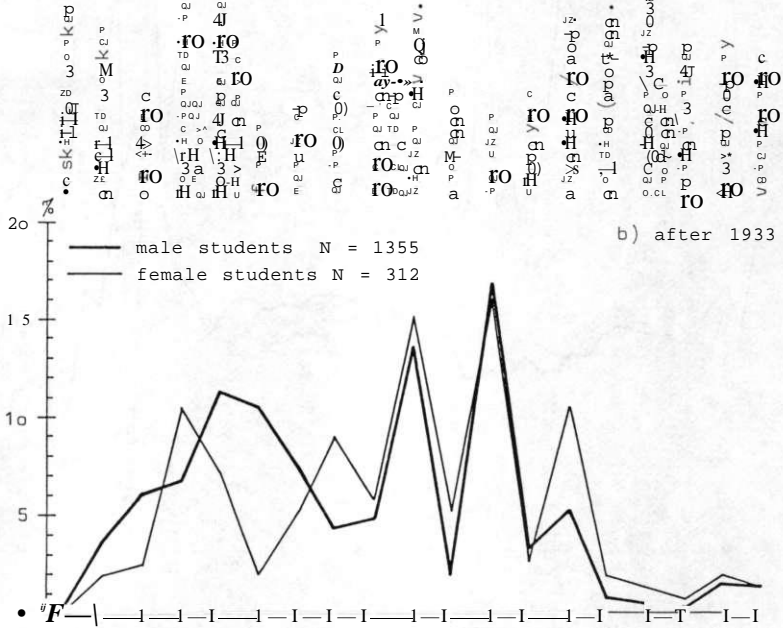
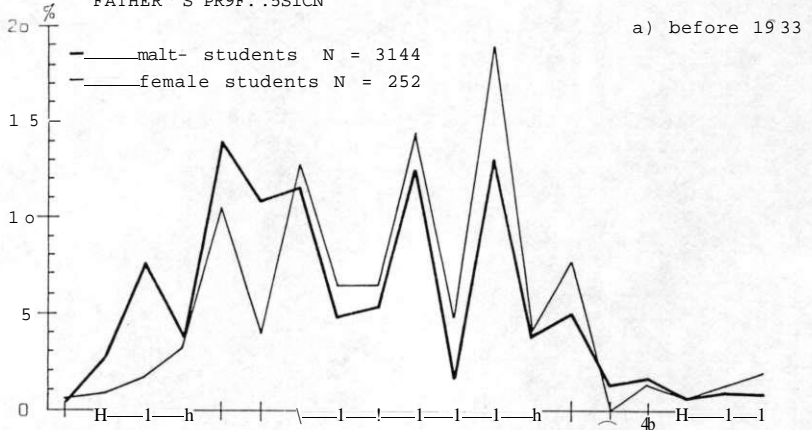
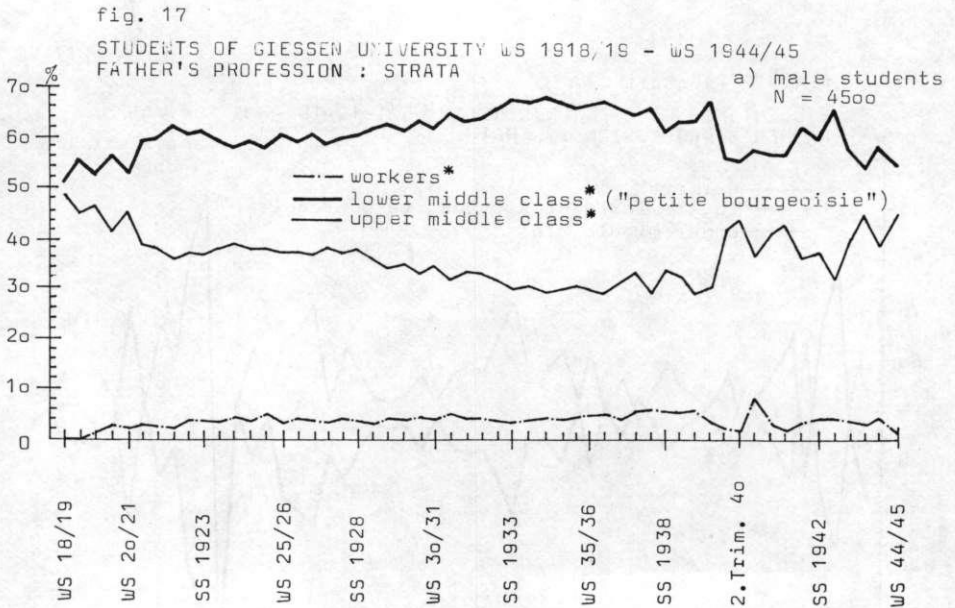


fig. 16

STUDENTS OF GIESSEN UNIVERSITY US 1918/19 - US 1944/45
FATHER 'S PR9F.'5SICN





the following professions were comprehended to strata :

workers*": unskilled worker, skilled worker

lower middle class*": craftsman, lower/intermediate employee,
lower/intermediate civil servant, farmer, merchant/
innkeeper, teacher

upper middle class*": entrepreneur/ manufacturer, manager (salary-
dependent), higher civil servant, professor, clergyman,
physician/ apothecary, soldier (professional), pensioner/
without profession, artist/writer, lawyer/notary, veteri-
narian

fig. 17 (pursuit)

STUDENTS OF GIESSEN UNIVERSITY WS 1918/19 - WS 1944/45
FATHER'S PROFESSION : STRATA

b) female students
N = 564

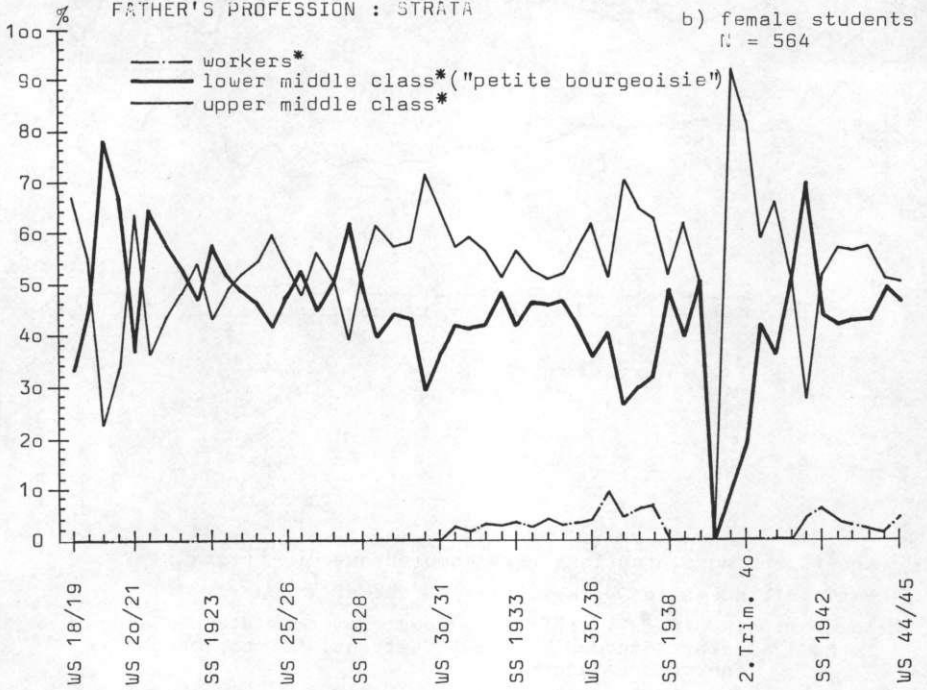


fig. 18

STUDENTS OF GIESSEN UNIVERSITY WS 1918/19 - WS 1944/45
FATHER'S PROFESSION : ACADEMICIAN

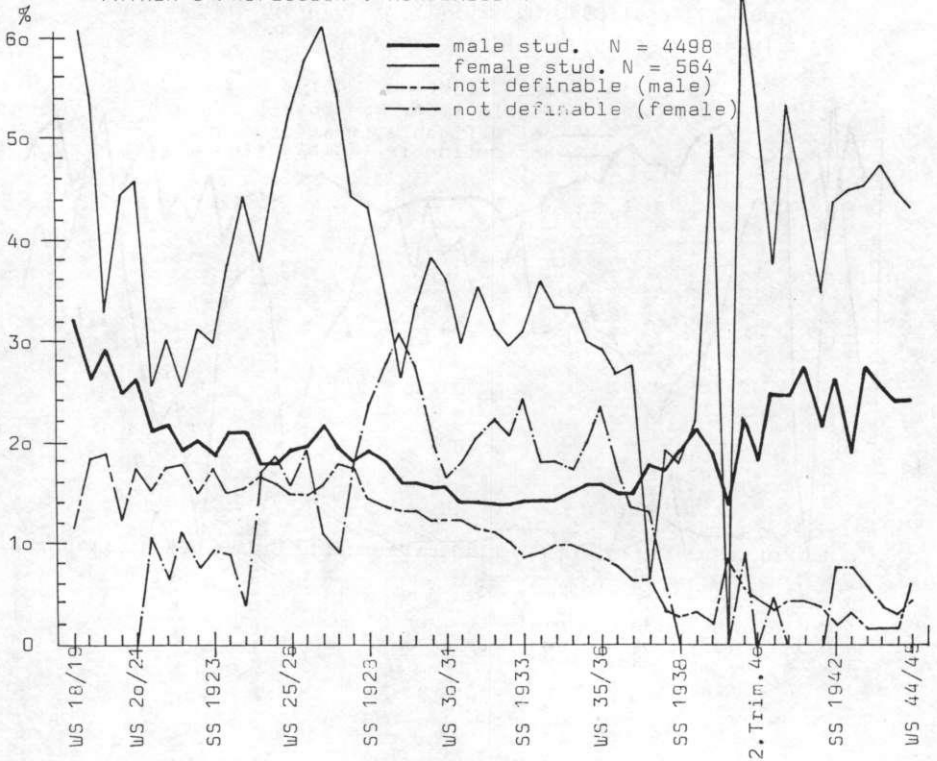


table 18

STUDENTS OF GIESSEN UNIVERSITY WS 1918/19 - WS 1944/45
FATHER'S PROFESSION : ACADEMICIAN

a) male students

	COUNT	NVI			RW TOTAL
		RW PCT	IVOR	1933	
V ₂₃	1	1	1	1	1
JA	1	576	270	874	19.4
	1	65.9	34.1	19.4	
	1	12.8	21.9	6.6	
NEIN	2	2079	987	3066	68.2
	1	67.8	32.2	68.2	
	1	66.3	72.0	46.2	
	1	46.2	21.9		
NICHT DEFINI	3	423	74	517	12.4
	1	86.7	13.3	12.4	
	1	15.0	5.8		
	1	10.7	1.6		
COLUMN TOTAL		3138	1359	4497	100.0
TOTAL		69.8	33.2	100.0	

RAW CHI SO = 87.62852 WITH 2 D.F., SIG. < .0000
 KENDALL'S TAU B = -.10423, SIG. > .0000
 KENDALL'S TAU C = -.09399, SIG. > .0000

b) female students

	COUNT	NVI			RW TOTAL
		RW PCT	IVOR	1933	
V ₄₂	1	1	1	1	1
JA	1	78	134	212	37.6
	1	36.8	63.2	37.6	
	1	31.1	42.8	13.8	
	1	13.8	23.8		
NEIN	2	131	156	287	50.9
	1	45.6	54.4	50.9	
	1	52.2	49.8	23.2	
	1	23.2	27.7		
NICHT DEFINI	3	42	23	65	11.5
	1	64.6	35.4	11.5	
	1	16.7	7.3		
	1	7.4	4.1		
COLUMN TOTAL		251	313	564	100.0
TOTAL		44.5	55.5	100.0	

RAW CHI SO = 15.90055 WITH 2 D.F., SIG. * .0004
 KENDALL'S TAU B = -.14904, SIG. < .0001
 KENDALL'S TAU C = -.16044, SIG. > .0001

fig. 19

STÜDE: TS GF GIESSEN UNIVERSITY US 1918/19 - US 1944/45
 FATHER'S PROFESSION : SELF- EMPLOYED

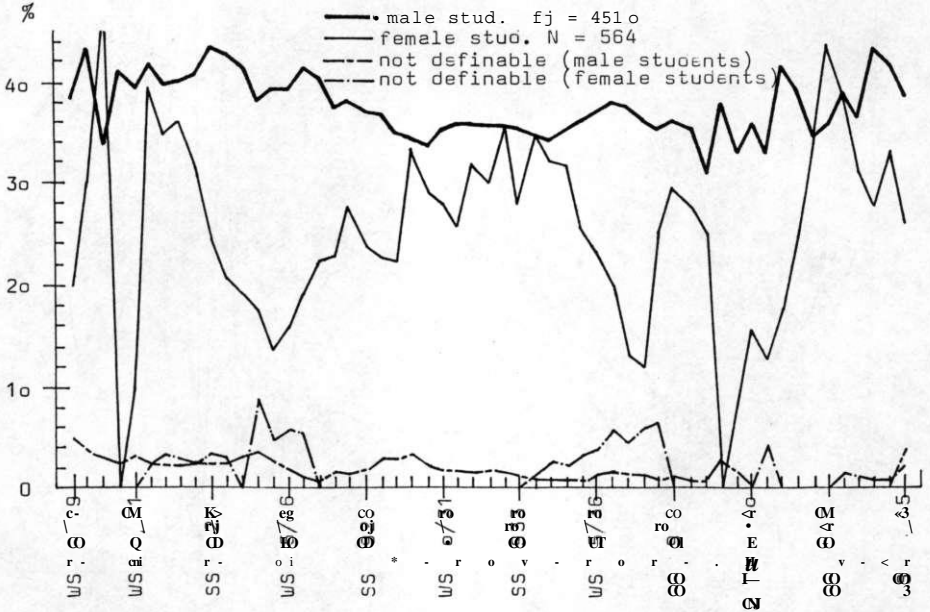


table 19

STUDENTS OF GIESSEN UNIVERSITY US 1918/19 - US 1944/45
 FATHER'S PROFESSION : SELF-EMPLOYED

a) male students

b) female students

	COUNT		1933	AB 1933	ROW TOTAL
	ROW	PCT			
V44	1.	1211	1	460	1677
JA		72.2	1	27.8	37.2
		38.4	1	34.3	
		26.9	1	10.3	
NEIN	2.	1872	1	890	2752
		68.0	1	32.0	61.0
		50.0	1	64.3	
NICHT DEFINI	3.	68	1	12	80
		85.0	1	15.0	1.8
		2.2	1	.9	
	1.5	1	.3		
COLUMN TOTAL	3151	1353		4509	
	69.9	30.1		100.0	

RAW CHI SQ = 17.53170 WITH 2 D.F., SIG. = .0002
 KENDALL'S TAU B = .03010, SIG. = .0206
 KENDALL'S TAU C = .02731, SIG. = .0208

	COUNT		1933	AB 1933	ROW TOTAL
	ROW	PCT			
V44	1.	32	1	98	130
JA		45.6	1	54.4	31.9
		32.8	1	31.2	
		14.5	1	17.4	
NEIN	2.	164	1	212	376
		43.6	1	56.4	66.7
		65.6	1	67.5	
NICHT DEFINI	3.	4	1	4	8
		50.0	1	50.0	1.4
		1.6	1	1.3	
	.7	1	.7		
COLUMN TOTAL	250	314		564	
	44.3	55.7		100.0	

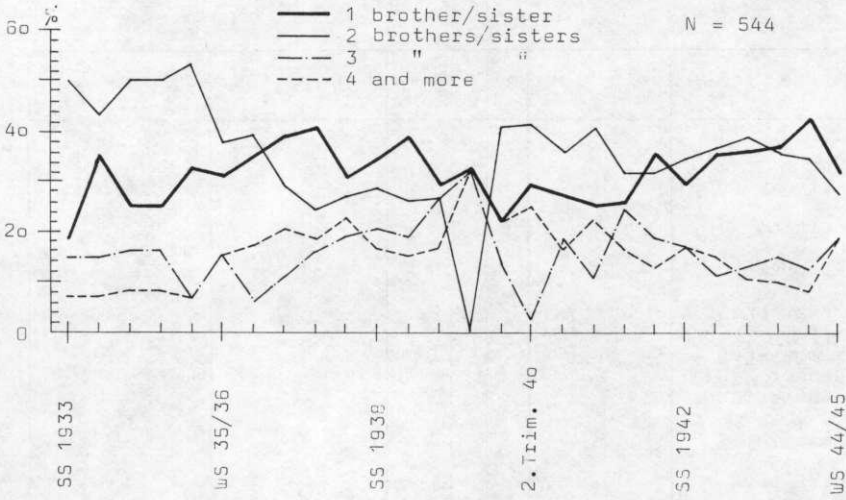
RAW CHI SQ = .29122 WITH 2 D.F., SIG. = .8645
 KENDALL'S TAU B = .01403, SIG. = .3687
 KENDALL'S TAU C = .01323, SIG. = .3687

fig. 2a

STUDENTS OF GIESSEN UNIVERSITY WS 1918/19 - WS 1944/45

NUMBER OF BROTHERS AND SISTERS

a) male students



b) female students

N = 163

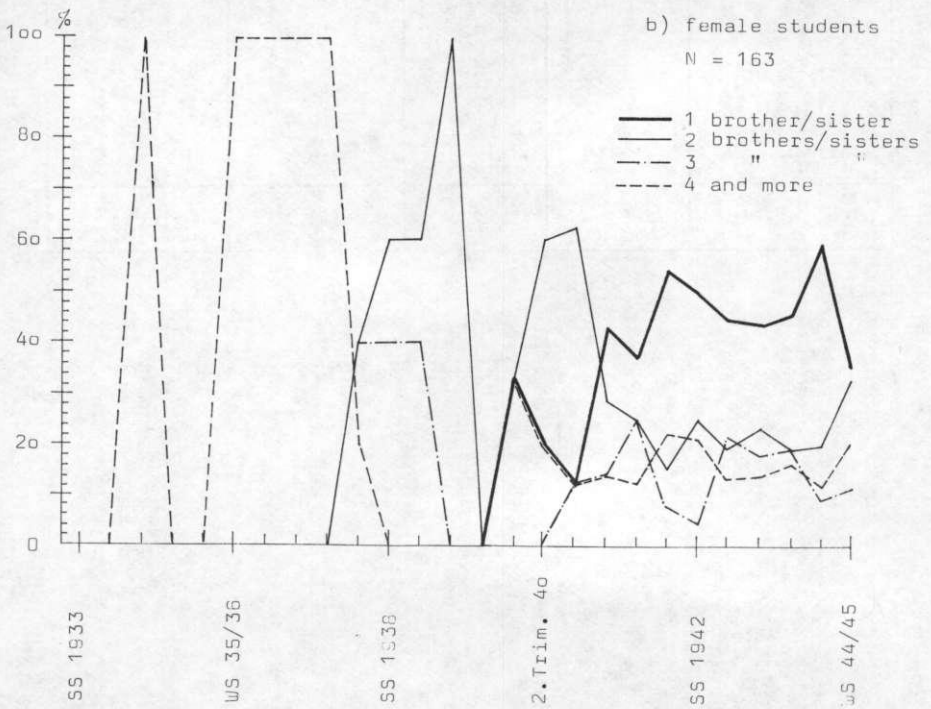


table 21

STUDENTS OF GIESSEN UNIVERSITY W5 1913/19 - Uis 1944/45
 STUDENTS OF JEWISH CONFESSION : SUBJECTS

	male stud.	male stud. (%)	female stud.	female stud. (%)
theology	-	-	-	-
jurisprudence	31	44,9	11,3	25.0
medicine	12	17.4	3	25.0
vet. science	2	2.9	1	8.3
class- philol.	2	2.9	4	33.3
grammar-school teacher	5	7.2	1	8.3
mathematics	> 3	4.3	-	-
biology	3	4.3	-	-
chemistry	1	1.4	-	-
forestry	-	-	-	-
agriculture	2	2.9	-	-
political sc.	8	<u>11.6</u>	-	-
pharmacy	-	-	-	-
total	69	100.0	12	100.0

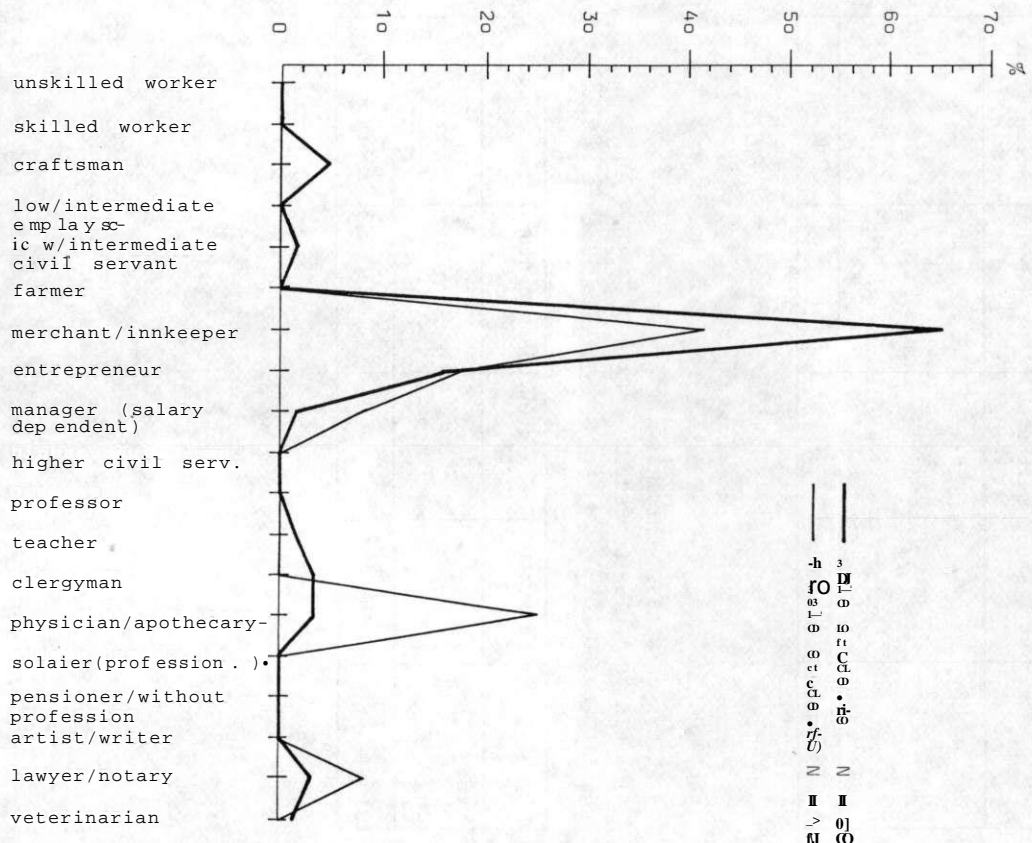


table 23

STUDENTS OF GIESSEN UNIVERSITY US 1918/19 - US 1944/45
STUDENTS OF JEWISH CONFESSION : FATHER'S PROFESSION
ACADEMICIAN

	male stud.	male stud. (%)	female stud.	female stud. (%)
Yes	6	8.9	4	33.3
No	53	79.1	6	50.0
Not defin- able	8	11.9	2	16.7
total	67	100.0	12	100.0

table 24

STUDENTS OF GIESSEN UNIVERSITY US 1918/19 - US 1944/45
STUDENTS OF JEWISH CONFESSION : FATHER'S PROFESSION
SELF-EMPLOYED

	male stud.	male stud. (%)	female stud.	female stud. (*)
Yes	63	91.3	11	91.7
No	6	8.7	1	8.3
total	69	100.0	12	100.0

fig. 25 (pursuit)

STUDENTS OF GIESSEN UNIVERSITY US 1918/19 - US 1944/45
MEMBER'S OF POLITICAL STUDENT ORGANISATIONS BEFORE 1933
FATHER'S PROFESSION

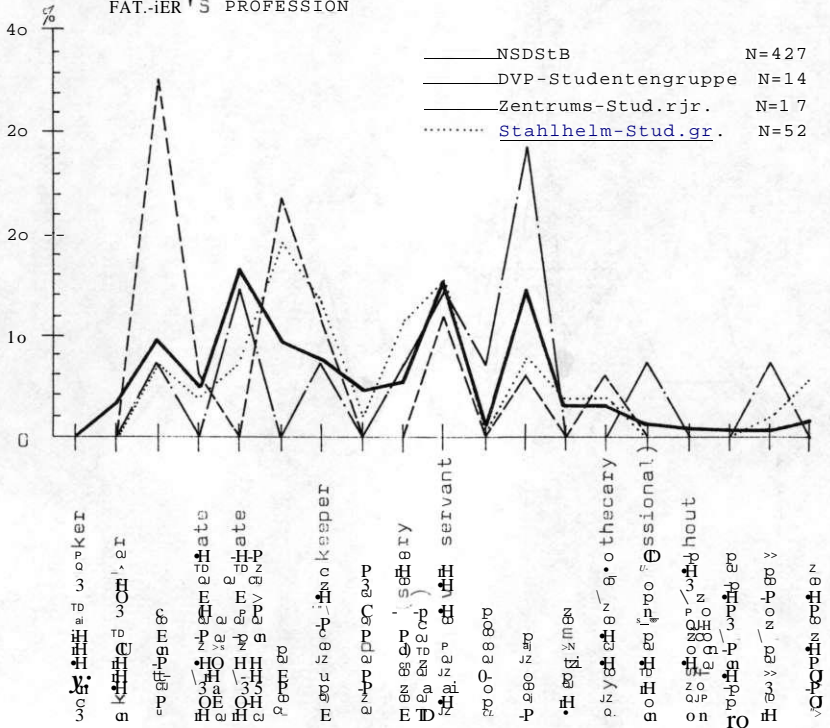
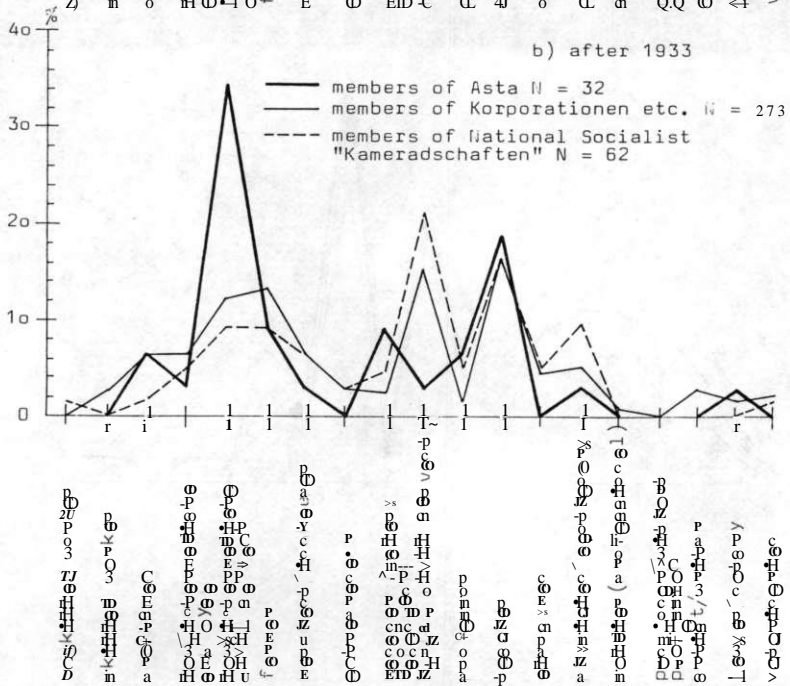
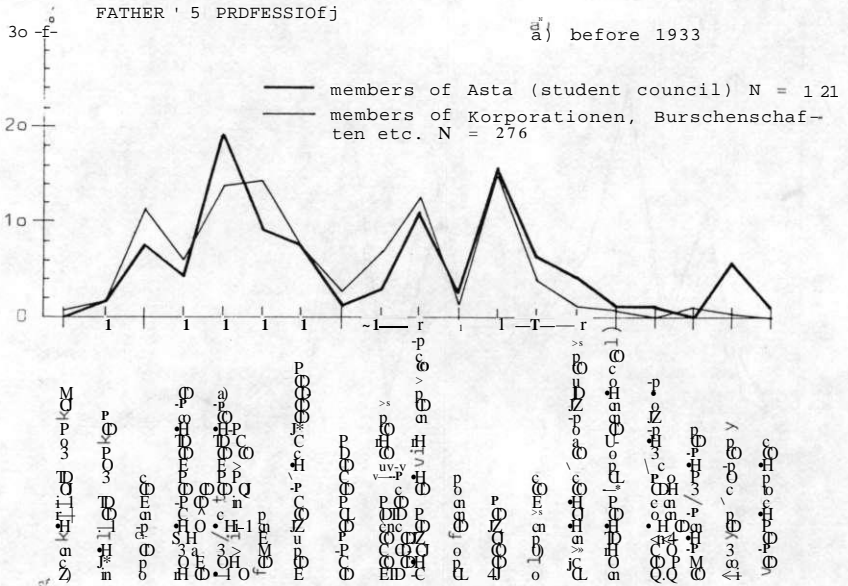


Fig. 2a

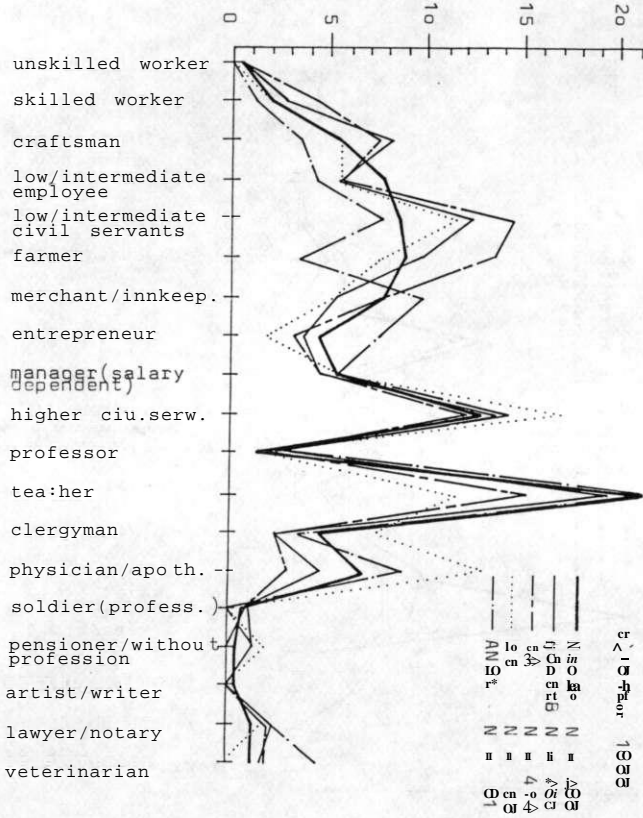
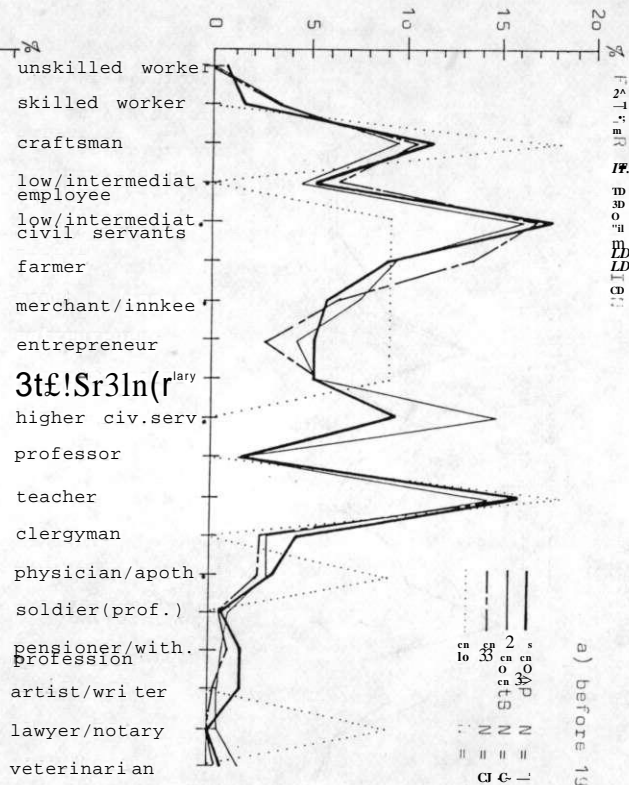
STUDENTS OF GIESSEN UNIVERSITY 1918/19 - 1944/45
MEMBERS OF ASTA, CORPORATIONS AND "KAMERADSCHAFTEN"
FATHER'S PROFESSION



Исторический тип населения в СССР в 1933 году

Исторический тип населения в СССР в 1933 году

a) before 1933



STUDENTS OF GIESSEN UNIVERSITY WS 1910/19 - WS 1944/45
MEMBERS OF POLITICAL STUDENT ORGANISATIONS BEFORE 1933

fig. 28 FATHER'S PROFESSION : ACADEMICIAN

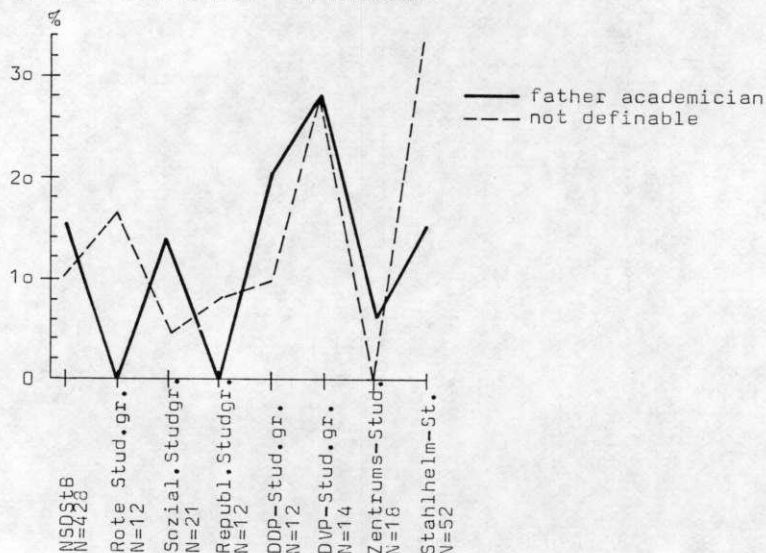
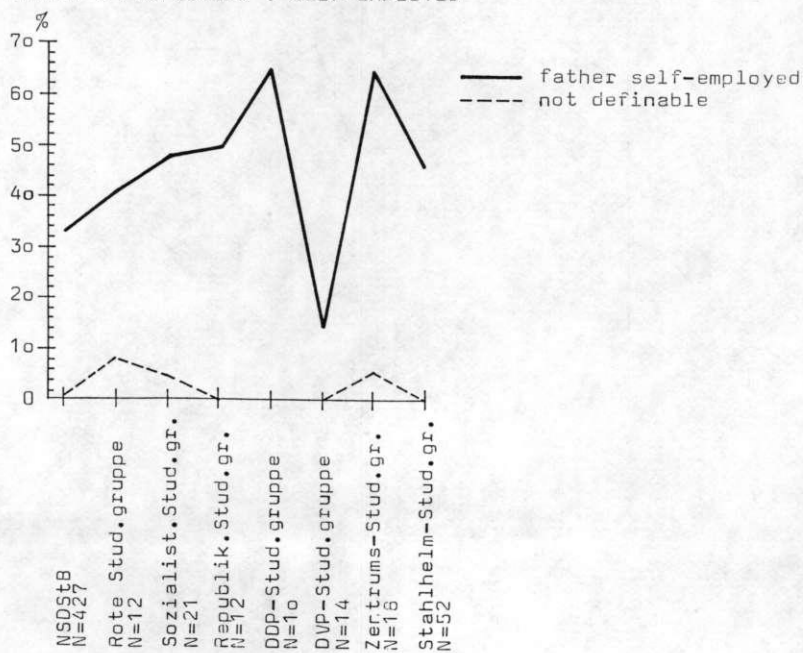


fig. 29 FATHER'S PROFESSION : SELF-EMPLOYED



STUDENTS OF GIESSEN UNIVERSITY 1918/19 - WS 1944/45
 NEHEBES [JF .\ST.-I, CO, cPORATIO . SAN u I : S-'KANIER ADSCHAFTE: '*

fig. 30

a) FATHER'S PROFESSION : ACADEMICIAN
 before 1933 after 1933

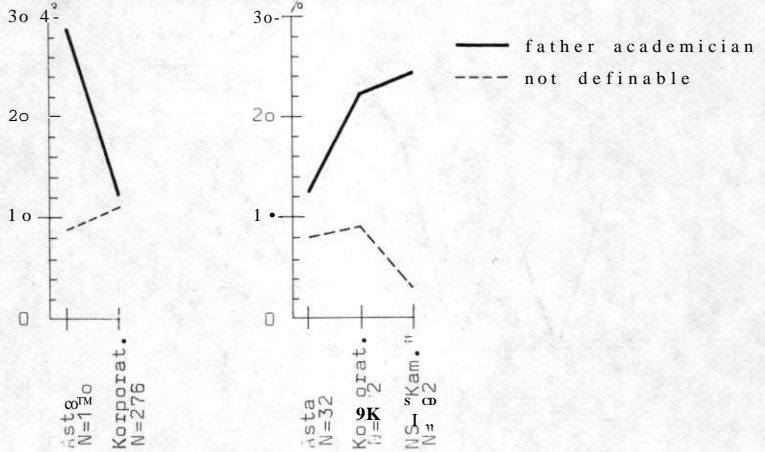
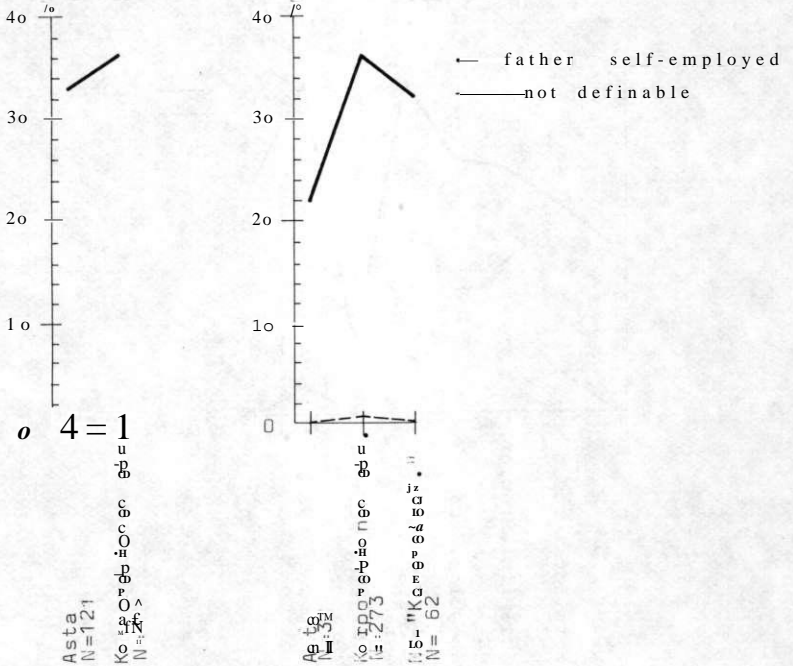


fig. 31

b) FATHER'S PROFESSION : SELF-EMPLOYED
 c.- before 1933 after 1933



STUDENTS OF GIESSEN UNIVERSITY IN 1918/19 - WS 1944/45
 [MEMBERS OF FASCIST ORGANISATIONS

fig. 32

a) FATHER'S PROFESSION : ACADEMICIAN

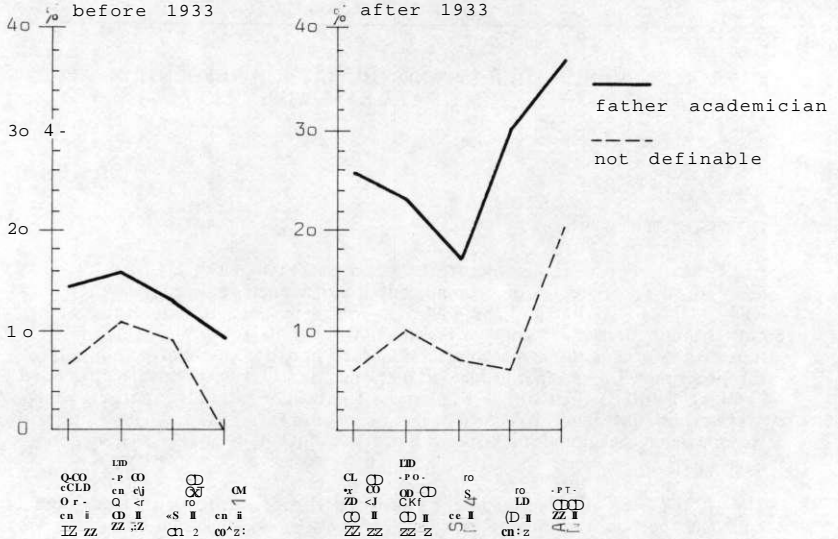


fig. 33

b) FATHER'S PROFESSION : SELF-EMPLOYED

